

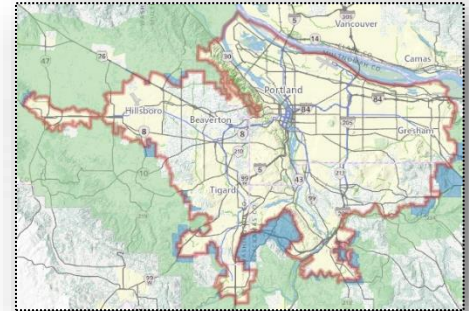
NOFA 2024-HOD LIFT/HDIP

Is Your Development Rural?

Step 1 | Determine if you are in the Portland Urban Growth Boundary

If you are not sure whether or not your jurisdiction falls within the Urban Growth Boundary, you can access Metro's lookup tool [here](#).

If the city or other jurisdiction in which you are developing falls inside the red boundary, you are within the urban growth boundary.



If your development is within this boundary, it does not qualify as rural. Stop here.

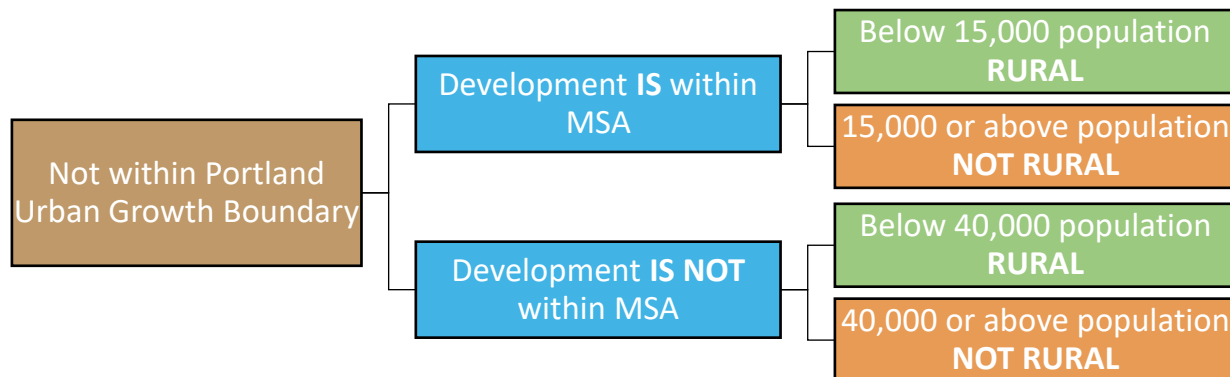
Step 2 | Determine if you are in an MSA

Oregon has 8 Metropolitan Statistical Areas (MSA) that consist of the following counties. Use this list to determine if your development is within an MSA.

Benton County	Jackson County	Linn County	Polk County
Clackamas County	Josephine County	Marion County	Washington County
Columbia County	Lane County	Multnomah County	Yamhill County
Deschutes County			

Step 3 | Determine the population of your jurisdiction

Use the Oregon Blue Book's 2022 population estimates available [here](#) to determine the population of the jurisdiction where your development is located, then use the guidance below to determine if you meet rural eligibility.



Note: Unincorporated areas that fall within an urban growth boundary should be considered the jurisdiction of that boundary for purposes of this determination. Please reach out to HO.Development@hcs.oregon.gov if you have any questions.