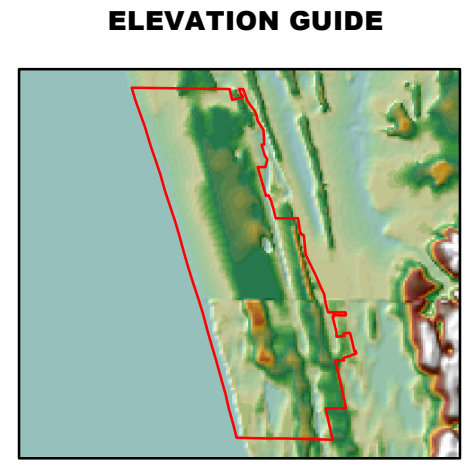
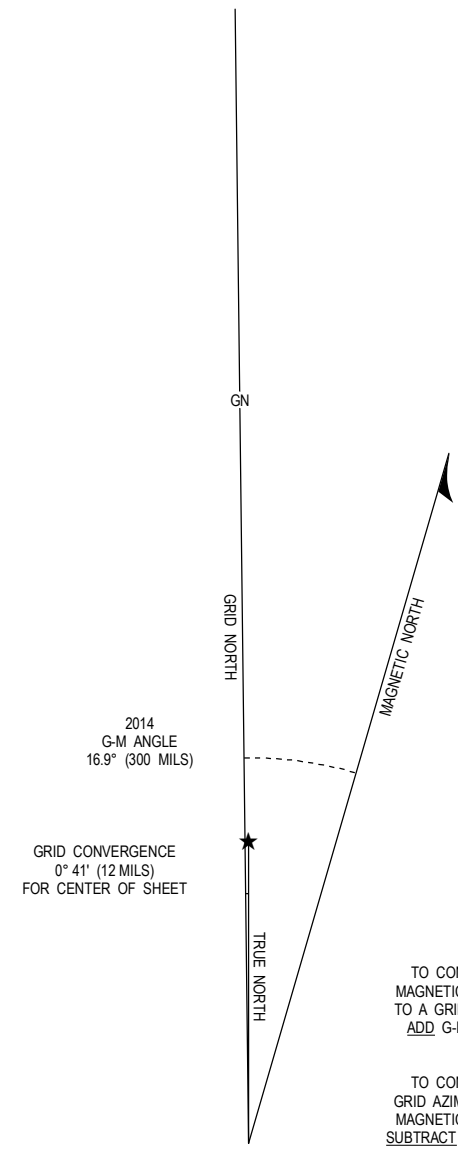


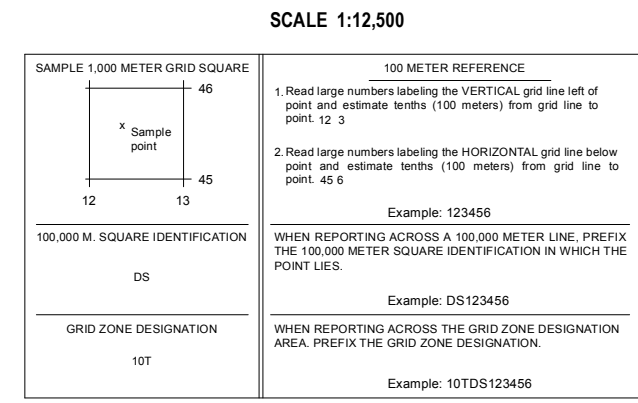
Rilea Armed Forces Training Center, Interim Special Warrenton, OR



- MILITARY LEGEND**
MILITARY OVERPRINT INFORMATION AS OF 10 - 10
- CANTONMENT
 - LANDING ZONE
 - IMPACT AREA
 - RANGE
 - TRAINING AREA
 - SUB-TRAINING AREA
 - AMMUNITION HOLDING AREA
 - OBSERVATION POINT
 - SURFACE DANGER ZONE - ALL RANGES



- LEGEND**
- POPULATED PLACES**
- Densely built-up areas
 - Sparsely to moderately built-up areas
- ROADS**
- Interstate
 - Primary Road
 - Secondary Road
 - Tertiary Road
 - Unimproved Road
 - Route marker: Interstate, Federal, State
 - Normal Gauge 1.44 m
- RAILROADS**
- Single Track
 - Multiple Track
- BOUNDARIES**
- State
 - County
 - Installation boundary
- MISCELLANEOUS CULTURAL FEATURES**
- Building; School
 - Church; Synagogue; Mosque
 - Cemetery
 - Wildlife Access Point
 - Beach Pole
 - Hospital; Helipoint
 - Radio Tower
 - Bridge; Footbridge; Culvert
 - Tunnel: Road; Railroad
 - Horizontal control point
 - Gate Point
 - Fence/line
 - Fort to Sea Recreation Trail
 - Rapid Infiltration Basin
 - Water Storage Tank
- OBSTRUCTIONS**
- High voltage transmission line
 - Low voltage utility line
- DRAINAGE**
- Streams: Perennial, Intermittent, Dry
 - Spring: Perennial, Intermittent
 - Well
 - Lakes: Perennial, Intermittent, Dry
 - Wetland: Land subject to natural inundation
 - Sandbar/Beach
- VEGETATION**
- Vineyard; Orchard
 - Scrub; Open woodland
 - Forest; Mangrove
- MISCELLANEOUS RELIEF**
- Spot Elevation Point
 - Bench mark, monumented
 - Index Contour
 - Non-index Contour
 - Supplemental contour
 - Depression
- MISCELLANEOUS**
- 10,000 Meter UTM grid
 - 1000 Meter UTM grid
 - 2.5 Minute Lat/Long Point



ELEVATIONS IN METERS

CONTOUR INTERVAL 5 METERS (INSIDE INSTALLATION)

CONTOUR INTERVAL 10 METERS (OUTSIDE INSTALLATION)

SPHEROID: WORLD GEODETIC SYSTEM 1984

GRID: 1000 METER UTM ZONE 10

PROJECTION: UNIVERSAL TRANSVERSE MERCATOR

CENTRAL MERIDIAN: 123° W LONGITUDE

LATITUDE OF ORIGIN: 47° LATITUDE

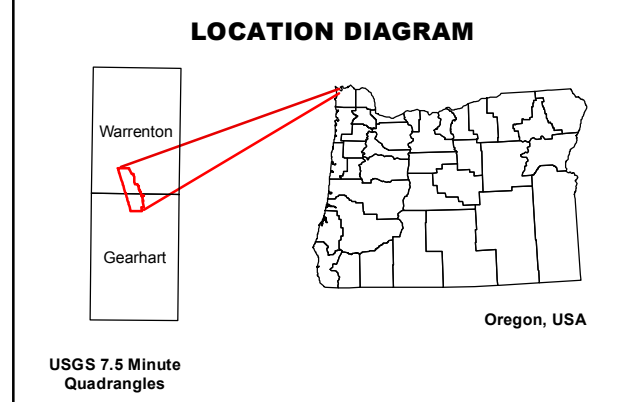
VERTICAL DATUM: NORTH AMERICAN VERTICAL OF 1988

HORIZONTAL DATUM: WORLD GEODETIC SYSTEM 1984

CONTROL BY: USGS NATIONAL GEODETIC SURVEY POINTS

PREPARED BY: SRP GIS WESTERN REGIONAL SUPPORT CENTER

PUBLISHED BY: UNPUBLISHED



- RANGES**
- LIVE FIRE RANGES**
- A LAW/AT-4 Range
 - B M203 Grenade Range
 - C MG Transition Range
 - D Modified Record Fire Range
 - E Zero III Range
 - F Match Pistol Range
 - G Zero II Range
 - H Known Distance Range
 - I Zero I Range
 - J Explosives Range
 - K Pistol Range
 - L Grenade Range
 - M Claymore Range
 - N Live Fire Shoothouse
- RANGES**
- O Hand Grenade Qualification Course
 - P Grenade Accuracy Course
 - Q Urban Operations (UO) Site
- SUB-TRAINING AREAS**
- R Simulated Collapsed Vertical Structure
 - S Bridge Site 1
 - T Pole Orchard Training Area
 - U Parade Field
 - V Helo Pad 150R
 - W Bridge Site 2
 - X Air Assault Rappel Training Area
 - Y Air Assault Obstacle Course
 - Z ACRT Obstacle Course
- Post Headquarters: (503) 836-4004
Range Control Contact: (503) 836-4012

This map is based on the Camp Rilea Special and was edited on October 1, 2014, by the Oregon Military Department.

Not all data layers represented maintain the same accuracy level, therefore the map scale applied does not necessarily equate to the implied horizontal and vertical positional accuracy.