

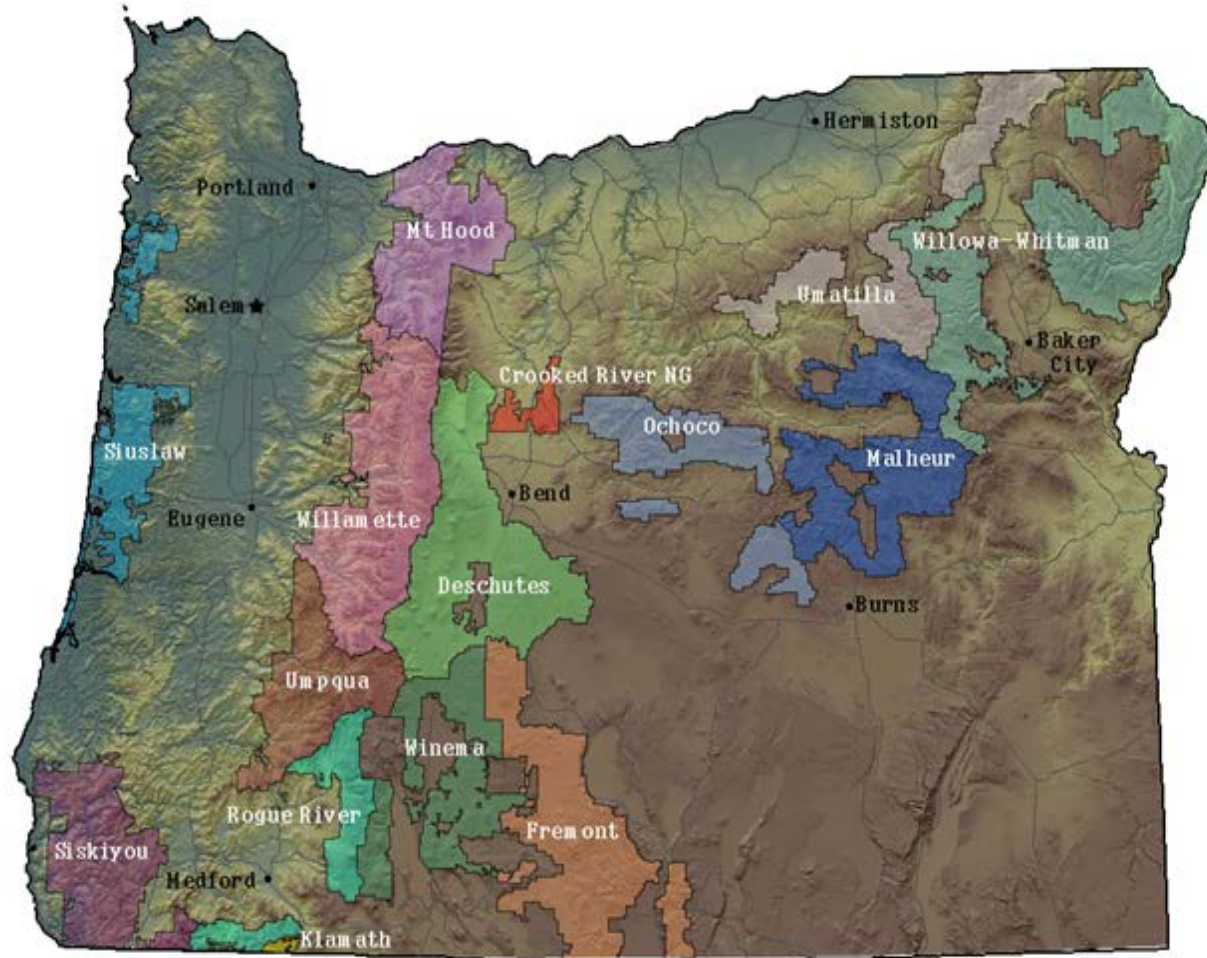


US Forest Service Pacific Northwest Region

“To sustain the health, diversity, and productivity of the nation’s forests and grasslands to meet the needs of present and future generations.”



Oregon: 11 Forests; 1 Grassland; 1 Monument; and 1 Scenic Area



15 Million Acres of Public Land including:

- 15,000 Miles of Trail
- 1,500+ Developed Recreation Sites
- 45 Wild and Scenic Rivers totaling 1,188 River Miles
- 40 Wilderness Areas totaling 2.4 Million Acres
- 11 Ski Resorts
- 1,600+ Recreation Residences
- 30 Organization Camps
- 35 Resorts and Marinas
- 536 Permitted Outfitters and Guides
- 188 Recreation Events



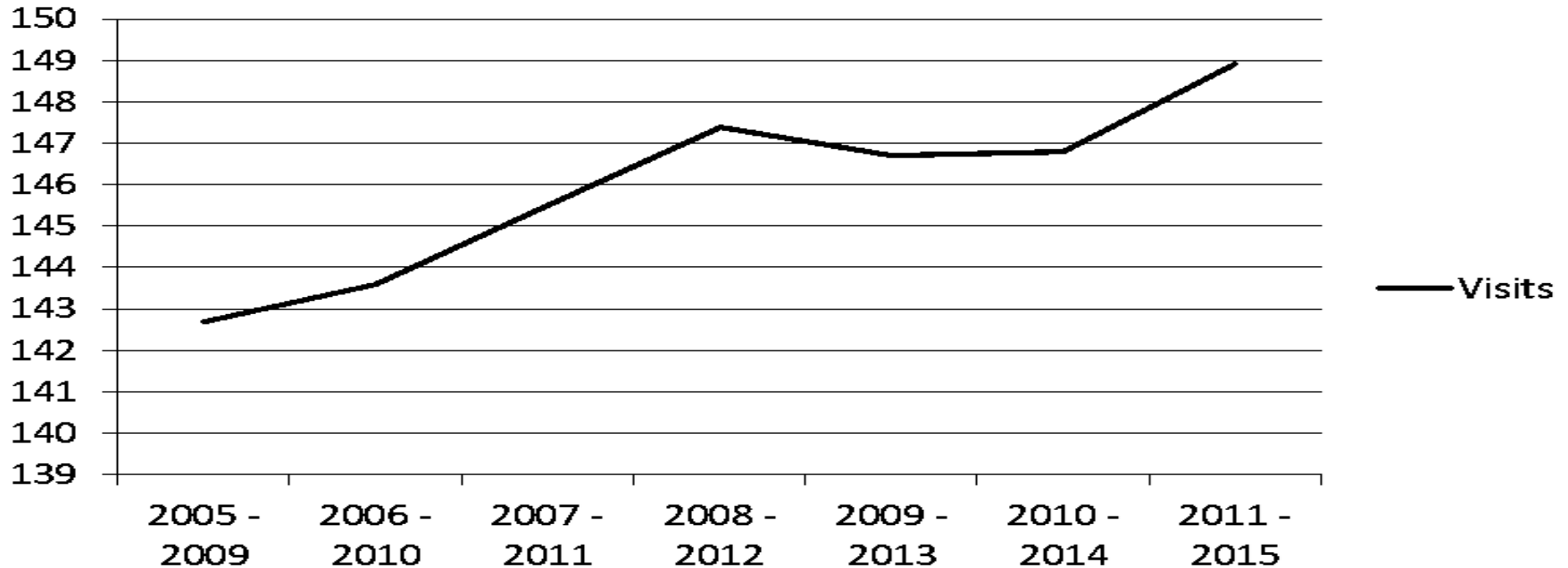
Oregon Community Benefits from National Forest Recreation

- **9 million annual visits** to national forests in Oregon
- **3,950 year-long jobs supported**, many in rural communities
- **\$129 million in labor income** for employees and businesses supported
- **\$448 million spent in communities** surrounding national forests
- **\$11.5 million in recreation fees** generated to enhance recreation sites



National Trend

Visits (millions) to national forests



National Forest Visits in Oregon and Washington

- 53% of visits come from those living within 60 miles
- 3% of visits are from international visitors
- 62% of visitors are males
- 95% of visitors are white
- Median visit duration is 4 hours
- Campers spend about 2.5 nights/visit
- Each visit involves recreating at 1.2 sites/areas



Recreation Visits to National Forests in Oregon

- 53% Hiking/walking
- 51% Viewing natural features
- 36% Relaxing/hanging out/staying cool
- 29% Viewing wildlife
- 21% Driving on roads for pleasure
- 19% Downhill skiing/snowboarding

Source: <https://apps.fs.fed.us/nfs/nrm/nvum/results/>

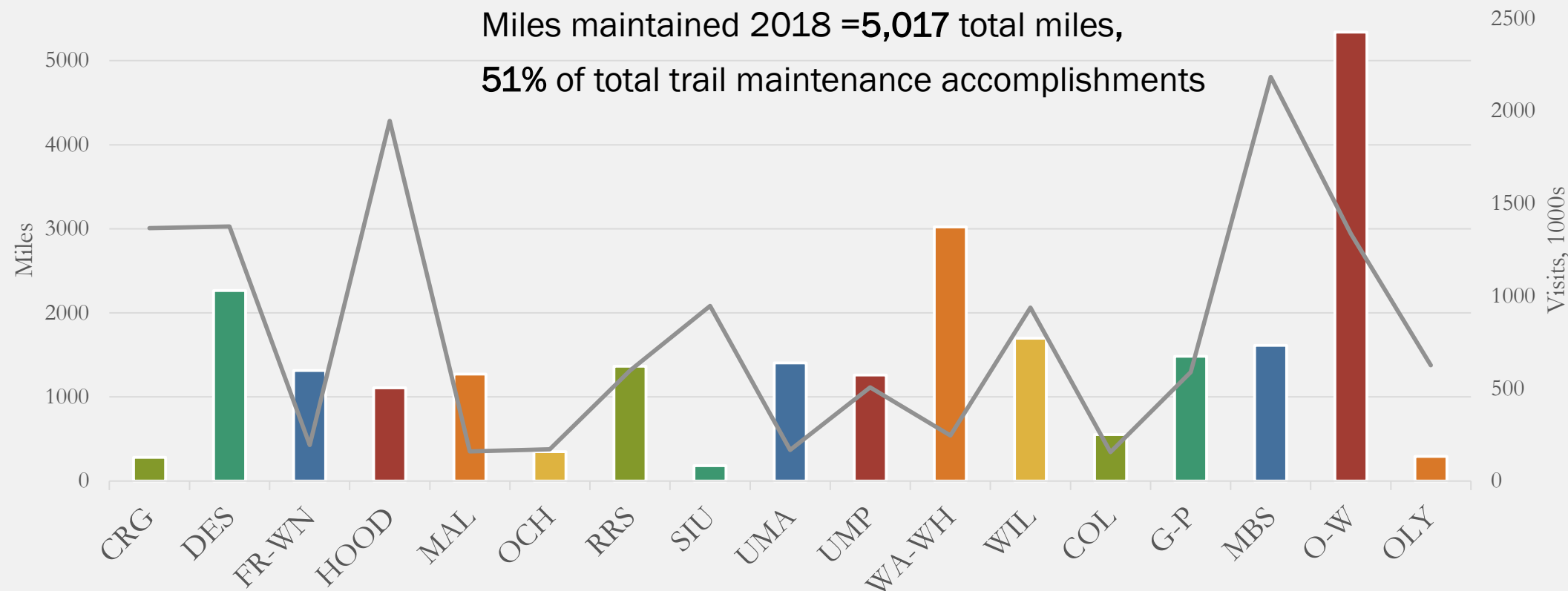


Region 6: Trail Miles and Visitation by Forest

Trail Based Volunteer and Partner Contributions

Miles maintained 2018 =5,017 total miles,

51% of total trail maintenance accomplishments



93% of Federally Managed Trails in Region

Shared Stewardship, Towards a Sustainable Future....

We are shifting from simply maintaining what we have to investing in what is important for the future:

- Engaging with our communities, sharing decision space
- Working across boundaries with our sister agencies, considering the totality of the recreation and tourism experience
- Restoring settings and ecological conditions
- Improving our business practices and modernizing our special uses program
- Expanding our focus on and work towards broader diversity, equity, and inclusion



Youth Engagement

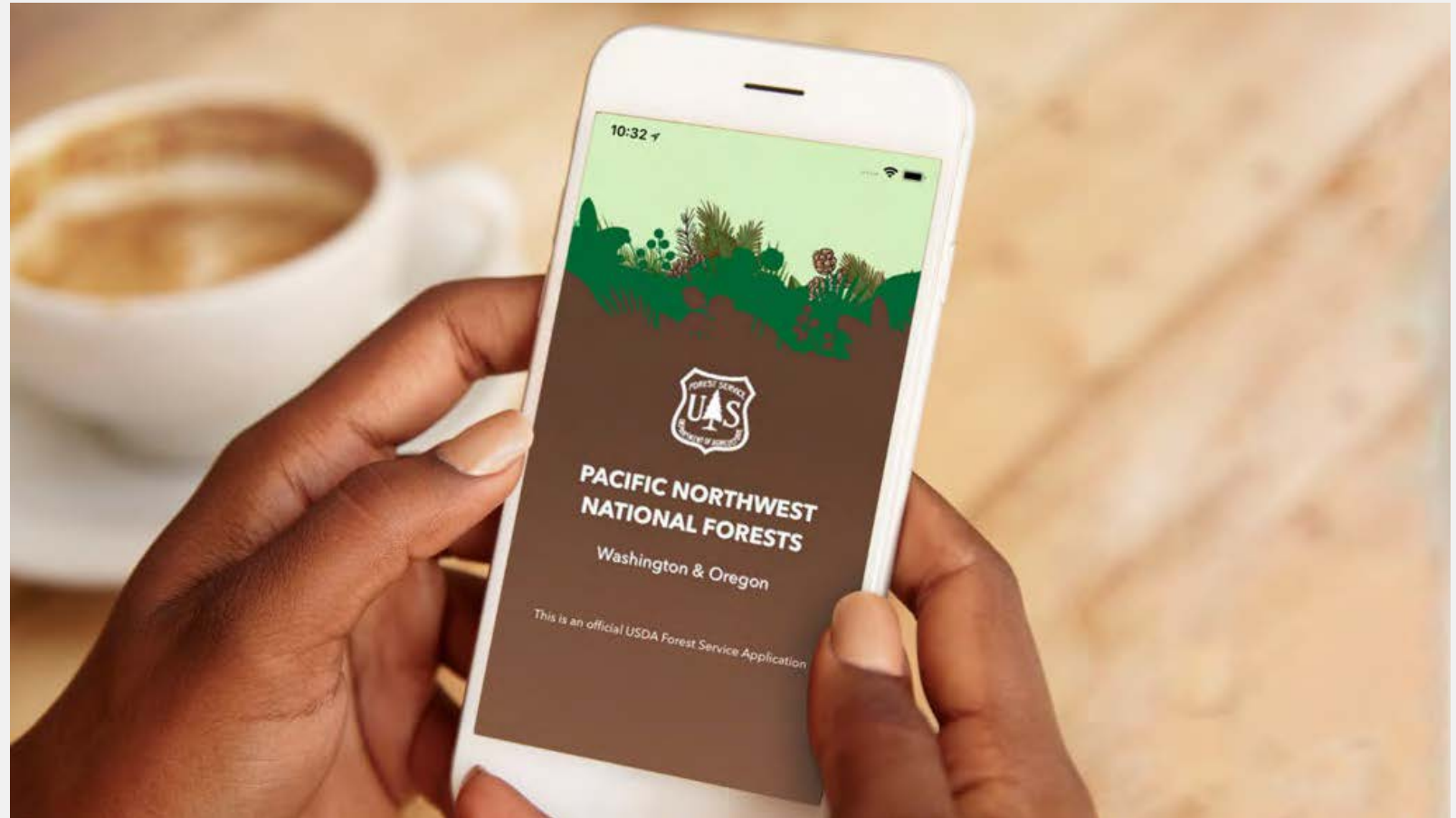
- 714 conservation education events
- 900,000 people reached
- 27,972 fourth graders reached at 92 Every Kid events



Connecting through Digital Information and Social Media

THERE'S AN APP FOR THAT

The Pacific Northwest National Forests recreation mobile app launched in both Android and iOS versions. To date, there have been more than 18,000 iOS downloads and 8,000 Android downloads. The app helps users find useful information about trails, roads, local weather, fire information, and more.



Accessible Adventures - video



https://www.youtube.com/results?search_query=accessible+adventures+in+the+pacific+northwest



Thanks and Questions

Tracy Tophooven
Regional Director
Tracy.Tophooven@usda.gov
503-808-2966

Mt Jefferson Wilderness, Oregon

