

Community Wildfire Protection Plans In Oregon

Oregon Office of the State Fire Marshal
Oregon Department of Forestry





Healthy Forests Restoration Act (2003)

- Reduce wildfire risk to communities, federal land, and water sources
- Authorized grant programs to improve commercial value of forest biomass
- Enhance protection efforts watersheds and other forest and rangeland health
- Improve detection of forest health infestations
- Restoration of forest ecosystems

Why-What's the purpose?

Identifies and prioritizes areas for fuel reduction activities on both federal and non-federal ownerships



Opens doors for grant funding opportunities

Western State
Fire Manager
(CWSF)

Community
Assistance

Community
Wildfire
Defense Grants

Federal agencies
consider community
priorities in fuel reduction

Can address response,
mitigation,
preparedness, structure
protection...

Provides opportunity to
engage around shared
concerns

- Climate Change
- Smoke Management
- Underserved Populations

What's included in a CWPPP?

A thick orange horizontal bar spans the width of the slide, with a vertical orange bar extending downwards from its right end.

- Decided by the community
- Wildfire Response
- Hazard Mitigation
- Community Preparedness
- Structure/Infrastructure Protection

Collaboration

- Required participation: ODF, local government, local fire department(s)
- Everyone can and **SHOULD** provide input



CWPP Tools and Resources

Tools and Templates

- [Oregon Explorer](#)
- CWPP Guides
 - [A Framework for Community Fire Plans](#)
 - [Preparing a Community Wildfire Protection Plan](#)
- *ESRI CWPP Hub*
 - [CWPP Hub](#)
 - [Example](#)-Napa County
 - [Story Map Example](#)
 - [Dashboards](#)
- [Land Tender](#)



CWPP Tools and Resources



Plan Developers

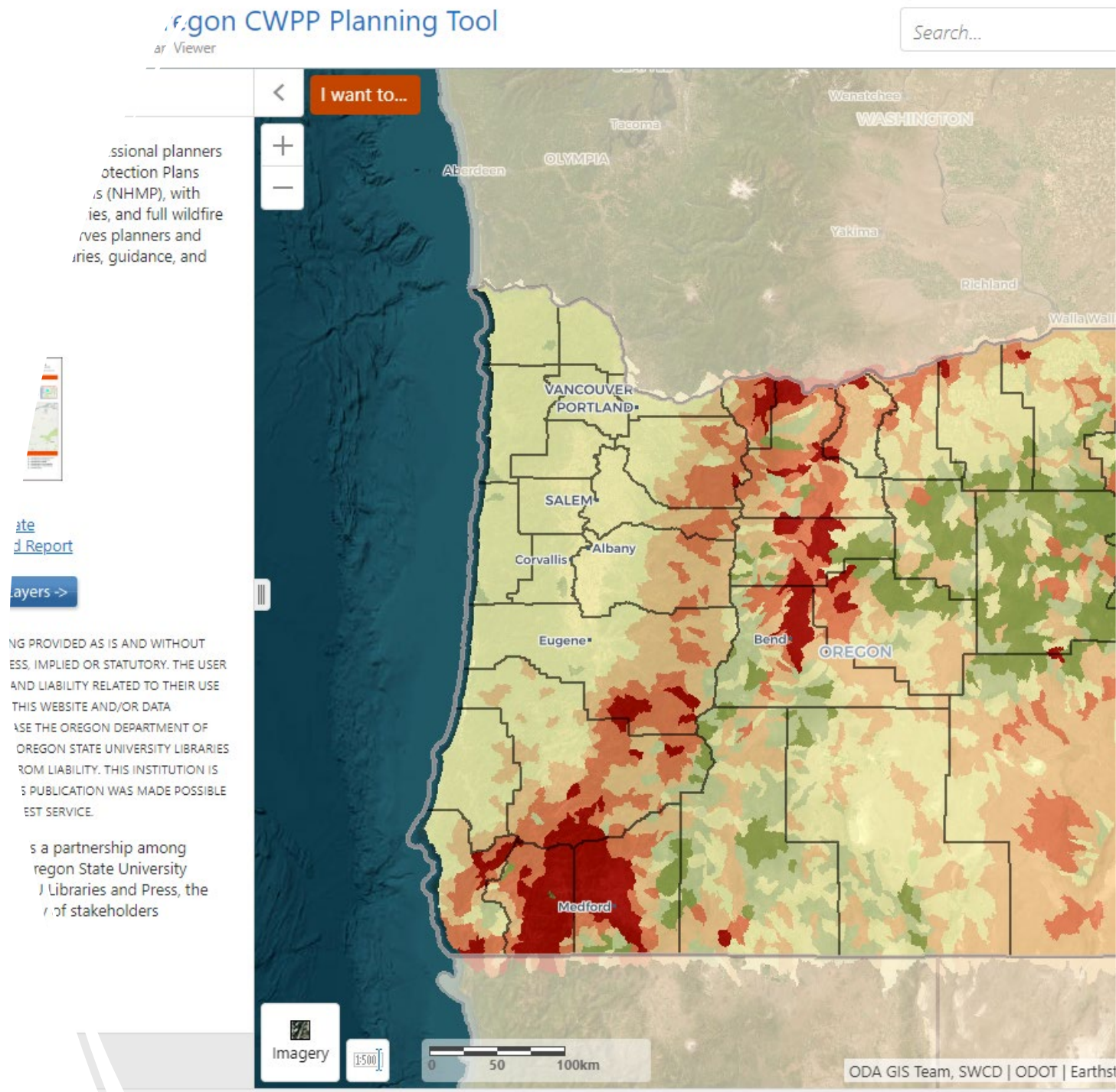
- University of Oregon
 - [Institute for Policy Research and Engagement](#)
- Portland State University
- Partners
- Local Contractors

Oregon Explorer


CWPP Planning Tool

- https://tools.oregonexplorer.info/oe_htmlviewer/index.html?viewer=wildfireplanning

Advanced Reports



- Advanced Reports



Oregon Wildfire Risk Explorer- Advanced Report

Douglas County
3,285,465 Acres (5,134 Sq. Miles)


Generated: May 14, 2023

Weather and vegetation conditions vary daily and seasonally. For current conditions and local fire restrictions, contact your local fire district or visit: www.KeepOregonGreen.org/current-conditions


INTRODUCTION

This report summarizes wildfire risk in **Douglas County** from the [Advanced Oregon Wildfire Risk Explorer map viewer](#) (OWRE). Wildfire risk combines the likelihood of a fire occurring with the exposure and susceptibility of valued resources and assets on the landscape.

Nearly all areas in Oregon experience some level of wildfire risk. Conditions vary widely with local topography, fuels, and local weather, especially local winds. In all areas, under warm, dry, windy, and drought conditions, expect higher likelihood of fire starts, higher fire intensities, more ember activity, a wildfire more difficult to control, and more severe impacts.



Douglas County Reference Map

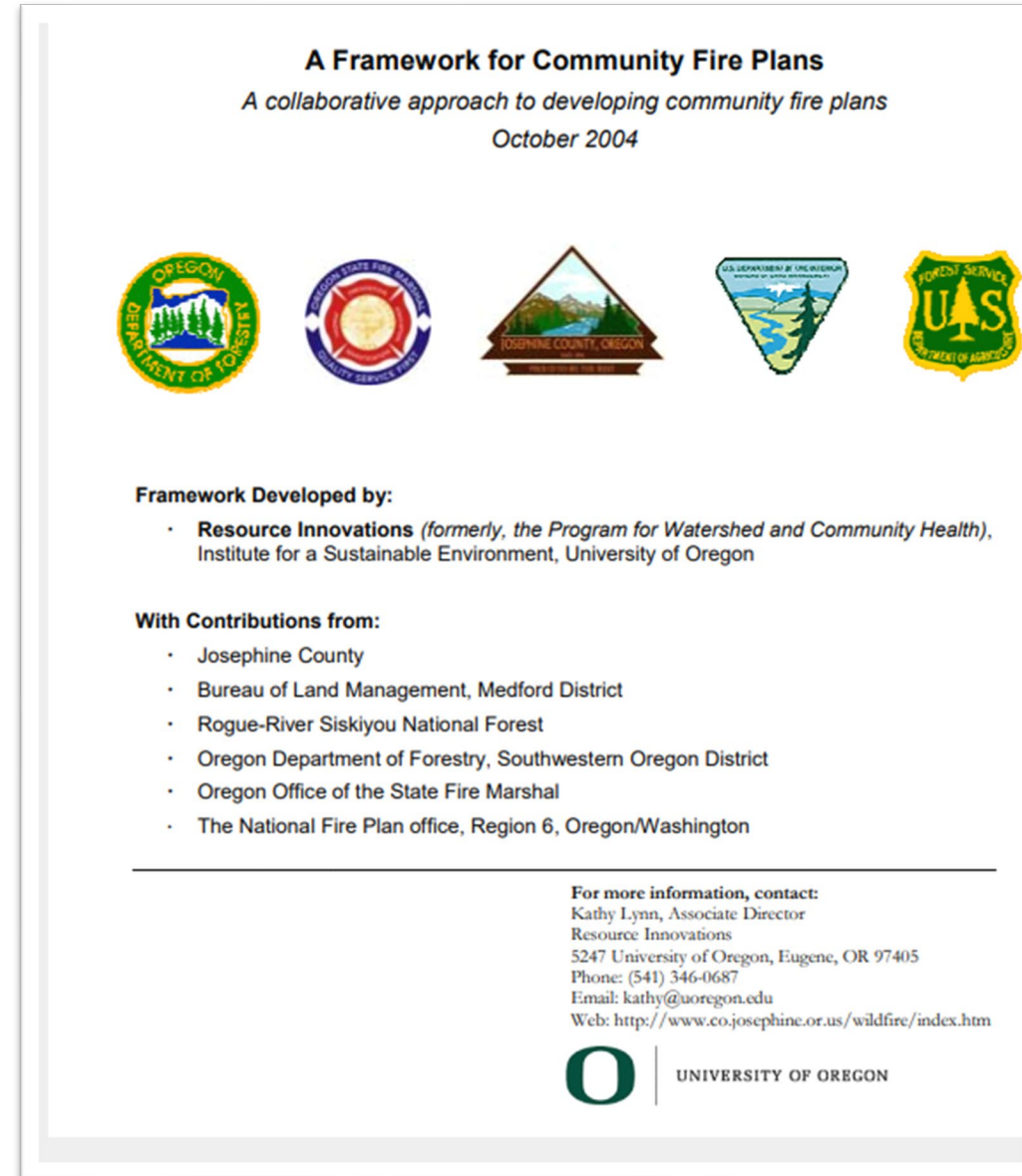


REPORT CONTENTS

2 Guidelines	13 Burn Probability	26 Probability of >8ft Flames
3 Concepts	15 Fire Intensity - Flame Lengths	27 Potential Impact to People and Property
4 Land Ownership & Management	17 Overall Impact	28 Potential Impact to Infrastructure
5 Communities	19 Hazard to Potential Structures	29 Potential Impact to Wildlife
6 Fire History - Fire Ignitions	21 Existing Vegetation Type	30 Potential Impact to Forest Vegetation
7 Fire History - Fire Perimeters	23 Risk To Assets	33 Potential Impact to Timber Resources
10 Housing Density - Where People Live	24 Risk To People and Property	34 Fuel Model Groups
11 Overall Wildfire Risk	25 Probability of >4ft Flames	

1

A Framework for Community Fire Plans



<https://www.oregon.gov/odf/Documents/fire/CFPFramework.pdf>

<https://www.oregon.gov/odf/Documents/fire/cwppphandbook.pdf>

The *minimum requirements* for a CWPP as described in the HFRA are:

- (1) **Collaboration:** A CWPP must be collaboratively developed by local and state government representatives, in consultation with federal agencies and other interested parties.
- (2) **Prioritized Fuel Reduction:** A CWPP must identify and prioritize areas for hazardous fuel reduction treatments and recommend the types and methods of treatment that will protect one or more at-risk communities and essential infrastructure.
- (3) **Treatment of Structural Ignitability:** A CWPP must recommend measures that homeowners and communities can take to reduce the ignitability of structures throughout the area addressed by the plan.



Preparing a Community Wildfire Protection Plan

A Handbook for Wildland–Urban Interface Communities

Sponsored By:

Communities Committee • National Association of Counties • National Association of State Foresters
Society of American Foresters • Western Governors' Association

Communities
Committee

NACO
National Association of Counties
Counties Care for America



Society of American Foresters



March 2004



Napa County CWPP Projects (2020 and 2022)



GIS Admin
Napa Communities Firewise Foundation

Summary

A dashboard summarizing projects identified in the CWPP in both 2020 and 2022 by project type and proponent.

[View Full Details](#)

Details



Dashboard
Dashboard



October 31, 2022
Date Updated



October 31, 2022
Published Date



Public
Anyone can see this content



No License Provided
Request permission to use

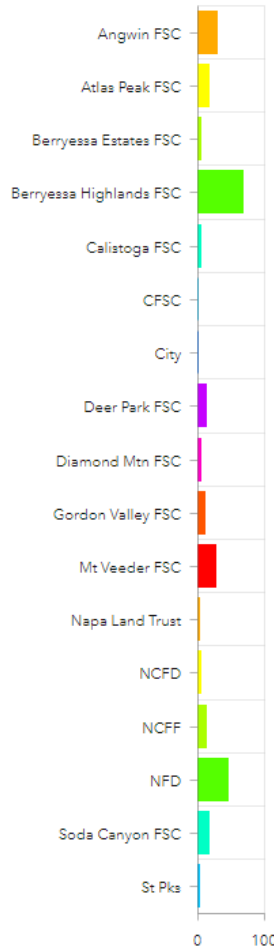


Napa County CWPP Pr... Projects summarized by pr...

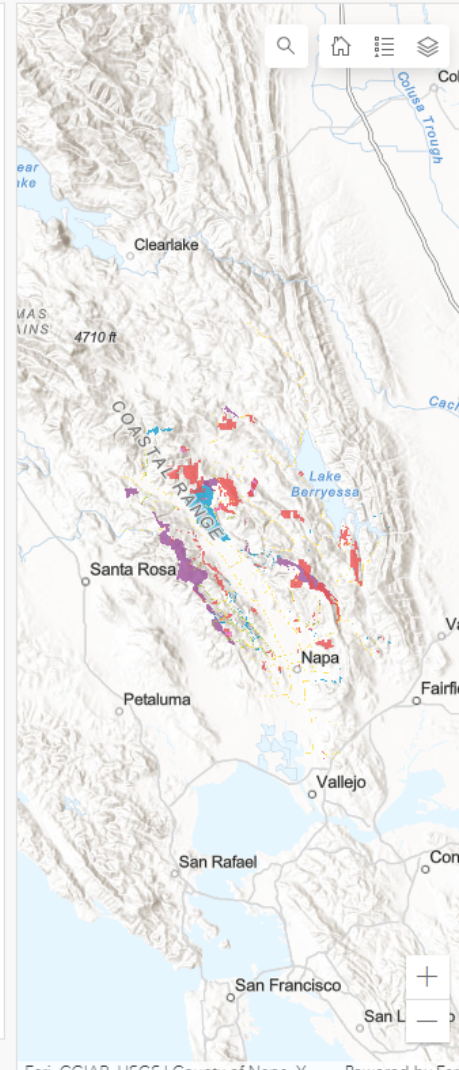
2020: Sele...
No project...

2022: Sele...
No project...

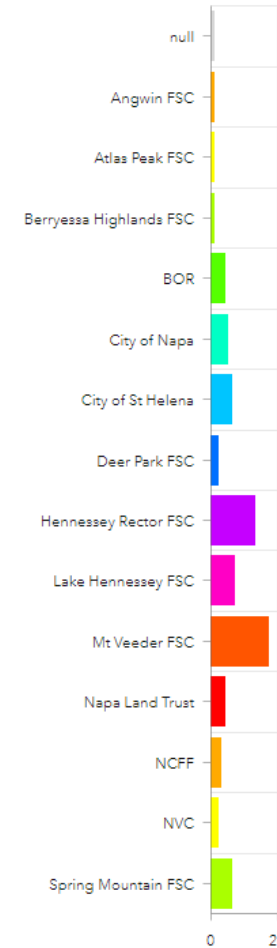
2020 Projects by Proponent



2020 by Proponent



2022 Projects by Proponent

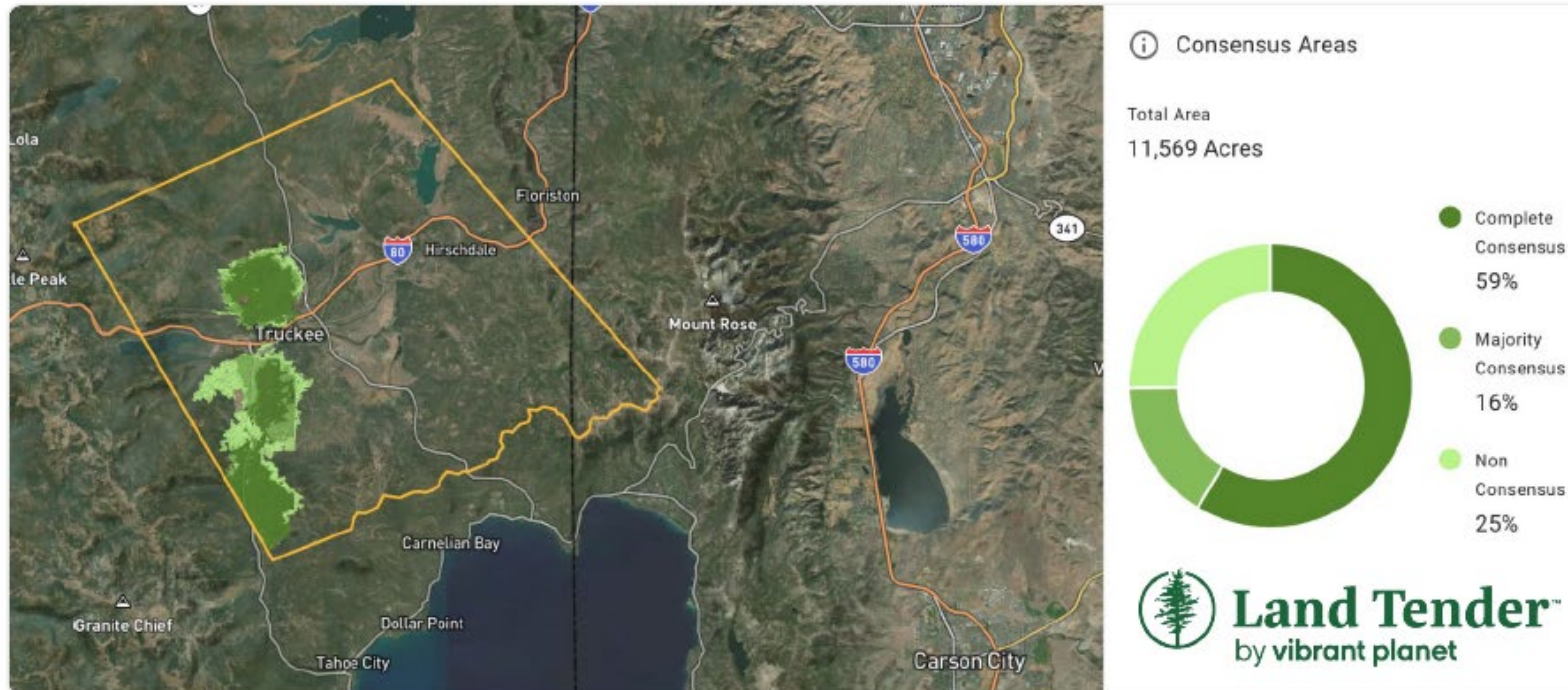


2022 by Proponent

Real-time collaborative scenario planning

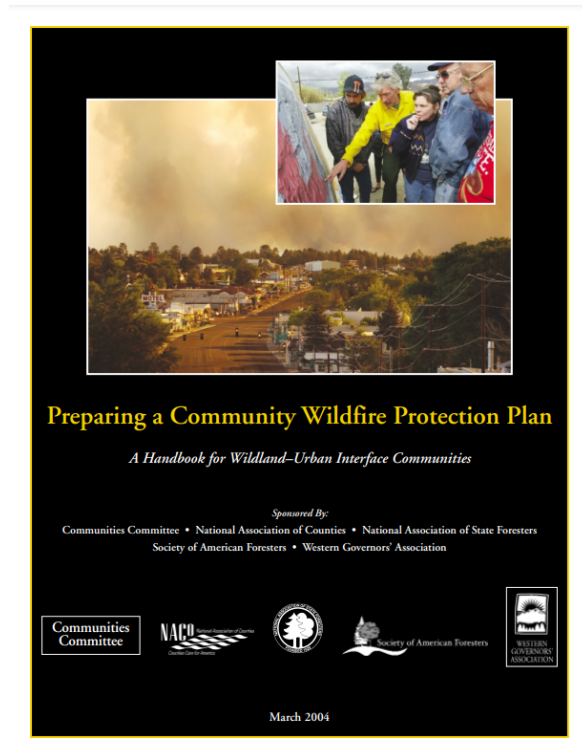
Land Tender was designed to improve communication among interested parties and between natural resource planners and the public.

Multiple land ownership jurisdictions, community protection agencies, indigenous tribes, and NGOs can work together on Land Tender to create, share, and compare multiple land management scenarios, projected over time, to help groups better understand the tradeoffs of decisions they are making today. The system facilitates communication among interested parties working together across vast landscapes to fundamentally reduce wildfire severity and improve community and wildland resilience.



Developing a plan

- Define the coverage/jurisdictional area
- Convene decision makers
- Involve federal agencies
- Engage interested parties
- Establish community base map
- Develop community risk assessment
 - Address fuel hazards; risk of wildfire; homes, businesses, infrastructure at risk; other community values at risk; local preparedness and firefighting capability
- Establish community hazard reduction priorities and recommendations to reduce structural ignitability
- Develop action plan and assessment strategy
- Finalize the plan



2020 Communities At Risk Report

Uses Quantitative Wildfire Risk Assessment, Oregon Department of Forestry Fire statistics, and Silvis Data to provide wildland fire risk to Oregon communities.

ests from Harm

lands are restored and risk of wildfire

FOREST ACTION PLAN



STRATEGY

Provide financial and technical assistance to rural fire organizations.

Facilitate Mutual Aid Agreements and coordinated training exercises.

Conduct risk and needs assessments to prioritize allocation of resources. Coordinate with local responders statewide to increase response capability at all levels.

Strengthen the SFA program to improve state and local capacity for forested protection system.

Develop policy option packages and legislative opportunities to enhance fire prevention and suppression capability.

Coordinate across ownership boundaries recognizing that forests are part of a larger water source areas, streams, airsheds, and forest lands.

Clarify the responsibility of preparing communities for wildfire by reducing the risk of high severity wildfire through defensible space treatments, and reintroduction of fire in appropriate areas. Promote smoke communication and preparedness.

<https://www.stateforesters.org/wp-content/uploads/2021/06/Action-Plan-National-Themes-Alignment-Assessments-5-19-2021.pdf>



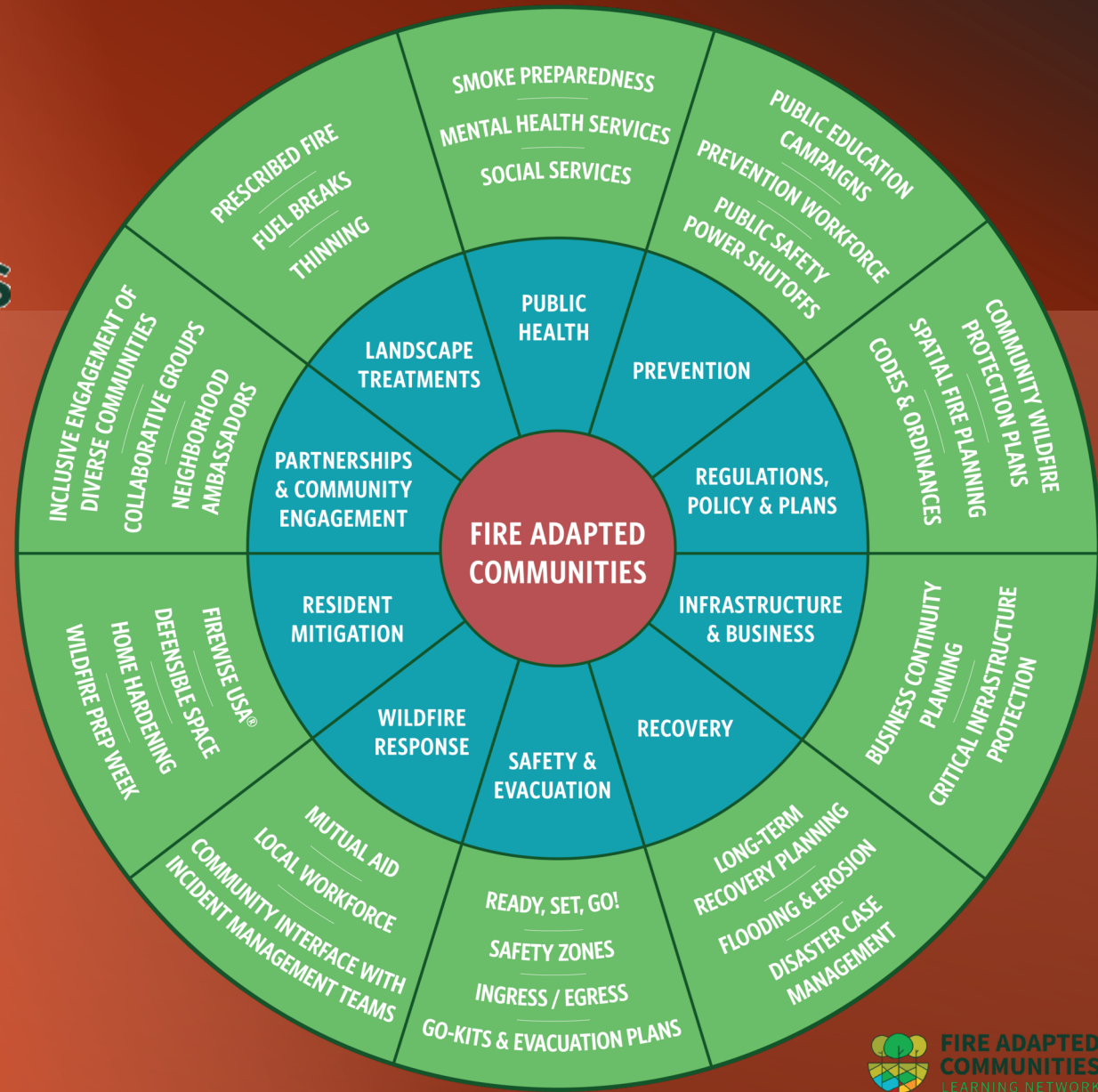
Sun Pass State Forest

Oregon Department of Forestry
May 2021





FIRE ADAPTED COMMUNITIES LEARNING NETWORK



<https://fireadaptednetwork.org/>

The background of the title section is a blurred image of a forest path. On the left side, there is a white silhouette of the state of Oregon with a torn-paper edge effect. A thin yellow vertical line is positioned to the right of the map.

FIRE ADAPTED OREGON

<https://www.oregon.gov/osp/programs/sfm/pages/fire-adapted-oregon.aspx>

Barriers to CWPP's



Capacity to create and maintain at the local level



Momentum/Turnover -continued leadership and involvement over time.



Costs associated with contracting writing the plan



Not getting the right people involved



Limiting involvement to expedite the process



Community involvement



It is a collaborative effort



Implementation efforts

CWPPs in Oregon



- HFRA allows communities to define their WUI
- Statewide Communities at Risk Assessment – CWPPs pick up local nuances
- Early support (technical and financial) and focus from ODF in plan development
- Many plans more locally-led now
- Sometimes incorporated into county NHMP as wildfire chapter
- Funding opportunities
- Some plans outdated/ haven't been updated

Christie Shaw
National Fire
Plan
Coordinator

Christie.shaw@odf.oregon.gov

Cell-503-871-2539

ODF site for CWPP information:

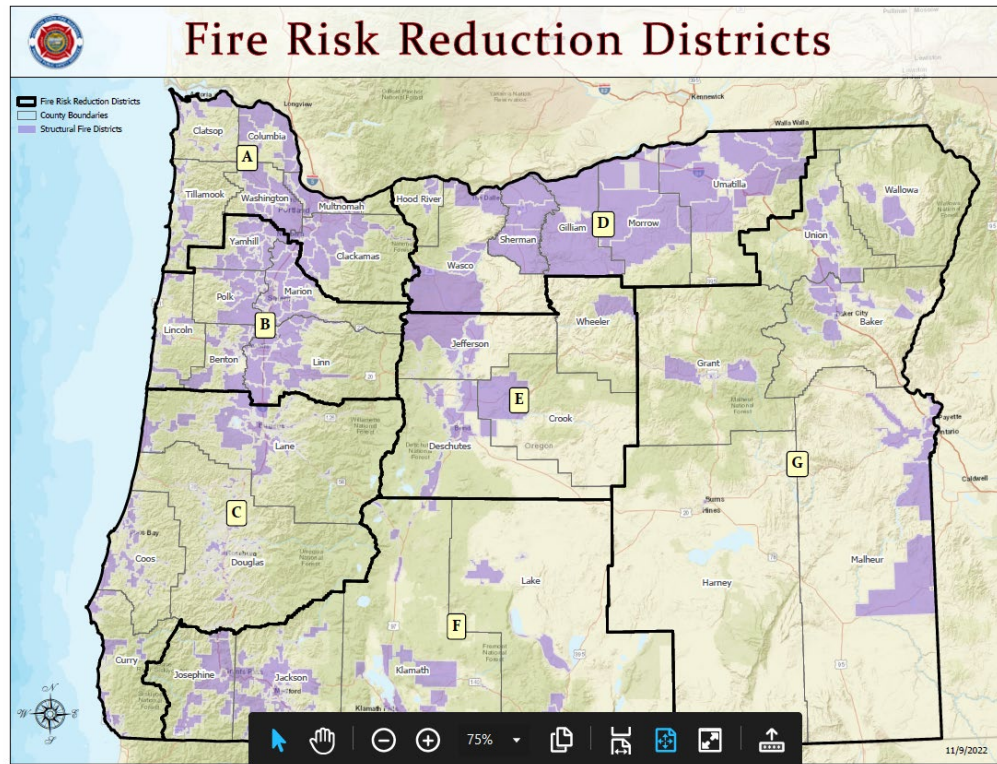
<https://www.oregon.gov/odf/fire/pages/cwpp.aspx>

Jen Warren

Risk Reduction Specialist

jennifer.warren@osp.oregon.gov

503-979-6625



<https://osfm-geo.hub.arcgis.com/apps/geo::osfm-field-staffing/explore>

Questions and Discussion

Upcoming OSFM Webinars

May

May 24: Noon – 1 p.m. | Emergency Preparedness

May 31: Noon – 1 p.m. | Fire-resistant plants and flammable plants

June

June 14: Noon – 1 p.m. | Public Safety Power Shut-off

June 21: 12:30 p.m. – 1:30 p.m. | Fire Season Forecast

Email: CRR@osp.oregon.gov

Website: Oregon.gov/sfm



OSFM Website

