

# *Defensible Space*

## **GIVE YOUR HOME A FIGHTING CHANCE**

OREGON STATE FIRE MARSHAL

### **CREATE SPACE.**



Space and prune trees.  
SEE EXAMPLE ON REVERSE.

### **KEEP IT CLEAN.**

Remove leaves, conifer needles, wood, bark mulch, and other debris from within 100 feet of the structure or to the property line.

### **CHECK THE ROOF.**

Keep roofs and gutters clean of leaves, conifer needles, and other debris.



### **EYE THE EAVES.**

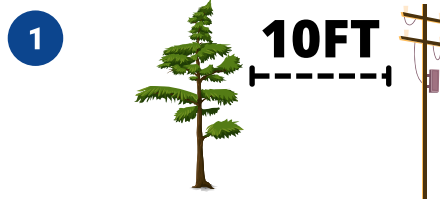
Keep flammable vegetation from growing directly under the eaves. A minimum of **five feet** from the structure is recommended.

### **MOVE THE PILE.**

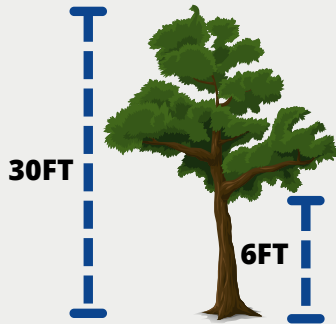
Keep firewood piles and lumber at least **30 feet** from any structure.



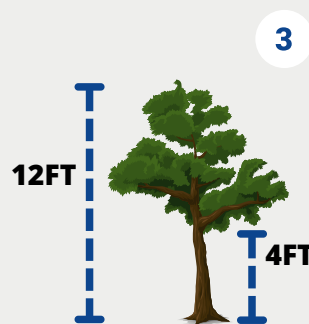
# POWER LINES



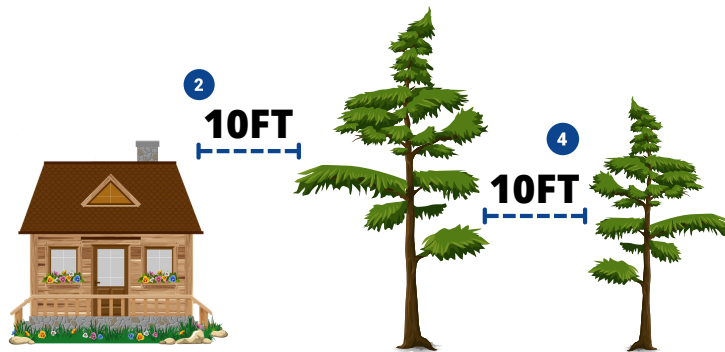
*Removing or trimming trees near power lines is dangerous. Only use an experienced, qualified contractor to perform this work.*



Trees and vegetation more than 18 feet, remove limbs up to six feet.



Trees and vegetation less than 18 feet, remove limbs up to 1/3 height



- 1 Trees and vegetation should be 10 feet from power lines.
- 2 Trees and vegetation should be 10 feet from buildings and chimneys.
- 3 For trees and vegetation more than 18 feet tall, remove branches six feet from the ground.  
For trees and vegetation less than 18 feet tall, remove branches up to 1/3 the height of the tree.
- 4 Trees and vegetation should be 10 feet from other trees.