






Scan to open Grant History Dashboard

## Map Legend

### Project Status

-  In-Process
-  Construction
-  Completed

## Boating Facility Grants

**Boating Facility Grants (BFG)** – Highest priority is for motorized boating uses. Funding for BFG comes from titling, registration and state marine fuel taxes paid by owners of registered boats.

**Waterway Access Grants (WAG)** – WAG highest priority for nonmotorized boating uses. Funding for WAG comes from waterway access permits for nonmotorized boats 10 feet in length and longer.

**Boating Infrastructure Grant (BIG)** – BIG funds short-term tie-up docks to serve recreational boats 26 feet in length or larger. Funding comes from the Federal U.S. Fish and Wildlife Service *Sport Fish and Restoration Program*.

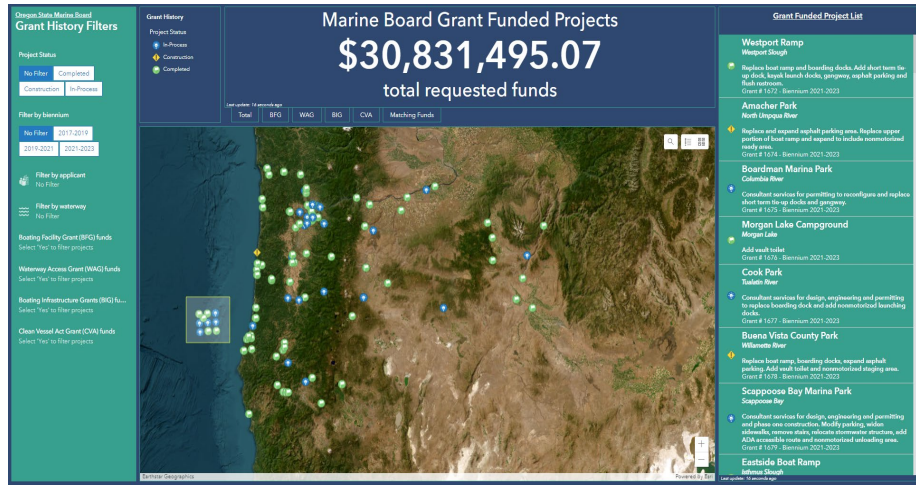
**Clean Vessel Act (CVA)** – CVA funds pumpouts, dump stations and floating restrooms used by recreational boats at public and private boating facilities. Funding comes from the Federal U.S. Fish and Wildlife Service *Sport Fish and Restoration Program*.

<https://experience.arcgis.com/experience/0cfb5eae438e4d9887ee80cb7de6b70c>

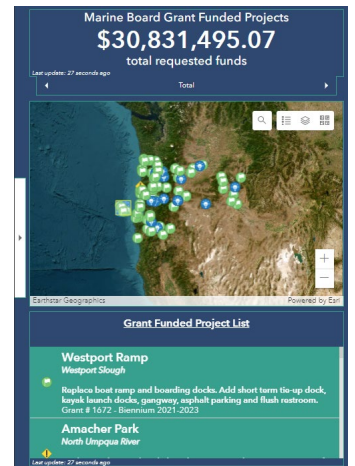
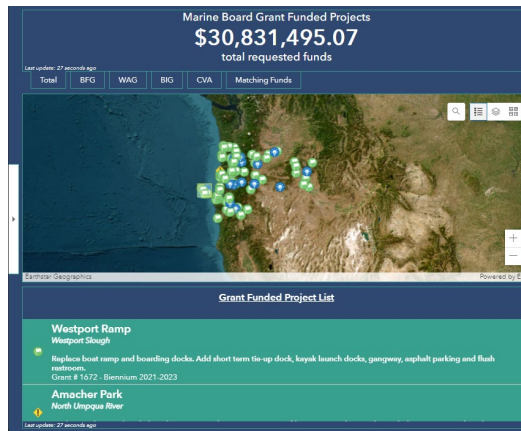
## Boating Facility Grant History Dashboard

### Oregon State Marine Board

View six years of grant-funded projects!



Desktop Version



Tablet Version (left) and Mobile Version (right)

Welcome to the Boating Facility Grant History Dashboard!

Use this dashboard to find information about grant-funded boating facility projects dating back to 2017. Zoom in to an area, use filters, and watch the funding panel and project list change. Then, Pan around the map and click on the project locations to discover more!

Click through the project locations to learn more about the **boating facility**. You will see details about the boating facility, including the facility operator, a grant funding breakdown, the applicant match amount, and photo(s) of the improvements.

Some projects may include education and access opportunities and regional or statewide applications. These may be found in an information box highlighted offshore on the map.

# Grant Programs History and Purpose

The State Marine Board (Board) Boating Facility Grant (BFG) was established in 1971 by the Oregon Legislature. BFG funding comes principally from fees paid by owners of registered motorboats; the Board gives funding priority to projects that serve or provide direct benefits to this user group.

In 1995, the Board became the designated agency to receive federal Clean Vessel Act (CVA) funds for pumpouts, dump stations, and floating restrooms.

In 2000, the Board was designated to receive federal Boating Infrastructure Grant (BIG) funds for short-term tie-up docks to serve recreational boats 26 feet in length or larger.

The Waterway Access Grant (WAG) program was established in 2019 by the Oregon Legislature. WAG funding is derived from selling waterway access permits for nonmotorized boats 10 feet in length or longer; the Board prioritizes projects that serve or provide direct benefits to this user group. The highest priority will be applications that include access improvements and education.

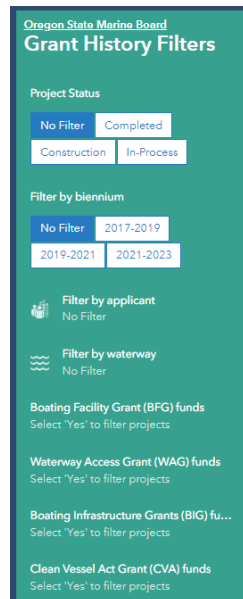
The Board does not own or operate any boating sites or facilities. Instead, it relies on the city, county, port, park districts, state and federal agencies, and tribal governments to apply for grants to make needed boating access improvements.

The public is welcome to provide comments on grant applications. For more information:

<https://www.oregon.gov/osmb/boating-facilities/Pages/Boating-Facility-Grant-Applications.aspx>

## Dashboard Features

### Grant History Filters



Use the grant history filters to refine the map by project status, grant biennium, grant applicant, waterway, and by the various grant program funding source.

The filters can be combined to work together. Toggle the filters on/off to see a filtered view of the dashboard.

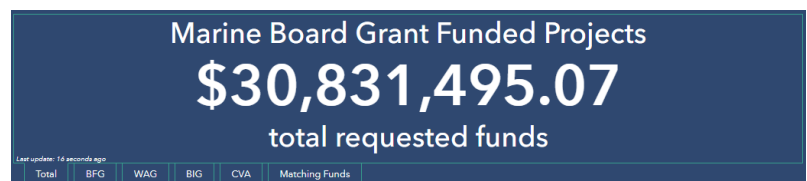
### Project List



The project list is sorted to display the most recent projects.

Clicking on a project will select the location on a map and prompt more information to appear on the map which includes a detailed funding breakdown.

### Grant Funding



Tab through the grant funding display to see the amount and source of funding. Use the map to zoom-in or pan around and watch the funding amounts change. Filtering on the side panel will also update these values.

*Check back often as we fill in more photos and update the status.*

*These data are provided by Oregon State Marine Board (OSMB) "as is" and might contain errors or omissions. The User assumes the entire risk associated with its use of these data and bears all responsibility in determining whether these data are fit for the User's intended use. The information contained in these data is dynamic and may change over time. The data are not better than the sources from which they were derived, and both scale and accuracy may vary across the data set. These data might not have the accuracy, resolution, completeness, timeliness, or other characteristics appropriate for applications that potential users of the data may contemplate.*