



# Willamette River Anchor Habitat Investments

## 2021 Grant Offering Solicitation Announcement

On behalf of funding partners Bonneville Power Administration (BPA) and Meyer Memorial Trust’s (MMT) Willamette River Initiative, OWEB is pleased to announce the 2021 grant offering for Willamette River Anchor Habitat Investments. Approximately \$1.033 million in BPA and MMT funding is available for eligible, recommended projects. Willamette Anchor Habitat Working Group partners will also allocate approximately \$1.4 million in OWEB Focused Investment Partnership (FIP) funding to projects prioritized in the partnership’s FIP initiative. The FIP funding is available pending OWEB board approval of the 2021-2023 spending plan in July 2021.

### Eligibility

This grant offering will consider technical assistance, restoration, and monitoring projects. There is no limit on funding requests for any of these project types. Projects must address one or more of the funding program’s three objectives:

- ~ Increased channel complexity and length,
- ~ Improved connectivity between the river and its floodplain, and/or
- ~ Expanded geographic extent and improved health of floodplain forests.

**This grant offering invites projects occurring on the mainstem Willamette River and below the lowest major federal dams on the following tributaries: McKenzie River (Cougar Dam), Middle Fork Willamette River (Dexter Dam), and North and South Santiam Rivers (Big Cliff Dam and Foster Dam, respectively).** Projects occurring in mainstem Willamette River anchor habitat locations will be prioritized for funding (see ‘Willamette River Anchor Habitats Map’ included in this solicitation announcement). The table below outlines this grant offering’s funding priorities.

*Table 1. Willamette Anchor Habitat Investments Funding Priorities*

Funding Priority*	Funders	Project Characteristics
1		FIP and non-FIP projects on the mainstem Willamette River and in an anchor habitat location.
2		Projects on the mainstem Willamette River outside of an anchor habitat location.
3		Tributary projects below major federal dams: McKenzie River (Cougar Dam), Middle Fork Willamette River (Dexter Dam), and North and South Santiam Rivers (Big Cliff Dam and Foster Dam, respectively)

\*After application of evaluation criteria.

While applicants will submit a single proposal to this grant offering, each funder has specific funding eligibility and prioritization criteria. Funders will apply the criteria outlined below in the course of reviewing proposals and making funding decisions.

### OWEB

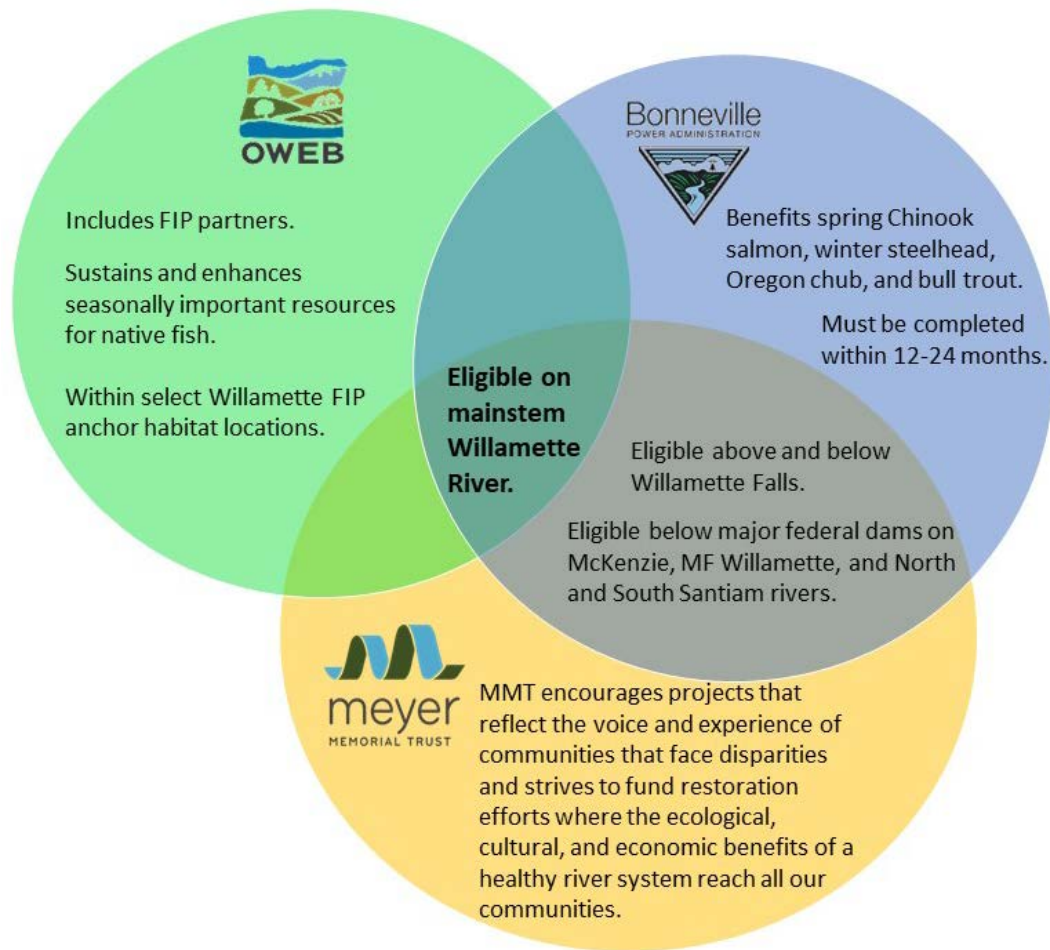
- Eligible applicants include partners in the Willamette Anchor Habitat Working Group that are pursuing a project prioritized in the partnership's FIP initiative.
- FIP project locations occur in select anchor habitat locations on the mainstem Willamette River and are illustrated in the 'Willamette FIP Anchor Habitats Map' included in this solicitation announcement.
- The goal of the FIP initiative funding is to sustain and enhance seasonally important resources for native fish.

### MMT

- Eligible MMT project locations occur on the mainstem Willamette River (above and below Willamette Falls; Table 1, funding priorities 1 and 2), and below the lowest major federal dams on the following tributaries: McKenzie River (Cougar Dam), Middle Fork Willamette River (Dexter Dam, and North and South Santiam Rivers (Big Cliff Dam and Foster Dam, respectively; Table 1, funding priority 3).
- The goal of MMT's Willamette River Initiative funding is to support river health and provide community benefits through project development, research/monitoring, and restoration.
- MMT encourages projects that reflect the voice and experience of communities that face disparities and strives to fund restoration efforts where the ecological, cultural, and economic benefits of a healthy river system reach all our communities.

### BPA

- Eligible MMT project locations occur on the mainstem Willamette River (above and below Willamette Falls; Table 1, funding priorities 1 and 2), and below the lowest major federal dams on the following tributaries: McKenzie River (Cougar Dam), Middle Fork Willamette River (Dexter Dam, and North and South Santiam Rivers (Big Cliff Dam and Foster Dam, respectively; Table 1, funding priority 3).
- The goal of BPA's Willamette Habitat Protection and Restoration Program funding is to address impacts of the Willamette Project pursuant to Bi-Op RPA 7.1. Therefore, BPA will only fund projects that directly benefit the following native fish species: Upper Willamette River (UWR) spring Chinook salmon and winter steelhead, Oregon chub, and bull trout.
- Projects that propose restoration activities including large wood or sediment placement (e.g., gravel augmentation, sediment addition through restored natural river function) will be prioritized for BPA funding within their respective funding priority categories (Table 1). These restoration activities are outlined as interim measures 1 and 2 in the 'Willamette Valley Project Interim Measures Implementation Plan, June 2020'.
- All BPA grants must be completed within 12-24 months of the grant start date. Awarded applicants will work with their assigned BPA project manager to construct a grant timeline, finalize the BPA budget, and review other project details to develop the BPA contract.



### The Strongest Proposals...

- Occur in a designated anchor habitat area (see ‘Willamette River Anchor Habitat Maps’ below).
- Work at scale across contiguous acres.
- Occur in the 2-year inundation zone (see [SLICES](#) website).
- Are identified in any of the following:
  - ~ [Upper Willamette Conservation and Recovery Plan for Chinook Salmon and Steelhead](#) (click on the “Main Body of Plan”)
  - ~ [Lower Columbia River Conservation and Recovery Plan for Oregon Populations of Salmon and Steelhead](#)
  - ~ [Recovery Plan for the Coterminous United States Population of Bull Trout](#)
  - ~ [Recovery Plan for Oregon Chub](#)

*Anchor Habitats:* The Willamette River anchor habitats approach is the long-term strategy to first protect and restore a series of relatively intact habitats with high conservation values in a stepping stone fashion along the river corridor. Anchor habitats are located at major tributary confluences and river sections where there are opportunities to reconnect the river to its historic floodplain.

## How to Apply

All applicants must submit an application through [OWEB's online application system](#) according to the deadlines outlined in the 2021 grant cycle timeline outlined below. Applications will not be received after the deadlines.

Applicants are required to upload two supplemental forms specific to this grant offering to their application prior to submitting: 1) the Supplemental Application Questionnaire; and, 2) the Supplemental Application Budget. Both forms, as well as this solicitation announcement, are available on OWEB's Grant Management System (OGMS) or by contacting Andrew Dutterer, OWEB ([andrew.dutterer@oregon.gov](mailto:andrew.dutterer@oregon.gov)).

**If you intend to submit an application, email Andrew Dutterer, OWEB ([andrew.dutterer@oregon.gov](mailto:andrew.dutterer@oregon.gov)) with a notification of your intent to apply by Wednesday, March 31.** This notification should include: contact information for the project lead, a project name, and project location. This email of intent to apply will be used for planning purposes, and applicants who have not submitted this notification remain eligible to apply.

**Applications are due to OWEB Friday, April 16, 5 pm.**

Applications submitted on April 16 will be reviewed by a technical review team (TRT) in late May and discussed on site tours arranged by OWEB staff in June/July. Applications will be available for editing through OWEB's online application system until **the deadline for revised applications on Friday, August 20, 5 pm.**

Note: The funding request for revised applications (due August 20) may not exceed the amount of funding requested in the original application (due April 16), unless the additional request is in direct response to TRT feedback.

**Below is a summary of updates to the solicitation and review process (described at points above and reflected in the timeline below). These updates were first implemented in the 2020 grant cycle and will continue in 2021.**

- The first application submitted (April 16) will be done through OWEB's online application system. The funding program will no longer use the pre-proposal application form that was used in the past.
- Technical review meeting #1 will occur before site tours, and applicants will receive project feedback before the site tours. This is intended to allow for discussion of that feedback and potential project modifications during the site tours.
- Technical review meeting #1 will not include a decision to invite or not invite applicants to submit a revised applications. All applications submitted on April 16 will continue through the review process to Technical review meeting #2.
- In addition to projects occurring in anchor habitat locations on the mainstem Willamette River, MMT and BPA also invite proposals that occur in non-anchor habitat locations on the mainstem Willamette River, as well as proposals that occur below the lowest major federal dams on the McKenzie River (Cougar Dam), Middle Fork Willamette River (Dexter Dam), and North and South Santiam Rivers (Big Cliff Dam and Foster Dam, respectively).

## 2021 Grant Cycle Timeline

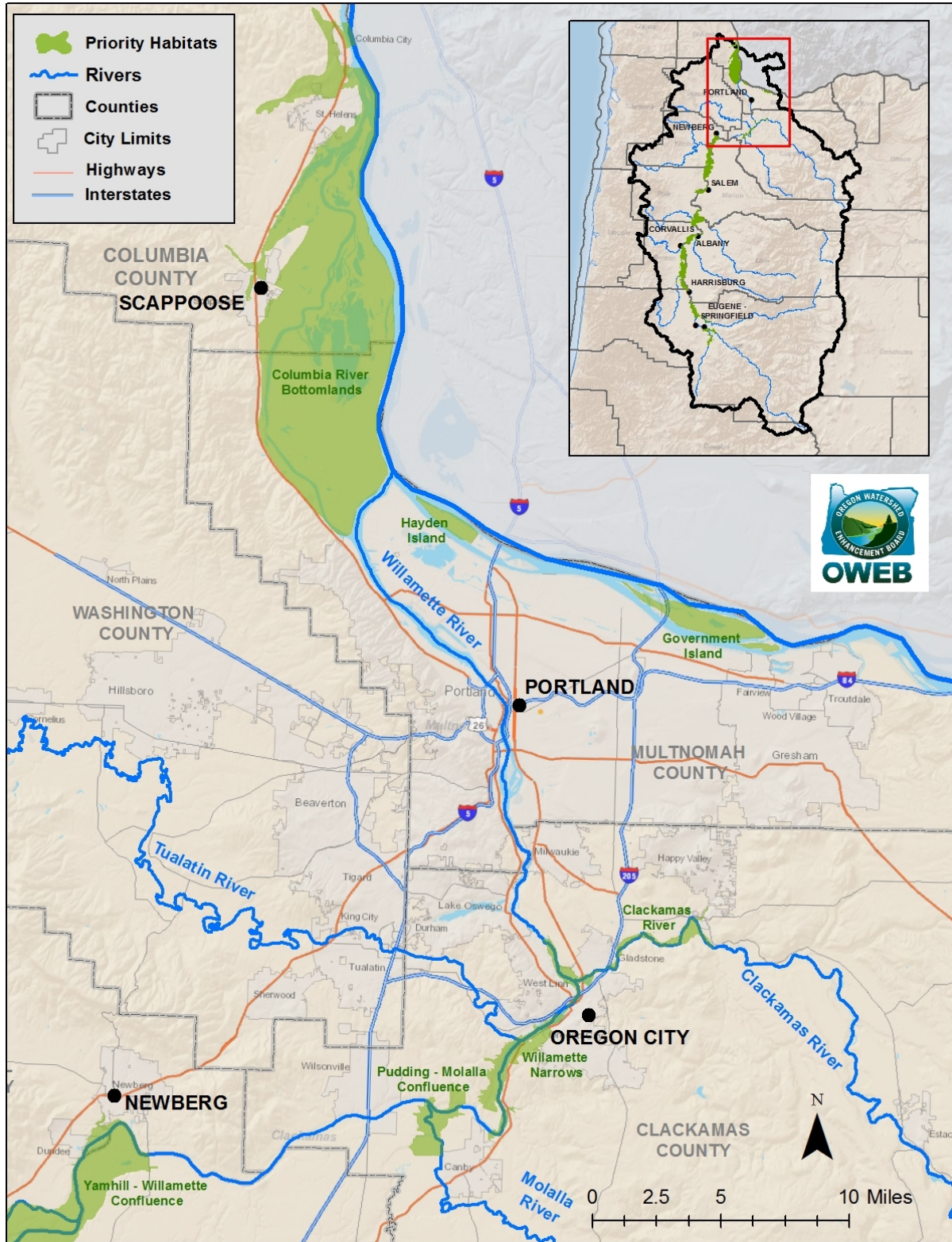
<b>March 31</b>	<b>Email intent to apply to OWEB by 5 pm.</b> <i>(See 'How to Apply' section above.)</i>
<b>April 16</b>	<b>Applications due to OWEB by 5 pm.</b>
May 19	Technical review meeting #1 <i>(Technical review feedback provided to applicants 1 week after review.)</i>
June 28 – July 9 (TBD)	Site tours <i>(Virtual or in-person format TBD.)</i>
<b>August 20</b>	<b>Revised applications due to OWEB by 5 pm.</b>
September 29	Technical review meeting #2 <i>(Includes funding recommendations. Summary results provided to applicants following the meeting.)</i>
October 7	Habitat Technical Team (HTT) final funding determinations for BPA.
October	Application evaluations provided to applicants.
November – December	MMT final funding determinations.
December – until complete	Grant agreements/contracts executed with each funder.

### Questions?

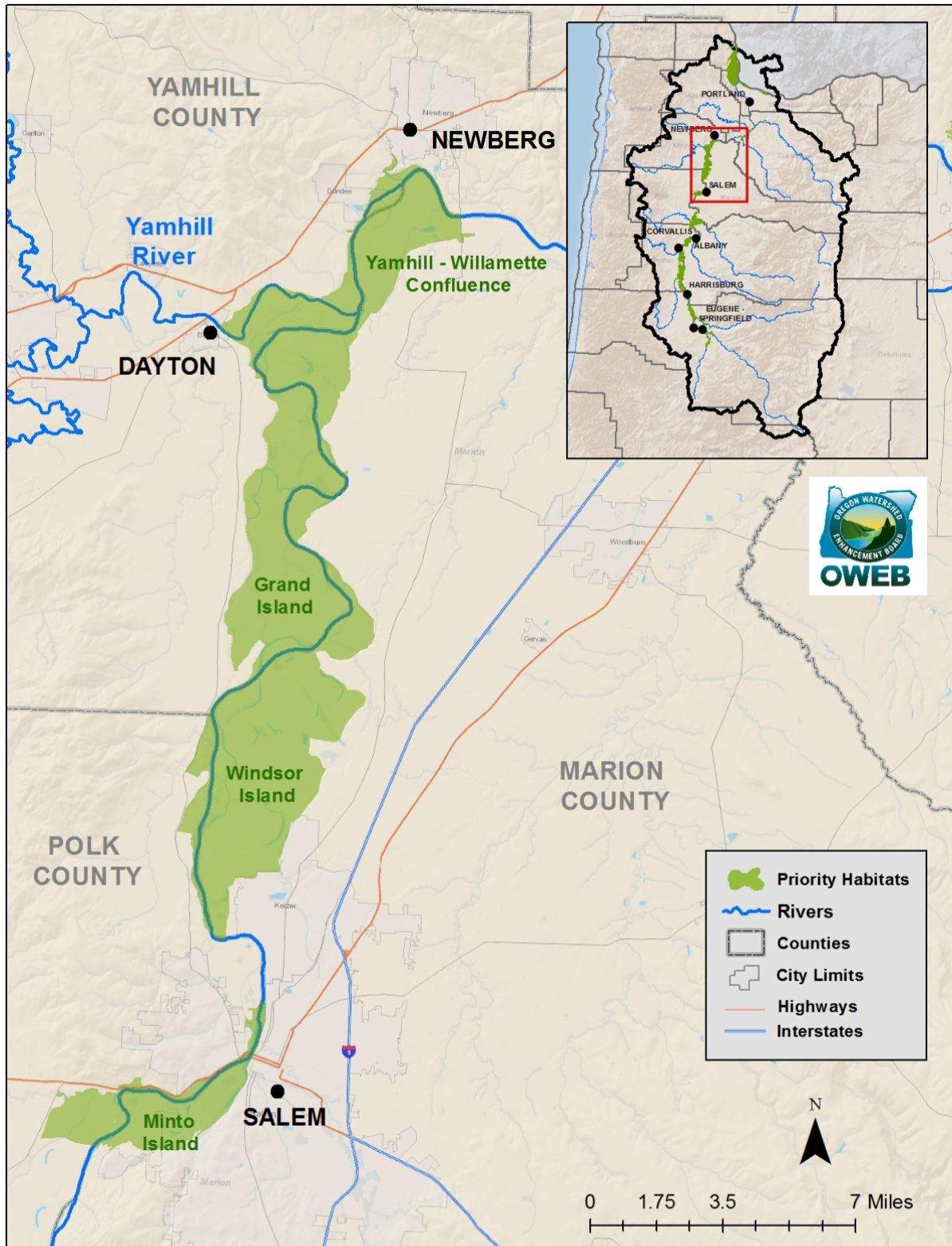
Contact Andrew Dutterer (OWEB), [andrew.dutterer@oregon.gov](mailto:andrew.dutterer@oregon.gov), 971-345-7233

# Willamette River Anchor Habitat Maps

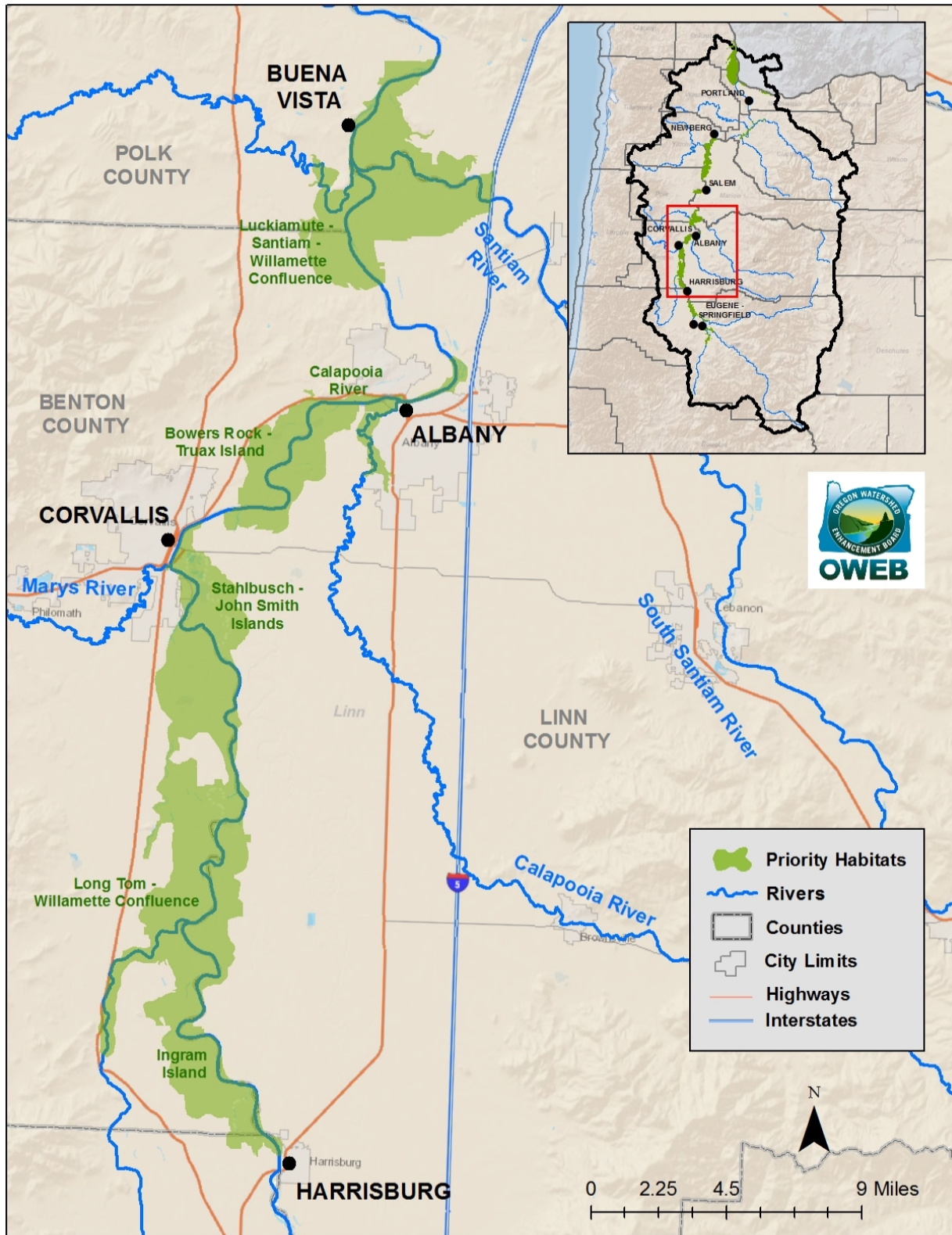
## Molalla/Pudding River Confluences to Columbia River Confluence



# Minto Island to Yamhill River Confluence

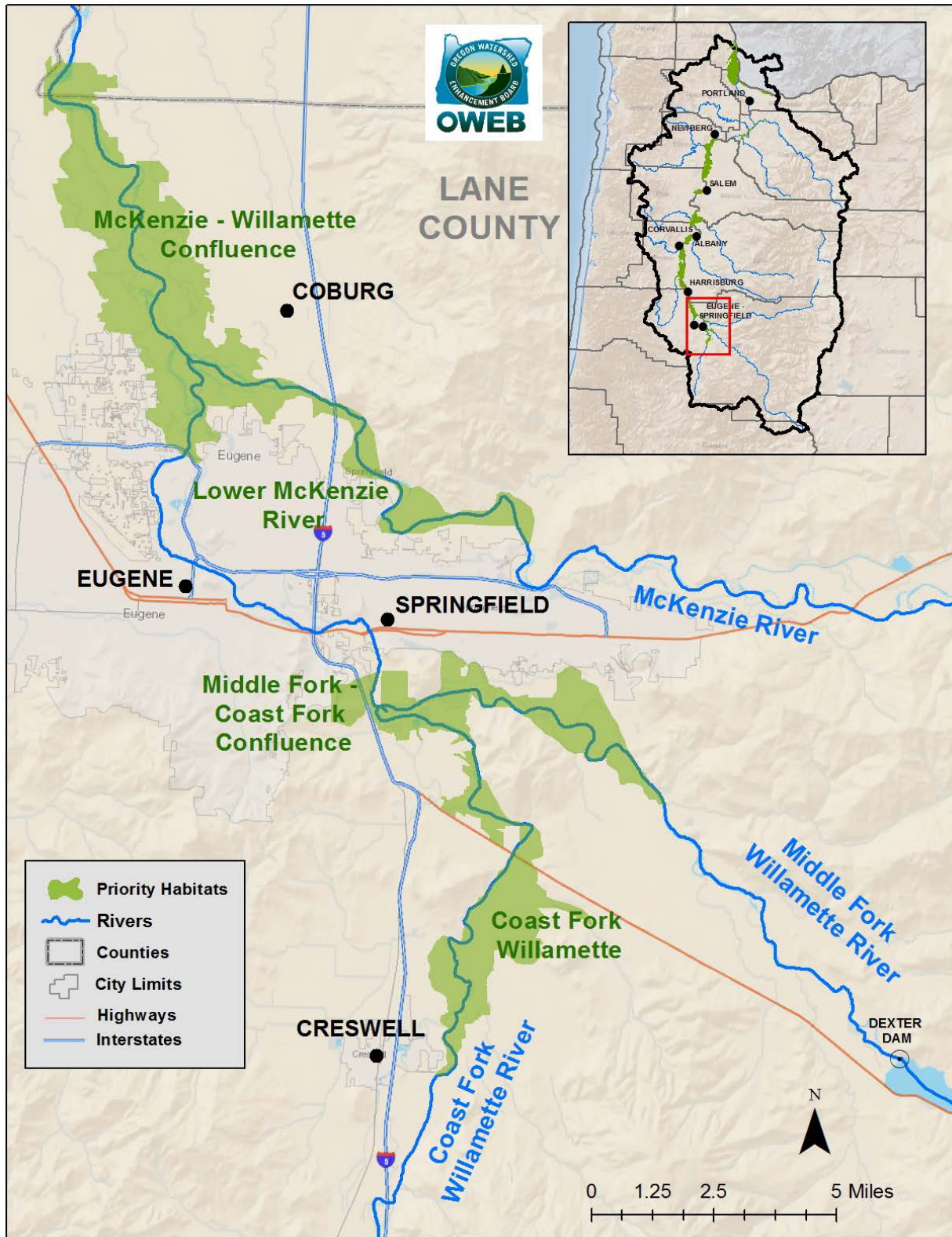


# Long Tom River Confluence to Santiam River Confluence



Date: August 2016, Software: ESRI ArcMap 10.3.1, Coordinate System: NAD 1983 Oregon Statewide Lambert Feet Intl, WKID: 2992 Authority: EPSG Document Path: Z:\Maps\Focused Investments\Willamette\Willamette\_BVH.mxd

# Middle Fork – Coast Fork Confluence to McKenzie River Confluence



# Willamette FIP Anchor Habitats Map

Projects occurring in the **dark green** areas of the map below are only eligible for sponsorship by partner organizations in the Willamette Anchor Habitat Working Group under their FIP initiative.

