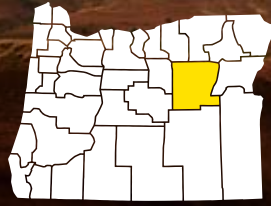


# Investments in Grant County



## Oregon Watershed Enhancement Board (OWEB) mission:

*To help protect and restore healthy watersheds and natural habitats that support thriving communities and strong economies.*



**Since 1999, OWEB has awarded nearly \$38.3 million in grants in Grant County.**

(All Fund Sources Statewide, 1999-2024: \$925.9 million)

## Restoration and Improvements Accomplished in Grant County (1999-2024):



**433** instream and riparian  
habitat miles treated  
6,959 statewide



**1,335** miles of fish passage  
made accessible  
7,347 statewide



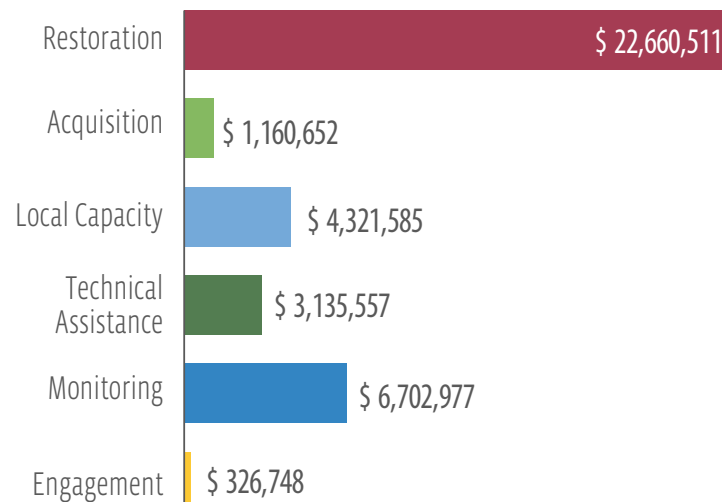
**143,848** upland habitat  
acres improved  
1,512,279 statewide



**282** wetland or estuarine  
habitat acres created  
or restored  
66,516 statewide

## County Grant Awards by Project Type in Grant County (1999-2024):

(Numbers below are in millions of dollars)



## Local Economies and Communities Benefit

OWEB funds are used to pay those who design and implement projects, hire field crews, and buy goods and services they need to get the job done.



**Every \$1 million of OWEB grant  
investments creates 15-24 local jobs**

(University of Oregon study)



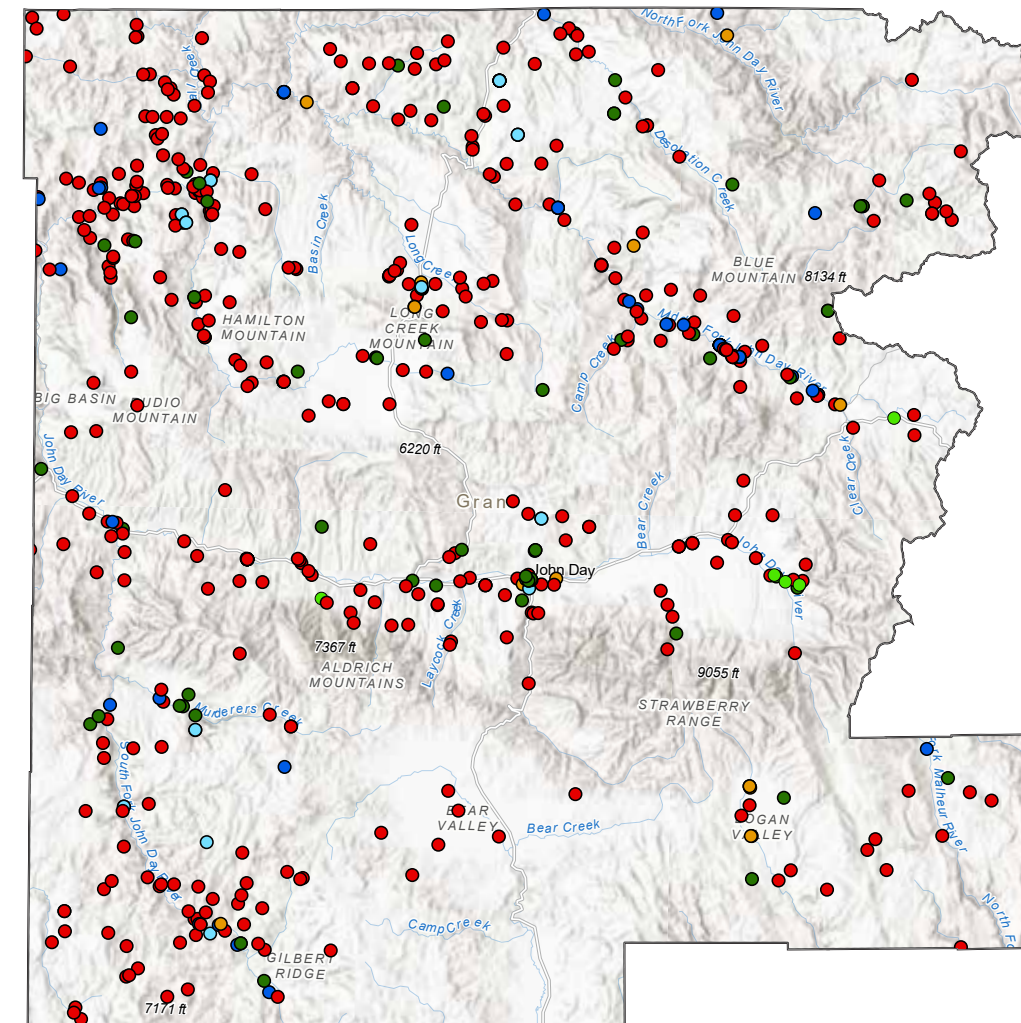
**90% of OWEB grant dollars  
support local economies**

Numbers generated for this fact sheet are based on the best data available as of 12/31/2024 from the Oregon Watershed Restoration Inventory and OWEB's Grant Management System. "Local Capacity" includes Council Capacity and Soil & Water Conservation District grants.

## About OWEB

The Oregon Watershed Enhancement Board cares about and invests in the long-term health of Oregon's watersheds, both on the land and in the water that flows through it. Together with local partners across the state of Oregon, we invest funds from Lottery, General Fund, federal Pacific Coastal Salmon Recovery Fund, Salmon License Plates, and other sources in local communities. These funds help protect and restore healthy watersheds and natural habitats that support thriving communities and strong economies. Through all of our work, we are dedicated to the belief that:

- Healthy watersheds sustain healthy communities.
- Every Oregonian plays a role in the health of our watersheds.
- It takes broad partnership to support resilient watersheds.
- Improving our watersheds requires taking the long view.



## Grant County OWEB Grant Project Types

- Restoration
- Acquisitions
- Local Capacity
- Technical Assistance
- Monitoring
- Engagement

Map: Esri, NASA, NGA, USGS, Oregon Metro, Oregon State Parks, State of Oregon GEO, Esri, HERE, Garmin, SafeGraph, FAO, METI/NASA, USGS, Bureau of Land Management, EPA, NPS

## Contact

**Eric Hartstein, Senior Policy Coordinator**  
503-910-6201, [eric.hartstein@oweb.oregon.gov](mailto:eric.hartstein@oweb.oregon.gov)  
775 Summer Street NE #360, Salem OR 97301, 503-986-0178

Photo: Samiamx, cc

[www.oregon.gov/oweb](http://www.oregon.gov/oweb)

