

Managing wildfire risk in Hawai'i through stakeholder and agency coordination

June 18, 2025

Oregon Wildfire & Electric Collaborative Workshop #12



Hawaiian Electric – who we are

Serving the State of Hawaii for 133 years, publicly traded on the NYSE under our parent company, HEI (ticker HE)



Kauai

Over 95% of state's population served by Hawaiian Electric and its subsidiaries

HECO

Customers: 308,721
Rate base: \$2.69bn¹
Renewable generation: 31%

Oahu



Molokai

Lanai

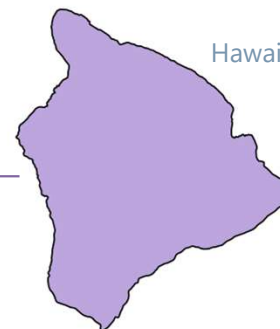
Maui



MECO

Customers: 73,788
Rate base: \$0.60bn¹
Renewable generation: 41%

Hawaii



HELCO

Customers: 88,103
Rate base: \$0.58bn¹
Renewable generation: 59%

Island	Population ¹	% of Population ¹	Served by Company
Oahu	995,638	69%	✓
Maui, Lanai, Molokai	164,433	12%	✓
Hawaii Island	206,315	14%	✓
Kauai, Niihau	73,810	5%	
Total	1,435,138	100%	

Source: Hawaii Facts and Figures, January 2024, State of Hawaii, Department of Business, Economic Development & Tourism

Note: All data as of 12/31/24 unless otherwise noted

¹ Rate base as of 12/31/23.

WILDFIRE SAFETY STRATEGY



Wildfire Safety Strategy Objectives

The main objective of Hawaiian Electric's 2025-2027 Wildfire Safety Strategy (WSS) is to minimize ignition risks from infrastructure through:

- **Identifying areas of high risk** and drivers of risk
- **Addressing drivers of risk** through a four-pillar approach to wildfire safety
- **Engaging with community members** and partners to inform our strategies, learn from and coordinate with each other
- **Continuously improving strategies** and implementation by identifying and tracking key metrics and data
- **Estimating costs and schedules** based on the information we have today in order to inform plans



WILDFIRE SAFETY





Wildfire Safety Working Group Documents

Wildfire Safety Working Group (WFSWG), is made up of broad cross section of industries and governmental agencies that have an interest in wildfire safety. The goal of the WFSWG is to support the development of Hawaiian Electric's Wildfire Safety Strategy (WSS), to inform and engage stakeholders on various aspects of the Company's strategy, and to afford stakeholders and partners opportunities to provide their knowledge, feedback and input to the strategy.

Wildfire Safety WG Timeline

- Wildfire Safety Symposium April 10-11
- Mitigation Strategies and Priorities August 14
- Metric and Performance Tracking September 3 (Previously Sept 4)
- Submit WSS to the PUC December
- Risk Map July 31
- August 21 Future Operational Strategies and PSPS Enhancements
- October Putting It All Together

Meeting Documents

September 5, 2024

Discussed the scope and content of the WSS and proposed performance metrics to track the WSS.

- Presentation Slides (PDF)
- Meeting Notes (PDF)
- Draft Wildfire Safety Strategy Content (PDF)

August 21, 2024

Discussed operational strategies and PSPS enhancements. The National Weather Service presented on wildfire and red flag warning history in Hawaii.

- Presentation Slides (PDF)



- The journey to develop our Wildfire Safety Strategy started with a symposium that included over 100 lawmakers, emergency agencies, first responders, landowners, infrastructure owners and utilities.
- This collaboration continued through working group meetings held over the course of 2024.

Key messages of our Wildfire Safety Strategy puts our utility work into context of society's greater wildfire safety responsibilities:

Core Concept 4: Everyone plays a role

***Everyone has a role
in adapting to wildfire***



Land
Stewards

Residents

Policy-makers
& Community
Leaders

Emergency
responders

Planners
Developers
Utilities

Source: HWMO, Hawaiian Electric Wildfire Safety Symposium, April 2024

Core Concept 2: Wildfire risk can be reduced

**There is a lot we can do to
reduce wildfire occurrence, fire spread, & severity**



Reduce ignitions



**Manage land &
reduce fuel**



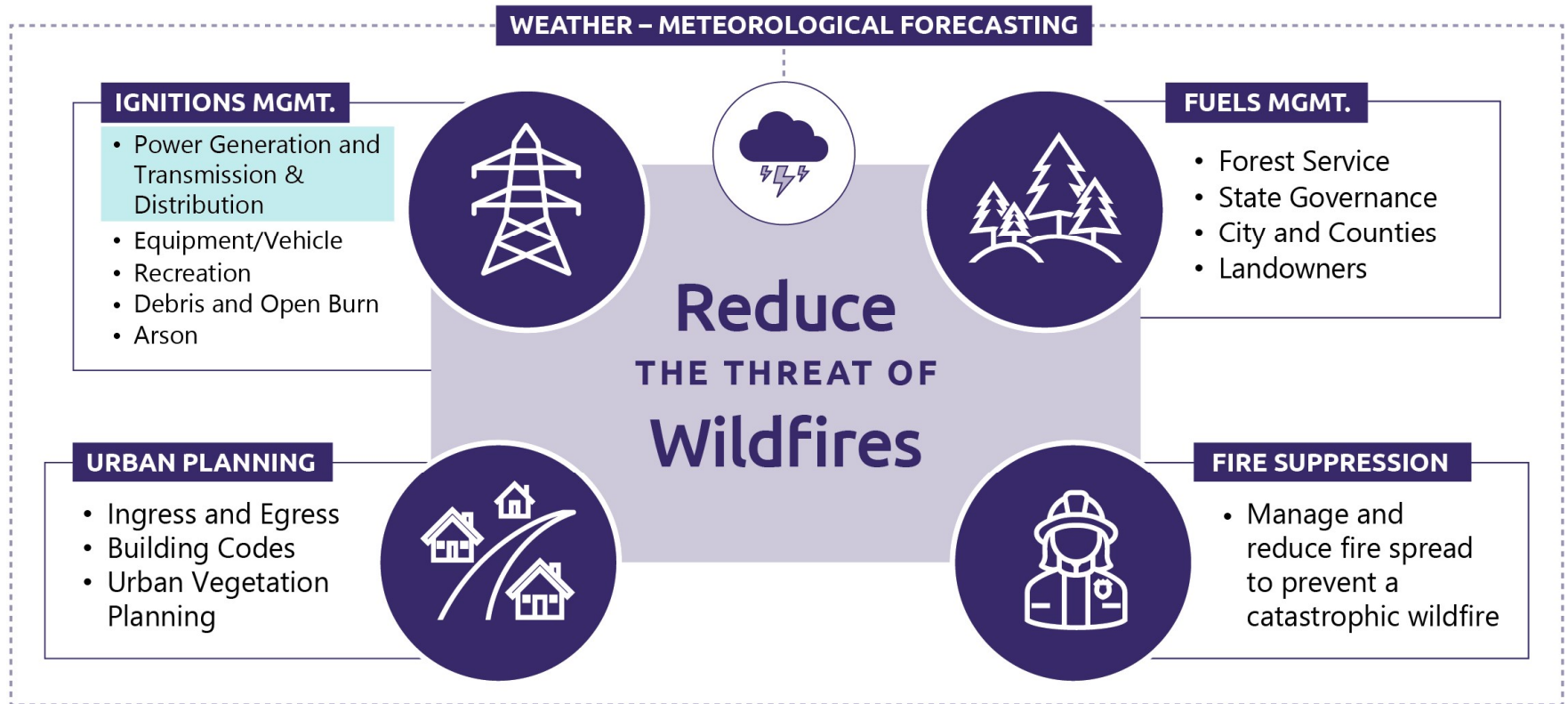
**Make homes & towns safer
& ignition-resistant**



WILDFIRE SAFETY



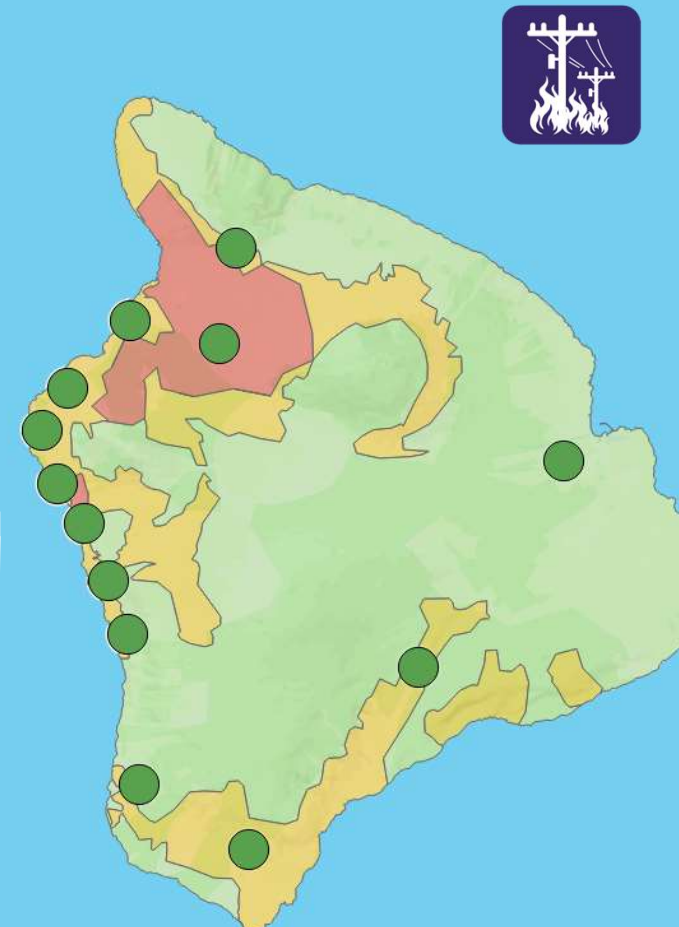
Collective Approach





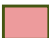
WILDFIRE SAFETY



**Video camera
deployments
provide early
detection of
ignitions of all
sources and
provides utility
operations real-
time situational
awareness**



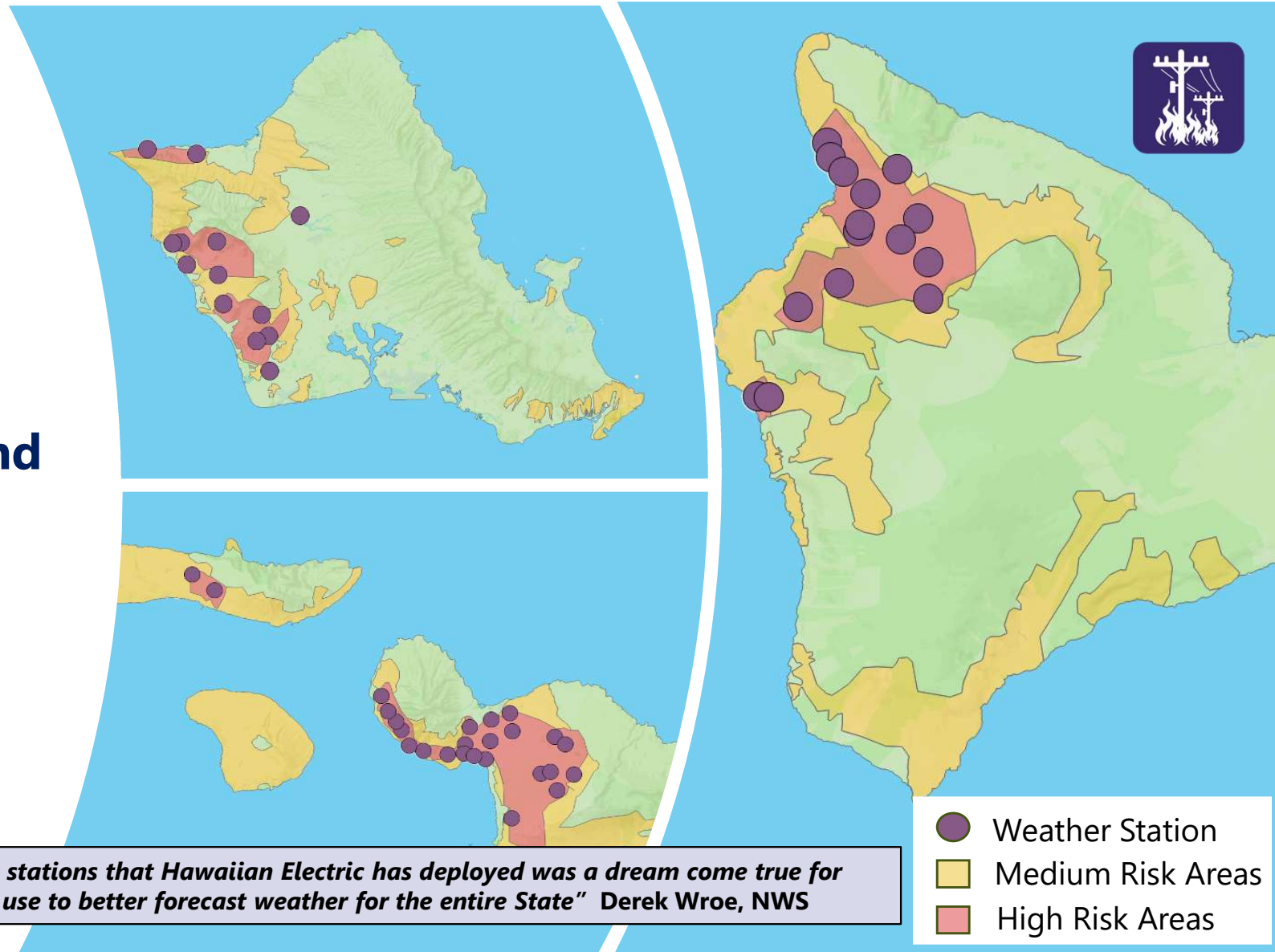
"This system is a transformative asset for our islands, offering critical real-time data that protects lives, property, and natural resources." - Fire Chief Kazuo Todd, Hawaii County

-  Video Camera
-  Medium Risk Area
-  High Risk Area

Weather station deployments aid in PSPS and other operational actions



"The weather stations that Hawaiian Electric has deployed was a dream come true for them in their use to better forecast weather for the entire State" Derek Wroe, NWS



Stakeholder and community partnerships created

- Hawai'i Wildfire Management Organization
 - Hawaiian Electric funding enables expansion of Hawai'i Firewise Program to advance wildfire safety planning & actions at neighborhood level across five islands
- Mālama Learning Center & Ka'ala Farm
 - Hawaiian Electric funding builds partnerships with landowners, schools, parents, students & West O'ahu community to install firebreak, paired with native reforestation & wildfire safety outreach & education
- Community engagement
 - More than 60 community meetings across service territories on wildfire safety and PSPS, focused on vulnerable populations
- Emergency management and first responders
 - Enhanced communication and coordination in preparation for PSPS and other emergencies; new level of collaboration emerges



WILDFIRE SAFETY



Community and stakeholder engagement continues

Tailored engagement across islands:

- Emergency Preparedness Fairs (East O'ahu, Lanikai, Windward Coast)
- Moloka'i Resource Fair
- PSPS Workshops and Education (Leeward Coast, Maui County, Upcountry)
- Waimea Fall Festival and seniors' presentation
- He Ala Pono Electric Vehicle and Sustainability Fair
- Hawai'i County Civil Defense Disaster Preparedness Fair (Hilo)

Hawai'i Island PSPS Customer and Community Engagement



COMMUNITY RESILIENCE FAIR Waikōloa



Hawai'i County Council Member James Hustace and Hawaiian Electric invite you to a free Community Resilience Fair in Waikōloa! Visit the Open House to learn what you can do to prepare for emergencies and keep your home and community safe. The Community Conversation will begin with a presentation by Hawaiian Electric about their Wildfire Safety Strategy to reduce wildfire risk and protect communities in high-risk areas. It will be followed by a moderated panel discussion about wildfire safety, emergency preparedness, and how we can work together to support each other. Light refreshments provided.

Thursday, June 26, 2025

Waikōloa Elementary & Middle School cafeteria
68-1730 Ho'oko Street, Waikōloa

4 p.m. to 5 p.m.
Open House

5 p.m. to 6 p.m.
Community Conversation *

6 p.m. to 7 p.m.
Open House

Waikōloa Elementary & Middle School cafeteria
68-1730 Ho'oko Street, Waikōloa

4 p.m. to 5 p.m.
Open House

5 p.m. to 6 p.m.
Community Conversation *

6 p.m. to 7 p.m.
Open House

* Community Conversation also live-streamed on youtube.com/@WildfireWaikoloa

EVENT PARTICIPANTS

Hawai'i County Civil Defense Agency
Hawai'i Energy
Hawai'i Fire Department
Hawai'i Police Department
Hawai'i Wildfire Management Organization
Hawai'i Water Service
Hawaiian Electric
Pohakuloa Training Area
Team Rubicon
Waikōloa Village Association
Hawai'i County Civil Defense Agency
Hawai'i Energy
Hawai'i Fire Department
Hawai'i Police Department
Hawai'i Wildfire Management Organization
Hawai'i Water Service
Hawaiian Electric
Pohakuloa Training Area
Team Rubicon
Waikōloa Village Association
Wildfire Safety Advocates of Waikōloa
WVA Firewise

AS OF 6/12/2025

Community Conversation with special guests:



James.Hustace@hawaiicounty.gov

CommunityRelations.HawaiiIsland@hawaiianelectric.com



Mahalo for your time.

HAWAIIANELECTRIC.COM/WILDFIRESAFETY