

Portland General Electric

Daily Situational Awareness

Chris Walsh

Senior Technical Program Manager, Asset and Wildfire Risk

June 18, 2025

Wildfire Season Situational Awareness Goals:

1. Maintain awareness of fire weather conditions
2. Maintain awareness of fuels conditions
3. Maintain awareness of wildfire risk
4. Maintain awareness of active wildfires

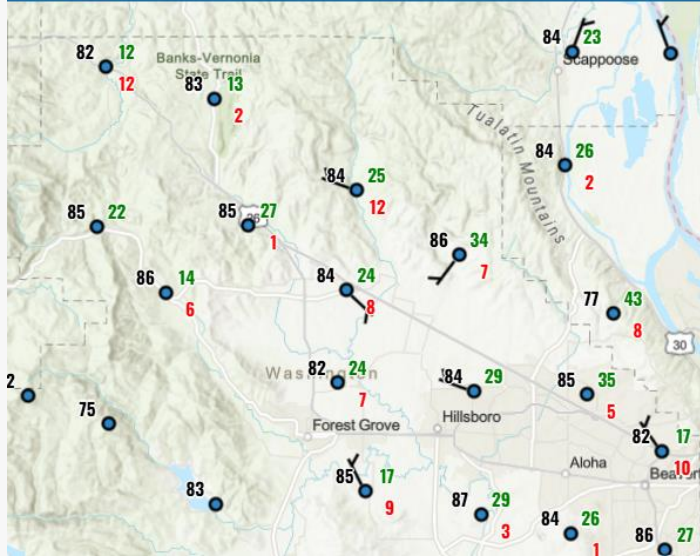
AGENDA

Fire Weather Situational Awareness

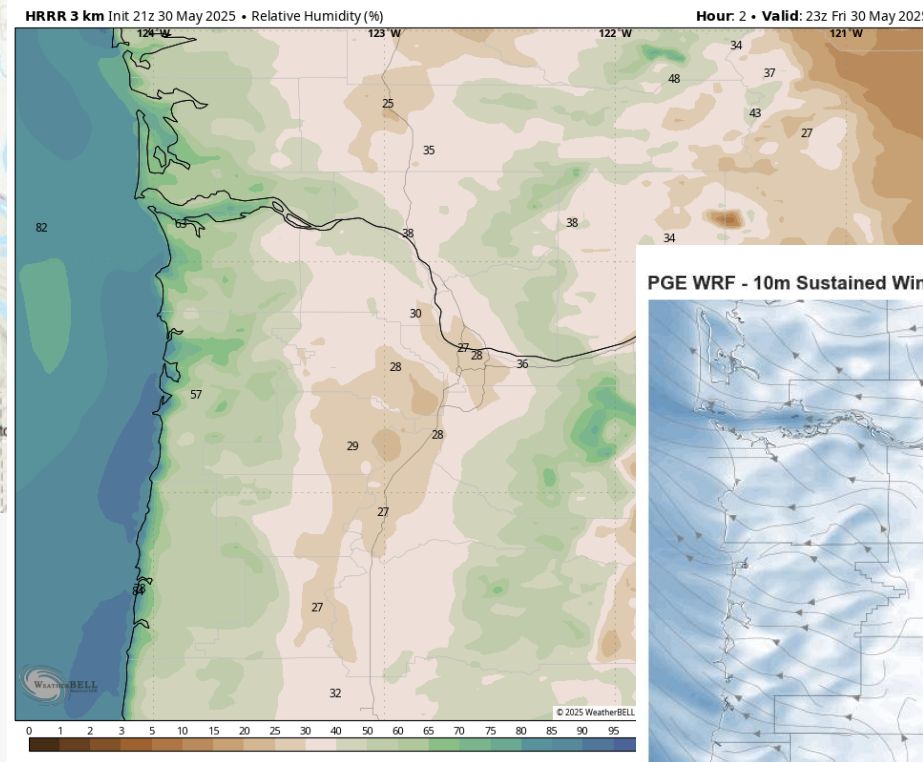
Tracked Data:

1. Winds
2. Relative Humidity
3. Hot-Dry-Windy Index
4. Evaporative Drought Demand Index
5. U.S. Drought Monitor
6. National Weather Service Watches/Warnings

Fire Weather Assessment: Wind and Humidity

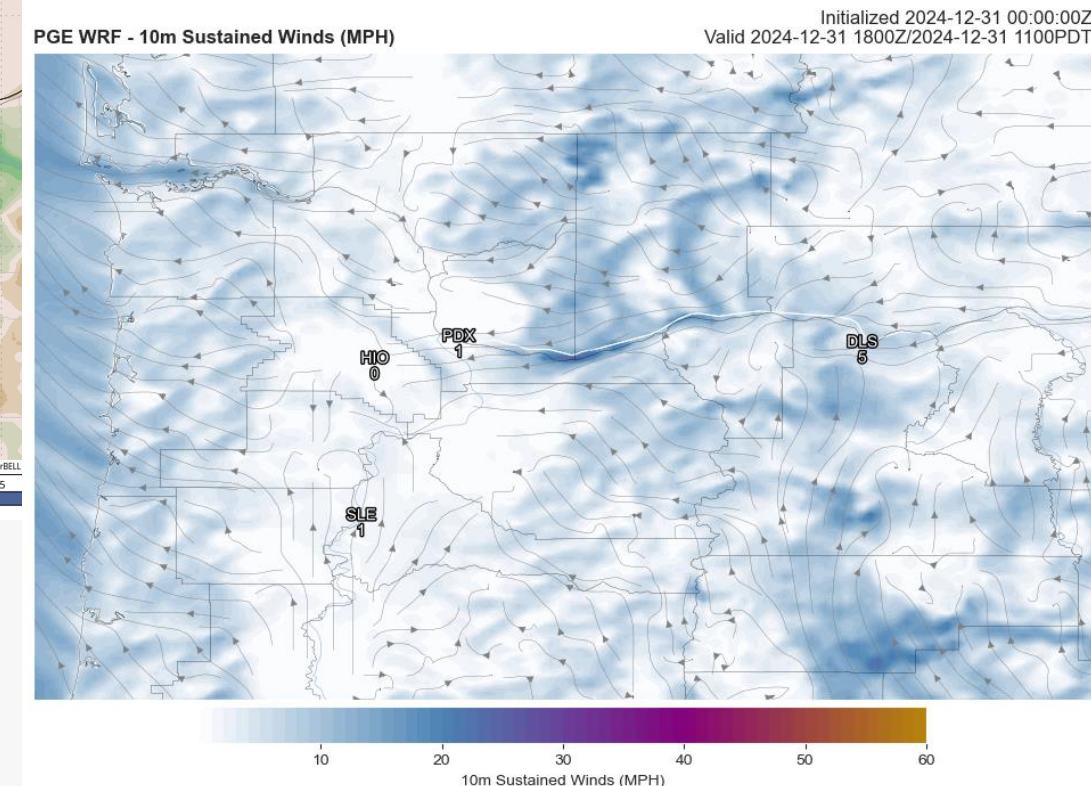


Real-time Observations



Weather Bell

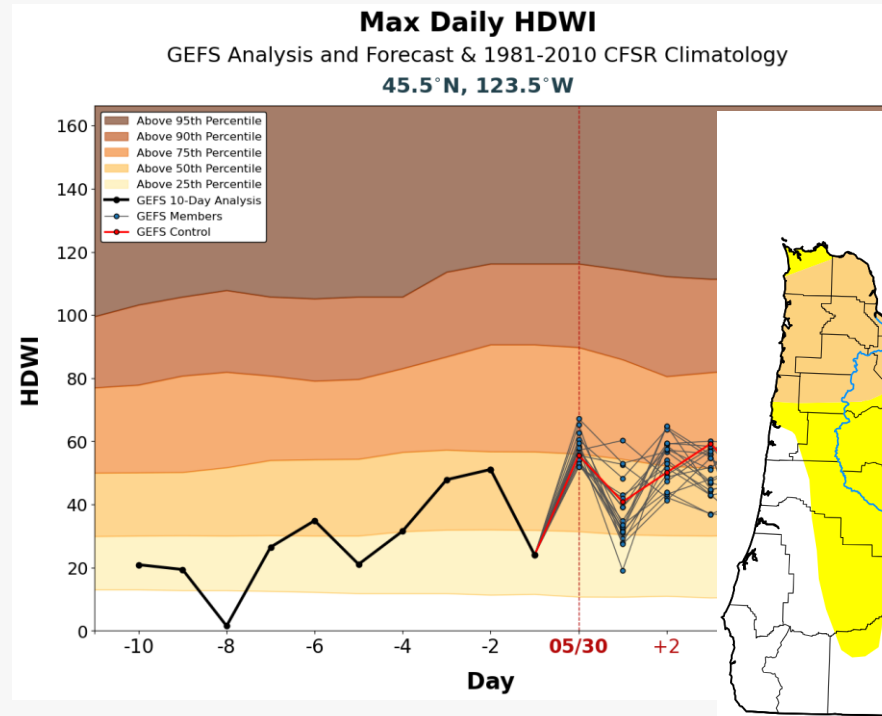
PGE WRF



Sources:

- National Weather Service: weather.gov/wrh/hazards
- WeatherBell Analytics: weatherbell.com/
- PGE Weather Research and Forecast (WRF model)

Fire Weather Assessment: Weather and Drought



Hot-Dry-Windy Index

Sources:

- Hot-Dry-Windy: hdwindex.fs2c.usda.gov/
- Evaporative Drought Demand Index: drought.gov/data-maps-tools/evaporative-demand-drought-index-eddi-subseasonal-forecasts
- U.S. Drought Monitor: droughtmonitor.unl.edu/

U.S. Drought Monitor

Map released: Thurs. May 29, 2025

Data valid: May 27, 2025 at 8 a.m. EDT

Intensity

- None
- D0 (Abnormally Dry)
- D1 (Moderate Drought)
- D2 (Severe Drought)
- D3 (Extreme Drought)

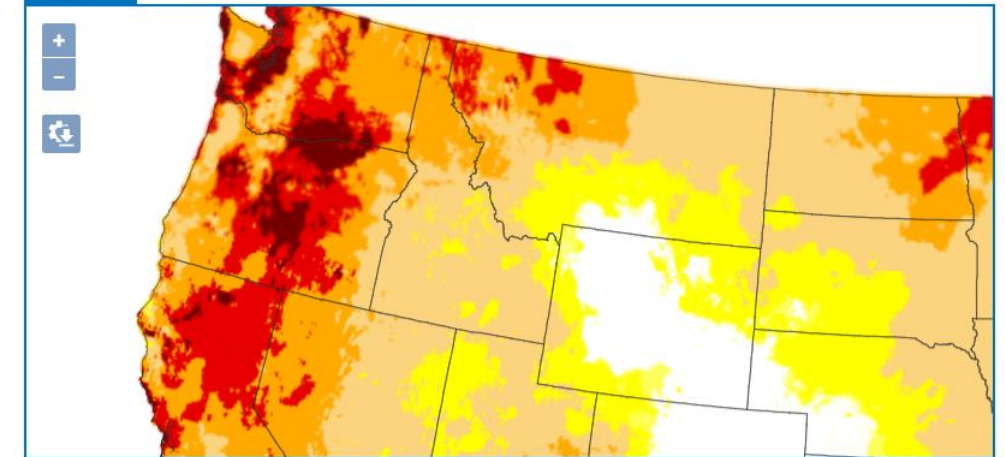
EDDI

INTERACTIVE MAP: EVAPORATIVE DEMAND DROUGHT INDEX (EDDI) FORECASTS

EXPERIMENTAL

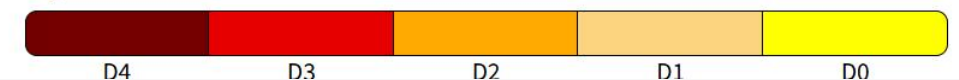
2 Week

4 Week



Legend

Dry Conditions



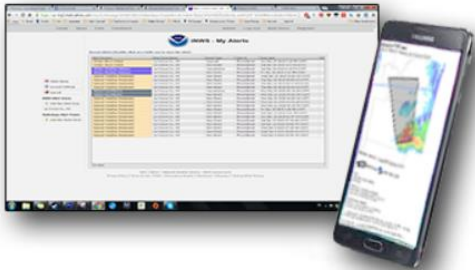
Fire Weather Assessment: National Weather Service



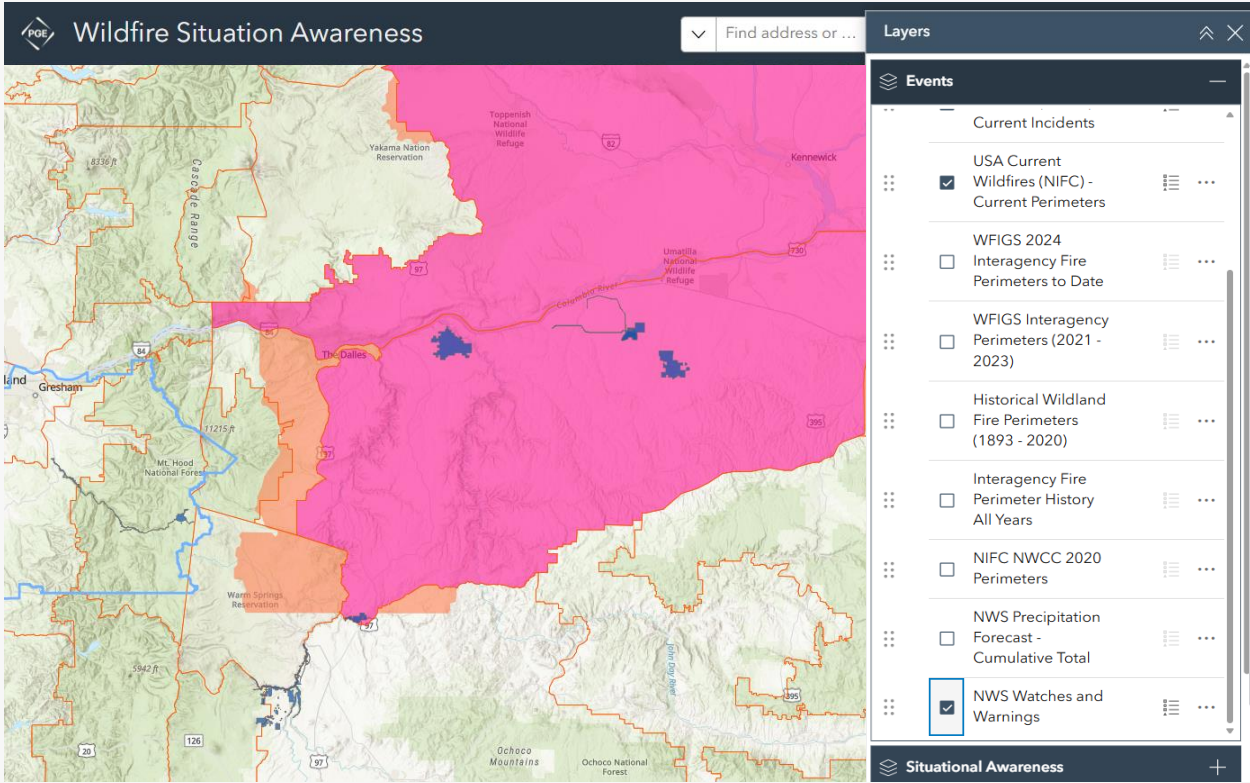
iNWS - Interactive NWS
National Weather Service Mobile Decision Support Services (MDSS)

iNWS MOBILE ALERTING

Receive customized text message and e-mail alerts for National Weather Service products that you care about.



Sources: iNWS: inws.ncep.noaa.gov/



A Red Flag Warning has been issued for Kittitas Valley; Lower Columbia Basin

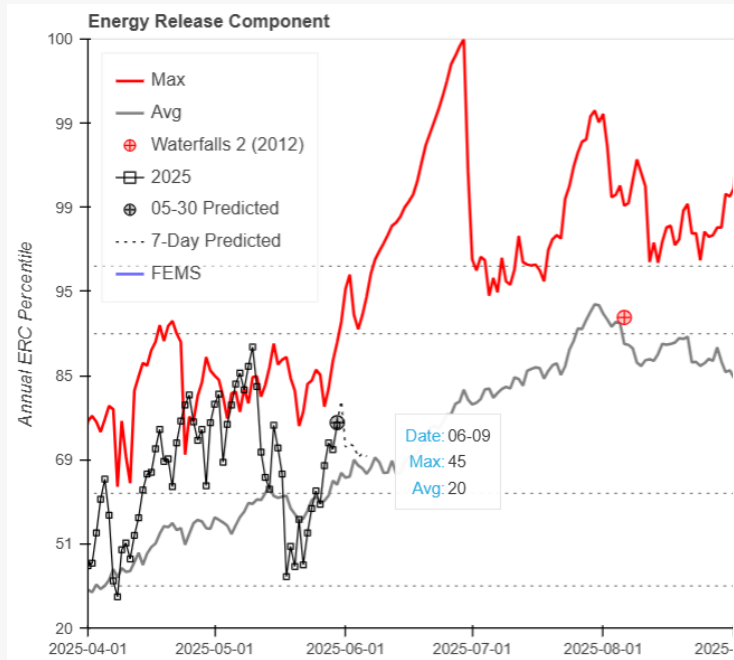
Event Information	
Effective Date/Time	2025-06-09 23:31:00
Expiration Date/Time	2025-06-10 20:00:00
	Kittitas Valley; Lower Columbia

Fuels Conditions Situational Awareness

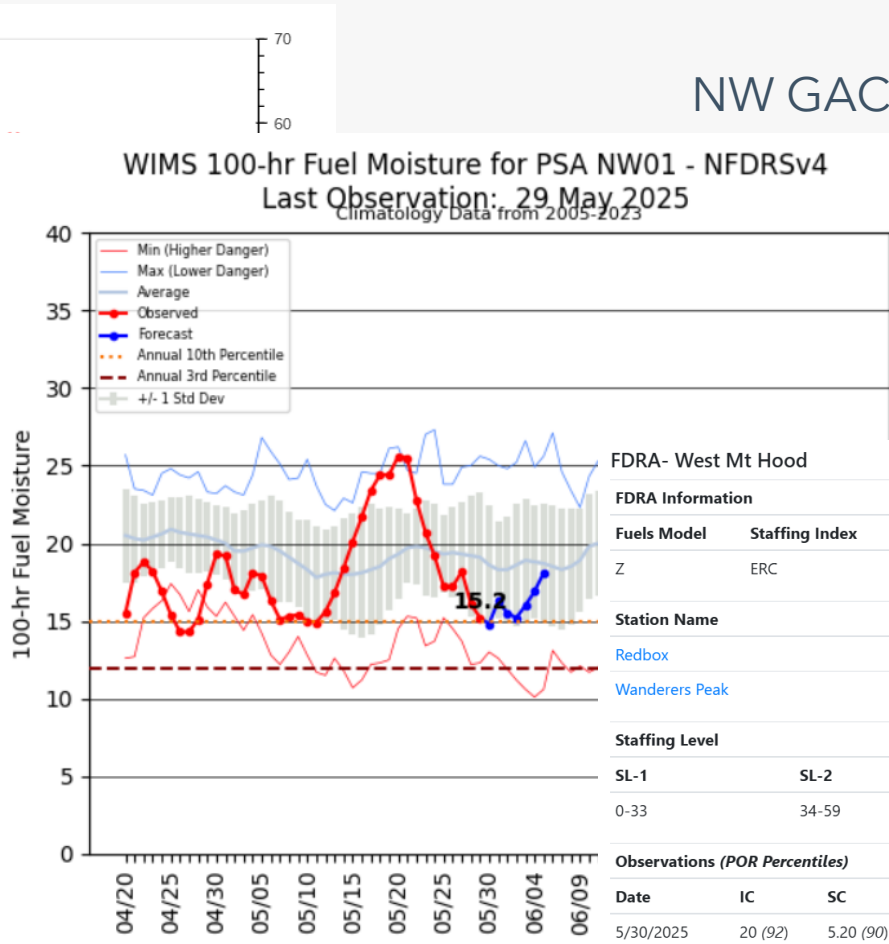
Tracked Data:

1. National Fire Danger Rating System variables
 - Energy Release Component
 - Burn Index
 - Dead Fuel Moisture
 - Live Fuel Moisture
2. Live fuel moisture
3. Severe Fire Danger Index

Fuels Conditions Assessment



ODF



NW GACC

NW GACC

FDRA- West Mt Hood

FDRA Information

Fuels Model	Staffing Index	Fire Weather Zone	Analysis Years	Analysis Period	FDOP
Z	ERC	ORZ688	2009-2023	January 1 - December 31	Northwest Oregon

Station Name	WIMS ID	Station Weight
Redbox	350718	1
Wanderers Peak	350726	1

Staffing Level

SL-1	SL-2	SL-3	SL-4	SL-5
0-33	34-59	60-85	86-104	105+

Observations (POR Percentiles)

Date	IC	SC	1 HR	10 HR	100 HR	1000 HR	ERC	BI	Herb	Woody	SL
5/30/2025	20 (92)	5.20 (90)	7 (10)	13 (20)	16 (24)	19 (35)	57 (79)	41 (87)	155	139	SL2

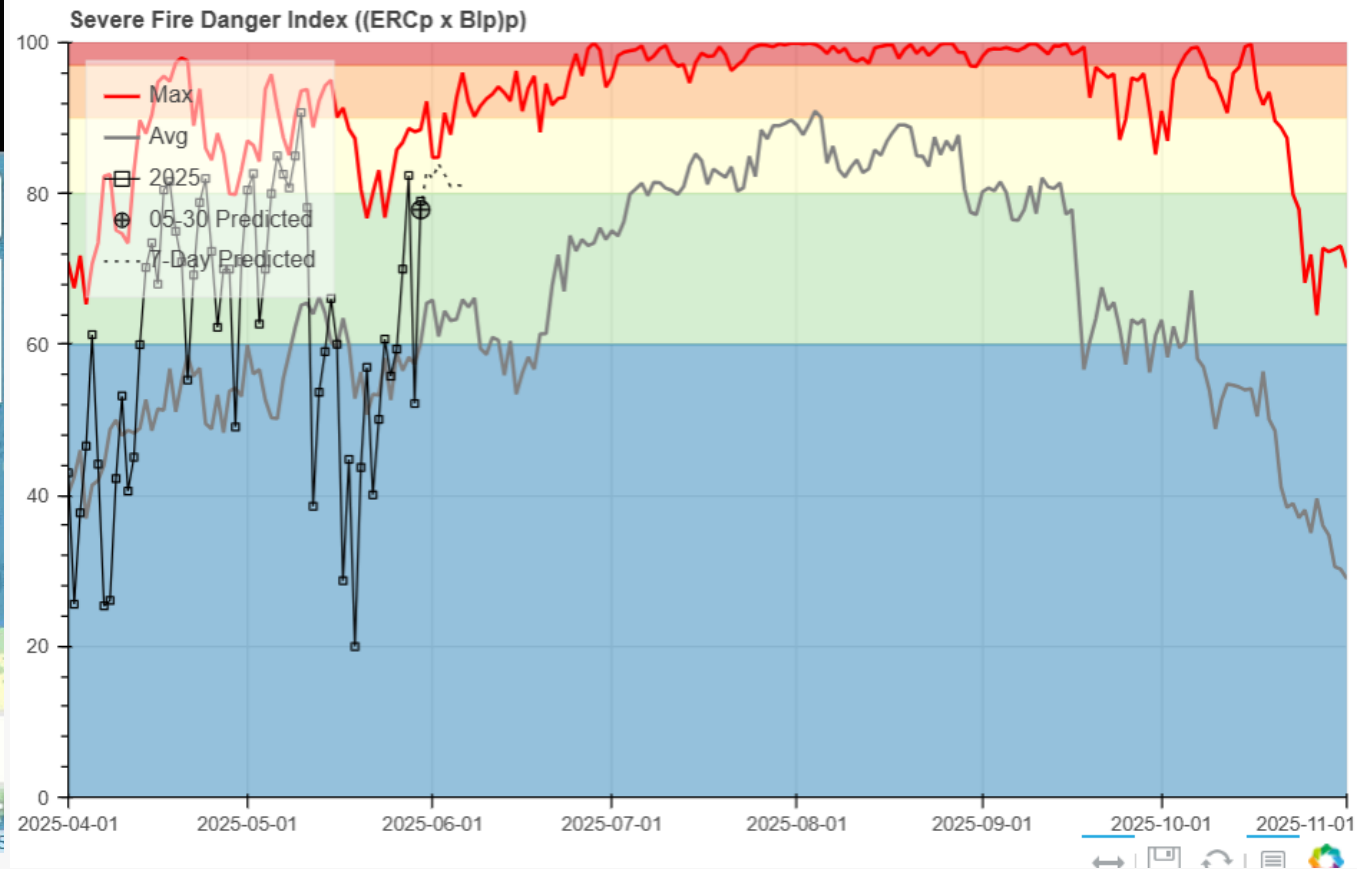
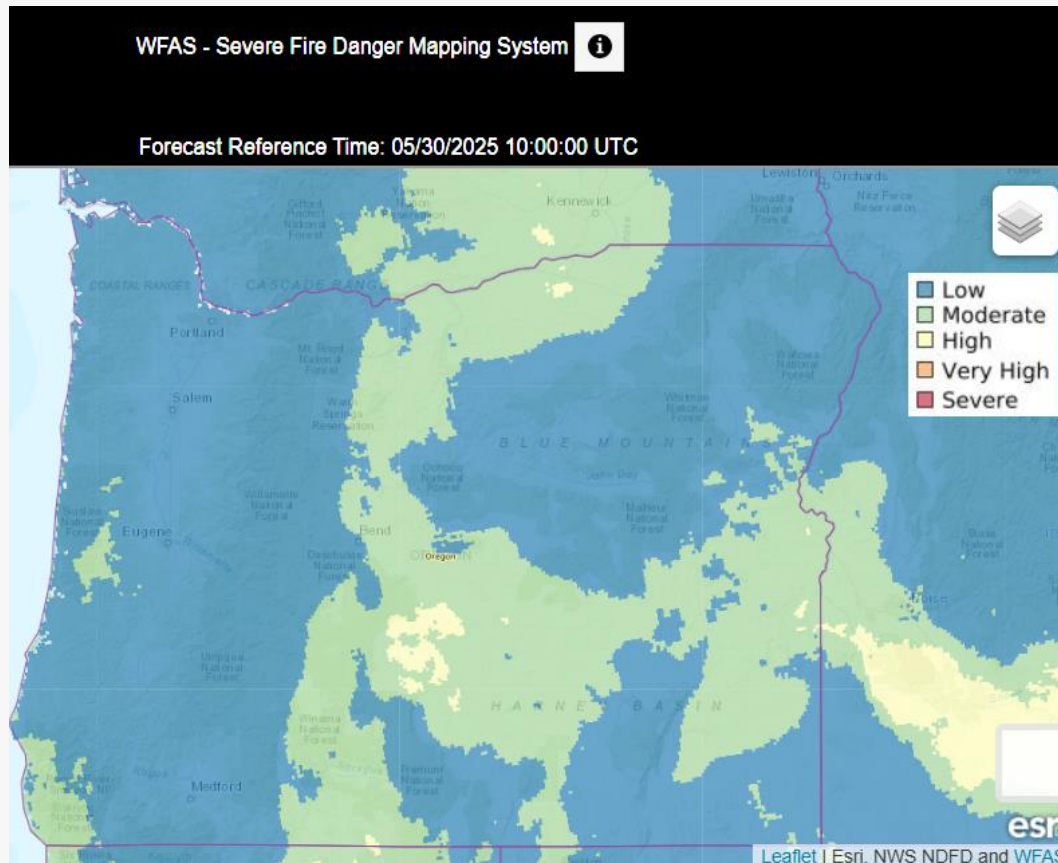
Forecast (POR Percentiles)

Date	IC	SC	1 HR	10 HR	100 HR	1000 HR	ERC	BI	Herb	Woody	SL
5/30/2025	7 (73)	4.65 (80)	12 (31)	16 (31)	15 (19)	19 (35)	46 (72)	34 (72)	154	140	SL2
5/31/2025	14 (86)	10.15 (99)	10 (24)	12 (16)	15 (19)	19 (35)	56 (79)	55 (94)	152	138	SL2

Sources:

- ODF Fuels Charts:
pnwwildfireplanning.pythonanywhere.com/nfdrs/r6map/
- NWCC Fuels Charts:
gacc.nifc.gov/nwcc/application/v1/views/predict/fire_fuel_graphs.php
- NW GACC Fuel Measurements:
<https://gacc.nifc.gov/nwcc/districts/CCCC/nfdrsMap.php>

Fire Weather Assessment: Severe Fire Danger Index



Sources:

- Severe Fire Danger Index (mapped): m.wfas.net/
- Severe Fire Danger Index (charts): pnwwildfireplanning.pythonanywhere.com/nfdrs/ornw/ncaf

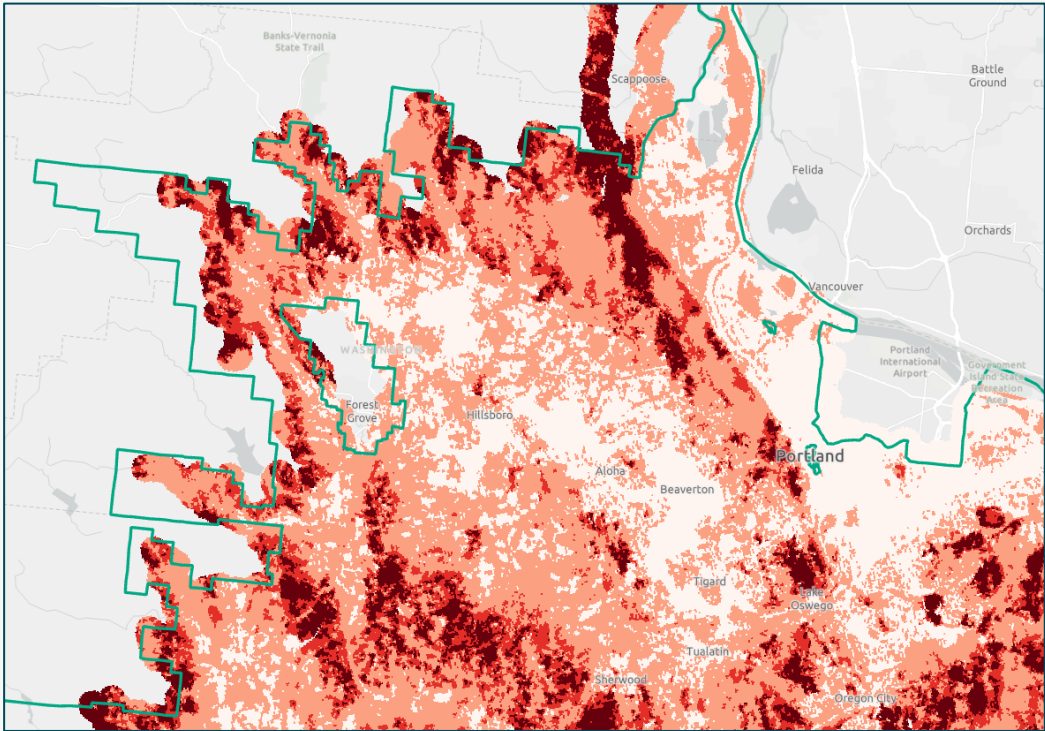
Wildfire Risk Situational Awareness

Tracked Data:

1. Wildfire Threat Index
2. Fire Potential Index

Wildfire Risk: Wildfire Threat Index

WILDFIRE THREAT INDEX COMPONENTS

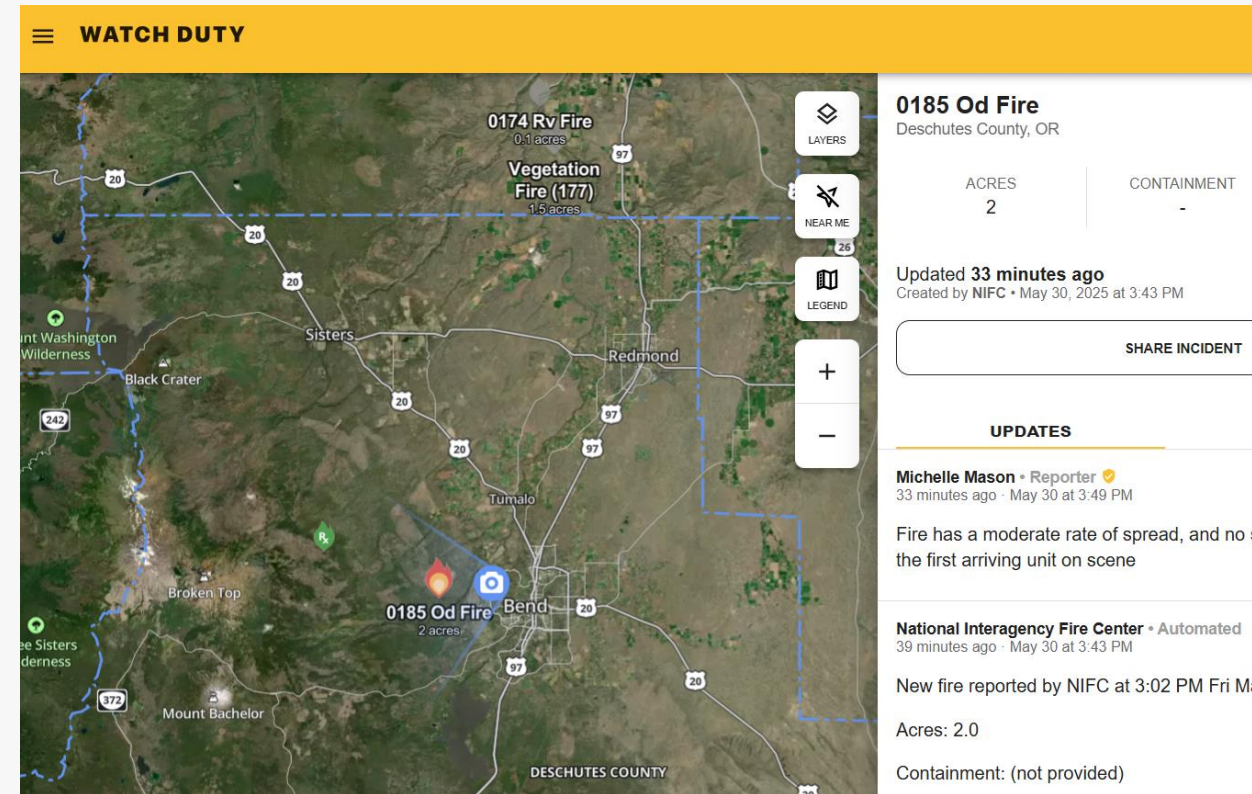
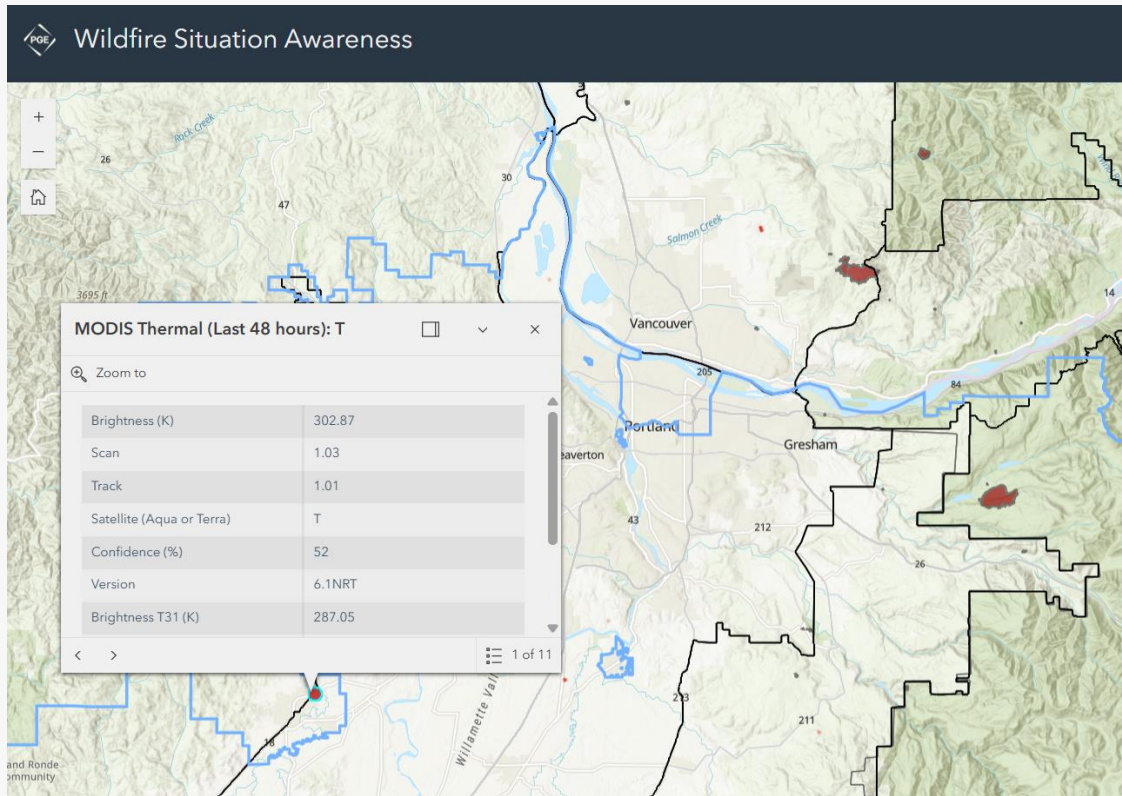


Active Wildfires Situational Awareness

Tracked Data:

1. PGE Wildfire Situational Awareness Dashboard
2. Watch Duty
3. Partner coordination channels

Fire Weather Assessment: Active Wildfires



Data:

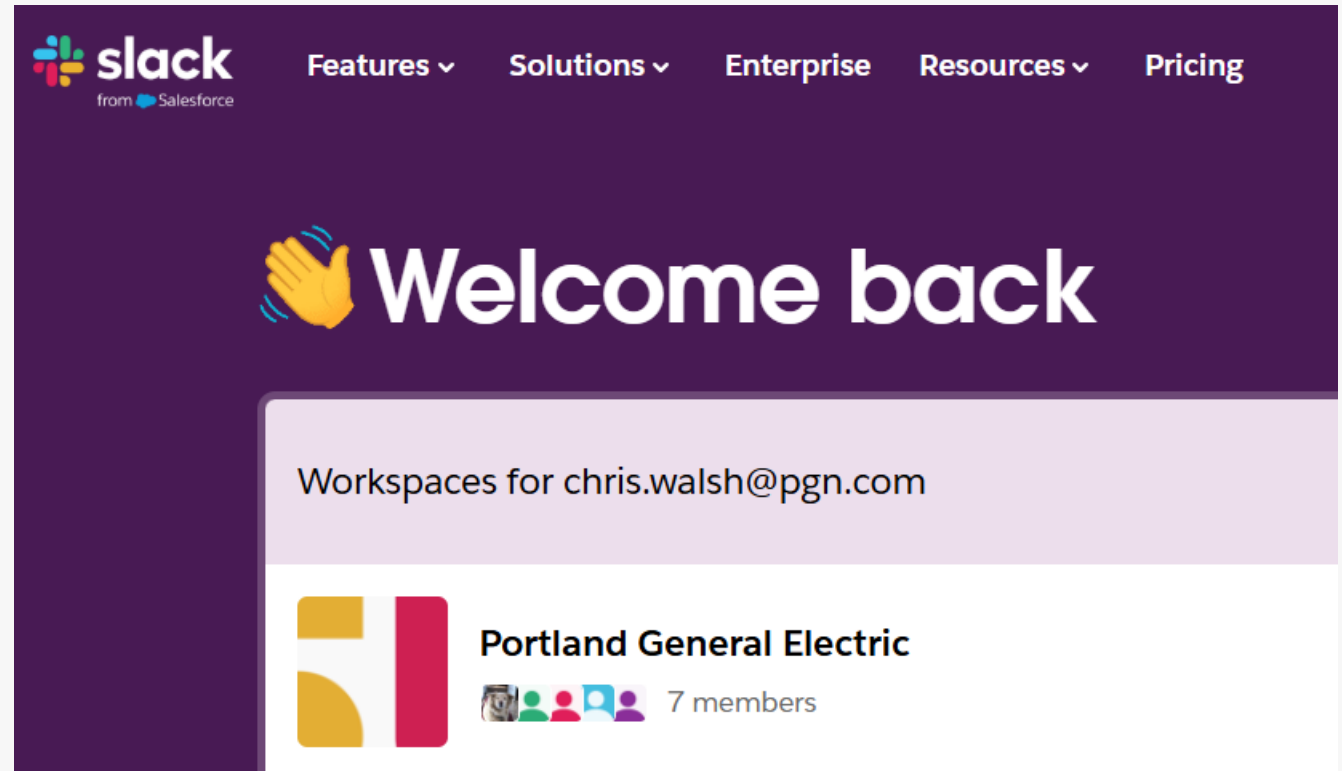
- Satellite hot spot data
- Active wildfire perimeters
- Historical wildfire perimeters

Source: Watch Duty: watchduty.org/

Partner Program Collaboration

Coordination channels:

1. SLACK: National Weather Service Partners, real-time collaboration
2. Teams: Collaboration with utility partners
3. Coordination calls: The NWCC hosts wildfire forecast briefings weekly



Thank you

An

Oreannon
Oreannon
Oreannon
Oreannon
Oreannon
Oregon

kind of energy