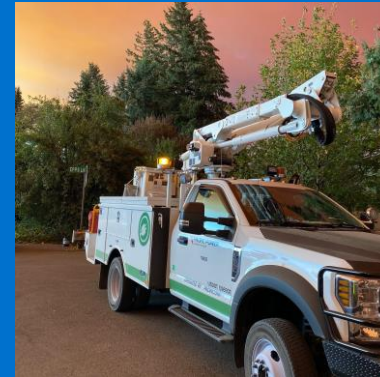


# PACIFICORP

OWEC

June 18, 2025



# Forecasting Process

Analyze Public Data

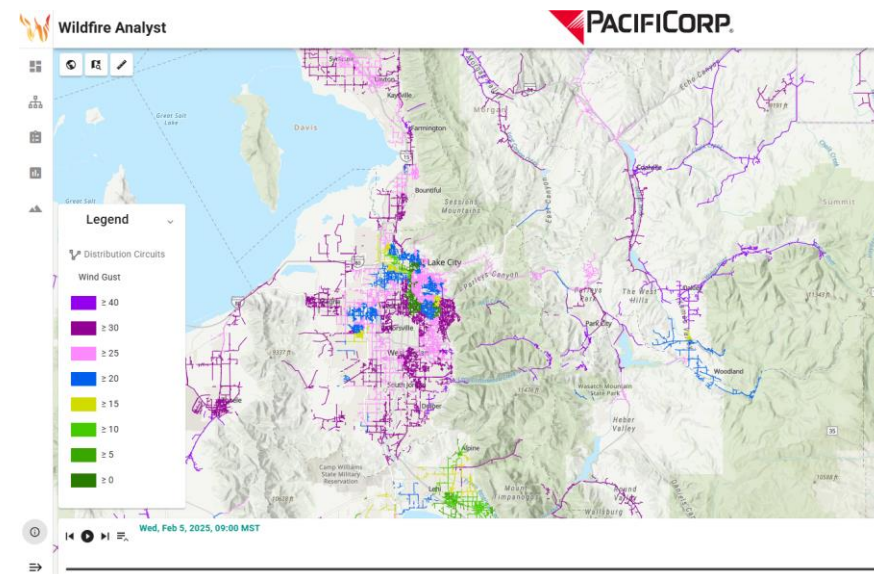
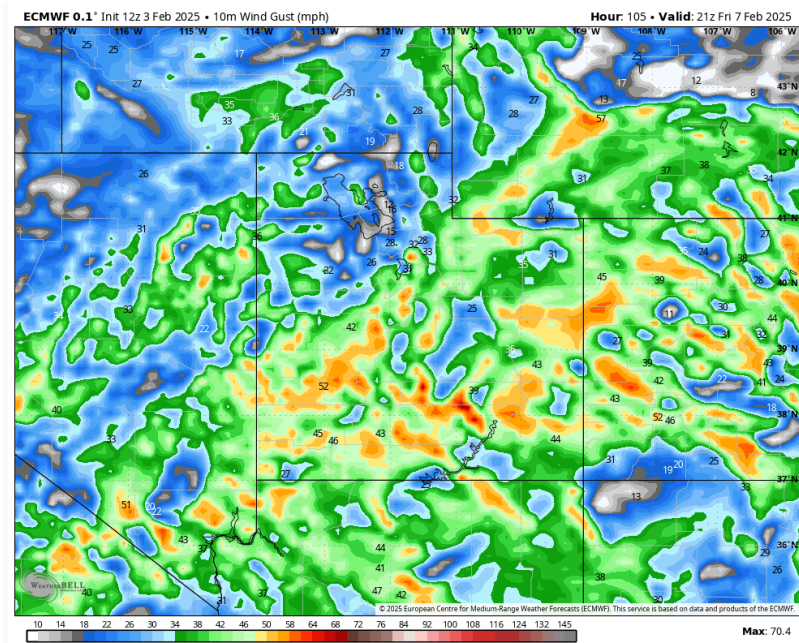
Analyze Weather  
Research Forecast  
Model Data

Review Observation  
Data


Seasonal Fire Risk  
Model

Meteorological  
Interpretation

Generate Forecast



# Daily Impacts Forecast




### KEY TAKEAWAYS

No weather-related outages expected through Saturday.


- Elevated wildfire risk exists in most districts east of the Cascades in the North and Central Wires areas and in some of the inland districts of the South Wires area.
- Warmer and drier weather late in the week may push more areas into the Elevated category.
- Afternoon and evening breezy conditions are expected each day along the coast and east of the Cascades. The strongest winds this week will be the typical daily afternoon and evening westerly gusts in the Hood River and Hermiston areas and W-N winds near the coast. Winds are not expected to approach outage-producing strength.
- A few isolated thunderstorms are possible in the east and south this afternoon and Wednesday afternoon. New lightning ignitions are possible.

### FIRE WEATHER



- ELEVATED Wildfire Risk:**
  - North and Central Wires from the Cascades east, plus the Roseburg district. Portions of the Willamette Valley area will move back into the Elevated category late in the week or over the weekend as drier and warmer weather returns.
  - South Wires areas in Elevated are Grants Pass, Alturas, Medford, Yreka, and portions of the Mt Shasta area. More areas may move into Elevated late in the weekend during hot and dry weather as wind begins to increase.
- LOW Wildfire Risk:**
  - Coastal districts, the Willamette Valley districts, and the Klamath Falls, Lakeview, and Tulelake districts in South Wires have vegetation conditions below our dry thresholds. The coastal districts are also benefiting from onshore winds which are bringing higher relative humidity air.

### WIND



No outages due to wind expected.

- Tuesday-Saturday:** Afternoon and evening breezy conditions are possible across the service territory with SW-NW gusts to 15-25 mph. Westerly gusts in the Hood River and Hermiston districts will reach 25-35 mph each afternoon and evening.
- Coastal Areas:** W-NW gusts to 20-30 mph each afternoon and evening, with a few gusts to 35-40 mph along the immediate coast.

PACIFIC POWER SYSTEM IMPACTS FORECAST MATRIX												
WEATHER-RELATED OUTAGE POTENTIAL (Wx) and WILDFIRE RISK (F)												
		6/16 (Fri)		6/17 (Sat)		6/18 (Sun)		6/19 (Mon)		6/20 (Tue)		
NORTH WIRES		Wx	F	Wx	F	Wx	F	Wx	F	Wx	F	
Clatsop Area	Clatsop											
Enterprise Area	Enterprise											
Hood River Area	Hood River											
Pendleton Area	Hermiston											
	Pendleton											
Portland Area	Portland											
Walla Walla Area	Walla Walla											
Yakima Area	Sunnyside											
	Yakima											
CENTRAL WIRES												
Albany Area	Albany											
	Corvallis											
	Cottage Grove											
	Dallas											
	Junction City											
	Lebanon											
Bend Area	Stayton											
	Bend											
	Madras											
	Prineville											
Coos Bay Area	Coos Bay											
Lincoln City Area	Lincoln City											
Roseburg Area	Roseburg											
SOUTH WIRES												
Crescent City Area	Crescent City											
Grants Pass Area	Grants Pass											
Klamath Falls Area	Alturas											
	Klamath Falls											
	Lakeview											
	Tulelake											
Medford Area	Medford											
Yreka Area	Mt. Shasta											
	Yreka											

#### WEATHER-RELATED OUTAGE POTENTIAL (Wx)

OUTAGE POTENTIAL	
	Widespread Outages with Extended Restoration
	Scattered to Widespread Outages
	Isolated to Scattered Outages
	No System Impacts Expected

#### WEATHER-RELATED HAZARDS

	W - Wind		I - Freezing Rain and Ice
	L - Thunderstorms (Lightning, Hail, Wind)		S - Snow
	F - Flooding		

#### WILDFIRE RISK (F)

	Extreme (Windy & Dry with Gusts ≥ 95th percentile)
	Significant (Windy & Dry OR Hot & Dry with Very Dry Fuels)
	Elevated (Dry Fuels and Dry Weather)
	Low



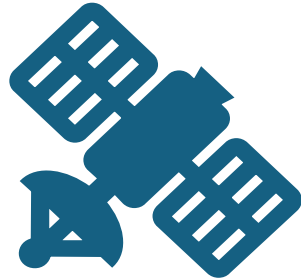
# Publicly Available Meteorology Data

---

- Each of these pieces of information can make a utility well informed of forecasted and observed weather and fire risk across their service territory



Forecast model  
data: WeatherBell,  
Pivotal Weather,  
other public  
providers



Observation Data:  
Real-time weather  
station data,  
satellite data, radar  
data



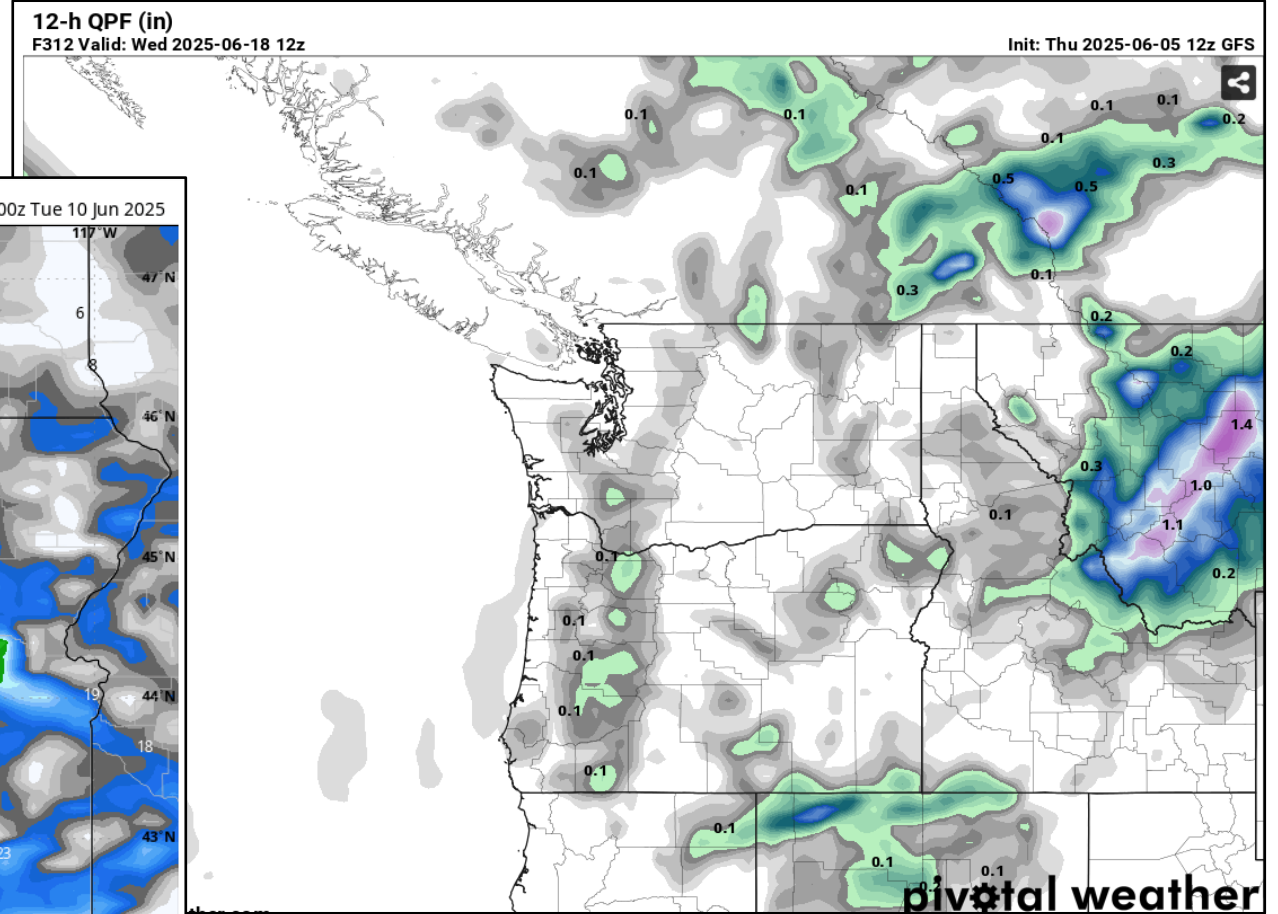
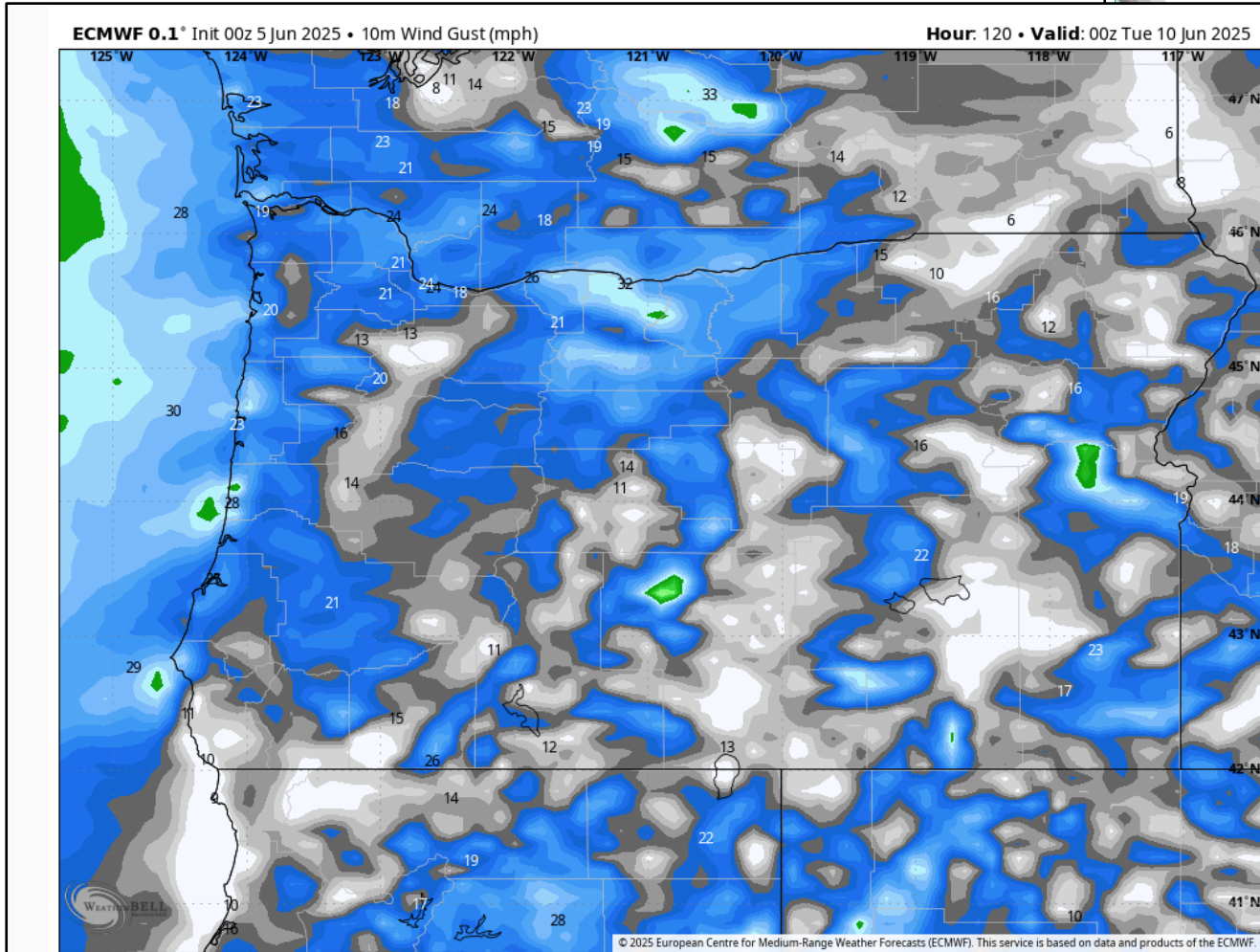
Outlooks and  
Climate data:  
drought monitor,  
seasonal outlooks,  
snowpack  
information



Fire risk data:  
GACC, NIFC,  
National Weather  
Service

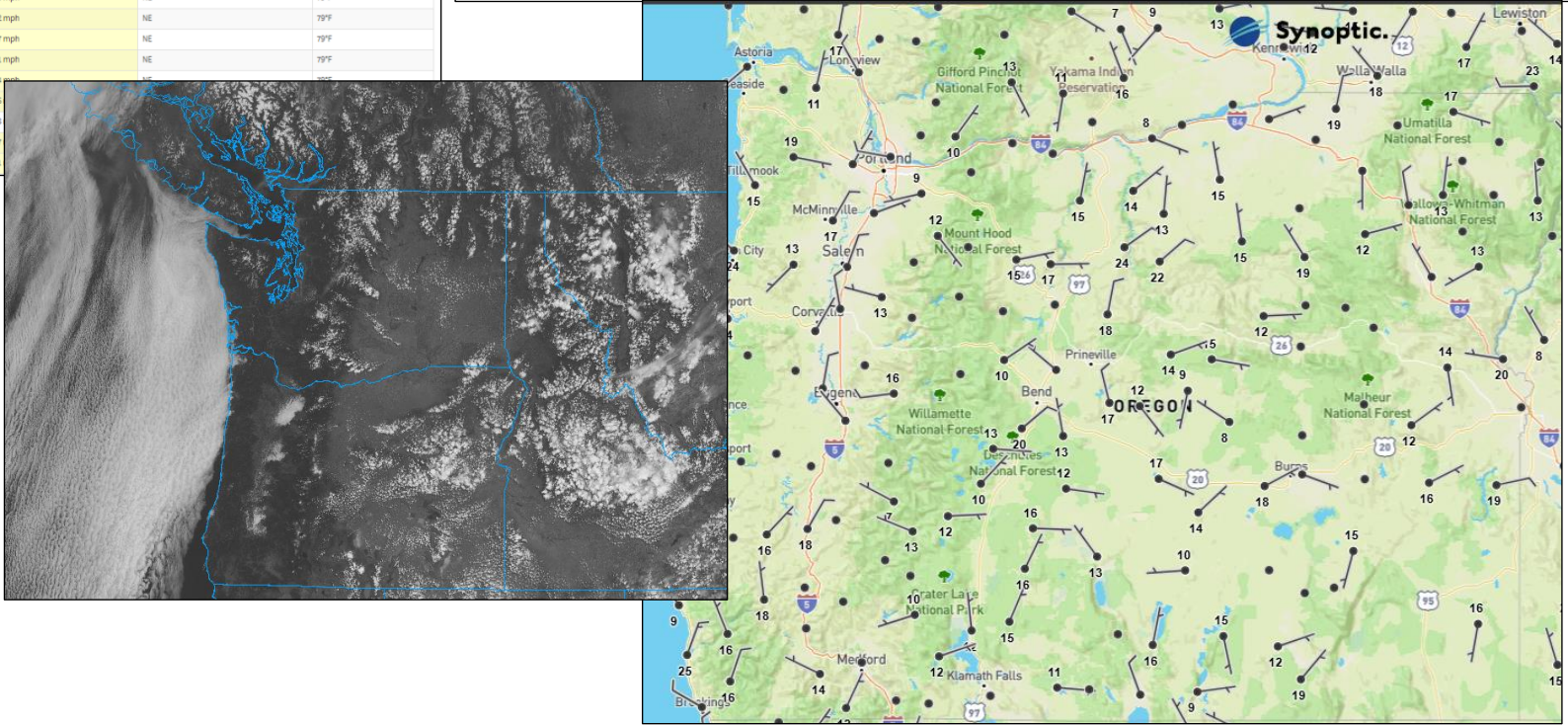
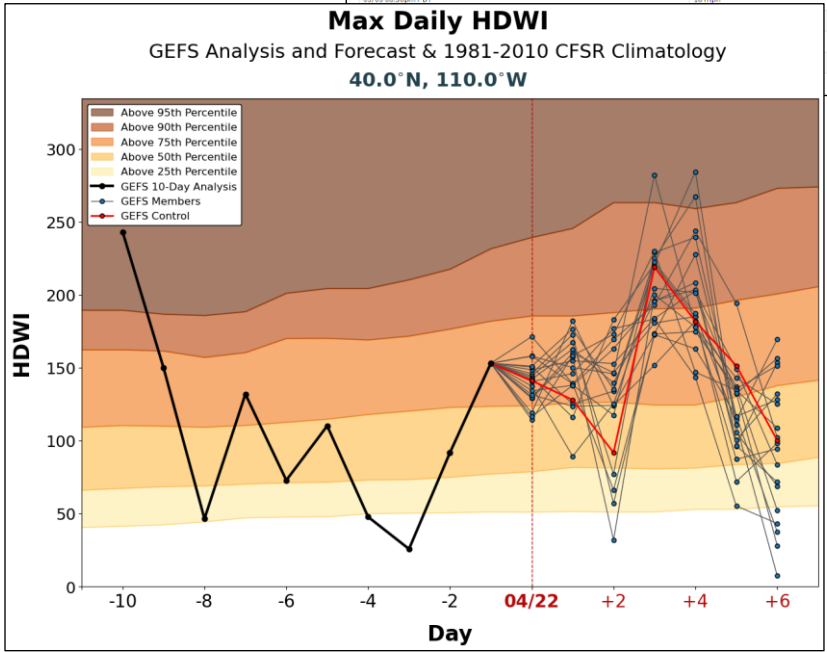
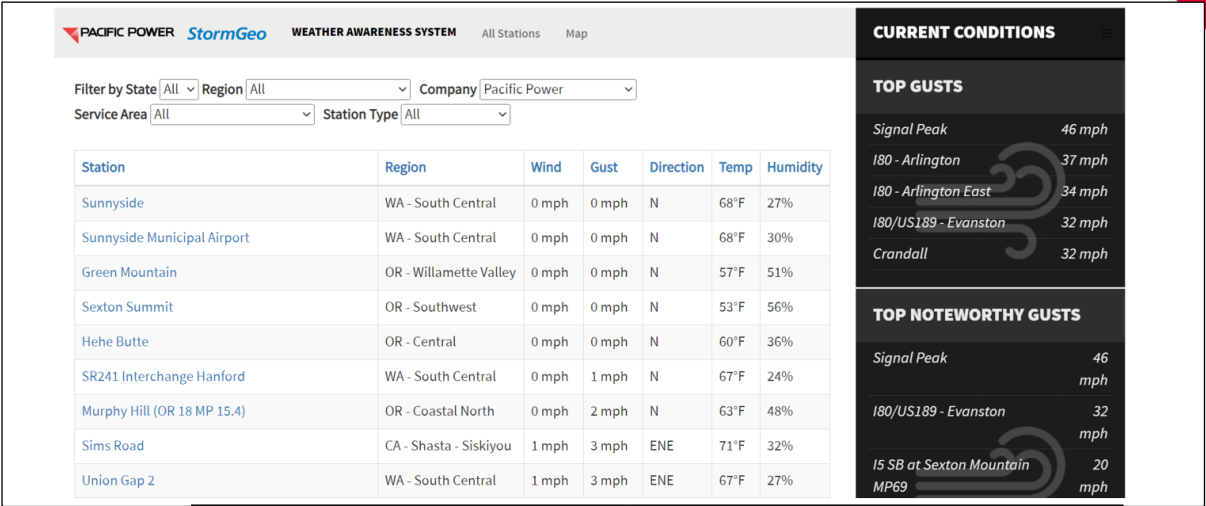
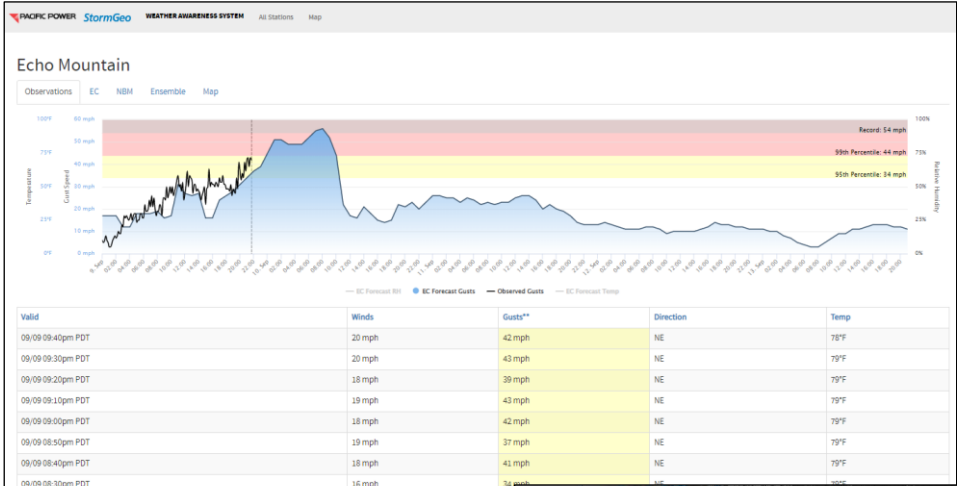
# Forecast model data

- WeatherBell, Pivotal Weather, other providers



# Observation Data

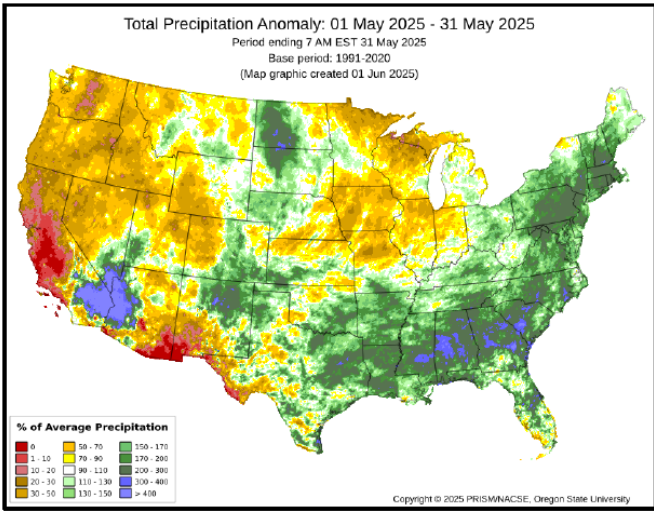
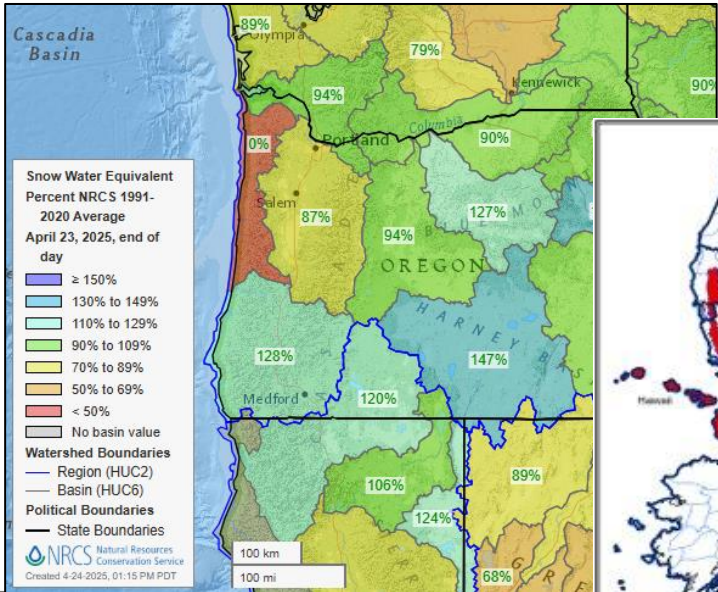
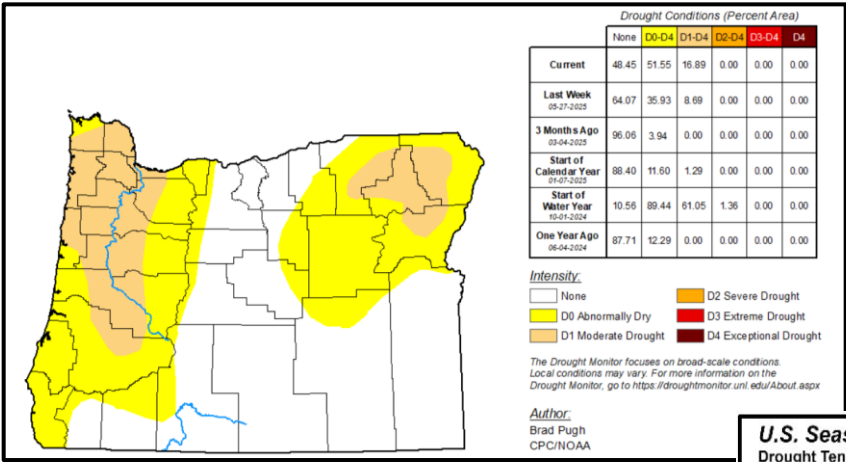
- Real-time weather station data, satellite data, radar data





# Outlook and Climate Data

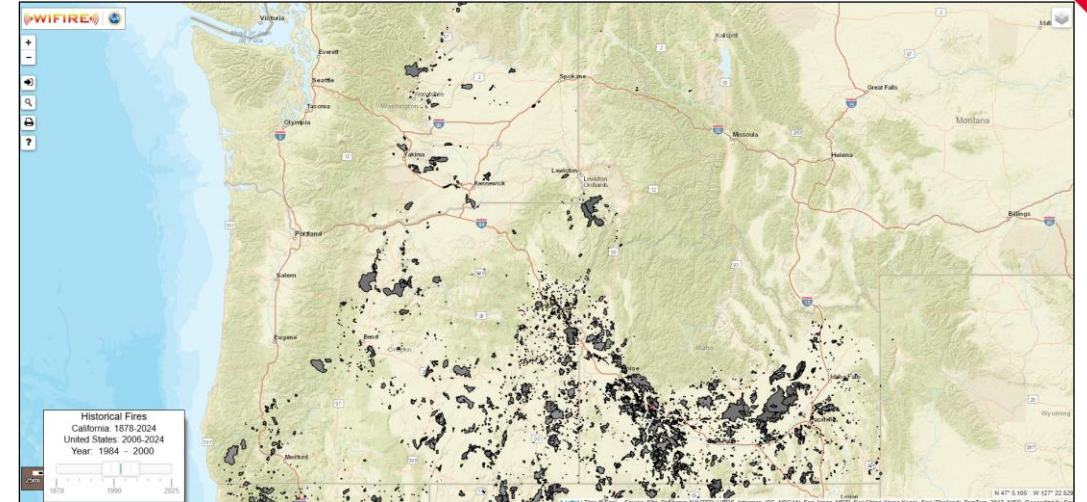
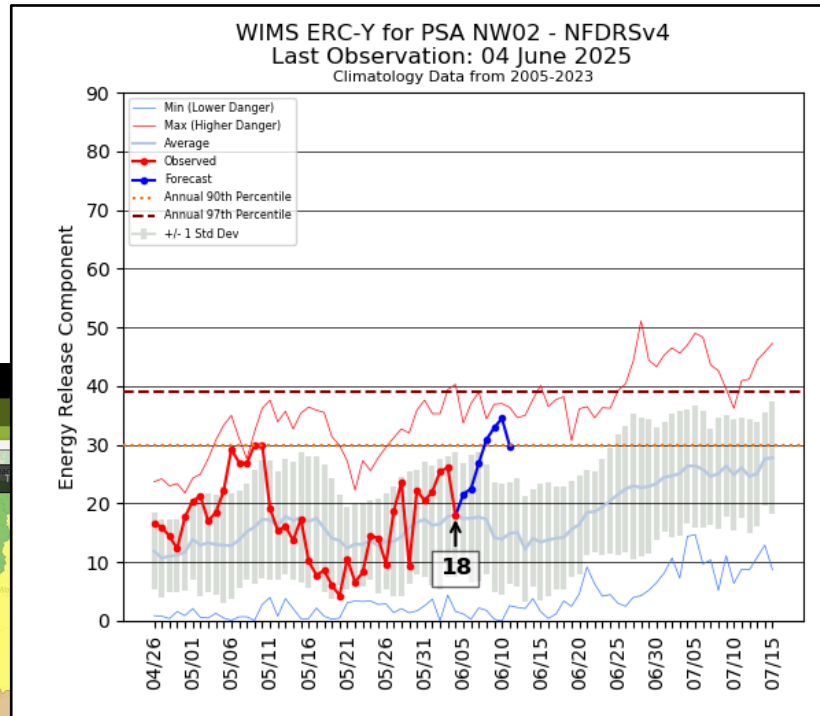
- Drought monitor, seasonal outlooks, snowpack information





# Fire Weather Products

- Fire risk data: GACC, NIFC, National Weather Service, fire history information



Login

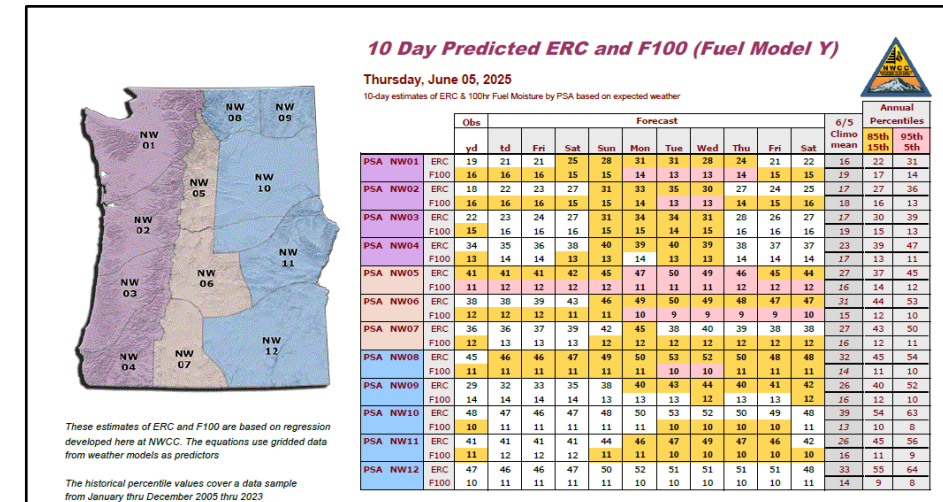
Legend

Significant Fire Potential

- No Data
- Little or no risk.
- Low risk
- Moderate risk

High Risk Triggers

- W
- L
- BEN





# Questions & Comments

---

For more information about our meteorology program, please contact:

**Stephanie Beall**  
Director, Meteorology  
385-515-1232  
[Stephanie.Beall@PacifiCorp.com](mailto:Stephanie.Beall@PacifiCorp.com)

---

**Report a power  
outage**

1-877-508-5088

**Customer  
Service**

1-888-221-7070