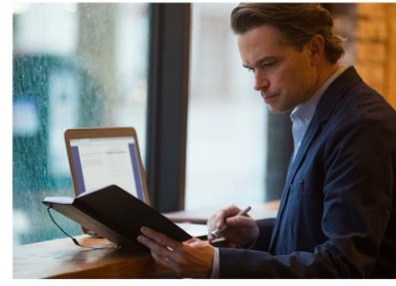


# OWEC

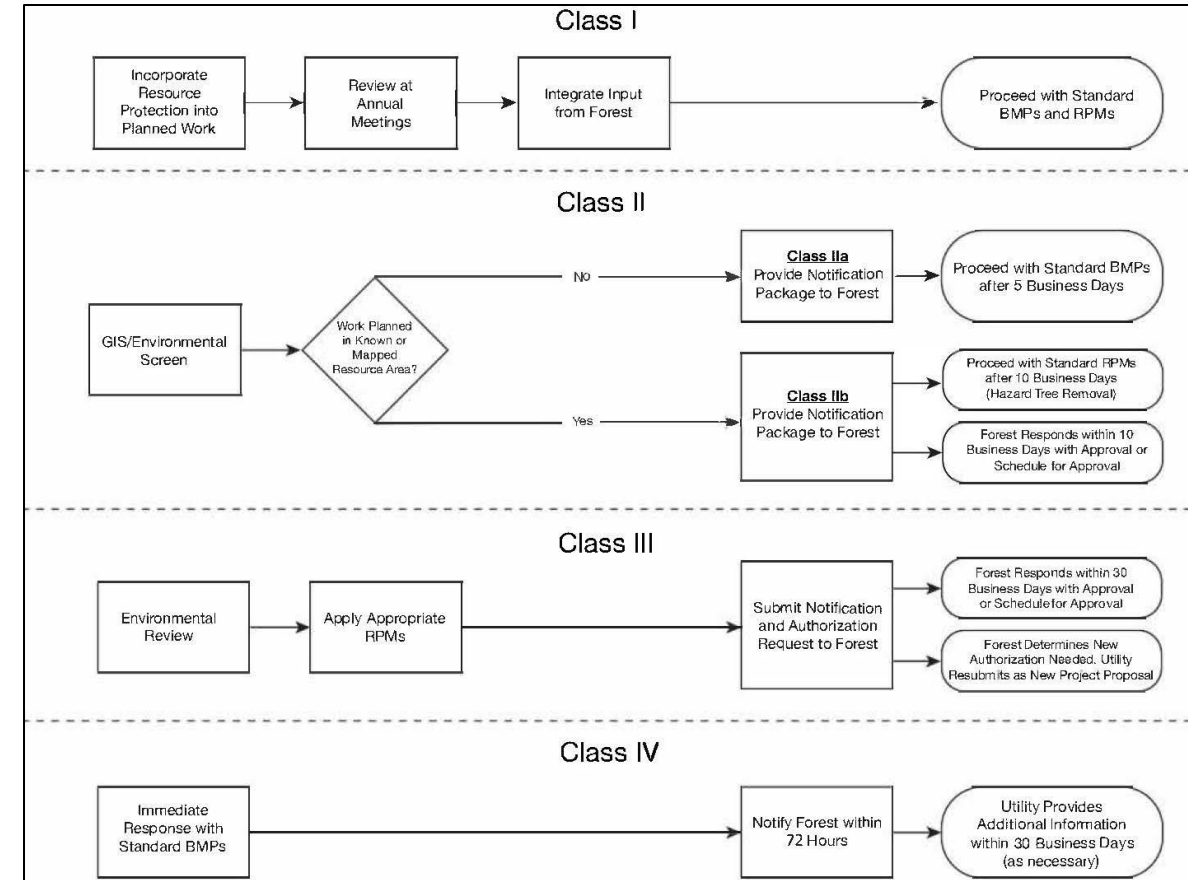
April 2024



# Proactive Activities to Support Vegetation Management Actions

# Operations and Maintenance Plans

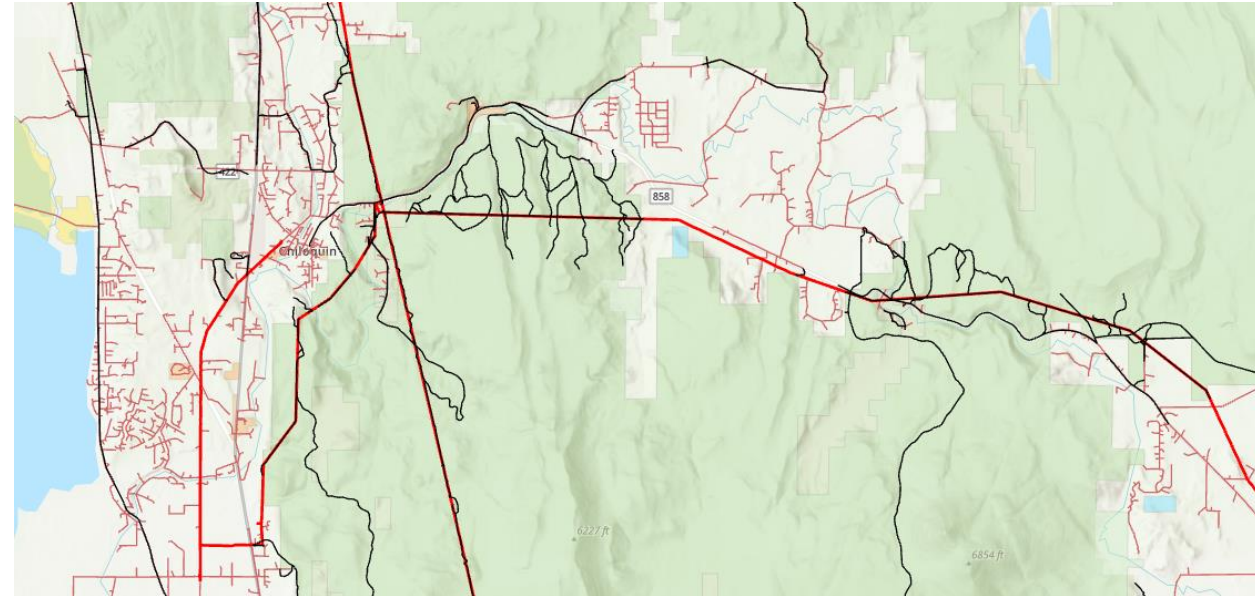
- Consistent with Section 512 of the Federal Land Policy and Management Act of 1976
  - Pacific Power has initiated O&M plan development
- O&M Plan Status in Oregon
  - BLM
    - Plan: 8
    - Complete: 0
  - USFS
    - Plan: 10
    - Complete: 0 (2 forecasted to be complete in 2024)



# Proactive Actions

- **Access Route Mapping**

- Project Scope
  - Review distribution and transmission line access routes on federally managed lands
  - Digitize access routes (GIS)
- Process
  - Review aerial imagery, topo maps, land managing agency access plans, etc.
  - Gather local knowledge from Operations' personnel
  - Digitize access routes
  - Review and revise as needed with local Operations
- Status
  - Have reviewed access routes associated with over 520 miles of transmission and distribution lines in
    - Umpqua NF
    - Fremont-Winema
    - Rogue River-Siskiyou
    - Medford BLM
      - Cascade-Siskiyou National Monument



# Proactive Actions

- **Cultural Resource Surveys**

- Revisiting strategy
  - Literature review
  - May start literature review in 2024 to get ready for field work in 2025
    - Rogue River-Siskiyou, Umpqua, and Fremont-Winema
- Longevity – requirement to make sure that the surveys last a long time
  - Use appropriate method and no significant changes that can impact visibility
- This information has helped us conduct timely assessments of project areas for presence of cultural resources
- Data Sharing Agreements
  - Critical component of the O&M Plans



# Benefits

- Access road information and cultural data has allowed for:
  - Streamlined agency review and approval
  - Resource protection
  - Improved advanced planning

