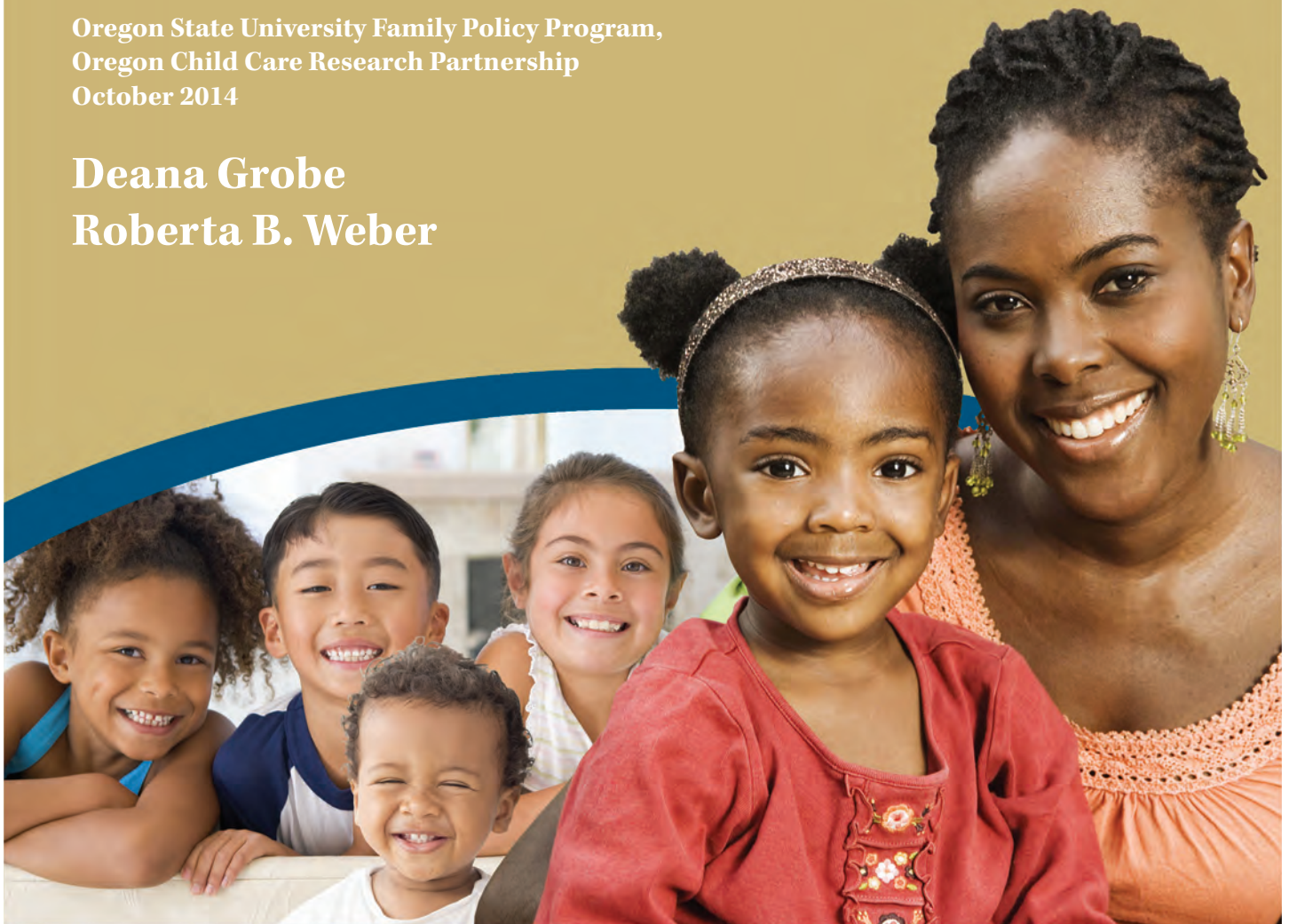


# 2014 Oregon Child Care Market Price Study

Prepared for Oregon Department of Human Services

Oregon State University Family Policy Program,  
Oregon Child Care Research Partnership  
October 2014

Deana Grobe  
Roberta B. Weber



## **Acknowledgments**

The 2014 Child Care Market Price Study has benefited greatly from the guidance and commitment of the steering committee, comprised of Rhonda Prodzinski, Jennifer Irving, Cathy Thomas, and Sonja Svenson. We gratefully acknowledge the members of this committee. We are grateful to the local CCR&Rs for the quality of their work in collecting price and capacity data. We also thank Cathy Thomas at Central Coordination for her assistance in getting us this data.

# Contents

- Executive Summary..... 1
- Introduction ..... 1
- Data..... 2
  - Data Selection ..... 2
    - Study Population*..... 2
    - Data Source*..... 2
    - CCR&R 2014 Database Characteristics*..... 3
  - Data Validity ..... 4
- Methodological Issues ..... 5
  - What is Included in the Data Analysis ..... 5
    - Elimination of Records Without Price Data* ..... 5
    - Elimination of Records Not Meeting the Data Currency Standard* ..... 6
    - Large Home-based Child Care as Distinct Type of Care* ..... 6
    - Part-Time Preschool Program Prices* ..... 6
    - School-age School-year and School-age Summer Prices* ..... 6
    - Converted Prices* ..... 7
  - Price Per Child Care Slots ..... 7
  - Geographically Defined Clusters ..... 7
- Findings ..... 12
  - Year 2014 Statewide Child Care Prices..... 12
  - Year 2014 Geographic Price Clusters ..... 13
    - Comparison of Statewide Prices and Prices in the Clusters* ..... 13
    - Comparison of Child Care Facility Prices and Child Care Slot Prices* ..... 17
  - Comparison of 2014 Market Price Data With Previous Market Price Data ..... 21
- Conclusions ..... 24
- References ..... 25

**Appendices:**

- A** Glossary..... 29
- B** Statewide Prices..... 30
- C** 2014 Cluster Prices..... 33
- D** Median County Prices..... 36
- E** 2014 Clusters for Oregon Cities, Counties, and Zip Codes, Sorted by City ..... 37
- F** 2014 Clusters for Oregon Counties, Cities, and Zip Codes, Sorted by County ..... 47



## Oregon Child Care Market Price Study, 2014

### Executive Summary

Starting with the Family Support Act of 1988, “federal funding requirements have stipulated that child care subsidy rates be informed by market rates.” In 1990 the federal government began a major investment in child care with the passage of the Child Care and Development Block Grant Act. Support of parental choice was a key component of this block grant program that sent new money to states to support child care. Parental choice and state control of policy remained central when the program was expanded in 1996 as a part of welfare reform legislation. At that time, child care funding became known as the Child Care and Development Fund (CCDF).

The present federal regulatory framework for market rate surveys was published in the *Federal Register* in August 1998 (45 CFR Parts 98 and 99). As part of this rule, states are required to conduct a child care market rate survey within two years of the effective date of their currently approved CCDF plan. Although these surveys are described as market *rate* surveys by the federal government, we use the term market *price* survey because the title clearly distinguishes the process of collecting price data from setting maximum payment rates which is done by the state.

The purpose of federal policy in having states conduct a market price survey is to have states establish maximum child care payment rates high enough to enable subsidy families to enter the child care market in a competitive position to find and afford care. A market price survey is a tool to be used by states to collect up-to-date information on what facilities, within given geographic areas, charge parents for various types of child care. This information is then considered during the state budget process when establishing state subsidy rate policies for facilities who serve CCDF eligible families. It should be noted that the federal CCDF Final Rule is for a survey of the prices charged for child care, not a survey of the costs of child care. The costs of child care are the facilities costs to provide care that is often greater than the price charged to parents.

#### **Purpose of the Market Price Study**

The 2014 Oregon Market Price Study identifies child care prices and the geographic distribution of these prices across the state. Prices vary by several factors including the age of the child served, type of care, the local supply and demand for child care, and facilities’ perceptions of the capacity of families to pay for care. The 2014 Oregon Market Price Study examines geographic patterns in the prices charged by facilities by age of child served, type of care, and pricing modes (hourly, monthly, daily, weekly). This study fulfills the federal requirement that the state complete a market price survey every two years.

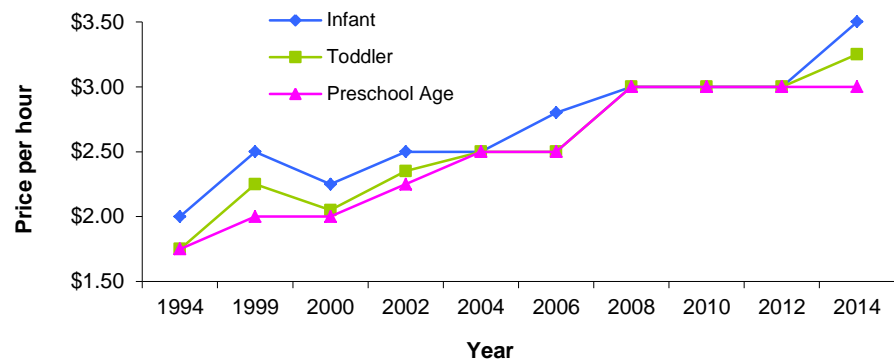
#### **Data Source**

Prior studies were completed in 1990, 1992, 1994, 1999, 2000, 2002, 2004, 2006, 2008, 2010, and 2012. As in past years, data collected through the local Child Care Resource and Referral (CCR&R) were used as the data source. The data were created when local CCR&Rs collected price data from enrolled child care facilities for the price study. CCR&R also use price data to inform parents of facility charges as part of a referral process. In 2014 (as in years other than 1999) the price data from the NACCRRAware database were analyzed. Prices charged by 4,321 facilities from every part of the state are included in the database.

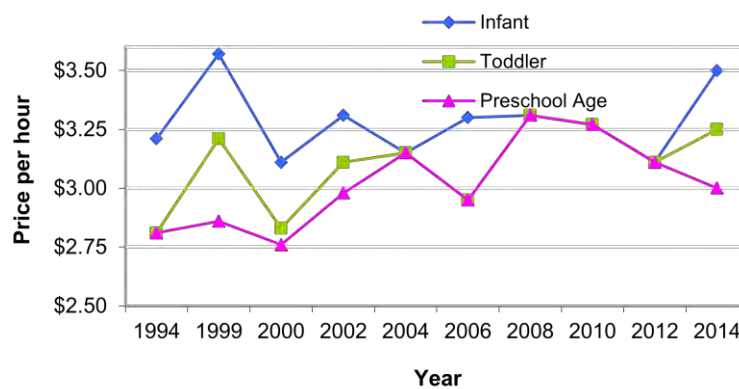
**Findings**

**Between 1994 and 2014 statewide prices increased for most ages and types of care.** In small home-based child care<sup>i</sup> the hourly price of toddler care increased 86% since 1994 while in center care the monthly price increased 121% in the same time period. Large home-based care toddler prices rose 46% from 2000 to 2014. Trends in child care prices are graphed below. Also graphed are the same trends in prices, but adjusted for inflation (second graph for each type of care). The small home-based care graph displaying inflation-adjusted prices shows no consistent pattern in prices up through 2008. The graph actually shows a decline from 2008 to 2012 and then shows an increase in infant and toddler care in 2014. Between 2012 and 2014 prices for preschool age care declined when adjusted for inflation.

**Trends in Small Home-based Child Care Prices (75<sup>th</sup> percentile)**



**Trends in Small Home-based Child Care Prices (75<sup>th</sup> percentile) Adjusted for Inflation (all prices in 2014 dollars)**



**Sources:** Market Price Studies 1994, 1999, 2000, 2002, 2004, 2006, 2008, 2010, 2012, 2014

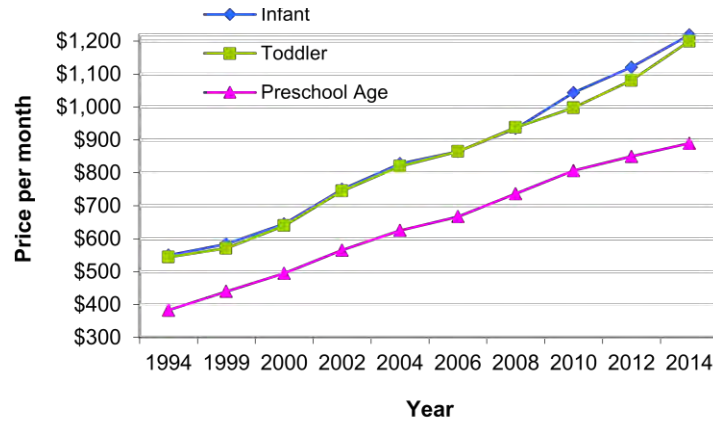
**Notes:** See Table 9 of the full report for prices found in the graphs; The majority of small home-based providers charge by the hour.

<sup>i</sup> Home-based child care providers are typically identified by their regulatory status: a) small home-based providers are known as registered family child care and b) large home-based providers are known as certified family child care. We use the terms small and large home-based care rather than the regulatory titles throughout this report.

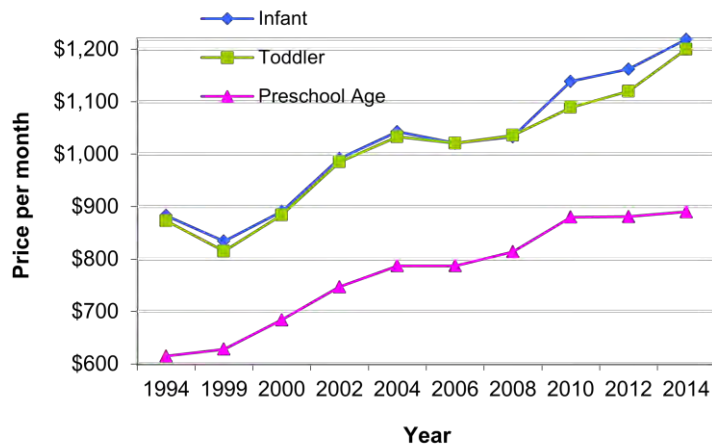
**Findings  
(continued)**

For center care, however, prices increased faster than inflation between 1999 and 2004. For the most part prices kept pace with inflation from 2004 through 2008 and then, increased faster than inflation between 2008 and 2014 especially for infant and toddler care.

**Trends in Center Child Care Prices (75<sup>th</sup> percentile)**



**Trends in Center Child Care Prices (75<sup>th</sup> percentile)  
Adjusted for Inflation (all prices in 2014 dollars)**



**Sources:** Market Price Studies 1994, 1999, 2000, 2002, 2004, 2006, 2008, 2010, 2012, 2014

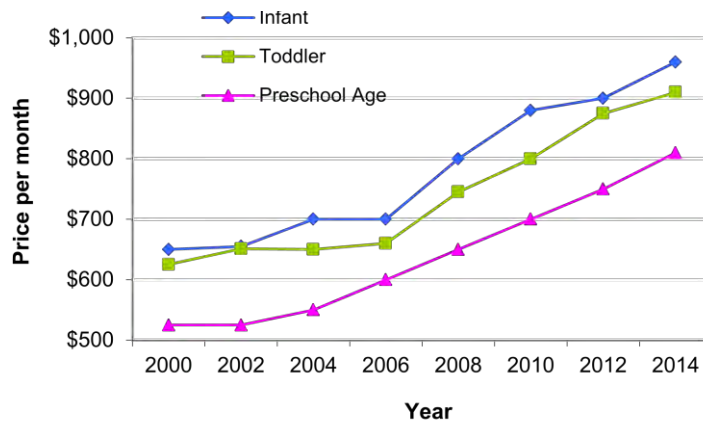
**Note:** See Table 9 of the full report for prices found in the graphs.

**Note:** The majority of centers charge by the month.

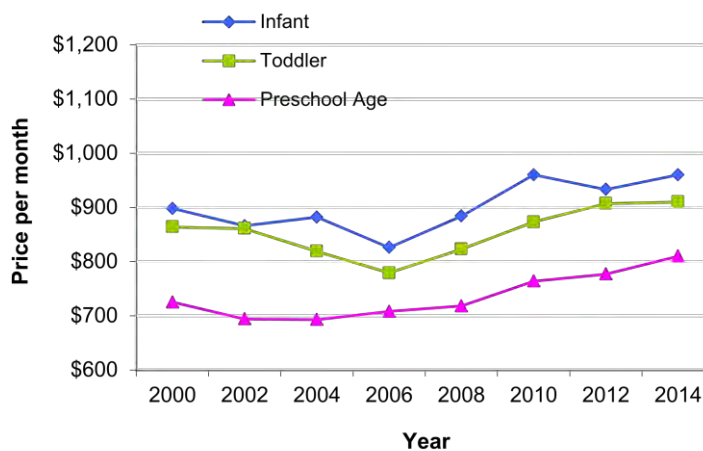
**Findings  
(continued)**

Large home-based care prices have been separated from those of small home-based child care since 2000. After adjusting for inflation prices remained fairly stable from 2000 through 2006, followed by a slight increase in prices from 2006 to 2014 for all age groups.

**Trends in Large Home-based Child Care Prices (75<sup>th</sup> percentile)**



**Trends in Large Home-based Child Care Prices (75<sup>th</sup> percentile)  
Adjusted for Inflation (all prices in 2014 dollars)**



**Sources:** Market Price Studies 2000, 2002, 2004, 2006, 2008, 2010, 2012, 2014

**Note:** See Table 9 of the full report for prices found in the graphs.

**Note:** The majority of large home-based providers charge by the month.



**Findings  
(continued)**

***Child care markets are local with variation among communities.*** When prices were analyzed by zip codes across Oregon, patterns around the state appeared. Urban areas and communities with large universities have higher prices than do more rural communities in the state. The market study validates the existence of three different (1-3) small home-based care price clusters and four different (1-4) center and large home-based child care markets or price clusters in Oregon. Higher number clusters represent zip codes with higher prices and vice versa for lower cluster numbers. The clusters were determined by using a statistical method that looks for groups or clusters that occur in the price data and provides a systematic way to find the optimal natural breaks between groups. The maps of 2014 clusters graphically depict how the prices vary across the state (See Geographic Clusters of Child Care Price Maps at the end of this section). These clusters by type of care capture distinct sets of prices regardless of age of child served.

**Conclusions**

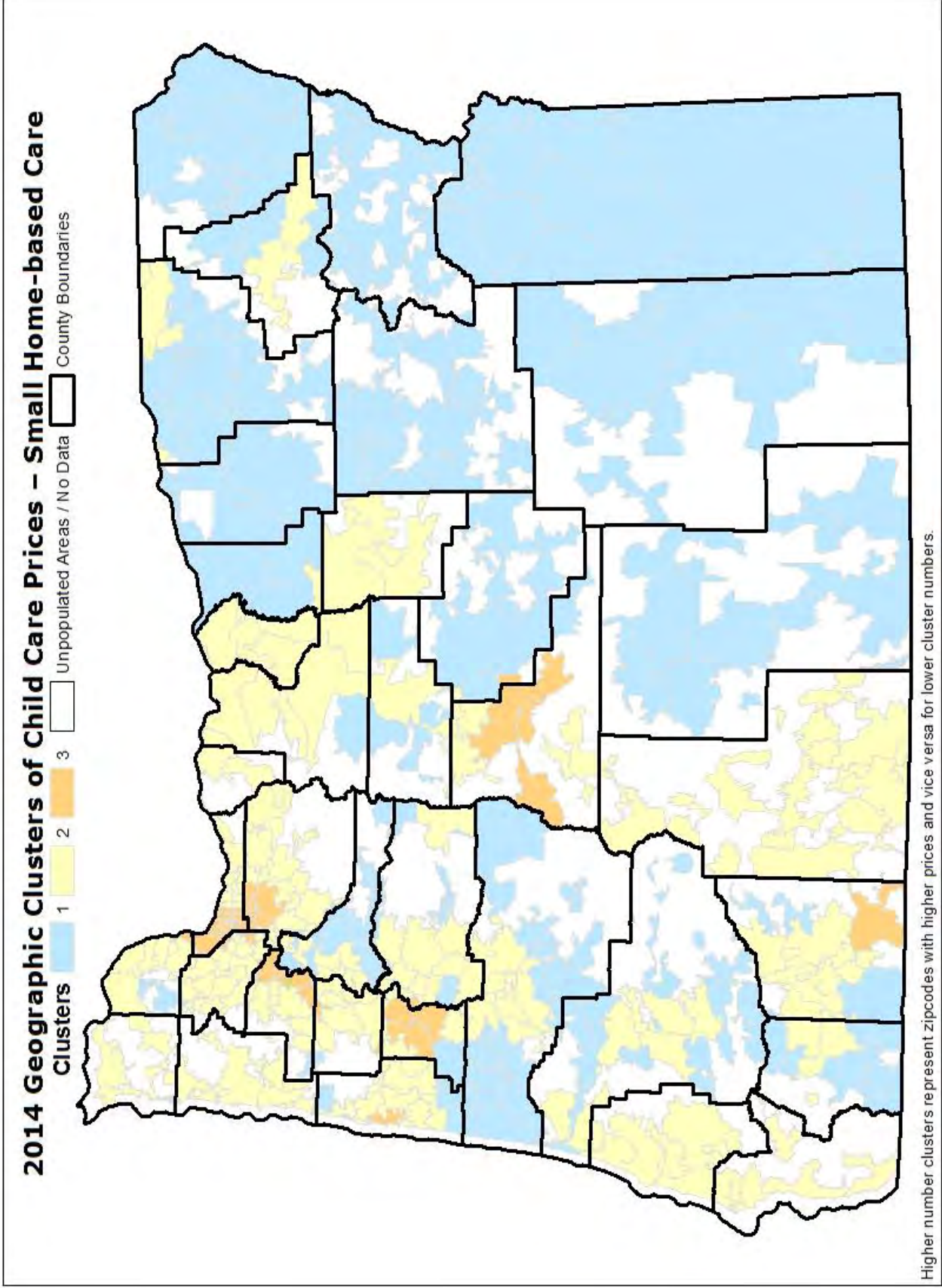
***Child care prices vary across the state, with three types of markets for small home-based care and four types of markets for centers and large home-based care.***

***CCR&R data continues to provide a reliable and cost-effective source of data for statewide market price studies.***

***Prices should continue to be reported for both child care facilities and slots. Analysis should be based on slots since this most accurately represents what families experience when purchasing care.***

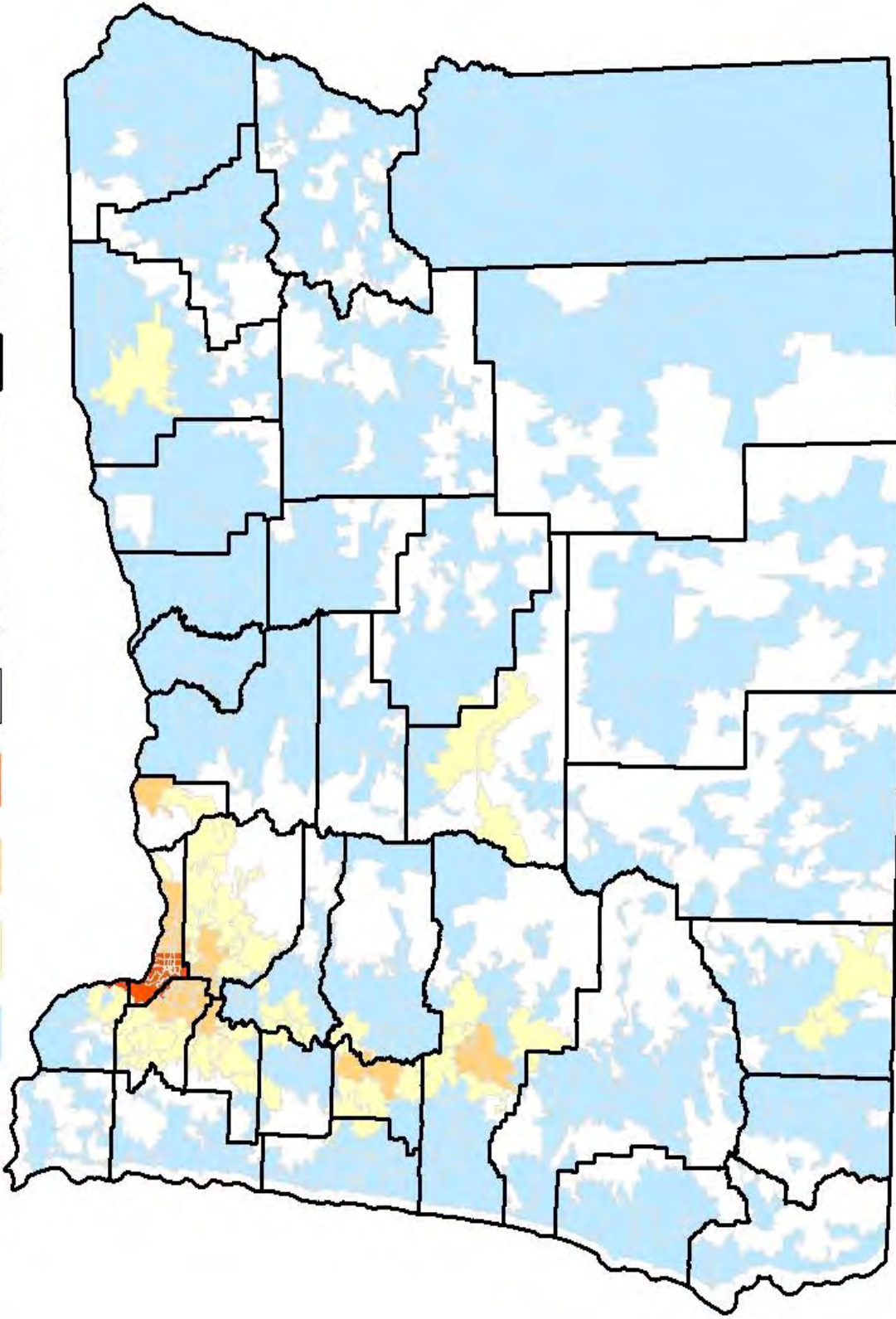
***CCR&Rs should continue to collect price information in the mode(s) that reflect how facilities charge.***

***Analysis of the predominant mode (hourly, daily, weekly, monthly) used by facilities to charge parents identified hourly as the most common mode for small home-based care and monthly for center and large home-based care.***



### 2014 Geographic Clusters of Child Care Prices – Center and Large Home-based Care

Clusters 1 2 3 4 Unpopulated Areas / No Data County Boundaries



Higher number clusters represent zipcodes with higher prices and vice versa for lower cluster numbers.



## Introduction

Starting with the Family Support Act of 1988, federal funding requirements have stipulated that child care subsidy rates be informed by market rates.<sup>ii</sup> In 1990 the federal government began a major investment in child care with the passage of the Child Care and Development Block Grant Act of 1990 (42 U.S.C. 9858 et seq). Support of parental choice was a key component of this block grant program that sent new money to states to support child care. Parental choice and state control of policy remained central when the program was expanded in 1996 as a part of welfare reform legislation. At that time, child care funding became known as the Child Care and Development Fund (CCDF). CCDF operates as a block grant to States, Tribes, and Territories. Working within federal rules States control the major policy levers for CCDF whose funding involves a mix of federal and state dollars.

The present federal regulatory framework for market price surveys can be found in the CCDF Final Rule. This rule was made public in the Federal Register in August 1998 (45 CFR Parts 98 and 99). As part of this rule, states are required to conduct a child care market price survey every two years.

The purpose of a market price survey is to establish maximum child care payment rates high enough to enable subsidy families to enter the child care market to find and afford care. A market price survey is a tool used by states to collect up-to-date information on what facilities, within given geographic areas, charge parents for various types of child care. This information is then considered during the state budget process when establishing state subsidy rate policies for providers who serve CCDF eligible families. It should be noted that the federal CCDF Final Rule is for a survey of the prices charged for child care, not a survey of the cost of child care. The costs of child care are the facilities costs to provide care that is often greater than the price charged to parents.

In Oregon, the Department of Human Services (DHS) oversees the market price survey and recommends a budget for establishing subsidy policies. As authorized by the 2007 Oregon Legislature, DHS implemented a significant policy change by increasing maximum subsidy rates to the 75<sup>th</sup> percentile of 2006 prices for most licensed facilities and authorized a copay reduction of 24% for parents. This policy change went into effect on October 2007. Effective October 2013, DHS increased maximum subsidy rates to the 75<sup>th</sup> percentile of the 2012 Child Care Market Price Study for registered and certified family child care providers. In addition, the infant age was redefined to better align with the Early Learning Division's licensing requirements. Previously the cutoff between infant and toddler care categories for licensed care was set at 18 months. The new cutoff is set at 24 months for all licensed providers. In November 2013, maximum subsidy rates for licensed centers were also increased to the 75<sup>th</sup> percentile of the 2012 Child Care Market Price Study.

DHS has undertaken market price studies in 1990, 1992, 1994, 1999, 2000, 2002, 2004, 2006, 2008, 2010, and 2012 furthering our knowledge of how the child care market operates.<sup>iii</sup> The objectives of the year 2014 market price study were to: (a) identify current prices charged for child care (i.e., current market prices), and (b) identify the geographic distribution of current child care market prices across the state. A steering committee was formed to design and implement the study. This report further details the data and methodology, reports on the 2014 market price analysis, and identifies geographic price areas.

---

<sup>ii</sup> Throughout this report, the term “market prices” or “price” is used to describe prices that are set in the open market by child care facilities. This is distinguished from the *rate of payment* established by DHS for reimbursing child care facilities.

<sup>iii</sup> Ref. 1-11

## Data

### DATA SELECTION

---

#### *Study Population*

The population of interest is the *priced child care market* in Oregon. Facilities within the priced child care market have two characteristics: (1) they charge parents a price, and (2) the price is established through an arm's length transaction. In an arm's length transaction the buyer and seller do not have a prior relationship or shared membership that is likely to affect the price charged.<sup>iv</sup> The priced market does *not* include facilities who limit their care to persons they know, as is commonly the case with family, friend and neighbor caregivers.

Three major types of child care are included in the market price study: small home-based care, large home-based care, and centers.<sup>v</sup> Small home-based facilities offer care to a small group of children in the caregiver's own home. Large home-based facilities provide care to a larger group of children, typically in a family home. In Oregon, these facilities must be certified under Oregon State Law and are required to meet certain standards not required of a registered family child care facility. Child care centers operate in a non-residential facility and must be certified by the Office of Child Care, Early Learning Division unless they meet exemption criteria.

#### *Data Source*

The study universe includes all child care facilities in the priced child care market. The majority of family, friend, and neighbor caregivers have a prior relationship with the parent; thus, if they do charge a price it is not established at arm's length. The price is likely to be influenced by the prior relationship. The vast majority of family, friends, and neighbors are not part of the priced child care market.

The CCR&R database remains the most comprehensive and reliable data source for market prices. The statewide CCR&R database of child care facilities is an aggregate of 13 local CCR&R databases representing all counties in Oregon. CCR&R services in Oregon are provided by 13 independent, local agencies designated by the state. Each CCR&R is contracted to provide services in one of 13 Service Delivery Areas (SDA). Most agencies are housed within a larger parent agency, such as a community action program or a community college. All Oregon CCR&Rs are members of Central Coordination of the Oregon Child Care Resource & Referral, which coordinates and supports them in their efforts.

Given that almost all centers and small and large home-based care are captured in the Child Care Resource and Referral (CCR&R) database, the decision was made to use it for the 2014 market price study. The Office of Child Care, Early Learning Division's child care licensing database was not considered because it is not designed to capture facility price data. DHS's provider database contains data on facilities that serve families who receive DHS child care subsidies. Some of these providers are

---

<sup>iv</sup> Grobe, et al.: 2008 (ref. 12).

<sup>v</sup> Home-based child care providers are typically identified by their regulatory status: a) small home-based providers are known as registered family child care and b) large home-based providers are known as certified family child care. We use the terms small and large home-based care rather than the regulatory titles throughout this report.



enrolled with a CCR&R and/or regulated by CCD. Most listed providers, however, provide care only for family members or friends who receive DHS subsidies for child care. These facilities probably would not otherwise provide care or do not meet the arm's length criteria, and thus, are not part of the priced child care market.

In contrast, the vast majority of facilities in the CCR&R database offer care in the priced child care market. The CCR&R database was used in the 1992, 1994, 2000, 2002, 2004, 2006, 2008, 2010, and 2012 Oregon market price studies and has proven to be a reasonable source of price data in most communities.<sup>vi</sup> The sample of facilities contacted for the 1999 telephone survey was also drawn from the CCR&R database. CCR&R data include facility reports of their actual charges, thus it can be assumed that these data accurately reflect prices for child care. Finally, in preparation for the download of data for the price survey, CCR&R staff call facilities to assure information on prices and other facility characteristics is current. ***Given these characteristics, the 13 CCR&R databases were selected and combined to serve as the data source for the current 2014 market price study.***

Each CCR&R uses a software program called NACCRRAware. This database allows CCR&Rs to collect and store information on facilities and parents, and to match up parents seeking child care with complementary child care facilities. All facilities that are enrolled with a CCR&R are entered into the database. Information collected about facilities includes:

- Basic data such as name, address, telephone number.
- Type of care, days and hours of care, numbers and ages of children served, license and/or registration status, training and education of the child care facility, and information on the care environment and curriculum.
- Care charges (prices) for ages served.

These data elements are entered into the database. There is a major update of the database each year and minor updates each quarter. In addition, the database is updated whenever a facility notifies the CCR&Rs of changes in prices or other information.

For the market price survey, the CCR&Rs contact all facilities within a three-month period to collect current price and capacity data. Central Coordination checks the data for accuracy, then merges all of the data into one large database, from which various statistical reports can be drawn. Each year, Oregon finds additional uses for this centralized database. Currently, this database provides data for various research needs including the DHS Market Price Survey, the child care benchmarks, and the Oregon Child Care Research Partnership child care profiles.

#### *CCR&R 2014 Database Characteristics*

The data for the year 2014 market price study were downloaded from the 13 local CCR&R databases in April 2014, and compiled into a single database by Central Coordination. These data contained 5,077 facility records; 3,322 (65%) were small home-based child care facilities, 1,173 (23%) centers, and 582 (12%) large home-based care. **After facility records without price data were eliminated, the final study sample was 4,321 including 2,920 small home-based care, 860 centers, and 541 large home-based care.** (See Methodological Issues for discussion of data that were and were not included in the market price study data analysis).

---

<sup>vi</sup> References 2 through 11.

## DATA VALIDITY

---

Data are valid if they measure what they are intended to measure.<sup>vii</sup> Basic to the validity of market price study findings is the extent to which the facilities from which price data are collected represent all facilities with child care prices. Factors that affect the representativeness of market price study findings include: completeness of data, geographic representativeness, response rate, and currency of the data. On each of these indicators, the CCR&R 2014 database was assessed to be valid.

- *Data Completeness.* Data were very complete with limited missing data for critical variables and limited data from facilities that did not meet the definition of a priced child care market. For example, of the total sample of facilities, approximately 14% had no price data. This 14% included facilities (such as Head-Start programs) who do not directly charge consumers and thus have no prices to report. Other facilities refuse to submit prices for a variety of reasons. Reasons for refusals include complicated, variable prices or preferring to discuss prices directly with parents (see page 5 for further discussion). Overall, the price data were complete for 86% of the facilities in the CCR&R database.
- *Geographic Representativeness.* The CCR&R database included information gathered from all 36 Oregon counties. By any measure, the geographic detail and sample size are adequate to represent the population of Oregon facilities who offer care in the priced child care market.<sup>viii</sup>
- *Response Rate.* Ninety-eight percent of the prices in the CCR&R administrative dataset used for the market price survey had been updated within a three-month period. (The response rate was 99% with a six-month standard).
- *Data Currency.* Data are gathered or updated by the state's CCR&Rs each quarter. Price and capacity data were updated in the first quarter of 2014. Central Coordination downloaded data for this study in April 2014, the end of the quarter prior to the market price study analysis. Price data were based on complete declared prices that facilities offered in the marketplace. Of the price data collected by the CCR&Rs and stored in the CCR&R database, 98.5% were collected between January 1 and March 31, 2014, meeting a standard of three-month currency.

The CCR&R database provides data that are relevant to policy decision-making and facilitates comparison of market prices over time. Use of the CCR&R database provides a financially feasible source of price data that is large enough and comprehensive enough to reliably produce prices at both local and state levels. CCR&R data have been used in previous market price surveys both in Oregon and in other states. Consistency in data source facilitates comparing market prices over time. Use of existing datasets, such as the CCR&R database, decreases the costs and thus increases the feasibility of periodic data collection and analysis.

Further, the CCR&R database reflects the complexity of the child care market. Less complexity would oversimplify the market and the findings. However, complexity is often confusing. It falls to the analysis to ensure that findings related to key policy variables can be easily understood and interpreted.

---

<sup>vii</sup> Building Results III: 1998 (ref. 13)

<sup>viii</sup> Grobe, et al.: 2008 (ref. 12)



## Methodological Issues

### WHAT IS INCLUDED IN THE DATA ANALYSIS

This section describes the data that were included in the market price study data analysis, discussing the following:

- Elimination of records without price data
- Elimination of records not meeting the data currency standard
- Large Home-based Care as a Distinct Type of Care
- Part-time preschool program prices
- School-age school-year and school-age summer prices
- Converted prices

#### *Elimination of Records Without Price Data*

Of the 5,077 records provided by the CCR&R database, a total of 707 (14%) facility records were dropped from the study because no price data had been reported by these facilities to the local CCR&R. Of the 707 facilities eliminated because of no price data, 298 were centers; many of the excluded centers were classified as free programs to income eligible (such as Heart Start programs). In addition to the excluded centers, 375 small home-based care and 34 large home-based care were eliminated because of no price data.

**Table 1. Facilities Not Reporting Price Data (N=707)**

Category	Category Total
Negotiated prices or sliding scale	404
Program does not consider itself part of the market	202
Free program to income eligible <sup>a</sup>	101

Omitted facilities had given several reasons<sup>ix</sup> for not reporting price data (Table 1) to the CCR&R.

- Facilities with variable prices are the most frequently given reason for not submitting price data. Facilities who have a variable price structure either negotiate prices with parents or use a sliding scale based on income or the parent’s ability to work at the center.
- The second most common reason for not reporting price data was that the facility indicated they did not provide market care. This included facilities that are not open to the general public such as facilities associated with women’s shelters or with drug and treatment programs. It also includes providers who are only willing to care for children of family, friends or neighbors but who want to be included on the CCR&R database for some reason.
- The third most common reason was that the facility offered a free program for families who met specified income eligibility requirements. Head Start programs are examples of a no-fee program. Centers that do not have fees may require the parent to work at the center or participate in a program, or may have their costs reimbursed by grants or other agencies.

<sup>ix</sup> Specific information on the reasons for no price data was supplied by Central Coordination.

### *Elimination of Records Not Meeting the Data Currency Standard*

In accordance with national guidance to states on market price surveys, prices collected prior to the six month data collection period were removed from the analyses file because these older prices could skew findings. A total of 49 facility prices were updated prior to October 2013; six months before the data was downloaded for analysis.

***After records without price data and data not meeting the currency standard were eliminated, the final study sample was 4,321 including 2,920 small home-based facilities, 860 centers, and 541 large-based facilities.***

### *Large Home-based Care as a Distinct Type of Care*

A central question when conducting the market price analysis was how to represent data for larger home-based facilities. Should there be a separate price category for large home-based care? Or should large home-based care be combined with small home-based care or center care?

The decision on how to represent data for large home-based care is based on two factors: (1) the sample size of large home-based care prices, and (2) the similarity of large home-based care prices to small home-based care and center care prices. Similar to previous years, large home-based care prices were separated from center and small home-based care in the 2014 data analysis. A sufficient number of large home-based facilities (541) were included in the database to support separation of large home-based care from other care settings for data analysis. In addition, because large home-based prices tend to be lower than the prices reported by centers and higher than those reported by small home-based providers, there was concern that merging the large home-based data with either of these other types of care may affect the price findings (See Appendix B for detailed prices by facility type).

### *Part-Time Preschool Program Prices*

Because part-time preschool programs are a different market from full-day centers for preschool-age children and have a different price structure, their prices should be calculated separately. However, there are two issues regarding part-time preschool prices: the identification of part-time prices in the CCR&R database, and the ability to interpret the prices when identified. Recently, the CCR&Rs updated their databases so that part-time preschool program prices could be identified; however, the ability to interpret the prices is still a concern. For example, part-time preschool program prices may have been based on 2 days a week for 3-year-olds, 3 days a week for 4-year-olds, or only 1 day a week for some programs regardless of age. ***Because of this issue, the current market price study did not examine part-time preschool program prices.*** These prices are not included in the analysis of full-day program prices.

### *School-age School-year and School-age Summer Prices*

Because of improved data collection, the 2014 market price study reports both school-age school-year and school-age summer prices. Prior to 2002, only school-age school-year prices were reported. School-age school-year prices are considered inherently part-time prices, given they are typically based on before- and after-school care for 20 to 30 hours or less a week. School-age summer are full-time prices that are most similar to preschool-age prices. CCR&R databases were reconfigured so as to accurately capture both school-year and summer prices.

### *Converted Prices*

Prior to 2000, facilities were able to report in only one mode. One significant change with the move to the use of the NACCRRAware database is that facilities are able to report prices in all the modes that they charge: hourly, daily, weekly, or monthly. The result is four independent, non-equivalent price modes. In the 1992, 1994, and 1999 market price studies, formulas were used to convert all reported prices into one mode. For example, all hourly, daily, and weekly prices were converted into a monthly price using conversion formulas. The intent was to simplify reporting and facilitate comparison of prices. The problem with converted prices is their inability to convert accurately.<sup>x</sup> There is no basis for assuming the length of a day or number of days that would be considered full-time. Further, converted prices do not recognize that facilities who report only hourly prices may have systematically different prices than facilities who report prices by the day, week or month. In other words, facilities who charge on an hourly basis very likely form a different child care market than those who charge by the month, week or day.

***Because of concerns with the accuracy of converted price data, no prices were converted in the year 2014 data analysis. Rather, the prices were analyzed in the mode(s) that facilities reported them.***

### PRICE PER CHILD CARE SLOTS

---

The price per child care slots was calculated by weighting the reported prices by total facility capacity. The maximum number of children desired by the facility is used rather than regulated capacity, as many programs do not enroll to their legal capacity. Total age-group capacity was defined as the total capacity for a given age group - infants, toddlers, preschool-age, school-age school-year, or school-age summer. The purpose of calculating the price per child care slot was to represent the actual prices available to consumers in the community, regardless of whether it was a large or small facility.

***For centers and large home-based care, total age group capacity was used to weight care prices.***

Weighting prices by capacity is most important for centers, which vary extremely by size. Total age-group capacity data were used because: (1) it is possible to collect data on total age group capacity for centers and large home-based care, and (2) age-group capacity used in conjunction with the prices of that age group most accurately reflects weighted prices for that particular age group. For centers and large home-based care with missing age capacity data, age group capacity was estimated by calculating the proportion of total capacity from the available age group capacity data.

***For small home-based providers, total capacity regardless of age of child served, was used to weight care prices.*** Unlike centers and large home-based care that are licensed for a set capacity for each age group, small home-based providers are licensed for a total capacity (with some restrictions such as no more than two children under age two).

### GEOGRAPHICALLY DEFINED CLUSTERS

---

One of the goals for the year 2014 market price study is to identify the geographic distribution of prices across the state. DHS seeks to set its allowable maximum subsidy rates so that families eligible for child

---

<sup>x</sup> Market Rates, 1994: 1995 (ref. 3).

care subsidies have access comparable to other families in the general population. It is presumed this access would be assured if the subsidy rates were set at the 75<sup>th</sup> percentile<sup>xi</sup> of the market price within a geographically defined area.<sup>xii</sup>

Geographic rate areas were initially established in the 1992 child care market price study. Geographic groups were determined by combining zip code areas with similar child care prices to create geographic groupings called rate areas (A, B, C). Rate area A represented zip codes with higher prices while the lowest prices were found in rate area C. This method relied on a more hands-on approach than did using a statistical software package to create the groups. It identified groups in the price data by looking for high-frequency values and dividing them into groups when there were gaps in prices. From past experience, three groups or rate areas have tended to work well given the price distributions in Oregon. Each zip code was then assigned to a rate area based on the most common rate area for each pricing mode. A critical step in the process was to smooth the rate areas in order to ensure geographical consistency. If a zip code area was assigned a different rate area than its neighbors, the data were examined to determine whether this zip code represented a separate market. Also key to the method was the guidance of an advisory committee with extensive knowledge of local child care markets to help define these markets and identify situations when smoothing was necessary.

Although this method has been used since 1992 and has validated the existence of three different rate areas in Oregon, analyses of prices in 2010 and, even more strongly in 2012, indicated changes in how providers were pricing services and suggested that the three rate areas may no longer be accurately describing prices. For example, programs were being categorized into the high rate area or remaining in the current rate area, in part, due to a DHS policy that no zip code should move to a lower rate area. In addition, there were signs that center and small home-based care prices were not grouping in the same rate areas. Analyses indicated that center and large home-based child care prices were steadily increasing and that prices of small home-based providers were stagnating. Validity testing indicated that the rate areas no longer accurately captured the geographic diversity of the child care market.

In preliminary analyses of the 2014 data we found continuation of these trends in geographic groupings that had been observed in 2010 and 2012. Using guidance from a national study on market price surveys we looked into alternative methods to group together areas with similar child care prices.<sup>xiii</sup> After careful consideration we decided to use a univariate classification statistical method based on Jenks optimal "natural breaks". This method looks for groups or clusters that occur in the data (based on one variable or characteristic such as prices) and provides a systematic way to find the optimal natural breaks between groups. The steps used to identify geographic price clusters in 2014 are summarized below.

**Step 1** was to determine which age group prices were most representative of all age group prices. Using small home-based, center, and large home-based care data for each zip code area, a *combined* average price for infant, toddler and preschool age care was calculated and compared to the average prices for each separate age group. (See Table 2 for a sample of this comparison).

---

<sup>xi</sup> The preamble to the CCDF Final Rule suggests as a benchmark that rates established at least at the 75<sup>th</sup> percentile "would be regarded as providing equal access." Ensuring equal access is one of three components outline in the federal regulations.

<sup>xii</sup> Child Care and Development Fund Final Rule: 1998 (ref. 14).

<sup>xiii</sup> Grobe, et al.: 2008 (ref. 12)

**Table 2. Comparison of the Average Price Combined for Infants, Toddlers, and Preschool Age to Average Prices by Child Age Group, Using a Selected Sample of Small Home-based Care Data**

City	ZipCode	Average <sup>a</sup> Hourly Prices	Average Small Home-based Infant		Average Small Home-based Toddler		Average Small Home-based Preschool		Average <sup>a</sup> Monthly Prices	Average Small Home-based Infant		Average Small Home-based Toddler		Average Small Home-based Preschool	
			Hourly		Hourly		Hourly			Monthly		Monthly		Monthly	
			N <sup>b</sup>	Avg. Price	N <sup>b</sup>	Avg. Price	N <sup>b</sup>	Avg. Price		N <sup>b</sup>	Avg. Price	N <sup>b</sup>	Avg. Price	N <sup>b</sup>	Avg. Price
Aurora	97002	\$2.00	1	\$2.00	1	\$2.00	1	\$2.00	\$325	1	\$325	1	\$325	1	\$325
Beavercreek	97004	\$2.63	3	\$2.63	3	\$2.63	3	\$2.63	\$325	0	-	0	-	1	\$325
Beaverton	97005	\$2.85	5	\$3.10	5	\$2.75	5	\$2.70	\$463	5	\$508	5	\$478	3	\$401
Aloha	97006	\$2.26	19	\$2.36	22	\$2.22	23	\$2.22	\$396	6	\$399	7	\$396	7	\$394
Aloha	97007	\$2.32	11	\$2.36	13	\$2.37	14	\$2.23	\$439	7	\$461	7	\$446	7	\$411
Beaverton	97008	\$2.50	3	\$2.75	4	\$2.56	5	\$2.20	\$488	3	\$542	5	\$480	6	\$442

<sup>a</sup> Average price across age groups (infants, toddlers, and preschool age in full-time care) using small home-based care data.

<sup>b</sup> Sample size of providers with prices for that particular zip code.

Toddler prices were found to be closest to the combined price, and most representative of all age group prices. ***Thus toddler prices were selected as the basis for grouping zip codes by price data. Toddler prices were also used as the basis for grouping price data in previous studies.***

Once toddler prices were selected to represent all age group prices, **Step 2** was to determine the predominate mode (hourly, daily, weekly, monthly) used by facilities for each type of care. Selecting the predominate mode by type of care is important because it produces the largest sample size in which to conduct the cluster analysis. The two most common modes in Oregon are hourly and monthly. Table 3 provides a comparison of these modes over the last three Market Price Studies. For small home-based care, hourly continues to be the predominate mode facilities used to charge parents. For center and large home-based care, monthly is the most common mode reported by facilities for all types of care in 2014. ***Thus, the cluster analysis used the most common mode used by facilities for toddler care. Hourly was used for small home-based care and monthly for center and large home-based care.***

**Step 3** involved calculating the 75<sup>th</sup> percentile for toddler prices in each zip code area using small home-based, center, and large home-based toddler price data. These data were used to run the cluster analysis in a statistical software program. Various clusters and cluster methods were performed and results were evaluated by the advisory committee. ***Based on the results of the analysis, the committee recommended three clusters (1-3) for small home-based care and four clusters (1-4) for center and large home-based care.*** Higher number clusters represent higher prices and vice versa for lower cluster numbers.

Table 3. Comparison of Number of Providers Who Charge in a Particular Mode Based on the 2014, 2012, and 2010 Market Price Studies, by Type of Care and Age of Child

	2014		2012		2010	
	<i>Hourly</i>	<i>Monthly</i>	<i>Hourly</i>	<i>Monthly</i>	<i>Hourly</i>	<i>Monthly</i>
<b>Small Home-based</b>						
Infant	1421	844	2004	1011	2367	1167
Toddler	1541	890	2193	1058	2592	1267
Preschool Age	1604	910	2306	1100	2674	1315
School Age School Year	1435	402	2288	502	2627	794
School Age Summer	1204	611	2323	715	1693	816
<b>Center</b>						
Infant	35	233	55	212	59	202
Toddler	45	294	67	272	75	263
Preschool Age	84	421	124	408	145	396
School Age School Year	98	345	138	354	175	419
School Age Summer	59	163	134	180	75	157
<b>Large Home-based</b>						
Infant	82	244	134	240	103	204
Toddler	103	285	154	285	120	245
Preschool Age	111	319	169	304	128	257
School Age School Year	88	106	149	110	127	132
School Age Summer	72	146	153	133	74	93

Note: Light gray shading represents the highest number of facilities for that row; prices include any mode the facility provided data for.

**Step 4** used the results in Step 3 to determine the range of prices, by type of care, for each of the clusters. The cluster procedures were repeated for all price data available by hourly small home-based care (infant, toddler, preschool age) and monthly center and large home-based care (infant, toddler, preschool age). These results were used to determine which cluster a particular zip code fell into based on the 75th percentile price data from various age groups. Table 4 provides a few examples of the data used to determine a zip code cluster. In the first example, all the prices for zip code 97702 across age groups for center and large home-based care fell in cluster 2. In the second and third examples, the prices fell predominately in cluster 3. Although the final example has a couple of prices that were within the cluster 3 range, it represents only one facility in that zip code. Thus, zip code 97211 was classified as cluster 4.

Table 4. Example of Data Used to Determine Price Cluster for Center and Large Home-based Care by Zip code

Zip	Toddler Monthly Prices at 75th Percentile, Center Care Data		Infant Monthly Prices at 75th Percentile, Center Care Data		Preschool Monthly Prices at 75th Percentile, Center Care Data		Toddler Monthly Prices at 75th Percentile, Large Home-based Data		Infant Monthly Prices at 75th Percentile, Large Home-based Data		Preschool Monthly Prices at 75th Percentile, Large Home-based Data				
	N	Clus.	N	Clus.	N	Clus.	N	Clus.	N	Clus.	N	Clus.			
97702	5	\$820	2	3	\$775	2	5	\$685	2	2	\$675	2	2	\$675	2
97220	6	\$998	3	4	\$1130	3	6	\$858	3	2	\$900	3	2	\$965	3
97224	4	\$960	2	4	\$960	3	5	\$740	2	3	\$850	3	3	\$950	3
97211	3	\$1220	4	3	\$1340	4	1	\$950	3	7	\$1135	4	3	\$1340	4

Once the zip codes are divided into these preliminary clusters, a series of tests are done to make sure that, based on price data, they make sense. Finally, a critical step is to smooth the clustering in order to ensure **geographical consistency**. Price consistency within geographic or political boundaries was desired to avoid “islands” of price discrepancy. For example, based on prices alone, one northwest Portland zip code was originally assigned to a lower priced cluster. However, this zip code was fully surrounded by the balance of Portland zip codes that were in a higher priced cluster. Child care markets are made up of parents and providers who have access to one another. Within a city, a zip code does not operate as its own market as parents commonly live in one zip code and access care in another zip code. A city represents a better option for approximating a child care market. However, for larger cities a single child care market may not accurately reflect the price structure of that city. For example, further analysis of Portland prices indicated a significant difference in the 75<sup>th</sup> percentile of toddler prices for those zip codes West of Interstate 205 and those zip codes East of Interstate 205. The decision was made to have two price clusters reflect these price differences in the Portland metropolitan area. For smaller cities such as Eugene, Salem and Bend, a single child care market best reflects their price structure.

In some geographic areas, very small sample sizes or records without price data limited reliability of the data. In these cases, price patterns for neighboring zip codes and from previous market price studies were used to identify current clusters

**Step 5** was to propose the geographic price clusters. These clusters were then used as the basis for all subsequent analyses.

## Findings

### YEAR 2014 STATEWIDE CHILD CARE PRICES

Statewide, full-time child care prices are shown in Table 5. These prices are based on the charges reported by child care facilities to their local CCR&Rs. Specifically, Table 5 shows the **full-time prices** at the 75<sup>th</sup> percentile of child care slots by **type of care** (small home-based, center, large home-based), **age of child** served (infant, toddler, preschool-age, school-age school-year, school-age summer), and by **pricing modes** (hourly, monthly).

**The 75<sup>th</sup> percentile of prices is the price level at which 75% of child care slots may be purchased.** For example, the 75<sup>th</sup> percentile of infant care prices is \$600 for full-time, monthly small home-based child care. This means that statewide 75% of the infant slots may be purchased for \$600 a month or less in small home-based child care settings.

**Table 5. Statewide Full Time Prices  
at the 75<sup>th</sup> Percentile for Child Care Slots**

TYPE OF CHILD CARE & PRICING MODE	Infant	Toddler	Preschool Age	School Age School Year	School Age Summer
<i>Small Home-based</i>					
Hourly	\$3.50	\$3.25	\$3.00	\$3.00	\$3.00
Monthly	\$600	\$600	\$550	\$500	\$500
<i>Center</i>					
Hourly	\$7.25	\$6.25	\$5.95	\$6.00	\$4.75
Monthly	\$1,219	\$1,200	\$890	\$477	\$779
<i>Large Home-based</i>					
Hourly	\$4.25	\$4.00	\$4.25	\$4.00	\$4.00
Monthly	\$960	\$910	\$810	\$620	\$650

See Appendix B for complete results.

Several trends in statewide child care prices are apparent in Table 5. Among these are the following.

- Prices are lower for small home-based child care than for centers and large home-based care regardless of age of child served or pricing mode.
- For centers and large home-based care, preschool and school-age prices are lower than infant and toddler care prices.
- Large home-based prices are more consistent with center prices than with small home-based prices, especially for infant, toddler, and preschool age monthly prices.

These statewide figures are informative but do not capture the substantial range of prices found across Oregon. Child care markets are local and prices differ substantially across the state. The next section describes the findings of the geographic cluster analysis that explored price differences across communities.



## YEAR 2014 GEOGRAPHIC PRICE CLUSTERS

---

As described earlier, an analysis of prices by zip code was used to identify similar child care markets (see methodology in previous chapter). The result was the identification of three clusters (1-3) for small home-based providers, and four clusters (1-4) for centers and large home-based care. Higher number clusters represent zip codes with higher prices and vice versa for lower cluster numbers.

### *Comparison of Statewide Prices and Prices in the Clusters*

To test the validity of the clusters, we compared Oregon statewide prices to prices in the clusters. If the clusters were valid, within care type and age group served, higher numbered cluster prices should exceed the statewide price, lower numbered cluster prices should be lower than the statewide price. Figure 1 graphs comparing the 75<sup>th</sup> percentile hourly or monthly prices per child care slot, across type of care, and age group served demonstrate that:

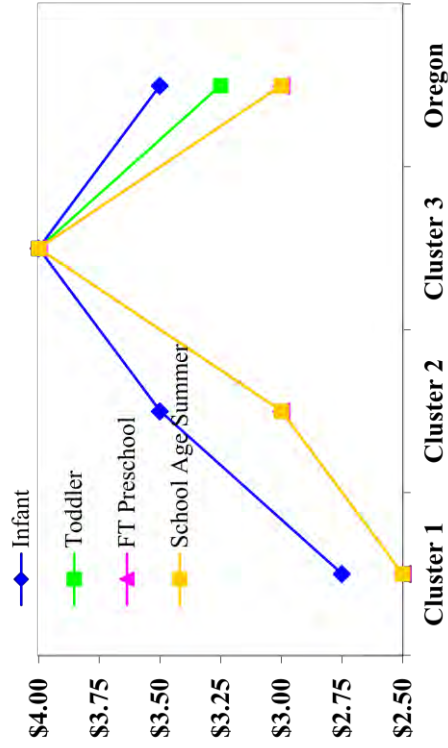
- ***Prices consistently differ by clusters for all types of care and age of child served.*** Higher numbered clusters are consistently the highest prices in the state especially for infant and toddler care, and lower numbered clusters are the lowest prices.
- ***The greatest differences in prices by clusters were found for center care and large home-based care.*** This is especially true for infant and toddler care prices. For example, in Cluster 4 the 75<sup>th</sup> percentile center care for infant care is \$1,350 per month while in Cluster 1 this percentile price is \$699 per month, a difference of \$651 per month. Similarly, the 75<sup>th</sup> percentile price for infant care in large home-based care is \$1,230 in Cluster 4 while in Cluster 1 this price is \$560 per month, a difference of \$670 per month.
- ***Small home-based care prices showed only small differences by prices, by geographic areas.*** Small home-based care monthly prices ranged from \$650 in Cluster 3 to \$500 in Cluster 1 for infant care. These price differences are about \$150 per month, substantially less than the \$651 to \$670 differences observed in center and large home-based care prices by clusters (reported above).

***These patterns validated the clusters and provide evidence of different child care markets in Oregon; these markets are also influenced by type of care provided. Nonetheless, the validation also provides evidence of a trend in price differences based on age of child served. Preschool age and school age summer show smaller price differentials between clusters, especially for center care.***

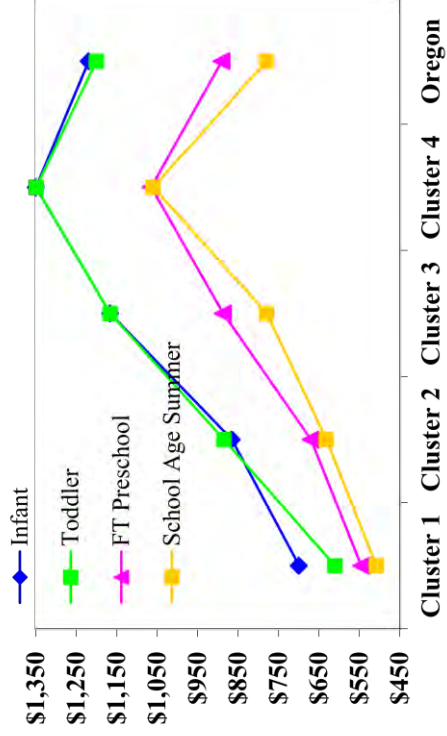
Overall, the geographic analysis showed the small home-based care prices to be lower in rural areas of the state and higher in the Portland metropolitan area, parts of Benton, Clackamas, Deschutes, Jackson, Lincoln, and Yamhill counties. For center and large home-based care, higher prices were found in the Portland metropolitan area, parts of the Mid-Willamette Valley, and Hood River county (see maps below).

**Figure 1<sup>a</sup>**  
**Comparison of 2014 Clusters and Oregon Statewide Prices by Child Care Slots**

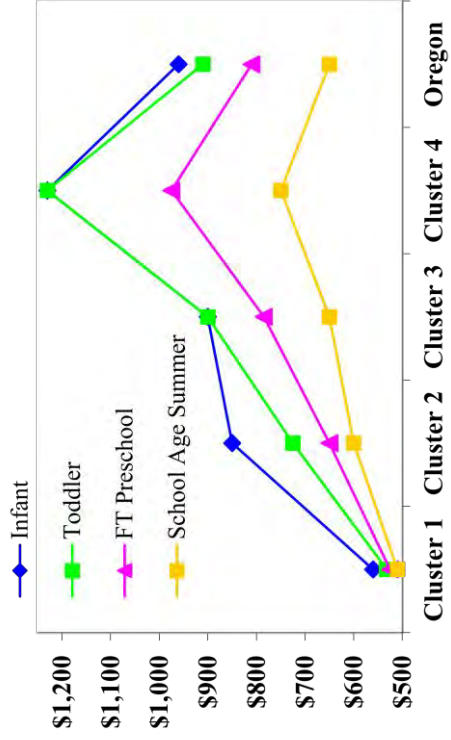
**Small Home-based Care, Hourly, 75<sup>th</sup> Percentile**

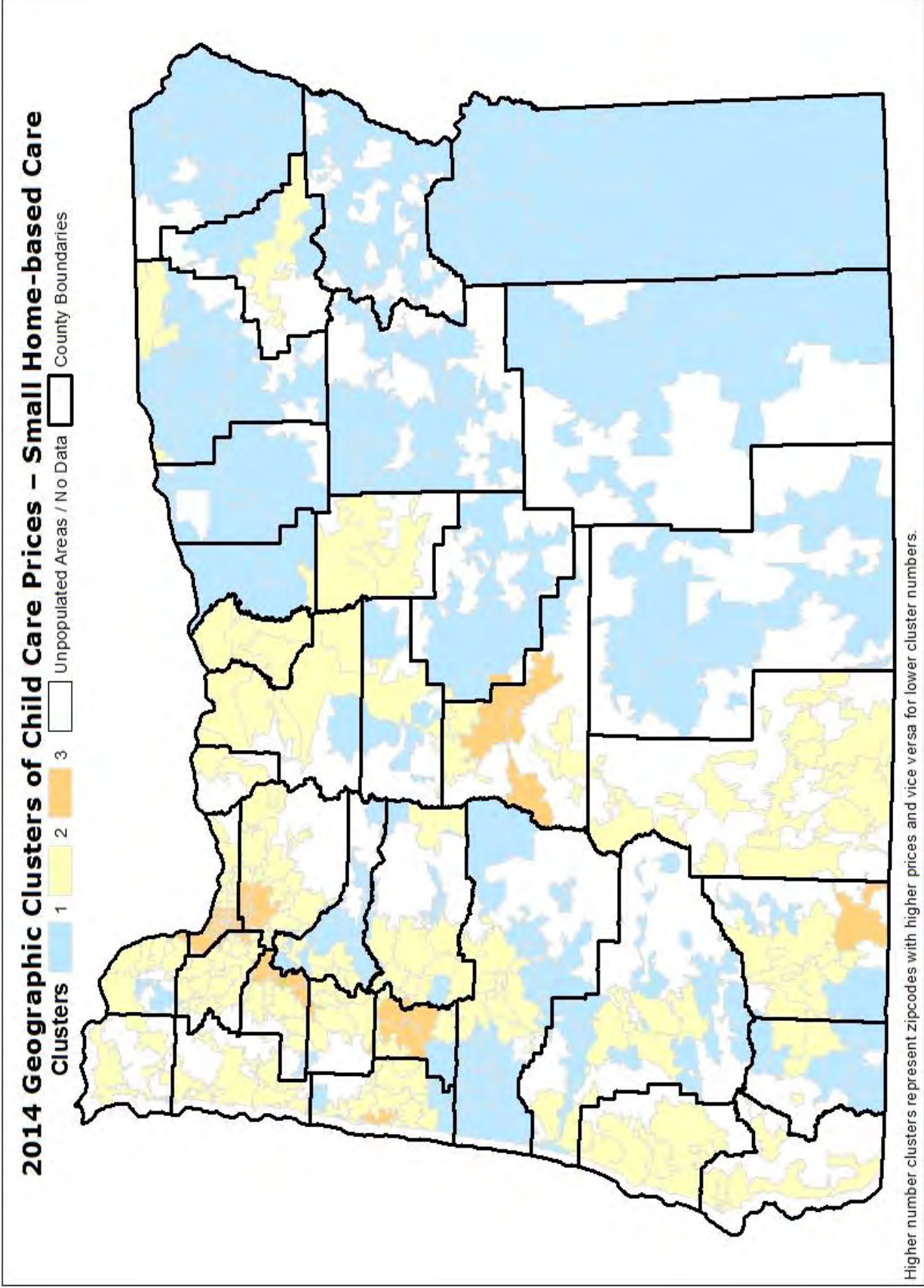


**Center Care, Monthly, 75<sup>th</sup> Percentile**

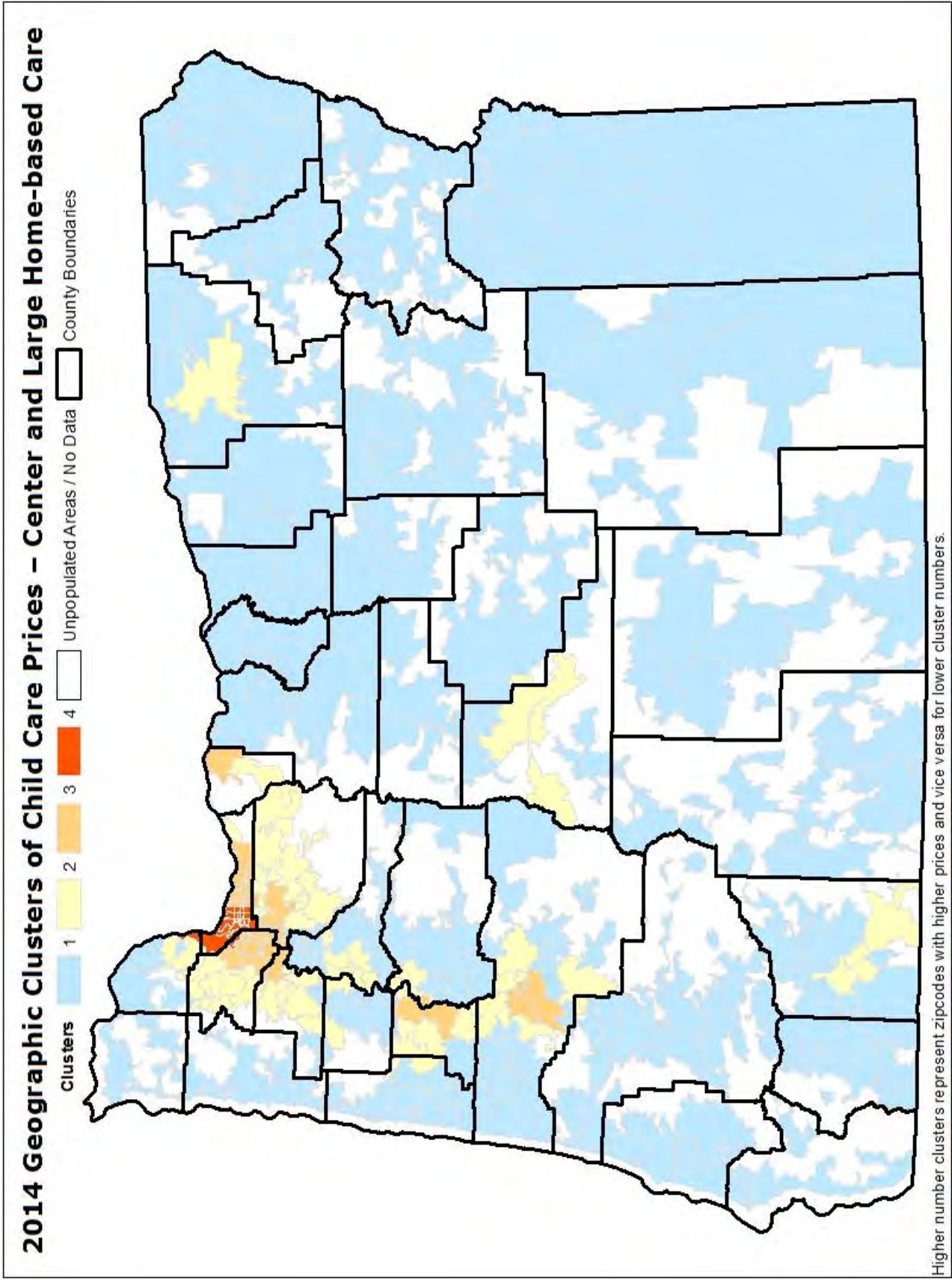


**Large Home-based Care, Monthly, 75<sup>th</sup> Percentile**









### *Comparison of Child Care Facility Prices and Child Care Slot Prices*

Tables 6, 7, and 8 compare statewide prices and prices in the clusters by type of care, by age of child served, and by price type (child care facility price or child care slot price). Slot prices were determined by multiplying the facility price by the maximum number of children desired by the facility (slots). This comparison was made to determine if the facility price or slot price differed systematically.

The 75<sup>th</sup> percentile levels for child care facility prices and child care slot prices were compared. This comparison revealed that the prices are similar within age groups and facility type, whether these prices are by facility or by child care slot.

- Among small home-based care, monthly facility prices and monthly slot prices were identical in 10 of the 15 comparisons (Table 6, monthly 75<sup>th</sup> percentile prices, Clusters 1-3, by child age). Where price differences were observed, facility prices were *higher* in two of the five cases than slot prices, although the facility prices were less than \$25 higher than the slot prices.
- Among center care facilities, monthly prices for child care slots were *higher* than monthly facility prices in 11 of the 20 comparisons, lower than monthly facility prices in 7 of the 20 comparisons, and the same in 2 comparisons (Table 7, monthly 75<sup>th</sup> percentile prices, Clusters 1-4, by child age). Slot prices (11 of the 20 comparisons) averaged \$49 higher than the unweighted prices, and averaged \$25 lower than unweighted prices.
- Among large home-based care, monthly facility prices and monthly slot prices were identical in 9 of the 20 comparisons (Table 8, monthly 75<sup>th</sup> percentile prices, Clusters 1-4, by child age). In 7 cases, slot prices were *higher* than unweighted facility prices by an average of \$42; in 4 cases, the slots price was *lower* than the unweighted facility price by an average of \$25.

These findings suggest that prices do not vary substantially whether reported as facility prices or weighted by the capacity (slots). Facilities with larger care capacity (those with more slots) did not charge systematically higher or lower prices for care at the monthly, 75<sup>th</sup> percentile.

***Given the non-systematic differences found between facility prices and slot prices at the 75<sup>th</sup> percentile monthly price, either could be used to represent costs of care. Because child care slot prices most accurately represent the prices available to consumers in the community, child care slot prices were used as the basis for graphs of prices as well as the basis for final identification of geographic clusters.***

**Table 6. 2014 Clusters Compared to Oregon Statewide Prices for Small Home-based Care**

	Cluster 1		Cluster 2		Cluster 3		Oregon
	Child Care Facilities	Child Care Slots	Child Care Facilities	Child Care Slots	Child Care Facilities	Child Care Slots	Child Care Slots
<b>INFANT</b>							
<b>Hourly</b>	N=184	N=1,038	N=1,033	N=6,860	N=176	N=1,153	N=9,051
75th	\$2.75	\$2.75	\$3.50	\$3.50	\$4.38	\$4.00	\$3.50
50th	\$2.50	\$2.50	\$3.00	\$3.00	\$3.50	\$3.50	\$3.00
<b>Monthly</b>	N=100	N=691	N=602	N=4,179	N=135	N=954	N=5,824
75th	\$500	\$500	\$600	\$600	\$660	\$650	\$600
50th	\$450	\$450	\$500	\$500	\$600	\$600	\$500
<b>TODDLER</b>							
<b>Hourly</b>	N=188	N=1,046	N=1,127	N=7,553	N=192	N=1,245	N=9,844
75th	\$2.50	\$2.50	\$3.00	\$3.00	\$4.00	\$4.00	\$3.25
50th	\$2.50	\$2.50	\$3.00	\$3.00	\$3.25	\$3.50	\$3.00
<b>Monthly</b>	N=98	N=683	N=629	N=4,369	N=152	N=1,043	N=6,095
75th	\$480	\$480	\$575	\$600	\$650	\$650	\$600
50th	\$425	\$425	\$500	\$500	\$600	\$600	\$500
<b>PRESCHOOL AGE</b>							
<b>Hourly</b>	N=193	N=1,086	N=1,171	N=7,792	N=201	N=1,293	N=10,171
75th	\$2.50	\$2.50	\$3.00	\$3.00	\$4.00	\$4.00	\$3.00
50th	\$2.50	\$2.50	\$3.00	\$3.00	\$3.00	\$3.00	\$3.00
<b>Monthly</b>	N=102	N=728	N=644	N=4,439	N=151	N=1,040	N=6,207
75th	\$475	\$475	\$543	\$550	\$620	\$620	\$550
50th	\$425	\$425	\$475	\$475	\$550	\$550	\$480
<b>SCHOOL AGE SCHOOL YEAR</b>							
<b>Hourly</b>	N=134	N=820	N=1,071	N=7,232	N=193	N=1,248	N=9,300
75th	\$2.50	\$2.50	\$3.00	\$3.00	\$4.00	\$4.00	\$3.00
50th	\$2.50	\$2.50	\$3.00	\$3.00	\$3.00	\$3.00	\$3.00
<b>Monthly</b>	N=40	N=303	N=280	N=2,019	N=75	N=520	N=2,842
75th	\$450	\$450	\$495	\$500	\$550	\$525	\$500
50th	\$410	\$400	\$400	\$421	\$450	\$450	\$421
<b>SCHOOL AGE SUMMER</b>							
<b>Hourly</b>	N=155	N=885	N=868	N=5,765	N=148	N=982	N=7,632
75th	\$2.50	\$2.50	\$3.00	\$3.00	\$4.00	\$4.00	\$3.00
50th	\$2.40	\$2.50	\$3.00	\$3.00	\$3.00	\$3.00	\$3.00
<b>Monthly</b>	N=75	N=538	N=429	N=3,024	N=100	N=710	N=4,272
75th	\$450	\$450	\$500	\$500	\$600	\$600	\$500
50th	\$400	\$400	\$450	\$450	\$513	\$500	\$450

See Appendix C for complete results.

Table 7. 2014 Clusters Compared to Oregon Statewide Prices for Center Care

	Cluster 1		Cluster 2		Cluster 3		Cluster 4		Oregon
	Child Care Facilities	Child Care Slots	Child Care Facilities	Child Care Slots	Child Care Facilities	Child Care Slots	Child Care Facilities	Child Care Slots	Child Care Slots
<b>INFANT</b>									
<b>Hourly</b>	N=16	N=129	N=8	N=46	N=7	N=75	N=2	N=9	N=259
75th	\$4.30	\$5.00	\$5.63	\$6.00	\$12.00	\$12.00	\$15.00	\$15.00	\$7.25
50th	\$3.88	\$4.00	\$4.98	\$5.25	\$7.25	\$7.25	\$11.00	\$15.00	\$5.00
<b>Monthly</b>	N=34	N=293	N=60	N=478	N=78	N=782	N=56	N=667	N=2,220
75th	\$675	\$699	\$861	\$865	\$1,109	\$1,166	\$1,345	\$1,350	\$1,219
50th	\$593	\$600	\$733	\$730	\$998	\$1,037	\$1,218	\$1,250	\$997
<b>TODDLER</b>									
<b>Hourly</b>	N=19	N=196	N=11	N=75	N=8	N=75	N=4	N=17	N=363
75th	\$4.10	\$5.00	\$6.00	\$6.50	\$10.00	\$6.25	\$11.50	\$6.50	\$6.25
50th	\$3.50	\$4.00	\$4.75	\$5.00	\$6.63	\$6.25	\$7.50	\$6.50	\$4.95
<b>Monthly</b>	N=43	N=350	N=76	N=662	N=102	N=1,083	N=67	N=1,040	N=3,135
75th	\$625	\$610	\$812	\$885	\$1,090	\$1,166	\$1,272	\$1,349	\$1,200
50th	\$575	\$575	\$707	\$740	\$986	\$1,050	\$1,121	\$1,219	\$998
<b>PRESCHOOL AGE</b>									
<b>Hourly</b>	N=32	N=607	N=24	N=611	N=14	N=232	N=7	N=282	N=1,732
75th	\$3.88	\$4.00	\$5.00	\$4.65	\$8.00	\$10.25	\$7.00	\$6.00	\$5.95
50th	\$3.35	\$3.25	\$4.10	\$4.00	\$4.93	\$8.00	\$6.00	\$6.00	\$4.00
<b>Monthly</b>	N=65	N=1,330	N=112	N=2,966	N=144	N=4,564	N=85	N=2,852	N=11,712
75th	\$555	\$545	\$675	\$670	\$875	\$887	\$1,010	\$1,065	\$890
50th	\$490	\$453	\$595	\$585	\$768	\$800	\$880	\$930	\$740
<b>SCHOOL AGE SCHOOL YEAR</b>									
<b>Hourly</b>	N=29	N=507	N=17	N=346	N=16	N=410	N=7	N=167	N=1,430
75th	\$4.00	\$4.00	\$5.00	\$4.75	\$9.63	\$9.25	\$10.00	\$6.00	\$6.00
50th	\$3.50	\$3.50	\$4.20	\$4.40	\$6.50	\$7.00	\$6.00	\$6.00	\$4.50
<b>Monthly</b>	N=17	N=431	N=68	N=1,728	N=91	N=2,771	N=54	N=2,479	N=7,409
75th	\$385	\$364	\$458	\$394	\$540	\$540	\$500	\$475	\$477
50th	\$360	\$360	\$332	\$280	\$409	\$409	\$417	\$417	\$394
<b>SCHOOL AGE SUMMER</b>									
<b>Hourly</b>	N=29	N=676	N=12	N=306	N=4	N=103	N=5	N=228	N=1,313
75th	\$4.00	\$3.52	\$5.48	\$5.95	\$11.82	\$10.00	\$7.54	\$6.00	\$4.75
50th	\$3.25	\$3.15	\$4.13	\$4.40	\$9.63	\$9.25	\$6.00	\$4.50	\$4.00
<b>Monthly</b>	N=26	N=670	N=42	N=1,346	N=55	N=1,959	N=34	N=1,312	N=5,287
75th	\$545	\$508	\$620	\$632	\$779	\$779	\$944	\$1,060	\$779
50th	\$498	\$467	\$565	\$570	\$635	\$685	\$725	\$850	\$600

See Appendix C for complete results.

**Table 8. 2014 Clusters Compared to Oregon Statewide Prices for Large Home-based Care**

	Cluster 1		Cluster 2		Cluster 3		Cluster 4		Oregon
	Child Care Facilities	Child Care Slots	Child Care Facilities	Child Care Slots	Child Care Facilities	Child Care Slots	Child Care Facilities	Child Care Slots	Child Care Slots
<b>INFANT</b>									
<b>Hourly</b>	N=23	N=52	N=28	N=68	N=25	N=60	N=6	N=15	N=195
75th	\$3.25	\$3.50	\$4.00	\$4.00	\$5.00	\$5.00	\$6.50	\$6.50	\$4.25
50th	\$3.00	\$3.00	\$3.00	\$3.00	\$4.25	\$4.25	\$5.75	\$5.50	\$3.50
<b>Monthly</b>	N=33	N=74	N=74	N=159	N=92	N=220	N=40	N=149	N=602
75th	\$550	\$560	\$775	\$850	\$900	\$900	\$1,230	\$1,230	\$960
50th	\$525	\$525	\$595	\$650	\$860	\$860	\$988	\$1,100	\$855
<b>TODDLER</b>									
<b>Hourly</b>	N=29	N=60	N=32	N=47	N=34	N=16	N=8	N=14	N=137
75th	\$3.50	\$3.50	\$4.00	\$3.75	\$5.00	\$4.75	\$7.50	\$5.50	\$4.00
50th	\$3.00	\$3.00	\$3.25	\$3.00	\$4.25	\$4.13	\$5.00	\$5.50	\$3.25
<b>Monthly</b>	N=40	N=68	N=79	N=153	N=102	N=188	N=55	N=169	N=578
75th	\$532	\$532	\$725	\$725	\$900	\$900	\$1,200	\$1,230	\$910
50th	\$490	\$525	\$550	\$550	\$783	\$850	\$975	\$1,155	\$760
<b>PRESCHOOL AGE</b>									
<b>Hourly</b>	N=32	N=166	N=34	N=160	N=37	N=127	N=8	N=40	N=493
75th	\$3.50	\$3.50	\$4.00	\$4.00	\$5.00	\$5.00	\$9.75	\$10.00	\$4.25
50th	\$3.00	\$3.00	\$3.50	\$3.50	\$4.00	\$4.38	\$5.00	\$5.00	\$3.50
<b>Monthly</b>	N=42	N=212	N=89	N=500	N=116	N=508	N=61	N=487	N=1,707
75th	\$513	\$525	\$675	\$650	\$796	\$785	\$980	\$975	\$810
50th	\$490	\$480	\$540	\$525	\$700	\$700	\$845	\$845	\$675
<b>SCHOOL AGE SCHOOL YEAR</b>									
<b>Hourly</b>	N=22	N=128	N=34	N=199	N=28	N=176	N=3	N=14	N=517
75th	\$3.50	\$3.50	\$4.00	\$4.00	\$4.50	\$4.50	\$5.00	\$5.00	\$4.00
50th	\$3.00	\$3.00	\$3.50	\$3.70	\$4.00	\$4.00	\$4.50	\$4.50	\$3.50
<b>Monthly</b>	N=17	N=97	N=31	N=158	N=44	N=268	N=10	N=42	N=565
75th	\$450	\$510	\$650	\$600	\$650	\$650	\$650	\$650	\$620
50th	\$400	\$450	\$490	\$490	\$600	\$600	\$608	\$575	\$500
<b>SCHOOL AGE SUMMER</b>									
<b>Hourly</b>	N=19	N=123	N=25	N=162	N=25	N=158	N=3	N=21	N=464
75th	\$3.00	\$3.50	\$4.00	\$4.00	\$4.00	\$4.00	\$5.00	\$5.00	\$4.00
50th	\$3.00	\$3.00	\$3.70	\$3.75	\$3.00	\$3.25	\$4.50	\$4.50	\$3.00
<b>Monthly</b>	N=29	N=189	N=52	N=357	N=54	N=355	N=9	N=55	N=956
75th	\$500	\$510	\$600	\$600	\$650	\$650	\$650	\$750	\$650
50th	\$450	\$450	\$533	\$540	\$600	\$600	\$650	\$650	\$550

See Appendix C for complete results.



## COMPARISON OF 2014 MARKET PRICE DATA WITH PREVIOUS MARKET PRICE DATA

To further examine changes in facility prices over the years, market price data in 1994, 1999, 2000, 2002, 2004, 2006, 2008, 2010, 2012, and 2014 were compared. Table 9 presents the statewide 50<sup>th</sup> and 75<sup>th</sup> percentile full-time prices, by type of care, and by age groups served.

**Table 9. Comparison: Full Time Prices at the 50<sup>th</sup> and 75<sup>th</sup> Percentile Among Oregon Statewide Child Care Slots**

	Infant	Toddler	Preschool Age	School Age School Year	School Age Summer
<b>Small Home-based Hourly</b>					
<i>50<sup>th</sup> Percentile<sup>a</sup></i>					
CCR&R 1994	\$1.75	\$1.50	\$1.50	\$1.50	-
CCR&R 2000	\$2.00	\$2.00	\$2.00	\$2.00	\$1.75
CCR&R 2002	\$2.00	\$2.00	\$2.00	\$2.00	\$2.00
CCR&R 2004	\$2.25	\$2.00	\$2.00	\$2.00	\$2.00
CCR&R 2006	\$2.50	\$2.25	\$2.25	\$2.25	\$2.25
CCR&R 2008	\$2.50	\$2.50	\$2.50	\$2.50	\$2.50
CCR&R 2010	\$3.00	\$2.70	\$2.50	\$2.50	\$2.50
CCR&R 2012	\$3.00	\$2.75	\$2.50	\$2.50	\$2.50
CCR&R 2014	\$3.00	\$3.00	\$3.00	\$3.00	\$3.00
<i>75<sup>th</sup> Percentile</i>					
CCR&R 1994	\$2.00	\$1.75	\$1.75	\$1.65	-
Survey 1999 <sup>b</sup>	\$2.50	\$2.25	\$2.00	\$2.00	-
CCR&R 2000	\$2.25	\$2.05	\$2.00	\$2.00	\$2.00
CCR&R 2002	\$2.50	\$2.35	\$2.25	\$2.25	\$2.25
CCR&R 2004	\$2.50	\$2.50	\$2.50	\$2.50	\$2.35
CCR&R 2006	\$2.80	\$2.50	\$2.50	\$2.50	\$2.50
CCR&R 2008	\$3.00	\$3.00	\$3.00	\$3.00	\$3.00
CCR&R 2010	\$3.00	\$3.00	\$3.00	\$3.00	\$3.00
CCR&R 2012	\$3.00	\$3.00	\$3.00	\$3.00	\$3.00
CCR&R 2014	\$3.50	\$3.25	\$3.00	\$3.00	\$3.00
<b>Large Home-based Monthly<sup>c</sup></b>					
<i>50<sup>th</sup> Percentile<sup>a</sup></i>					
CCR&R 2000	\$524	\$450	\$400	\$310	-
CCR&R 2002	\$524	\$475	\$420	\$350	\$327
CCR&R 2004	\$600	\$500	\$440	\$325	\$400
CCR&R 2006	\$525	\$500	\$460	\$320	\$450
CCR&R 2008	\$600	\$550	\$545	\$375	\$500
CCR&R 2010	\$700	\$675	\$575	\$400	\$500
CCR&R 2012	\$750	\$700	\$600	\$450	\$500
CCR&R 2014	\$855	\$760	\$675	\$500	\$550

Table 9 (continued)

	Infant	Toddler	Preschool Age	School Age School Year	School Age Summer
<b>Large Home-based Monthly (continued)</b>					
<i>75<sup>th</sup> Percentile</i>					
CCR&R 2000	\$650	\$625	\$525	\$390	-
CCR&R 2002	\$655	\$651	\$525	\$350	\$400
CCR&R 2004	\$700	\$650	\$550	\$400	\$550
CCR&R 2006	\$700	\$660	\$600	\$395	\$525
CCR&R 2008	\$800	\$745	\$650	\$450	\$565
CCR&R 2010	\$880	\$800	\$700	\$500	\$600
CCR&R 2012	\$900	\$875	\$750	\$600	\$600
CCR&R 2014	\$960	\$910	\$810	\$620	\$650
<b>Center Care Monthly</b>					
<i>50<sup>th</sup> Percentile<sup>a</sup></i>					
CCR&R 1994	\$475	\$455	\$330	\$200	-
CCR&R 2000	\$540	\$525	\$410	\$235	\$325
CCR&R 2002	\$610	\$610	\$475	\$250	\$490
CCR&R 2004	\$675	\$670	\$510	\$255	\$510
CCR&R 2006	\$749	\$751	\$540	\$295	\$539
CCR&R 2008	\$828	\$820	\$625	\$328	\$600
CCR&R 2010	\$895	\$866	\$690	\$335	\$600
CCR&R 2012	\$940	\$922	\$705	\$360	\$550
CCR&R 2014	\$997	\$998	\$740	\$394	\$600
<i>75<sup>th</sup> Percentile</i>					
CCR&R 1994	\$550	\$544	\$383	\$285	-
Survey 1999 <sup>b</sup>	\$584	\$571	\$440	\$252	-
CCR&R 2000	\$645	\$640	\$495	\$295	\$370
CCR&R 2002	\$750	\$745	\$565	\$305	\$535
CCR&R 2004	\$828	\$820	\$625	\$315	\$600
CCR&R 2006	\$865	\$865	\$667	\$395	\$666
CCR&R 2008	\$935	\$938	\$737	\$410	\$700
CCR&R 2010	\$1,044	\$998	\$807	\$425	\$718
CCR&R 2012	\$1,121	\$1,081	\$850	\$419	\$700
CCR&R 2014	\$1,219	\$1,200	\$890	\$477	\$779

<sup>a</sup> 50<sup>th</sup> percentile statewide prices were not available for the 1999 survey. <sup>b</sup> Unweighted facility prices. <sup>c</sup> Prices for large home-based care were not separated out until the 2000 Market Price Study.

Similar data were not available for all years, thus to facilitate comparison across years, Table 9 utilized the following definitions and data:

- “CCR&R” refers to data obtained in 1994 (5,889 providers), 2000 (6,504 providers), 2002 (6,308 providers), 2004 (6,232), 2006 (5,882), 2008 (5,597), 2010 (5,272), 2012 (4,924), and 2014 (4,321) market price studies using price data given by facilities to their local CCR&R. “Survey 1999” refers to data collected from a random sample of 1,201 CCR&R enrolled providers, interviewed by telephone.

- Large home-based care prices were not separated out from the other types of care until the 2000 Market Price Study.
- Child care slot prices are shown for 1994, 2000, 2002, 2004, 2006, 2008, 2010, 2012 and 2014 CCR&R studies, only facility data were available in 1999. Use of slot data facilitates the comparison of prices in those nine years.
- For 1999 telephone survey, only the 75<sup>th</sup> percentile statewide prices for child care facilities (not weighted by capacity/child care slot prices) are available.
- Hourly data is shown for small home-based care; monthly prices are shown for center and large home-based care. (The majority of small home-based facilities charge on an hourly basis for full-time care; most centers and large home-based facilities charge by the month).

Although the complexity of the market and differences in data collection noted above challenge comparisons, some patterns in statewide child care prices are apparent from a review of Table 9.

- ***From 1994 to 2014, statewide prices rose for all ages and types of care.***
- ***From 1994 to 2014, the percentage increase in statewide prices was greater in center care than in small home-based care. The comparison for large home-based care is more complicated because we did not analyze their prices separately until 2000.***

For example, based on the 75<sup>th</sup> percentile of prices for toddler care:

- ✓ CCR&R reported hourly prices for small home-based, toddler care rose from \$1.75 (1994) to \$3.25 (2014), an increase of 86%. Compared to 2012 CCR&R data, 2014 price data increased by 8% for small home-based, toddler care.
- ✓ CCR&R reported monthly prices for center, toddler care rose from \$544 (1994) to \$1,200 (2014), a total rise of \$656 per month or 121%.
- ✓ CCR&R reported monthly prices for large home-based, toddler care rose from \$625 (2000) to \$910 (2014), an increase of 46%. Note the difference in time periods. The percentage increases for center and small home-based prices happened over 20 years whereas the percentage increase for large home-based happened over only 14 years.
- ✓ Compared to 2012 CCR&R data, 2014 price data indicates a 11% increase in center care monthly prices for toddlers at the 75th percentile (from \$1,081 in 2012 to \$1,200 in 2014), and a 4% increase in large home-based monthly prices for toddlers (from \$875 in 2012 to \$910 in 2014).
- ***After some stagnation in prices between 2008 and 2012, small home-based infant and toddler prices increased in 2014.***

## Conclusions

***Child care prices vary across the state, with three types of markets for small home-based care and four types of markets for centers and large home-based care.***

The market price study validates the existence of three different small home-based care and four different center and large home based care types of markets in Oregon. The clusters were produced using an alternative statistical method that looks for price clusters that occur in the data and provides a systematic way to find the optimal natural breaks between clusters. Recent analyses of prices (2010, 2012, and 2014) indicated changes in how providers were pricing services and suggested that the three rate areas used in past studies no longer accurately captured how prices now are distributed across the state. Guidance from a national study on market price studies was used to guide the decision on this alternative method. Overall, the cluster analysis showed the child care prices to be lower in rural areas of the state and higher in the Portland metropolitan area, parts of the Mid-Willamette Valley, and parts of Deschutes, Hood River, Lincoln and Jackson counties.

***CCR&R data continues to provide a reliable and cost-effective source of data for statewide market price studies.***

The statewide CCR&R database remains the most feasible source of data for the child care market price studies. First, the database is sufficiently large and comprehensive to support analysis of statewide market prices. Second, it is representative of the child care priced market. Third, it is a convenient, inexpensive, and accessible data source. Finally, the CCR&Rs continue to maintain a high standard for completeness and currency of both price and desired capacity data.

***Prices should continue to be reported for both child care facilities and slots. Analysis should be based on slots since this most accurately represents what families experience when purchasing care.***

Analysis demonstrated non-systematic differences between facility prices and child care slot (weighted) prices at the 75<sup>th</sup> percentile. Thus, either could be used to represent prices of care. However, child care slots are believed to most accurately represent the prices available to consumers in the community, and are recommended as the preferred method to report price data.

***CCR&Rs should continue to collect price information in the mode(s) that reflect how facilities charge.***

The prices for the year 2014 market price study were reported for four independent, non-equivalent price samples. Having only one common mode of reporting prices would simplify reporting and facilitate comparison of prices. However, in reality, facilities charge in four different modes (hourly, daily, weekly, monthly) that represent different child care markets and should be reflected in the database and in the market price report.

***Analysis of the predominant mode (hourly, daily, weekly, monthly) used by facilities to charge parents identified hourly as the most common mode for small home-based care and monthly for center and large home-based care.***

Identifying the predominant modes facilities charge by type of care is important not only for understanding the child care market but also because it produces the largest sample size in which to conduct the geographic price analysis. For small home-based care, hourly continues to be the dominate mode facilities used to charge parents for all age groups. For center and large home-based care, monthly is the most common mode reported by facilities for all age groups. It will be important to continue to track these trends in future studies.

## References

1. Emlen, Arthur C. *Analysis of Child Care Rates in Oregon*. Report for Adult & Family Services Division, Oregon Department of Human Resources. Portland, OR: Arthur Emlen & Associates, Inc. in cooperation with the Regional Research Institute for Human Services, Portland State University, March, 1990.
2. Emlen, Arthur C. *The 1992 Oregon Child-Care Rates*. Report for Adult & Family Services Division, Oregon Department of Human Resources. Portland, OR: Arthur Emlen & Associates, Inc. in cooperation with the Regional Research Institute for Human Services, Portland State University, September 30, 1992.
3. Emlen, Arthur C. *Market Rate, 1994: Sampling the Price of Child Care in Oregon*. Report for Adult and Family Services Division, Oregon Department of Human Resources. Portland, OR: Arthur Emlen & Associates, Inc. in cooperation with the Regional Research Institute for Human Services, Portland State University, April, 1995.
4. Tvedt, Karen, & Emlen, Arthur C. *1999 Oregon Child Care Market Rate Study*. Report for Adult and Family Services Division, Oregon Department of Human Resources. Portland, OR: Regional Research Institute for Human Services, Portland State University, March, 1999.
5. Grobe, Deana, & Pratt, Clara C. *2000 Oregon Child Care Market Rate Study*. Report for Adult and Family Services Division, Oregon Department of Human Resources. Corvallis, OR: Family Policy Program, Oregon State University, September, 2000.
6. Grobe, Deana, Pratt, Clara C., & Weber, Roberta B. *2002 Oregon Child Care Market Rate Study*. Report for Oregon Department of Human Services. Corvallis, OR: Family Policy Program, Oregon State University, January, 2003.
7. Grobe, Deana, Pratt, Clara C., & Weber, Roberta B. *2004 Oregon Child Care Market Rate Study*. Report for Oregon Department of Human Services. Corvallis, OR: Family Policy Program, Oregon State University, August, 2004.
8. Grobe, Deana, Weber, Roberta B., & Pratt, Clara C. *2006 Oregon Child Care Market Rate Study*. Report for Oregon Department of Human Services. Corvallis, OR: Family Policy Program, Oregon State University, August, 2006.
9. Grobe, Deana, & Weber, Roberta B. *2008 Oregon Child Care Market Rate Study*. Report for Oregon Department of Human Services. Corvallis, OR: Family Policy Program, Oregon State University, August, 2008.
10. Grobe, Deana, & Weber, Roberta B. *2010 Oregon Child Care Market Rate Study*. Report for Oregon Department of Human Services. Corvallis, OR: Family Policy Program, Oregon State University, October, 2010.

## References

11. Grobe, Deana, & Weber, Roberta B. *2012 Oregon Child Care Market Rate Study*. Report for Oregon Department of Human Services. Corvallis, OR: Family Policy Program, Oregon State University, October, 2012.
12. Grobe, Deana, Weber, Roberta B., Davis, Elizabeth, E., Kreader, J. Lee, & Pratt, Clara C. *Study of Market Prices: Validating Child Care Market Rate Surveys*. Technical Report. Corvallis, OR: Family Policy Program, Oregon State University, September, 2008.
13. Pratt, C., Katzev, A., Ozretich, R. Henderson, T, & McGuigan, W. *Building Results III: Measuring Outcomes for Oregon's Children, Youth, and Families*. Prepared for The Oregon Commission on Children and Families, January, 1998.
14. Child Care and Development Fund; Final Rule. 45 CFR Parts 98 and 99, § 98.43, Comments. July 24, 1998.

## Appendices





## Glossary

**Age of care**—age of child receiving care; the four different age groups are *infant* (0-24 months), *toddler* (2-3 years old), *preschool age* (3 - 5 years old), and *school age* (5 years old and up)

**Child care facility prices**—facility prices for care as reported to their local CCR&R

**Child care slots**—represents the cost per child care slot

**Total facility capacity**—maximum number of children desired by the facility

**Total age group capacity**—total capacity for a given age group (infants, toddlers, preschool age, school age school year, or school age summer)

**Cost of care**—facilities' costs to provide child care that is often greater than the price charged to parents

**Family copay**—the portion of the child care fee paid by parents who are receiving ERDC subsidies

**Market price or prices**—prices that are set in the priced child care market by facilities

**Priced child care market**—Facilities within the priced child care market have two characteristics: (1) they charge parents a price, and (2) the price is established through an arm's length transaction. In an arm's length transaction the buyer and seller do not have a prior relationship or shared membership that is likely to affect the price charged. The priced market does *not* include facilities who limit their care to persons they know, as is commonly the case with family or friend caregivers.

**Pricing modes**—the various ways prices can be reported: hourly, daily, weekly, monthly

**75<sup>th</sup> Percentile**—the price level at which 75% of child care slots may be purchased

**Licensed rate maximums**—the DHS maximum subsidy rates that have been in effect since October and November 2013

**Type of care**—care setting or facility

**Small home-based care**—provided in the provider's home; small group of children; relative or non-relative provider

**Center care**—full or part-time care and education; provided by caregivers/teachers always located in building other than home

**Large home-based care**—one or more caregivers; no more than 16 children at any one time; care provided in home setting

**B STATEWIDE PRICES**

**2014 Prices for Small Home-based Care**

	CHILD CARE FACILITIES (Unweighted)				CHILD CARE SLOTS (Weighted by Total Capacity)			
	Hourly	Daily	Weekly	Monthly	Hourly	Daily	Weekly	Monthly
<b>Infant</b>	N=1,393	N=593	N=213	N=837	N=9,051	N=4,194	N=1,509	N=5,824
90 <sup>th</sup>	\$4.00	\$40	\$200	\$675	\$4.00	\$40	\$200	\$675
75 <sup>th</sup>	\$3.50	\$35	\$175	\$600	\$3.50	\$35	\$175	\$600
60 <sup>th</sup>	\$3.00	\$30	\$150	\$545	\$3.00	\$30	\$150	\$550
50 <sup>th</sup>	\$3.00	\$30	\$145	\$500	\$3.00	\$30	\$150	\$500
25 <sup>th</sup>	\$2.50	\$25	\$125	\$450	\$2.50	\$25	\$125	\$450
10 <sup>th</sup>	\$2.50	\$20	\$100	\$400	\$2.50	\$20	\$100	\$400
<b>Toddler</b>	N=1,507	N=616	N=239	N=879	N=9,844	N=4,388	N=1,673	N=6,095
90 <sup>th</sup>	\$4.00	\$40	\$180	\$650	\$4.00	\$37	\$185	\$650
75 <sup>th</sup>	\$3.00	\$35	\$150	\$600	\$3.25	\$32	\$150	\$600
60 <sup>th</sup>	\$3.00	\$30	\$150	\$504	\$3.00	\$30	\$150	\$525
50 <sup>th</sup>	\$3.00	\$30	\$135	\$500	\$3.00	\$30	\$140	\$500
25 <sup>th</sup>	\$2.50	\$25	\$120	\$450	\$2.50	\$25	\$122	\$450
10 <sup>th</sup>	\$2.20	\$20	\$100	\$400	\$2.25	\$20	\$100	\$400
<b>Preschool Age</b>	N=1,565	N=634	N=244	N=897	N=10,171	N=4,479	N=1,722	N=6,207
90 <sup>th</sup>	\$3.85	\$35	\$175	\$600	\$3.75	\$35	\$175	\$600
75 <sup>th</sup>	\$3.00	\$30	\$150	\$550	\$3.00	\$30	\$150	\$550
60 <sup>th</sup>	\$3.00	\$30	\$145	\$500	\$3.00	\$30	\$150	\$500
50 <sup>th</sup>	\$3.00	\$27	\$125	\$475	\$3.00	\$27	\$130	\$480
25 <sup>th</sup>	\$2.50	\$25	\$119	\$425	\$2.50	\$25	\$120	\$425
10 <sup>th</sup>	\$2.00	\$20	\$100	\$400	\$2.00	\$20	\$100	\$400
<b>School Age School Year</b>	N=1,398	N=372	N=129	N=395	N=9,300	N=2,817	N=967	N=2,842
90 <sup>th</sup>	\$4.00	\$35	\$150	\$595	\$4.00	\$35	\$150	\$595
75 <sup>th</sup>	\$3.00	\$30	\$125	\$500	\$3.00	\$30	\$125	\$500
60 <sup>th</sup>	\$3.00	\$25	\$125	\$450	\$3.00	\$25	\$125	\$450
50 <sup>th</sup>	\$3.00	\$25	\$114	\$413	\$3.00	\$25	\$110	\$421
25 <sup>th</sup>	\$2.50	\$18	\$100	\$350	\$2.50	\$18	\$100	\$350
10 <sup>th</sup>	\$2.00	\$13	\$75	\$250	\$2.00	\$13	\$75	\$250
<b>School Age Summer</b>	N=1,171	N=422	N=158	N=604	N=7,632	N=3,104	N=1,164	N=4,272
90 <sup>th</sup>	\$3.75	\$35	\$150	\$600	\$3.75	\$35	\$175	\$600
75 <sup>th</sup>	\$3.00	\$30	\$140	\$500	\$3.00	\$30	\$150	\$500
60 <sup>th</sup>	\$3.00	\$27	\$125	\$495	\$3.00	\$28	\$125	\$500
50 <sup>th</sup>	\$2.90	\$25	\$125	\$450	\$3.00	\$25	\$125	\$450
25 <sup>th</sup>	\$2.50	\$22	\$100	\$400	\$2.50	\$24	\$100	\$400
10 <sup>th</sup>	\$2.00	\$20	\$90	\$375	\$2.00	\$20	\$90	\$380

2014 Prices for Center Care

	CHILD CARE FACILITIES (Unweighted)				CHILD CARE SLOTS (Weighted by Total Capacity)			
	Hourly	Daily	Weekly	Monthly	Hourly	Daily	Weekly	Monthly
<b>Infant</b>	N=33	N=26	N=52	N=228	N=259	N=219	N=516	N=2,220
90 <sup>th</sup>	\$8.50	\$57	\$319	\$1,335	\$12.00	\$80	\$321	\$1,350
75 <sup>th</sup>	\$5.50	\$50	\$294	\$1,130	\$7.25	\$50	\$295	\$1,219
60 <sup>th</sup>	\$4.95	\$45	\$273	\$998	\$5.50	\$50	\$281	\$1,085
50 <sup>th</sup>	\$4.50	\$43	\$248	\$934	\$5.00	\$45	\$255	\$997
25 <sup>th</sup>	\$3.60	\$37	\$198	\$707	\$4.00	\$38	\$220	\$730
10 <sup>th</sup>	\$3.00	\$30	\$145	\$600	\$3.25	\$31	\$160	\$615
<b>Toddler</b>	N=42	N=35	N=57	N=288	N=363	N=255	N=974	N=3,135
90 <sup>th</sup>	\$8.00	\$54	\$318	\$1,250	\$6.50	\$52	\$326	\$1,349
75 <sup>th</sup>	\$6.25	\$45	\$288	\$1,066	\$6.25	\$45	\$300	\$1,200
60 <sup>th</sup>	\$4.95	\$41	\$255	\$960	\$5.00	\$45	\$288	\$1,065
50 <sup>th</sup>	\$4.05	\$38	\$230	\$875	\$4.95	\$42	\$280	\$998
25 <sup>th</sup>	\$3.50	\$32	\$175	\$655	\$3.85	\$35	\$200	\$744
10 <sup>th</sup>	\$2.75	\$26	\$140	\$550	\$3.25	\$30	\$160	\$610
<b>Preschool Age</b>	N=77	N=48	N=69	N=406	N=1,732	N=807	N=2,872	N=11,712
90 <sup>th</sup>	\$7.00	\$65	\$240	\$1,000	\$7.00	\$70	\$246	\$1,060
75 <sup>th</sup>	\$5.00	\$40	\$210	\$850	\$5.95	\$40	\$233	\$890
60 <sup>th</sup>	\$4.00	\$35	\$199	\$750	\$4.40	\$38	\$208	\$801
50 <sup>th</sup>	\$4.00	\$35	\$185	\$695	\$4.00	\$35	\$200	\$740
25 <sup>th</sup>	\$3.25	\$29	\$145	\$555	\$3.25	\$30	\$170	\$576
10 <sup>th</sup>	\$2.63	\$23	\$120	\$450	\$2.75	\$26	\$133	\$498
<b>School Age Year</b>	N=69	N=47	N=59	N=230	N=1,430	N=1,303	N=2,737	N=7,409
90 <sup>th</sup>	\$9.25	\$45	\$148	\$644	\$9.25	\$40	\$169	\$660
75 <sup>th</sup>	\$5.00	\$38	\$134	\$500	\$6.00	\$39	\$133	\$477
60 <sup>th</sup>	\$4.60	\$33	\$118	\$417	\$4.95	\$35	\$115	\$417
50 <sup>th</sup>	\$4.00	\$30	\$115	\$395	\$4.50	\$32	\$90	\$394
25 <sup>th</sup>	\$3.50	\$21	\$78	\$300	\$3.90	\$20	\$50	\$312
10 <sup>th</sup>	\$2.75	\$15	\$50	\$224	\$3.00	\$14	\$50	\$224
<b>School Age Summer</b>	N=50	N=39	N=75	N=157	N=1,313	N=1,519	N=3,483	N=5,287
90 <sup>th</sup>	\$9.63	\$62	\$233	\$910	\$9.25	\$62	\$237	\$1,025
75 <sup>th</sup>	\$4.75	\$40	\$200	\$725	\$4.75	\$40	\$210	\$779
60 <sup>th</sup>	\$4.00	\$35	\$186	\$620	\$4.00	\$35	\$195	\$660
50 <sup>th</sup>	\$4.00	\$32	\$170	\$585	\$4.00	\$32	\$175	\$600
25 <sup>th</sup>	\$3.00	\$23	\$130	\$495	\$3.15	\$23	\$135	\$495
10 <sup>th</sup>	\$2.63	\$20	\$100	\$435	\$2.50	\$20	\$91	\$445

**B STATEWIDE PRICES**

**2014 Prices for Large Home-based Care**

	CHILD CARE FACILITIES (Unweighted)				CHILD CARE SLOTS (Weighted by Total Capacity)			
	Hourly	Daily	Weekly	Monthly	Hourly	Daily	Weekly	Monthly
<b>Infant</b>	N=82	N=114	N=48	N=239	N=195	N=257	N=116	N=602
90 <sup>th</sup>	\$5.50	\$50	\$225	\$1,050	\$5.50	\$54	\$250	\$1,230
75 <sup>th</sup>	\$4.25	\$40	\$200	\$900	\$4.25	\$45	\$215	\$960
60 <sup>th</sup>	\$4.00	\$40	\$190	\$860	\$3.88	\$40	\$200	\$900
50 <sup>th</sup>	\$3.50	\$35	\$175	\$775	\$3.50	\$36	\$183	\$855
25 <sup>th</sup>	\$3.00	\$30	\$135	\$550	\$3.00	\$30	\$150	\$600
10 <sup>th</sup>	\$2.50	\$25	\$125	\$485	\$2.50	\$25	\$125	\$500
<b>Toddler</b>	N=103	N=137	N=63	N=276	N=137	N=221	N=138	N=578
90 <sup>th</sup>	\$5.00	\$45	\$225	\$1,000	\$5.50	\$50	\$275	\$1,230
75 <sup>th</sup>	\$4.50	\$40	\$195	\$900	\$4.00	\$44	\$225	\$910
60 <sup>th</sup>	\$4.00	\$35	\$175	\$750	\$3.60	\$40	\$190	\$890
50 <sup>th</sup>	\$3.60	\$35	\$175	\$700	\$3.25	\$36	\$175	\$760
25 <sup>th</sup>	\$3.00	\$30	\$135	\$532	\$3.00	\$30	\$150	\$550
10 <sup>th</sup>	\$2.50	\$25	\$125	\$450	\$2.50	\$25	\$125	\$500
<b>Preschool</b>	N=111	N=141	N=61	N=308	N=493	N=685	N=326	N=1707
<b>Age</b>								
90 <sup>th</sup>	\$5.00	\$40	\$200	\$925	\$5.00	\$44	\$200	\$950
75 <sup>th</sup>	\$4.25	\$35	\$180	\$789	\$4.25	\$35	\$175	\$810
60 <sup>th</sup>	\$3.75	\$35	\$165	\$700	\$3.75	\$35	\$165	\$750
50 <sup>th</sup>	\$3.50	\$30	\$155	\$650	\$3.50	\$32	\$155	\$675
25 <sup>th</sup>	\$3.00	\$27	\$135	\$500	\$3.00	\$26	\$135	\$500
10 <sup>th</sup>	\$2.50	\$25	\$125	\$450	\$2.50	\$25	\$125	\$450
<b>School Age</b>	N=87	N=78	N=23	N=102	N=517	N=420	N=125	N=565
<b>Year</b>								
90 <sup>th</sup>	\$5.00	\$37	\$163	\$655	\$5.00	\$35	\$180	\$650
75 <sup>th</sup>	\$4.00	\$30	\$150	\$650	\$4.00	\$30	\$140	\$620
60 <sup>th</sup>	\$3.70	\$28	\$125	\$600	\$4.00	\$30	\$125	\$550
50 <sup>th</sup>	\$3.25	\$25	\$125	\$500	\$3.50	\$25	\$125	\$500
25 <sup>th</sup>	\$3.00	\$20	\$100	\$400	\$3.00	\$20	\$100	\$400
10 <sup>th</sup>	\$2.50	\$15	\$95	\$300	\$2.50	\$15	\$100	\$300
<b>School Age Summer</b>	N=72	N=82	N=31	N=144	N=464	N=526	N=199	N=956
90 <sup>th</sup>	\$4.50	\$40	\$180	\$690	\$4.50	\$40	\$185	\$690
75 <sup>th</sup>	\$4.00	\$35	\$163	\$650	\$4.00	\$35	\$163	\$650
60 <sup>th</sup>	\$3.50	\$30	\$150	\$590	\$3.50	\$32	\$150	\$600
50 <sup>th</sup>	\$3.00	\$30	\$140	\$550	\$3.00	\$30	\$140	\$550
25 <sup>th</sup>	\$2.90	\$25	\$125	\$480	\$3.00	\$25	\$125	\$490
10 <sup>th</sup>	\$2.50	\$20	\$115	\$400	\$2.50	\$20	\$115	\$400

2014 Prices by 2014 Clusters for Small Home-based Care Slots

	INFANT			TODDLER			PRESCHOOL AGE		
	Cluster 1	Cluster 2	Cluster 3	Cluster 1	Cluster 2	Cluster 3	Cluster 1	Cluster 2	Cluster 3
<b>Hourly</b>	N=1,038	N=6,860	N=1,153	N=1,046	N=7,553	N=1,245	N=1,086	N=7,792	N=1,293
90th	\$3.00	\$4.00	\$5.00	\$3.00	\$3.80	\$5.00	\$2.75	\$3.50	\$5.00
75th	\$2.75	\$3.50	\$4.00	\$2.50	\$3.00	\$4.00	\$2.50	\$3.00	\$4.00
60th	\$2.50	\$3.00	\$3.75	\$2.50	\$3.00	\$3.50	\$2.50	\$3.00	\$3.50
50th	\$2.50	\$3.00	\$3.50	\$2.50	\$3.00	\$3.50	\$2.50	\$3.00	\$3.00
25th	\$2.50	\$2.50	\$3.00	\$2.25	\$2.50	\$3.00	\$2.00	\$2.50	\$3.00
10th	\$2.05	\$2.50	\$3.00	\$2.00	\$2.25	\$3.00	\$2.00	\$2.00	\$2.50
<b>Monthly</b>	N=691	N=4,179	N=954	N=683	N=4,369	N=1,043	N=728	N=4,439	N=1,040
90th	\$550	\$650	\$796	\$500	\$625	\$750	\$500	\$600	\$700
75th	\$500	\$600	\$650	\$480	\$600	\$650	\$475	\$550	\$620
60th	\$480	\$550	\$600	\$450	\$504	\$600	\$450	\$500	\$600
50th	\$450	\$500	\$600	\$425	\$500	\$600	\$425	\$475	\$550
25th	\$400	\$450	\$530	\$400	\$450	\$500	\$400	\$425	\$500
10th	\$400	\$425	\$493	\$350	\$400	\$450	\$300	\$400	\$440

	SCHOOL AGE SCHOOL YEAR			SCHOOL AGE SUMMER		
	Cluster 1	Cluster 2	Cluster 3	Cluster 1	Cluster 2	Cluster 3
<b>Hourly</b>	N=820	N=7,232	N=1,248	N=885	N=5,765	N=982
90th	\$3.00	\$3.50	\$5.00	\$3.00	\$3.50	\$5.00
75th	\$2.50	\$3.00	\$4.00	\$2.50	\$3.00	\$4.00
60th	\$2.50	\$3.00	\$3.50	\$2.50	\$3.00	\$3.50
50th	\$2.50	\$3.00	\$3.00	\$2.50	\$3.00	\$3.00
25th	\$2.00	\$2.50	\$3.00	\$2.00	\$2.50	\$3.00
10th	\$2.00	\$2.00	\$2.50	\$2.00	\$2.00	\$2.50
<b>Monthly</b>	N=303	N=2,019	N=520	N=538	N=3,024	N=710
90th	\$450	\$600	\$600	\$500	\$600	\$650
75th	\$450	\$500	\$525	\$450	\$500	\$600
60th	\$425	\$450	\$500	\$435	\$496	\$550
50th	\$400	\$421	\$450	\$400	\$450	\$500
25th	\$350	\$350	\$360	\$390	\$400	\$460
10th	\$300	\$250	\$300	\$300	\$395	\$400

**C 2014 CLUSTER PRICES**

**2014 Prices by 2014 Clusters for Center Care Slots**

	INFANT				TODDLER				PRESCHOOL AGE			
	Cluster 1	Cluster 2	Cluster 3	Cluster 4	Cluster 1	Cluster 2	Cluster 3	Cluster 4	Cluster 1	Cluster 2	Cluster 3	Cluster 4
	N=129	N=46	N=75	N=9	N=196	N=75	N=75	N=17	N=607	N=611	N=232	N=282
<b>Hourly</b>												
90th	\$5.50	\$7.00	\$12.00	\$15.00	\$5.50	\$7.00	\$12.00	\$7.00	\$4.75	\$5.95	\$10.25	\$6.00
75th	\$5.00	\$6.00	\$12.00	\$15.00	\$5.00	\$6.50	\$6.25	\$6.50	\$4.00	\$4.65	\$10.25	\$6.00
60th	\$4.50	\$5.25	\$8.50	\$15.00	\$4.10	\$6.00	\$6.25	\$6.50	\$3.25	\$4.20	\$8.00	\$6.00
50th	\$4.00	\$5.25	\$7.25	\$15.00	\$4.00	\$5.00	\$6.25	\$6.50	\$3.25	\$4.00	\$8.00	\$6.00
25th	\$3.52	\$4.95	\$7.25	\$7.00	\$3.50	\$4.50	\$6.25	\$6.50	\$3.00	\$3.90	\$4.93	\$5.50
10th	\$3.00	\$2.75	\$4.50	\$7.00	\$2.75	\$3.50	\$4.00	\$6.50	\$2.75	\$2.75	\$3.00	\$5.00
<b>Monthly</b>												
90th	\$710	\$940	\$1,329	\$1,406	\$690	\$914	\$1,290	\$1,406	\$590	\$710	\$1,053	\$1,160
75th	\$699	\$865	\$1,166	\$1,350	\$610	\$885	\$1,166	\$1,349	\$545	\$670	\$887	\$1,065
60th	\$625	\$757	\$1,099	\$1,300	\$593	\$797	\$1,090	\$1,255	\$495	\$620	\$850	\$1,010
50th	\$600	\$730	\$1,037	\$1,250	\$575	\$740	\$1,050	\$1,219	\$453	\$585	\$800	\$930
25th	\$500	\$655	\$959	\$1,121	\$500	\$650	\$950	\$1,050	\$400	\$526	\$710	\$850
10th	\$300	\$610	\$817	\$1,050	\$300	\$600	\$800	\$952	\$248	\$500	\$602	\$724

**SCHOOL AGE SCHOOL YEAR**

	SCHOOL AGE SCHOOL YEAR			
	Cluster 1	Cluster 2	Cluster 3	Cluster 4
<b>Hourly</b>				
90th	\$4.95	\$5.95	\$10.25	\$15.00
75th	\$4.00	\$4.75	\$9.25	\$6.00
60th	\$4.00	\$4.40	\$8.00	\$6.00
50th	\$3.50	\$4.40	\$7.00	\$6.00
25th	\$3.20	\$4.00	\$5.00	\$4.50
10th	\$2.50	\$3.50	\$4.50	\$4.50
<b>Monthly</b>				
90th	\$445	\$500	\$700	\$850
75th	\$364	\$394	\$540	\$475
60th	\$360	\$334	\$425	\$424
50th	\$360	\$280	\$409	\$417
25th	\$160	\$285	\$255	\$360
10th	\$160	\$200	\$255	\$345

**SCHOOL AGE SUMMER**

	SCHOOL AGE SUMMER			
	Cluster 1	Cluster 2	Cluster 3	Cluster 4
<b>Hourly</b>				
90th	\$4.00	\$6.00	\$10.00	\$7.54
75th	\$3.52	\$5.95	\$10.00	\$6.00
60th	\$3.25	\$4.40	\$9.25	\$4.50
50th	\$3.15	\$4.40	\$9.25	\$4.50
25th	\$2.75	\$4.00	\$9.25	\$4.00
10th	\$2.25	\$3.50	\$4.00	\$4.00
<b>Monthly</b>				
90th	\$545	\$695	\$864	\$1,099
75th	\$508	\$632	\$779	\$1,060
60th	\$495	\$595	\$737	\$930
50th	\$467	\$570	\$685	\$850
25th	\$280	\$400	\$450	\$395
10th	\$280	\$320	\$350	\$300

2014 Prices and 2014 Clusters for Large Home-based Care

	INFANT				TODDLER				PRESCHOOL AGE			
	Cluster 1	Cluster 2	Cluster 3	Cluster 4	Cluster 1	Cluster 2	Cluster 3	Cluster 4	Cluster 1	Cluster 2	Cluster 3	Cluster 4
	N=52	N=68	N=60	N=15	N=60	N=47	N=16	N=14	N=166	N=160	N=127	N=40
<b>Hourly</b>												
90th	\$3.50	\$4.00	\$6.50	\$10.00	\$3.75	\$5.00	\$5.00	\$10.00	\$3.60	\$4.00	\$5.00	\$10.00
75th	\$3.50	\$4.00	\$5.00	\$6.50	\$3.50	\$3.75	\$4.75	\$5.50	\$3.50	\$4.00	\$5.00	\$10.00
60th	\$3.00	\$3.00	\$5.00	\$5.75	\$3.00	\$3.67	\$4.25	\$5.50	\$3.00	\$3.70	\$5.00	\$5.00
50th	\$3.00	\$3.00	\$4.25	\$5.50	\$3.00	\$3.00	\$4.13	\$5.50	\$3.00	\$3.50	\$4.38	\$5.00
25th	\$2.75	\$3.00	\$3.88	\$5.50	\$2.58	\$2.75	\$3.63	\$5.50	\$2.50	\$2.75	\$4.00	\$5.00
10th	\$2.50	\$2.50	\$3.00	\$4.00	\$2.50	\$2.50	\$3.25	\$4.00	\$2.50	\$2.50	\$3.00	\$3.00
<b>Monthly</b>												
90th	\$585	\$900	\$1,000	\$1,300	\$550	\$850	\$920	\$1,300	\$550	\$785	\$870	\$1,100
75th	\$560	\$850	\$900	\$1,230	\$532	\$725	\$900	\$1,230	\$525	\$650	\$785	\$975
60th	\$550	\$775	\$900	\$1,230	\$525	\$600	\$900	\$1,200	\$500	\$550	\$750	\$900
50th	\$525	\$650	\$860	\$1,100	\$525	\$550	\$850	\$1,155	\$480	\$525	\$700	\$845
25th	\$450	\$550	\$750	\$900	\$475	\$500	\$675	\$900	\$425	\$500	\$600	\$780
10th	\$400	\$480	\$600	\$860	\$440	\$450	\$550	\$745	\$400	\$450	\$500	\$680

SCHOOL AGE SCHOOL YEAR

	SCHOOL AGE SUMMER			
	Cluster 1	Cluster 2	Cluster 3	Cluster 4
	N=128	N=199	N=176	N=14
<b>Hourly</b>				
90th	\$3.75	\$5.00	\$7.00	\$5.00
75th	\$3.50	\$4.00	\$4.50	\$5.00
60th	\$3.50	\$4.00	\$4.30	\$4.50
50th	\$3.00	\$3.70	\$4.00	\$4.50
25th	\$3.00	\$3.00	\$3.00	\$3.00
10th	\$2.50	\$2.50	\$2.64	\$3.00
<b>Monthly</b>				
90th	\$600	\$655	\$688	\$800
75th	\$510	\$600	\$650	\$650
60th	\$450	\$524	\$600	\$600
50th	\$450	\$490	\$600	\$575
25th	\$400	\$275	\$450	\$450
10th	\$300	\$220	\$365	\$450

SCHOOL AGE SUMMER

	SCHOOL AGE SUMMER			
	Cluster 1	Cluster 2	Cluster 3	Cluster 4
	N=123	N=162	N=158	N=21
90th	\$3.50	\$4.50	\$4.50	\$5.00
75th	\$3.50	\$4.00	\$4.00	\$5.00
60th	\$3.00	\$4.00	\$4.00	\$4.50
50th	\$3.00	\$3.75	\$3.25	\$4.50
25th	\$2.50	\$2.80	\$3.00	\$3.00
10th	\$2.50	\$2.50	\$2.64	\$3.00
<b>Monthly</b>				
90th	\$550	\$690	\$693	\$900
75th	\$510	\$600	\$650	\$750
60th	\$500	\$550	\$620	\$650
50th	\$450	\$540	\$600	\$650
25th	\$400	\$500	\$500	\$600
10th	\$378	\$450	\$480	\$588

## D MEDIAN COUNTY PRICES

2014 Median County Prices for Toddler Care, By Type of Care and Pricing Mode

County	# of kids (slots)	Median <b>Small Home-based</b> Toddler <b>Hourly</b> Rate	# of kids (slots)	Median <b>Small Home-based</b> Toddler <b>Monthly</b> Rate	# of kids (slots)	Median <b>Center</b> Toddler <b>Monthly</b> Rate	# of kids (slots)	Median <b>Large Home-based</b> Toddler <b>Monthly</b> Rate
Baker	132	\$2.50	65	\$400	-	-	-	-
Benton	59	\$3.50	186	\$550	138	\$1,090	8	\$550
Clackamas	669	\$3.00	409	\$600	294	\$995	34	\$910
Clatsop	123	\$3.25	20	\$450	8	\$615	-	-
Columbia	120	\$3.00	37	\$500	24	\$830	4	\$450
Coos	182	\$2.75	51	\$450	40	\$610	2	\$425
Crook	30	\$2.50	31	\$425	8	\$700	2	\$400
Curry	32	\$3.00	16	\$500	-	-	-	-
Deschutes	385	\$3.00	309	\$500	192	\$728	53	\$525
Douglas	299	\$2.50	176	\$460	5	\$575	16	\$563
Gilliam	10	\$2.50	-	-	8	\$490	-	-
Grant	16	\$2.50	-	-	-	-	6	\$575
Harney	34	\$2.00	10	\$380	-	-	-	-
Hood River	63	\$3.35	36	\$600	2	\$775	11	\$835
Jackson	613	\$2.75	211	\$450	63	\$789	24	\$532
Jefferson	163	\$2.50	70	\$425	50	\$300	3	\$440
Josephine	44	\$2.88	35	\$400	61	\$575	8	\$500
Klamath	89	\$3.00	126	\$400	58	\$575	2	\$400
Lake	16	\$2.25	20	\$400	-	-	-	-
Lane	827	\$3.00	757	\$525	133	\$910	9	\$900
Lincoln	47	\$3.00	43	\$500	-	-	1	\$450
Linn	255	\$3.00	321	\$480	17	\$675	2	\$540
Malheur	171	\$2.25	98	\$400	8	\$419	2	\$340
Marion	1,197	\$2.50	1,105	\$450	226	\$622	81	\$550
Morrow	15	\$2.20	3	\$372	-	-	-	-
Multnomah	2,386	\$3.00	829	\$600	1,161	\$1,137	211	\$900
Polk	344	\$3.00	276	\$500	30	\$550	15	\$525
Sherman	10	\$3.50	-	-	-	-	-	-
Tillamook	71	\$3.00	22	\$450	2	\$479	-	-
Umatilla	359	\$2.50	219	\$480	10	\$530	-	-
Union	204	\$2.50	47	\$425	-	-	-	-
Wallowa	42	\$2.00	-	-	-	-	2	\$480
Wasco	220	\$3.00	48	\$500	-	-	-	-
Washington	751	\$3.00	586	\$600	516	\$1,066	80	\$880
Wheeler	10	\$3.25	-	-	-	-	-	-
Yamhill	265	\$3.00	177	\$500	55	\$797	28	\$550
<b>Oregon</b>	<b>9,844</b>	<b>\$3.00</b>	<b>6,095</b>	<b>\$500</b>	<b>3,135</b>	<b>\$998</b>	<b>578</b>	<b>\$760</b>

**Note:** A dash reflects no price data for toddler care by that type of care and pricing mode for a particular county.



**2014 Clusters for Oregon Cities, Counties, and Zip Codes,  
Sorted by City\***

City or Town	County	Zip Code	2014	2014
			Small Home-based Cluster	Center and Large Home-based Cluster
Adams	Umatilla	97810	1	1
Adel	Lake	97620	1	1
Adrian	Malheur	97901	1	1
Agness	Curry	97406	2	1
Albany	Linn	97321	2	2
Albany	Linn	97322	2	2
Allegany	Coos	97407	2	1
Alpine	Benton	97408	2	2
Alsea	Benton	97324	1	1
Alvadore	Lane	97409	1	1
Amity	Yamhill	97101	3	1
Antelope	Wasco	97001	2	1
Arch Cape	Clatsop	97102	1	1
Arlington	Gilliam	97812	1	1
Arock	Malheur	97902	1	1
Ashland	Jackson	97520	3	2
Ashwood	Jefferson	97711	1	1
Astoria	Clatsop	97103	2	1
Athena	Umatilla	97813	2	1
Aumsville	Marion	97325	1	1
Aurora	Marion	97002	2	1
Azalea	Douglas	97410	1	1
Baker	Baker	97814	1	1
Bandon	Coos	97411	2	1
Banks	Washington	97106	2	2
Barlow	Clackamas	97003	2	2
Bates	Grant	97817	1	1
Bay City	Tillamook	97107	2	1
Beatty	Klamath	97621	2	1
Beaver	Tillamook	97108	2	1
Beavercreek	Clackamas	97004	2	2
Beaverton	Washington	97005	2	3
Beaverton	Washington	97006	2	3
Beaverton	Washington	97007	2	3
Beaverton	Washington	97008	2	3
Beaverton	Washington	97123	2	3
Bend	Deschutes	97701	3	2
Bend	Deschutes	97702	3	2
Bend	Deschutes	97708	3	2
Bend	Deschutes	97709	3	2
Blachly	Lane	97412	1	1
Blodgett	Benton	97326	2	2
Blue River	Lane	97413	1	1
Bly	Klamath	97622	2	1
Boardman	Morrow	97818	1	1

## **E** CLUSTERS BY ZIP CODE SORTED BY CITY

City or Town	County	Zip Code	2014	2014
			Small Home-based Cluster	Center and Large Home-based Cluster
Bonanza	Klamath	97623	2	1
Boring	Clackamas	97009	2	2
Bridal Veil	Multnomah	97010	2	3
Bridgeport	Baker	97819	1	1
Brightwood	Clackamas	97011	2	2
Broadbent	Coos	97414	2	1
Brogan	Malheur	97903	1	1
Brookings	Curry	97415	2	1
Brothers	Deschutes	97712	1	1
Brownsville	Linn	97327	2	1
Burns	Harney	97720	1	1
Burnt Woods	Lincoln	97328	2	1
Butte Falls	Jackson	97522	1	1
Buxton	Washington	97109	2	2
Camas Valley	Douglas	97416	1	1
Camp Sherman	Jefferson	97730	1	1
Canby	Clackamas	97013	2	2
Cannon Beach	Clatsop	97110	2	1
Canyon City	Grant	97820	1	1
Canyonville	Douglas	97417	1	1
Carlton	Yamhill	97111	2	2
Cascade Locks	Hood River	97014	2	2
Cascadia	Linn	97329	1	1
Cave Junction	Josephine	97523	1	1
Cayuse	Umatilla	97821	1	1
Cecil	Morrow	97822	1	1
Central Point	Jackson	97502	2	2
Chemult	Klamath	97731	2	1
Cheshire	Lane	97419	1	1
Chiloquin	Klamath	97624	2	1
Christmas Valley	Lake	97641	1	1
Clackamas	Clackamas	97015	3	2
Cloverdale	Tillamook	97112	2	1
Colton	Clackamas	97017	2	2
Columbia City	Columbia	97018	2	1
Condon	Gilliam	97823	1	1
Coos Bay	Coos	97420	2	1
Coquille	Coos	97423	2	1
Corbett	Multnomah	97019	2	3
Cornelius	Washington	97113	2	2
Corvallis NW	Benton	97330	3	3
Corvallis OSU	Benton	97331	3	3
Corvallis POB	Benton	97339	3	3
Corvallis SW	Benton	97333	3	3
Cottage Grove	Lane	97424	1	2
Cove	Union	97824	1	1
Crabtree	Linn	97335	1	1
Crane	Harney	97732	1	1
Crater Lake	Klamath	97604	2	1

**CLUSTERS BY ZIP CODE SORTED BY CITY E**

City or Town	County	Zip Code	2014	2014
			Small Home-based Cluster	Center and Large Home-based Cluster
Crawfordsville	Linn	97336	2	1
Crescent Lake	Klamath	97425	2	1
Crescent	Klamath	97733	2	1
Creswell	Lane	97426	1	1
Culp Creek	Lane	97427	1	1
Culver	Jefferson	97734	1	1
Curtin	Douglas	97428	1	1
Dairy	Klamath	97625	2	1
Dale	Umatilla	97880	1	1
Dallas	Polk	97338	2	1
Damascus	Clackamas	97089	3	2
Days Creek	Douglas	97429	1	1
Dayton	Yamhill	97114	3	2
Dayville	Grant	97825	1	1
Deadwood	Lane	97430	1	1
Deer Island	Columbia	97054	2	1
Depoe Bay	Lincoln	97341	2	1
Detroit	Marion	97342	1	1
Dexter	Lane	97431	1	1
Diamond	Harney	97722	1	1
Dillard	Douglas	97432	1	1
Disston	Lane	97433	1	1
Donald	Marion	97020	1	1
Dorena	Lane	97434	1	1
Drain	Douglas	97435	1	1
Drewsey	Harney	97904	1	1
Dufur	Wasco	97021	2	1
Dundee	Yamhill	97115	3	2
Durkee	Baker	97905	1	1
Eagle Creek	Clackamas	97022	2	2
Eagle Point	Jackson	97524	2	1
Echo	Umatilla	97826	1	1
Eddyville	Lincoln	97343	2	1
Elgin	Union	97827	1	1
Elkton	Douglas	97436	1	1
Elmira	Lane	97437	1	1
Enterprise	Wallowa	97828	1	1
Estacada	Clackamas	97023	2	2
Eugene	Lane	97401	2	3
Eugene	Lane	97402	2	3
Eugene	Lane	97403	2	3
Eugene	Lane	97404	2	3
Eugene	Lane	97405	2	3
Fairview	Multnomah	97024	2	3
Fall Creek	Lane	97438	1	1
Falls City	Polk	97344	2	1
Fields	Harney	97710	1	1
Florence	Lane	97439	1	1

## **E** CLUSTERS BY ZIP CODE SORTED BY CITY

City or Town	County	Zip Code	2014	
			Small Home-based Cluster	Center and Large Home-based Cluster
Forest Grove	Washington	97116	2	2
Fort Klamath	Klamath	97626	2	1
Fort Rock	Lake	97735	1	1
Fossil	Wheeler	97830	2	1
Foster	Linn	97345	1	1
Fox	Grant	97831	1	1
Frenchglen	Harney	97736	1	1
Friend	Wasco	97021	2	1
Gales Creek	Washington	97117	2	2
Gardiner	Douglas	97441	1	1
Garibaldi	Tillamook	97118	2	1
Gaston	Washington	97119	2	2
Gates	Marion	97346	1	1
Gervais	Marion	97026	1	1
Gilchrist	Klamath	97737	2	1
Gladstone	Clackamas	97027	3	2
Glendale	Douglas	97442	1	1
Gleneden Beach	Lincoln	97388	1	1
Glenwood	Washington	97116	2	2
Glide	Douglas	97443	1	1
Gold Beach	Curry	97444	2	1
Gold Hill	Jackson	97525	2	1
Gov't Camp	Clackamas	97028	2	2
Grande Ronde	Polk	97347	1	1
Grants Pass	Josephine	97526	2	1
Grants Pass	Josephine	97527	2	1
Grass Valley	Sherman	97029	2	1
Greenleaf	Lane	97430	1	1
Gresham	Multnomah	97030	2	3
Gresham	Multnomah	97080	2	3
Halfway	Baker	97834	1	1
Halsey	Linn	97348	1	1
Hammond	Clatsop	97121	2	1
Happy Valley	Clackamas	97086	3	3
Harper	Malheur	97906	1	1
Harrisburg	Linn	97446	2	1
Hebo	Tillamook	97122	2	1
Helix	Umatilla	97835	1	1
Heppner	Morrow	97836	1	1
Hereford	Baker	97837	1	1
Hermiston	Umatilla	97838	1	1
Hillsboro	Washington	97124	2	3
Hines	Harney	97738	1	1
Hood River	Hood River	97031	2	3
Hubbard	Marion	97032	1	1
Huntington	Baker	97907	1	1
Idanha	Marion	97350	1	1
Idleyld Park	Douglas	97447	1	1
Imbler	Union	97841	1	1

**CLUSTERS BY ZIP CODE SORTED BY CITY E**

City or Town	County	Zip Code	2014	2014
			Small Home-based Cluster	Center and Large Home-based Cluster
Imnaha	Wallowa	97842	1	1
Independence	Polk	97351	2	1
Ironside	Malheur	97908	1	1
Irrigon	Morrow	97844	1	1
Jacksonville	Jackson	97530	1	1
Jamieson	Malheur	97909	1	1
Jefferson	Marion	97352	1	1
John Day	Grant	97845	1	1
Jordon Valley	Malheur	97910	1	1
Joseph	Wallowa	97846	1	1
Junction City	Lane	97448	2	2
Juntura	Malheur	97911	1	1
Keizer	Marion	97307	2	2
Keno	Klamath	97627	2	1
Kent	Sherman	97033	2	1
Kerby	Josephine	97531	1	1
Kimberly	Grant	97848	1	1
Kings Valley	Benton	97353	2	2
Klamath Falls	Klamath	97601	2	1
La Pine	Deschutes	97739	2	1
Lafayette	Yamhill	97127	2	2
LaGrande	Union	97850	2	1
Lake of Woods	Klamath	97603	2	1
Lake Oswego	Clackamas	97034	3	3
Lake Oswego	Clackamas	97035	3	3
Lakeside	Coos	97449	2	1
Lakeview	Lake	97630	1	1
Langlois	Curry	97450	2	1
Lawen	Harney	97740	1	1
Leaburg	Lane	97489	2	1
Lebanon	Linn	97355	2	1
Lexington	Morrow	97839	1	1
Lincoln City	Lincoln	97367	2	1
Logsdon	Lincoln	97357	2	1
Lone	Morrow	97843	1	1
Long Creek	Grant	97856	1	1
Lorane	Lane	97451	1	1
Lostine	Wallowa	97857	1	1
Lowell	Lane	97452	1	1
Lyons	Linn	97358	1	1
Madras	Jefferson	97741	2	1
Malin	Klamath	97632	2	1
Manning	Washington	97125	2	2
Manzanita	Tillamook	97130	2	1
Mapleton	Lane	97453	1	1
Marcola	Lane	97454	2	1
Marion	Marion	97359	1	1
Marylhurst	Clackamas	97036	3	2

## **E** CLUSTERS BY ZIP CODE SORTED BY CITY

City or Town	County	Zip Code	2014	2014
			Small Home-based Cluster	Center and Large Home-based Cluster
Maupin	Wasco	97037	2	1
McMinnville	Yamhill	97128	2	2
McNary	Umatilla	97882	1	1
Meacham	Umatilla	97859	1	1
Medford	Jackson	97501	2	2
Medford	Jackson	97504	2	2
Mehama	Marion	97384	1	1
Merlin	Josephine	97532	1	1
Merrill	Klamath	97633	2	1
Metolius	Jefferson	97742	1	1
Midland	Klamath	97634	2	1
Mikkalo	Gilliam	97861	1	1
Mill City	Linn	97360	1	1
Milton Frwtr	Umatilla	97862	2	1
Milwaukie	Clackamas	97222	3	2
Milwaukie	Clackamas	97267	3	2
Mitchell	Wheeler	97750	2	1
Molalla	Clackamas	97038	2	2
Monmouth	Polk	97361	2	1
Monroe	Benton	97456	2	2
Monument	Grant	97864	1	1
Moro	Sherman	97039	2	1
Mosier	Wasco	97040	2	1
Mount Hood	Hood River	97041	2	2
Mount Vernon	Grant	97865	1	1
Mt. Angel	Marion	97362	1	2
Mulino	Clackamas	97042	2	2
Murphy	Josephine	97533	1	1
Myrtle Creek	Douglas	97457	2	1
Myrtle Point	Coos	97458	2	1
Nehalem	Tillamook	97131	2	1
Neotsu	Lincoln	97364	1	1
Neskowin	Tillamook	97149	2	1
Netarts	Tillamook	97143	2	1
New Pine Crk	Lake	97635	1	1
Newberg	Yamhill	97132	3	3
Newport	Lincoln	97365	3	1
North Bend	Coos	97459	2	1
North Plains	Washington	97133	2	2
North Powder	Union	97867	1	1
Norway	Coos	97460	2	1
Noti	Lane	97461	1	1
Nyssa	Malheur	97913	1	1
Oak Grove	Multnomah	97268	2	3
Oakland	Douglas	97462	2	1
Oakridge	Lane	97463	1	1
O'Brien	Josephine	97534	1	1
Oceanside	Tillamook	97134	2	1
Odell	Hood River	97044	2	2

**CLUSTERS BY ZIP CODE SORTED BY CITY E**

City or Town	County	Zip Code	2014	2014
			Small Home-based Cluster	Center and Large Home-based Cluster
Ontario	Malheur	97914	1	1
Ophir	Curry	97464	2	1
Oregon City	Clackamas	97045	3	3
Otis	Lincoln	97368	1	1
Otter Rock	Lincoln	97369	1	1
Oxbow	Baker	97840	1	1
Pacific City	Tillamook	97135	2	1
Paisley	Lake	97636	1	1
Paulina	Crook	97751	1	1
Pendleton	Umatilla	97801	1	2
Philomath	Benton	97370	3	2
Phoenix	Jackson	97535	2	1
Pilot Rock	Umatilla	97868	1	1
Pleasant Hill	Lane	97455	2	1
Plush	Lake	97637	1	1
Port Orford	Curry	97465	2	1
Portland	Multnomah	97201	3	4
Portland	Multnomah	97202	3	4
Portland	Multnomah	97203	3	4
Portland	Multnomah	97204	3	4
Portland	Multnomah	97205	3	4
Portland	Multnomah	97206	3	4
Portland	Multnomah	97209	3	4
Portland	Multnomah	97210	3	4
Portland	Multnomah	97211	3	4
Portland	Multnomah	97212	3	4
Portland	Multnomah	97213	3	4
Portland	Multnomah	97214	3	4
Portland	Multnomah	97215	3	4
Portland	Multnomah	97216	2	3
Portland	Multnomah	97217	3	4
Portland	Multnomah	97218	3	4
Portland	Multnomah	97219	3	4
Portland	Multnomah	97220	2	3
Portland	Multnomah	97221	3	4
Portland	Multnomah	97225	2	3
Portland	Multnomah	97227	3	4
Portland	Multnomah	97229	3	4
Portland	Multnomah	97230	2	3
Portland	Multnomah	97231	3	4
Portland	Multnomah	97232	3	4
Portland	Multnomah	97233	2	3
Portland	Multnomah	97236	2	3
Portland	Multnomah	97239	3	4
Portland	Multnomah	97242	3	4
Portland	Multnomah	97266	2	3
Portland	Multnomah	97286	3	4
Portland	Multnomah	97292	3	4
Post	Crook	97752	1	1

## **E** CLUSTERS BY ZIP CODE SORTED BY CITY

City or Town	County	Zip Code	2014	2014
			Small Home-based Cluster	Center and Large Home-based Cluster
Powell Butte	Crook	97753	1	1
Powers	Coos	97466	2	1
Prairie City	Grant	97869	1	1
Princeton	Harney	97721	1	1
Prineville	Crook	97754	1	1
Prospect	Jackson	97536	1	1
Rainier	Columbia	97048	2	1
Redmond	Deschutes	97756	2	1
Redmond	Deschutes	97760	2	1
Reedsport	Douglas	97467	2	1
Remote	Coos	97468	2	1
Rhododendron	Clackamas	97049	2	2
Richland	Baker	97870	1	1
Rickreall	Polk	97371	2	1
Riddle	Douglas	97469	1	1
Rieth	Umatilla	97871	1	1
Riley	Harney	97758	1	1
Ritter	Grant	97872	1	1
Rockaway Bch	Tillamook	97136	2	1
Rogue River	Jackson	97537	2	1
Rose Lodge	Lincoln	97372	2	1
Roseburg	Douglas	97470	2	1
Roseburg	Douglas	97471	2	1
Rufus	Sherman	97050	2	1
Saginaw	Lane	97472	1	1
Salem	Marion	97305	2	2
Salem	Marion	97306	2	2
Salem	Marion	97309	2	2
Salem	Marion	97317	2	2
Salem NE	Marion	97301	2	2
Salem NE	Marion	97303	2	2
Salem Rt 3, 4	Marion	97302	2	2
Salem St Inst	Marion	97310	2	2
Salem West	Marion	97304	2	2
Sandy	Clackamas	97055	2	2
Scappoose	Columbia	97056	2	2
Scio	Linn	97374	2	1
Scotts Mills	Marion	97375	1	1
Scottsburg	Douglas	97473	1	1
Seal Rock	Lincoln	97376	2	1
Seaside	Clatsop	97138	2	1
Selma	Josephine	97538	1	1
Seneca	Grant	97873	1	1
Shady Cove	Jackson	97539	2	1
Shaniko	Wasco	97057	2	1
Shedd	Linn	97377	2	1
Sheridan	Yamhill	97378	2	2
Sherwood	Washington	97140	2	3
Siletz	Lincoln	97380	2	1



**CLUSTERS BY ZIP CODE SORTED BY CITY E**

City or Town	County	Zip Code	2014	2014
			Small Home-based Cluster	Center and Large Home-based Cluster
Silver Lake	Lake	97638	1	1
Silverton	Marion	97381	1	1
Sisters	Deschutes	97759	2	1
Sixes	Curry	97476	2	1
Southbeach	Lincoln	97366	2	1
Sprague River	Klamath	97639	2	1
Spray	Wheeler	97874	2	1
Springfield	Lane	97478	2	2
St. Paul	Marion	97137	1	1
St. Helens	Columbia	97051	2	2
Stanfield	Umatilla	97875	1	1
Stayton	Marion	97383	1	1
Sublimity	Marion	97385	1	1
Summer Lake	Lake	97640	1	1
Summerville	Union	97876	1	1
Sumpter	Baker	97877	1	1
Sun River	Deschutes	97707	2	1
Sunny Valley	Josephine	97497	2	2
Sutherlin	Douglas	97479	2	1
Sweet Home	Linn	97386	2	1
Swiss Home	Lane	97480	1	1
Talent	Jackson	97540	2	1
Tangent	Linn	97389	2	1
Tenmile	Douglas	97481	1	1
The Dalles	Wasco	97058	2	1
Thurston	Lane	97482	2	1
Tidewater	Lincoln	97390	1	1
Tigard	Washington	97223	3	3
Tigard	Washington	97224	3	3
Tillamook	Tillamook	97141	2	1
Tiller	Douglas	97484	1	1
Timber	Washington	97144	2	2
Toledo	Lincoln	97391	2	1
Tolovana Park	Clatsop	97145	1	1
Trail	Jackson	97541	2	1
Troutdale	Multnomah	97060	2	3
Tualatin	Washington	97062	2	3
Turner	Marion	97392	1	1
Tygh Valley	Wasco	97063	2	1
Umatilla	Umatilla	97882	2	1
Umpqua	Douglas	97486	1	1
Union	Union	97883	1	1
Union	Union	97833	2	1
Unity	Baker	97884	1	1
Vale	Malheur	97918	1	1
Veneta	Lane	97487	2	2
Vernonia	Columbia	97064	1	1
Vida	Lane	97488	1	1
Waldport	Lincoln	97394	2	1

**E CLUSTERS BY ZIP CODE SORTED BY CITY**

City or Town	County	Zip Code	2014	2014
			Small Home-based Cluster	Center and Large Home-based Cluster
Wallowa	Wallowa	97885	1	1
Walton	Lane	97490	1	1
Warm Springs	Jefferson	97761	1	1
Warren	Columbia	97053	2	1
Warrenton	Clatsop	97146	2	1
Wasco	Sherman	97065	2	1
Wedderburn	Curry	97491	2	1
Wemme	Clackamas	97067	2	2
West Linn	Clackamas	97068	3	3
Westfall	Malheur	97920	1	1
Westfir	Lane	97492	1	1
Westlake	Lane	97493	1	1
Weston	Umatilla	97886	1	1
Westport	Columbia	97016	2	1
Wheeler	Tillamook	97147	2	1
White City	Jackson	97503	2	1
Wilbur	Douglas	97494	1	1
Wilderville	Josephine	97543	1	1
Willamina	Yamhill	97396	2	1
Williams	Josephine	97544	1	1
Willow Creek	Malheur	97919	1	1
Wilsonville	Clackamas	97070	2	3
Winchester	Douglas	97495	1	1
Winston	Douglas	97496	1	1
Wolf Creek	Josephine	97497	1	1
Woodburn	Marion	97071	2	1
Yachats	Lincoln	97498	1	1
Yamhill	Yamhill	97148	2	2
Yoncalla	Douglas	97499	1	1

**2014 Clusters for Oregon Cities, Counties, and Zip Codes,  
Sorted by County\***

County	City or Town	Zip Code	2014	2014
			Small Home-based Cluster	Center and Large Home-based Cluster
Baker	Baker	97814	1	1
Baker	Bridgeport	97819	1	1
Baker	Durkee	97905	1	1
Baker	Halfway	97834	1	1
Baker	Hereford	97837	1	1
Baker	Huntington	97907	1	1
Baker	Oxbow	97840	1	1
Baker	Richland	97870	1	1
Baker	Sumpter	97877	1	1
Baker	Unity	97884	1	1
Benton	Alpine	97408	2	2
Benton	Alsea	97324	1	1
Benton	Blodgett	97326	2	2
Benton	Corvallis NW	97330	3	3
Benton	Corvallis OSU	97331	3	3
Benton	Corvallis	97339	3	3
Benton	Corvallis SW	97333	3	3
Benton	Kings Valley	97353	2	2
Benton	Monroe	97456	2	2
Benton	Philomath	97370	3	2
Clackamas	Barlow	97003	2	2
Clackamas	Beavercreek	97004	2	2
Clackamas	Boring	97009	2	2
Clackamas	Brightwood	97011	2	2
Clackamas	Canby	97013	2	2
Clackamas	Clackamas	97015	3	2
Clackamas	Colton	97017	2	2
Clackamas	Damascus	97089	3	2
Clackamas	Eagle Creek	97022	2	2
Clackamas	Estacada	97023	2	2
Clackamas	Gladstone	97027	3	2
Clackamas	Gov't Camp	97028	2	2
Clackamas	Happy Valley	97086	3	3
Clackamas	Lake Oswego	97034	3	3
Clackamas	Lake Oswego	97035	3	3
Clackamas	Marylhurst	97036	3	2
Clackamas	Milwaukie	97222	3	2
Clackamas	Milwaukie	97267	3	2
Clackamas	Molalla	97038	2	2
Clackamas	Mulino	97042	2	2
Clackamas	Oregon City	97045	3	3
Clackamas	Rhododendron	97049	2	2
Clackamas	Sandy	97055	2	2

**F CLUSTERS BY ZIP CODE SORTED BY COUNTY**

County	City or Town	Zip Code	2014	2014
			Small Home-based Cluster	Center and Large Home-based Cluster
Clackamas	Wemme	97067	2	2
Clackamas	West Linn	97068	3	3
Clackamas	Wilsonville	97070	2	3
Clatsop	Arch Cape	97102	1	1
Clatsop	Astoria	97103	2	1
Clatsop	Cannon Beach	97110	2	1
Clatsop	Hammond	97121	2	1
Clatsop	Seaside	97138	2	1
Clatsop	Tolovana Park	97145	1	1
Clatsop	Warrenton	97146	2	1
Columbia	Columbia City	97018	2	1
Columbia	Deer Island	97054	2	1
Columbia	Rainier	97048	2	1
Columbia	Scappoose	97056	2	2
Columbia	St. Helens	97051	2	2
Columbia	Vernonia	97064	1	1
Columbia	Warren	97053	2	1
Columbia	Westport	97016	2	1
Coos	Allegany	97407	2	1
Coos	Bandon	97411	2	1
Coos	Broadbent	97414	2	1
Coos	Coos Bay	97420	2	1
Coos	Coquille	97423	2	1
Coos	Lakeside	97449	2	1
Coos	Myrtle Point	97458	2	1
Coos	North Bend	97459	2	1
Coos	Norway	97460	2	1
Coos	Powers	97466	2	1
Coos	Remote	97468	2	1
Crook	Paulina	97751	1	1
Crook	Post	97752	1	1
Crook	Powell Butte	97753	1	1
Crook	Prineville	97754	1	1
Curry	Agness	97406	2	1
Curry	Brookings	97415	2	1
Curry	Gold Beach	97444	2	1
Curry	Langlois	97450	2	1
Curry	Ophir	97464	2	1
Curry	Port Orford	97465	2	1
Curry	Sixes	97476	2	1
Curry	Wedderburn	97491	2	1
Deschutes	Bend	97701	3	2
Deschutes	Bend	97702	3	2
Deschutes	Bend	97708	3	2
Deschutes	Bend	97709	3	2
Deschutes	Brothers	97712	1	1
Deschutes	La Pine	97739	2	1
Deschutes	Redmond	97756	2	1
Deschutes	Redmond	97760	2	1

**CLUSTERS BY ZIP CODE SORTED BY COUNTY** **F**

County	City or Town	Zip Code	2014	2014
			Small Home-based Cluster	Center and Large Home-based Cluster
Deschutes	Sisters	97759	2	1
Deschutes	Sun River	97707	2	1
Douglas	Azalea	97410	1	1
Douglas	Camas Valley	97416	1	1
Douglas	Canyonville	97417	1	1
Douglas	Curtin	97428	1	1
Douglas	Days Creek	97429	1	1
Douglas	Dillard	97432	1	1
Douglas	Drain	97435	1	1
Douglas	Elkton	97436	1	1
Douglas	Gardiner	97441	1	1
Douglas	Glendale	97442	1	1
Douglas	Glide	97443	1	1
Douglas	Idleyld Park	97447	1	1
Douglas	Myrtle Creek	97457	2	1
Douglas	Oakland	97462	2	1
Douglas	Reedsport	97467	2	1
Douglas	Riddle	97469	1	1
Douglas	Roseburg	97470	2	1
Douglas	Roseburg	97471	2	1
Douglas	Scottsburg	97473	1	1
Douglas	Sutherlin	97479	2	1
Douglas	Tenmile	97481	1	1
Douglas	Tiller	97484	1	1
Douglas	Umpqua	97486	1	1
Douglas	Wilbur	97494	1	1
Douglas	Winchester	97495	1	1
Douglas	Winston	97496	1	1
Douglas	Yoncalla	97499	1	1
Gilliam	Arlington	97812	1	1
Gilliam	Condon	97823	1	1
Gilliam	Mikkalo	97861	1	1
Grant	Bates	97817	1	1
Grant	Canyon City	97820	1	1
Grant	Dayville	97825	1	1
Grant	Fox	97831	1	1
Grant	John Day	97845	1	1
Grant	Kimberly	97848	1	1
Grant	Long Creek	97856	1	1
Grant	Monument	97864	1	1
Grant	Mount Vernon	97865	1	1
Grant	Prairie City	97869	1	1
Grant	Ritter	97872	1	1
Grant	Seneca	97873	1	1
Harney	Burns	97720	1	1
Harney	Crane	97732	1	1
Harney	Diamond	97722	1	1
Harney	Drewsey	97904	1	1
Harney	Fields	97710	1	1

## F CLUSTERS BY ZIP CODE SORTED BY COUNTY

County	City or Town	Zip Code	2014	2014
			Small Home-based Cluster	Center and Large Home-based Cluster
Harney	Frenchglen	97736	1	1
Harney	Hines	97738	1	1
Harney	Lawen	97740	1	1
Harney	Princeton	97721	1	1
Harney	Riley	97758	1	1
Hood River	Cascade Locks	97014	2	2
Hood River	Hood River	97031	2	3
Hood River	Mount Hood	97041	2	2
Hood River	Odell	97044	2	2
Jackson	Ashland	97520	3	2
Jackson	Butte Falls	97522	1	1
Jackson	Central Point	97502	2	2
Jackson	Eagle Point	97524	2	1
Jackson	Gold Hill	97525	2	1
Jackson	Jacksonville	97530	1	1
Jackson	Medford	97501	2	2
Jackson	Medford	97504	2	2
Jackson	Phoenix	97535	2	1
Jackson	Prospect	97536	1	1
Jackson	Rogue River	97537	2	1
Jackson	Shady Cove	97539	2	1
Jackson	Talent	97540	2	1
Jackson	Trail	97541	2	1
Jackson	White City	97503	2	1
Jefferson	Ashwood	97711	1	1
Jefferson	Camp Sherman	97730	1	1
Jefferson	Culver	97734	1	1
Jefferson	Madras	97741	2	1
Jefferson	Metolius	97742	1	1
Jefferson	Warm Springs	97761	1	1
Josephine	Cave Junction	97523	1	1
Josephine	Grants Pass	97526	2	1
Josephine	Grants Pass	97527	2	1
Josephine	Kerby	97531	1	1
Josephine	Merlin	97532	1	1
Josephine	Murphy	97533	1	1
Josephine	O'Brien	97534	1	1
Josephine	Selma	97538	1	1
Josephine	Sunny Valley	97478	2	2
Josephine	Wilderville	97543	1	1
Josephine	Williams	97544	1	1
Josephine	Wolf Creek	97497	1	1
Klamath	Beatty	97621	2	1
Klamath	Bly	97622	2	1
Klamath	Bonanza	97623	2	1
Klamath	Chemult	97731	2	1
Klamath	Chiloquin	97624	2	1
Klamath	Crater Lake	97604	2	1
Klamath	Crescent Lake	97425	2	1

**CLUSTERS BY ZIP CODE SORTED BY COUNTY F**

County	City or Town	Zip Code	2014	2014
			Small Home-based Cluster	Center and Large Home-based Cluster
Klamath	Crescent	97733	2	1
Klamath	Dairy	97625	2	1
Klamath	Fort Klamath	97626	2	1
Klamath	Gilchrist	97737	2	1
Klamath	Keno	97627	2	1
Klamath	Klamath Falls	97601	2	1
Klamath	Lake of Woods	97603	2	1
Klamath	Malin	97632	2	1
Klamath	Merrill	97633	2	1
Klamath	Midland	97634	2	1
Klamath	Sprague River	97639	2	1
Lake	Adel	97620	1	1
Lake	Christmas Valley	97641	1	1
Lake	Fort Rock	97735	1	1
Lake	Lakeview	97630	1	1
Lake	New Pine Crk	97635	1	1
Lake	Paisley	97636	1	1
Lake	Plush	97637	1	1
Lake	Silver Lake	97638	1	1
Lake	Summer Lake	97640	1	1
Lane	Alvadore	97409	1	1
Lane	Blachly	97412	1	1
Lane	Blue River	97413	1	1
Lane	Cheshire	97419	1	1
Lane	Cottage Grove	97424	1	2
Lane	Creswell	97426	1	1
Lane	Culp Creek	97427	1	1
Lane	Deadwood	97430	1	1
Lane	Dexter	97431	1	1
Lane	Disston	97433	1	1
Lane	Dorena	97434	1	1
Lane	Elmira	97437	1	1
Lane	Eugene	97401	2	3
Lane	Eugene	97402	2	3
Lane	Eugene	97403	2	3
Lane	Eugene	97404	2	3
Lane	Eugene	97405	2	3
Lane	Fall Creek	97438	1	1
Lane	Florence	97439	1	1
Lane	Greenleaf	97430	1	1
Lane	Junction City	97448	2	2
Lane	Leaburg	97489	2	1
Lane	Lorane	97451	1	1
Lane	Lowell	97452	1	1
Lane	Mapleton	97453	1	1
Lane	Marcola	97454	2	1
Lane	Noti	97461	1	1
Lane	Oakridge	97463	1	1
Lane	Pleasant Hill	97455	2	1

## F CLUSTERS BY ZIP CODE SORTED BY COUNTY

County	City or Town	Zip Code	2014	2014
			Small Home-based Cluster	Center and Large Home-based Cluster
Lane	Saginaw	97472	1	1
Lane	Springfield	97477	2	2
Lane	Swiss Home	97480	1	1
Lane	Thurston	97482	2	1
Lane	Veneta	97487	2	2
Lane	Vida	97488	1	1
Lane	Walton	97490	1	1
Lane	Westfir	97492	1	1
Lane	Westlake	97493	1	1
Lincoln	Burnt Woods	97328	2	1
Lincoln	Depoe Bay	97341	2	1
Lincoln	Eddyville	97343	2	1
Lincoln	Gleneden Beach	97388	1	1
Lincoln	Lincoln City	97367	2	1
Lincoln	Logsden	97357	2	1
Lincoln	Neotsu	97364	1	1
Lincoln	Newport	97365	3	1
Lincoln	Otis	97368	1	1
Lincoln	Otter Rock	97369	1	1
Lincoln	Rose Lodge	97372	2	1
Lincoln	Seal Rock	97376	2	1
Lincoln	Siletz	97380	2	1
Lincoln	Southbeach	97366	2	1
Lincoln	Tidewater	97390	1	1
Lincoln	Toledo	97391	2	1
Lincoln	Waldport	97394	2	1
Lincoln	Yachats	97498	1	1
Linn	Albany	97321	2	2
Linn	Albany	97322	2	2
Linn	Brownsville	97327	2	1
Linn	Cascadia	97329	1	1
Linn	Crabtree	97335	1	1
Linn	Crawfordsville	97336	2	1
Linn	Foster	97345	1	1
Linn	Halsey	97348	1	1
Linn	Harrisburg	97446	2	1
Linn	Lebanon	97355	2	1
Linn	Lyons	97358	1	1
Linn	Mill City	97360	1	1
Linn	Scio	97374	2	1
Linn	Shedd	97377	2	1
Linn	Sweet Home	97386	2	1
Linn	Tangent	97389	2	1
Malheur	Adrian	97901	1	1
Malheur	Arock	97902	1	1
Malheur	Brogan	97903	1	1
Malheur	Harper	97906	1	1
Malheur	Ironside	97908	1	1
Malheur	Jamieson	97909	1	1



**CLUSTERS BY ZIP CODE SORTED BY COUNTY** **F**

County	City or Town	Zip Code	2014	2014
			Small Home-based Cluster	Center and Large Home-based Cluster
Malheur	Jordon Valley	97910	1	1
Malheur	Juntura	97911	1	1
Malheur	Nyssa	97913	1	1
Malheur	Ontario	97914	1	1
Malheur	Vale	97918	1	1
Malheur	Westfall	97920	1	1
Malheur	Willow Crk St	97919	1	1
Marion	Aumsville	97325	1	1
Marion	Aurora	97002	2	1
Marion	Detroit	97342	1	1
Marion	Donald	97020	1	1
Marion	Gates	97346	1	1
Marion	Gervais	97026	1	1
Marion	Hubbard	97032	1	1
Marion	Idanha	97350	1	1
Marion	Jefferson	97352	1	1
Marion	Keizer	97307	2	2
Marion	Marion	97359	1	1
Marion	Mehama	97384	1	1
Marion	Mt. Angel	97362	1	2
Marion	Salem	97305	2	2
Marion	Salem	97306	2	2
Marion	Salem	97309	2	2
Marion	Salem	97317	2	2
Marion	Salem NE	97301	2	2
Marion	Salem NE	97303	2	2
Marion	Salem Rt 3, 4	97302	2	2
Marion	Salem St Inst	97310	2	2
Marion	Salem West	97304	2	2
Marion	Scotts Mills	97375	1	1
Marion	Silverton	97381	1	1
Marion	St. Paul	97137	1	1
Marion	Stayton	97383	1	1
Marion	Sublimity	97385	1	1
Marion	Turner	97392	1	1
Marion	Woodburn	97071	2	1
Morrow	Boardman	97818	1	1
Morrow	Cecil	97822	1	1
Morrow	Heppner	97836	1	1
Morrow	Irrigon	97844	1	1
Morrow	Lexington	97839	1	1
Morrow	Lone	97843	1	1
Multnomah	Bridal Veil	97010	2	3
Multnomah	Corbett	97019	2	3
Multnomah	Fairview	97024	2	3
Multnomah	Gresham	97030	2	3
Multnomah	Gresham	97080	2	3
Multnomah	Oak Grove	97268	2	3

## F CLUSTERS BY ZIP CODE SORTED BY COUNTY

County	City or Town	Zip Code	2014	2014
			Small Home-based Cluster	Center and Large Home-based Cluster
Multnomah	Portland	97201	3	4
Multnomah	Portland	97202	3	4
Multnomah	Portland	97203	3	4
Multnomah	Portland	97204	3	4
Multnomah	Portland	97205	3	4
Multnomah	Portland	97206	3	4
Multnomah	Portland	97209	3	4
Multnomah	Portland	97210	3	4
Multnomah	Portland	97211	3	4
Multnomah	Portland	97212	3	4
Multnomah	Portland	97213	3	4
Multnomah	Portland	97214	3	4
Multnomah	Portland	97215	3	4
Multnomah	Portland	97216	2	3
Multnomah	Portland	97217	3	4
Multnomah	Portland	97218	3	4
Multnomah	Portland	97219	3	4
Multnomah	Portland	97220	2	3
Multnomah	Portland	97221	3	4
Multnomah	Portland	97225	2	3
Multnomah	Portland	97227	3	4
Multnomah	Portland	97229	3	4
Multnomah	Portland	97230	2	3
Multnomah	Portland	97231	3	4
Multnomah	Portland	97232	3	4
Multnomah	Portland	97233	2	3
Multnomah	Portland	97236	2	3
Multnomah	Portland	97239	3	4
Multnomah	Portland	97242	3	4
Multnomah	Portland	97266	2	3
Multnomah	Portland	97286	3	4
Multnomah	Portland	97292	3	4
Multnomah	Troutdale	97060	2	3
Polk	Dallas	97338	2	1
Polk	Falls City	97344	2	1
Polk	Grande Ronde	97347	1	1
Polk	Independence	97351	2	1
Polk	Monmouth	97361	2	1
Polk	Rickreall	97371	2	1
Sherman	Grass Valley	97029	2	1
Sherman	Kent	97033	2	1
Sherman	Moro	97039	2	1
Sherman	Rufus	97050	2	1
Sherman	Wasco	97065	2	1
Tillamook	Bay City	97107	2	1
Tillamook	Beaver	97108	2	1
Tillamook	Cloverdale	97112	2	1
Tillamook	Garibaldi	97118	2	1
Tillamook	Hebo	97122	2	1

**CLUSTERS BY ZIP CODE SORTED BY COUNTY** **F**

County	City or Town	Zip Code	2014	2014
			Small Home-based Cluster	Center and Large Home-based Cluster
Tillamook	Manzanita	97130	2	1
Tillamook	Nehalem	97131	2	1
Tillamook	Neskowin	97149	2	1
Tillamook	Netarts	97143	2	1
Tillamook	Oceanside	97134	2	1
Tillamook	Pacific City	97135	2	1
Tillamook	Rockaway Bch	97136	2	1
Tillamook	Tillamook	97141	2	1
Tillamook	Wheeler	97147	2	1
Umatilla	Adams	97810	1	1
Umatilla	Athena	97813	2	1
Umatilla	Cayuse	97821	1	1
Umatilla	Dale	97880	1	1
Umatilla	Echo	97826	1	1
Umatilla	Helix	97835	1	1
Umatilla	Hermiston	97838	1	1
Umatilla	McNary	97882	1	1
Umatilla	Meacham	97859	1	1
Umatilla	Milton Frwtr	97862	2	1
Umatilla	Pendleton	97801	1	2
Umatilla	Pilot Rock	97868	1	1
Umatilla	Rieth	97871	1	1
Umatilla	Stanfield	97875	1	1
Umatilla	Umatilla	97882	2	1
Umatilla	Weston	97886	1	1
Union	Cove	97824	1	1
Union	Elgin	97827	1	1
Union	Imbler	97841	1	1
Union	LaGrande	97850	2	1
Union	North Powder	97867	1	1
Union	Summerville	97876	1	1
Union	Union	97883	1	1
Union	Union	97833	2	1
Wallowa	Enterprise	97828	1	1
Wallowa	Imnaha	97842	1	1
Wallowa	Joseph	97846	1	1
Wallowa	Lostine	97857	1	1
Wallowa	Wallowa	97885	1	1
Wasco	Antelope	97001	2	1
Wasco	Dufur	97021	2	1
Wasco	Friend	97021	2	1
Wasco	Maupin	97037	2	1
Wasco	Mosier	97040	2	1
Wasco	Shaniko	97057	2	1
Wasco	The Dalles	97058	2	1
Wasco	Tygh Valley	97063	2	1
Washington	Banks	97106	2	2
Washington	Beaverton	97005	2	3
Washington	Beaverton	97006	2	3

**F CLUSTERS BY ZIP CODE SORTED BY COUNTY**

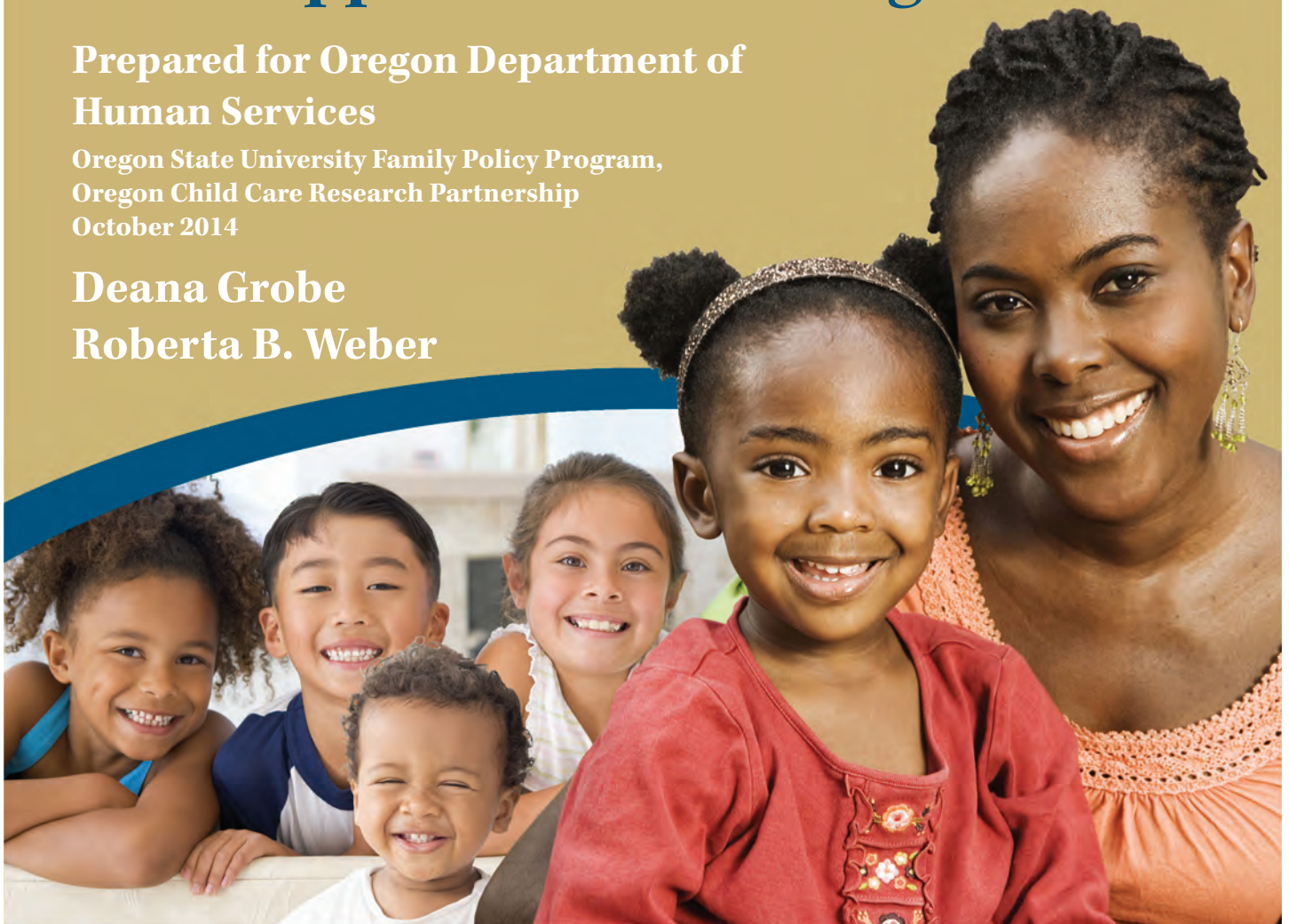
County	City or Town	Zip Code	2014	2014
			Small Home-based Cluster	Center and Large Home-based Cluster
Washington	Beaverton	97007	2	3
Washington	Beaverton	97008	2	3
Washington	Beaverton	97123	2	3
Washington	Buxton	97109	2	2
Washington	Cornelius	97113	2	2
Washington	Forest Grove	97116	2	2
Washington	Gales Creek	97117	2	2
Washington	Gaston	97119	2	2
Washington	Glenwood	97116	2	2
Washington	Hillsboro	97124	2	3
Washington	Manning	97125	2	2
Washington	North Plains	97133	2	2
Washington	Sherwood	97140	2	3
Washington	Tigard	97223	3	3
Washington	Tigard	97224	3	3
Washington	Timber	97144	2	2
Washington	Tualatin	97062	2	3
Wheeler	Fossil	97830	2	1
Wheeler	Mitchell	97750	2	1
Wheeler	Spray	97874	2	1
Yamhill	Amity	97101	3	1
Yamhill	Carlton	97111	2	2
Yamhill	Dayton	97114	3	2
Yamhill	Dundee	97115	3	2
Yamhill	Lafayette	97127	2	2
Yamhill	McMinnville	97128	2	2
Yamhill	Newberg	97132	3	3
Yamhill	Sheridan	97378	2	2
Yamhill	Willamina	97396	2	1
Yamhill	Yamhill	97148	2	2

# 2014 Oregon Child Care Market Price Study **DHS Supplemental Findings**

Prepared for Oregon Department of  
Human Services

Oregon State University Family Policy Program,  
Oregon Child Care Research Partnership  
October 2014

Deana Grobe  
Roberta B. Weber



## **Background**

Prior market price studies were conducted approximately every two years from 1990 forward. All studies relied on data collected by Child Care Resource and Referral Agencies (CCR&R) and all but one involved analysis of data stored in the CCR&R database. The 1999 study involved a survey of providers drawn from that database. Since 1994 (with the exception of the 1999 survey) researchers have analyzed the data by zip code looking for price clusters. Through 2008 researchers found prices for centers, certified family, and family care to cluster into three groups known as rate areas.

In the last two Oregon market price studies (2010, 2012) analyses of prices indicated that there were changes in how providers were pricing services and that the three clusters may no longer accurately describe prices. Analyses indicated that center and certified family child care prices were steadily increasing and that prices of family child care providers were stagnating. In addition, programs were increasingly moving into the highest rate areas or remaining in the current rate area, in part, due to a DHS policy that no zip code should move to a lower rate area. There were also signs that center and small family child care prices were not clustering in similar ways. These findings raised question about whether or not the three clusters were accurately describing prices in the child care market.

In analyzing the 2014 data we found a continuation of the trends observed in 2010 and 2012 data. Using guidance from a national study on market price surveys we looked into alternative methods to identify zip code areas with similar child care prices. After careful consideration we decided to use a statistical clustering method that looks for groups or clusters that occur in the data and provides a systematic way to find the optimal natural breaks between groups. The findings from those analyses can be found in *the 2014 Oregon Child Care Market Price Study*. That study found that family child care prices fell into three clusters and that center and certified family care prices fell into four clusters. More on those findings can be found in the publication noted above.

## **Purpose of this Supplemental Document**

The clusters created by the use of statistical clustering do not match the three rate areas identified in earlier studies or the maximum payment rates that were informed by the 2012 Market Price Study findings. Thus, we analyzed the 2014 price data by three rate areas as was done in the past. As noted below, the analyses further documents that provider changes in pricing practices make the three rate areas no longer a valid representation of market prices. But analyzing data by the three rate areas allowed us to compare 2014 market prices with maximum payment rates currently used by the Oregon Department of Human Services (DHS). This supplemental document was produced for DHS's use in making the transition from geographically grouping prices based on the previous three rate areas (A, B, C) to grouping prices in the clusters that appear to better represent the current market. Specifically, this supplemental presents the 2014 findings using the same three rate areas for all three types of care to geographically group prices by zip code.

## **Findings**

To test the validity of the three rate areas (A, B, C) we compared Oregon statewide prices to prices in the three rate areas. If the areas were valid, within care type and age group served, Area A prices should exceed the statewide price, Area C prices should be lower than the statewide price, and Area B rates should approximate the statewide price. Figure 1 displays graphs (see Figure 1 below)

comparing the 75<sup>th</sup> percentile monthly prices per child care slot, across type of care, and age group served. The graphs provide evidence that the three rate areas do not accurately capture the distribution of prices due to changes in provider pricing practices and the practice of not allowing zip codes to move to a lower rate area. Use of the three rates show: (a) statewide prices are more closely representing rate Area A than B, especially for centers and certified family homes, and (b) there is less distinction between the prices in the three rate areas. In some cases the price is the same across the rate areas. In other cases rate Area C is not the lowest price, as one would expect if the rate areas were accurately describing the price distributions across the state.

Overall, the geographic analysis described below shows the child care prices to be lower in rural areas of the state and higher in the Portland metropolitan area, parts of the Mid Willamette Valley, and parts of Deschutes and Jackson counties.

- **Rate Area A** contains zip codes with some of the highest prices and has 56% of all child care facilities. Area A includes the Portland metropolitan area, Mount Hood, Corvallis, Independence, Monmouth, Seal Rock, Eugene, Springfield, Ashland, Bend, and Gold Hill.
- **Rate Area B** has 33% of all child care facilities, and includes the cities of Salem, Stayton, Astoria, Hammond, Coos Bay, Coquille, Lincoln City, Sweet Home, Sisters, Redmond, Medford, Roseburg, Albany, Woodburn, Halsey, Philomath, and areas outside the Portland metropolitan area and the Mid-Willamette Valley.
- **Rate Area C** includes all communities not in Area A or B, including most of Oregon's rural areas. Rate Area C includes 11% of all child care facilities.

*The percent of slots that can be purchased with the value of DHS payment rates increased from 58% to 69% between 2012 and 2014.* The 2014 prices at the 75<sup>th</sup> percentile for the identified rate areas were found to be closer to DHS licensed rate maximums for all ages and type of care than in any past market price surveys (see Tables 1-3). This is primarily the result of an increase in licensed rate maximums in the fall of 2013 based on the 2012 market prices for most facilities.

**Findings  
(continued)**

The state subsidy or maximum payment rate affects parents’ access to all types of child care in the community. The study explored access in two ways: (1) percent of slots statewide that can be purchased at the subsidy rate, and (2) percent of facility care by zip code that can be purchased at the subsidy rate. The second measure was created to determine if the amount of access varied by geographic location. Findings include:

In Oregon, current licensed rate maximums are adequate to purchase approximately 69% of child care toddler slots statewide (see Table below). This is up 11% from the 2012 market price study, and significantly greater than years prior to 2008.

**% of child care toddler slots that can be purchased at the licensed rate maximums**

	2000	2002	2004	2006	2008	2010	2012	2014
<i>Full-time, Toddler, Family, Center, and Certified Family Care</i>	<b>38%</b>	<b>24%</b>	<b>21%</b>	<b>26%</b>	<b>68%</b>	<b>64%</b>	<b>58%</b>	<b>69%</b>

Findings on access by geographic location are shown in the Table below. In 13% of family, 18% of center, and 10% of certified family care zip code areas that have prices, the DHS licensed rate maximums are not adequate to purchase any market child care. In 74% of zip code areas families can purchase over 50% of family child care in the community at the licensed rate maximums. In 68% of zip code areas families can purchase over 50% of center child care. And in 81% of zip code areas families can purchase over 50% of certified child care.

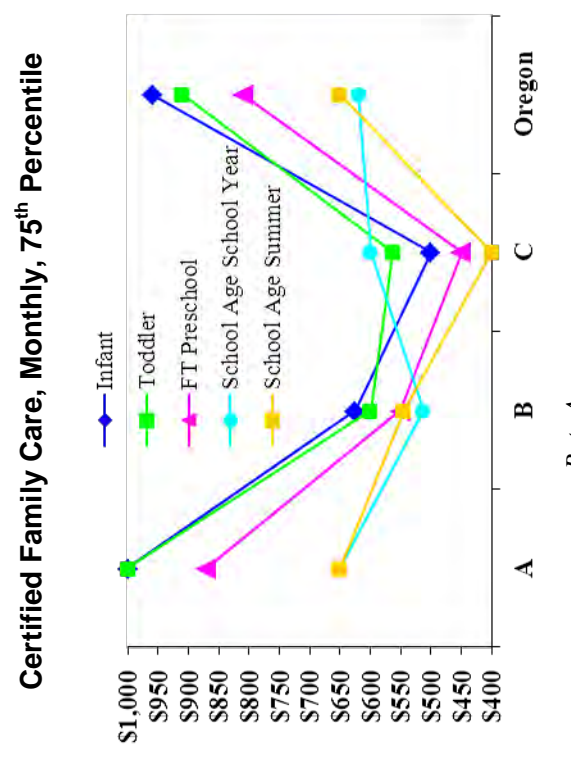
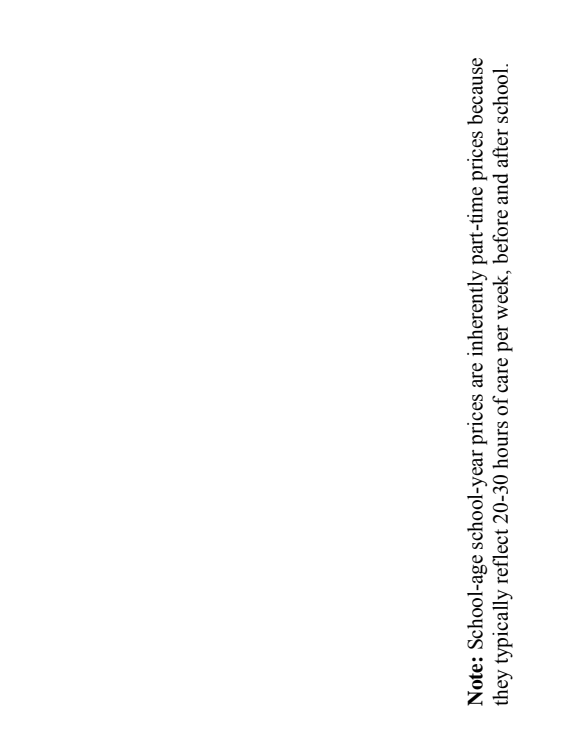
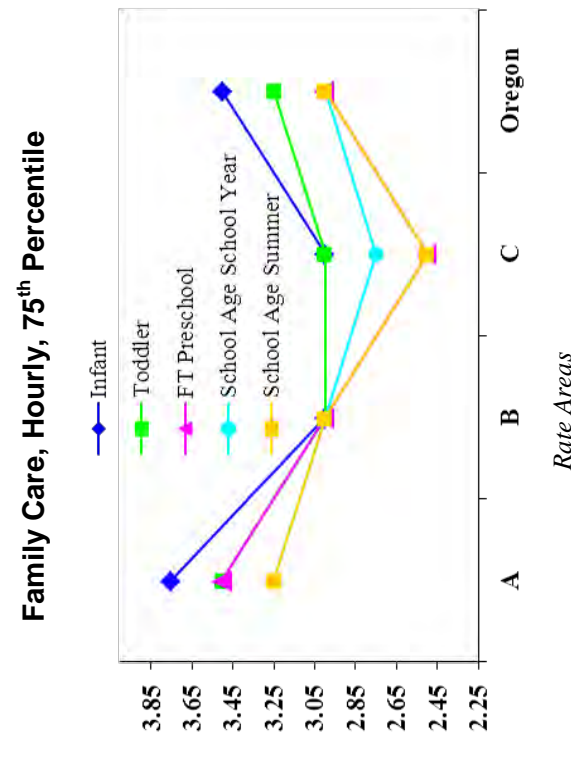
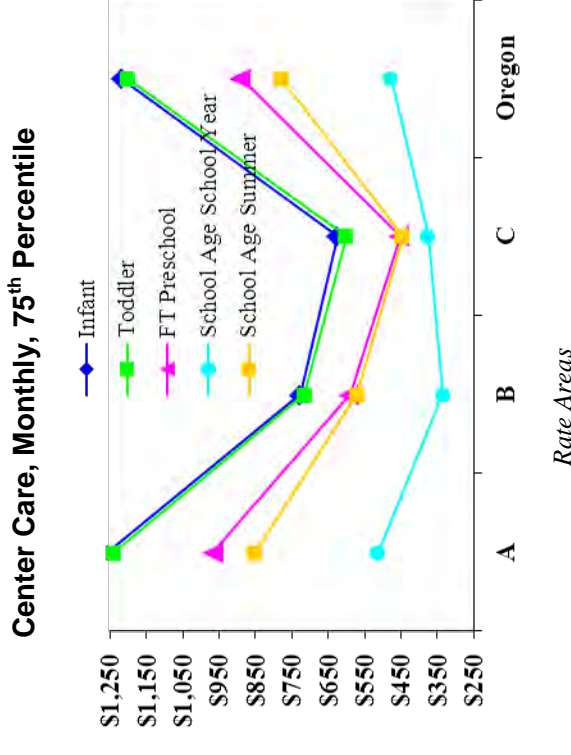
**Percent of Child Care Facilities Whose Price is Less Than or Equal to the DHS Licensed Rate Maximums**

	Family Care		Center Care		Certified Care	
	Number of Zip Codes	Percent of Zip Codes	Number of Zip Codes	Percent of Zip Codes	Number of Zip Codes	Percent of Zip Codes
0%	29	13%	22	18%	10	10%
1% to 25%	4	2%	5	4%	2	2%
26% to 50%	26	12%	12	10%	8	8%
51% to 75%	61	27%	16	13%	14	14%
Greater than 75%	105	47%	67	55%	69	67%

**Note:** The number of zip codes for center and certified care is lower than family care because a larger number of zip code areas have family child care facilities than have centers or certified care.



**Figure 1**  
**Comparison of 2014 Rate Areas and Oregon Statewide Prices by Child Care Slots**



**Note:** School-age school-year prices are inherently part-time prices because they typically reflect 20-30 hours of care per week, before and after school.

Table 1. 2014 Prices by 2014 Rate Areas for Family Child Care

		Rate Area A			Rate Area B			Rate Area C		
		Facilities	Slots	Licensed Rate Maximums	Facilities	Slots	Licensed Rate Maximums	Facilities	Slots	Licensed Rate Maximums
<b>INFANT</b>										
<b>Hourly</b>	N=637	N=4362		\$3.50	N=500	N=3190		N=256	N=1499	
90 <sup>th</sup>	\$5.00	\$4.50			\$3.50	\$3.50		\$3.00	\$3.50	\$2.75
75 <sup>th</sup>	\$3.75	\$3.75			\$3.00	\$3.00		\$3.00	\$3.00	\$3.00
60 <sup>th</sup>	\$3.50	\$3.50			\$3.00	\$3.00		\$2.75	\$2.75	\$2.75
50 <sup>th</sup>	\$3.00	\$3.00			\$3.00	\$3.00		\$2.50	\$2.50	\$2.50
25 <sup>th</sup>	\$3.00	\$3.00			\$2.50	\$2.50		\$2.50	\$2.50	\$2.50
10 <sup>th</sup>	\$2.50	\$2.50			\$2.50	\$2.50		\$2.20	\$2.20	\$2.20
<b>Monthly</b>	N=331	N=2431		\$600	N=399	N=2684		N=107	N=709	
90 <sup>th</sup>	\$750	\$750			\$600	\$600		\$500	\$500	\$450
75 <sup>th</sup>	\$650	\$650			\$525	\$525		\$450	\$450	\$450
60 <sup>th</sup>	\$600	\$600			\$500	\$500		\$450	\$450	\$450
50 <sup>th</sup>	\$600	\$600			\$500	\$500		\$425	\$432	\$432
25 <sup>th</sup>	\$530	\$550			\$450	\$450		\$400	\$400	\$400
10 <sup>th</sup>	\$493	\$495			\$400	\$400		\$395	\$395	\$395
<b>TODDLER</b>										
<b>Hourly</b>	N=715	N=4899		\$3.25	N=523	N=3374		N=269	N=1571	
90 <sup>th</sup>	\$5.00	\$4.50			\$3.50	\$3.50		\$3.00	\$3.00	\$2.50
75 <sup>th</sup>	\$3.50	\$3.50			\$3.00	\$3.00		\$2.75	\$3.00	\$3.00
60 <sup>th</sup>	\$3.00	\$3.00			\$3.00	\$3.00		\$2.50	\$2.50	\$2.50
50 <sup>th</sup>	\$3.00	\$3.00			\$2.85	\$3.00		\$2.50	\$2.50	\$2.50
25 <sup>th</sup>	\$3.00	\$3.00			\$2.50	\$2.50		\$2.25	\$2.25	\$2.25
10 <sup>th</sup>	\$2.25	\$2.20			\$2.50	\$2.50		\$2.00	\$2.00	\$2.00

Table 1 (continued). 2014 Prices by 2014 Rate Areas for Family Child Care

Rate Area A			Rate Area B			Rate Area C			
	Facilities	Slots	Licensed Rate Maximums	Facilities	Slots	Licensed Rate Maximums	Facilities	Slots	Licensed Rate Maximums
<b>Monthly</b>	N=351	N=2557	\$600	N=415	N=2791	\$480	N=113	N=747	\$450
90 <sup>th</sup>	\$750	\$735		\$600	\$600		\$500	\$500	
75 <sup>th</sup>	\$625	\$630		\$500	\$500		\$450	\$450	
60 <sup>th</sup>	\$600	\$600		\$495	\$495		\$425	\$425	
50 <sup>th</sup>	\$600	\$600		\$475	\$480		\$400	\$425	
25 <sup>th</sup>	\$500	\$500		\$450	\$450		\$400	\$400	
10 <sup>th</sup>	\$450	\$450		\$400	\$400		\$365	\$372	
<b>PRE-SCHOOL AGE</b>									
<b>Hourly</b>	N=746	N=5071	\$3.00	N=543	N=3492	\$3.00	N=276	N=1608	\$2.50
90 <sup>th</sup>	\$4.50	\$4.20		\$3.50	\$3.50		\$3.00	\$3.00	
75 <sup>th</sup>	\$3.50	\$3.50		\$3.00	\$3.00		\$2.50	\$2.50	
60 <sup>th</sup>	\$3.00	\$3.00		\$3.00	\$3.00		\$2.50	\$2.50	
50 <sup>th</sup>	\$3.00	\$3.00		\$2.75	\$2.75		\$2.50	\$2.50	
25 <sup>th</sup>	\$2.50	\$2.50		\$2.50	\$2.50		\$2.20	\$2.20	
10 <sup>th</sup>	\$2.00	\$2.00		\$2.25	\$2.35		\$2.00	\$2.00	
<b>Monthly</b>	N=354	N=2569	\$600	N=428	N=2886	\$475	N=115	N=752	\$420
90 <sup>th</sup>	\$700	\$700		\$550	\$550		\$500	\$500	
75 <sup>th</sup>	\$600	\$600		\$500	\$500		\$440	\$450	
60 <sup>th</sup>	\$600	\$600		\$475	\$475		\$420	\$425	
50 <sup>th</sup>	\$550	\$550		\$450	\$450		\$400	\$400	
25 <sup>th</sup>	\$500	\$500		\$425	\$425		\$390	\$395	
10 <sup>th</sup>	\$425	\$425		\$400	\$400		\$300	\$300	
<b>SCHOOL AGE SCHOOL YEAR</b>									
<b>Hourly</b>	N=702	N=4822		N=513	N=3328		N=183	N=1150	
90 <sup>th</sup>	\$4.50	\$4.00		\$3.50	\$3.50		\$3.00	\$3.00	
75 <sup>th</sup>	\$3.25	\$3.25		\$3.00	\$3.00		\$2.50	\$2.75	
60 <sup>th</sup>	\$3.00	\$3.00		\$3.00	\$3.00		\$2.50	\$2.50	
50 <sup>th</sup>	\$3.00	\$3.00		\$2.75	\$2.85		\$2.50	\$2.50	
25 <sup>th</sup>	\$2.50	\$2.50		\$2.50	\$2.50		\$2.00	\$2.20	
10 <sup>th</sup>	\$2.00	\$2.00		\$2.20	\$2.25		\$2.00	\$2.00	

Table 1 (continued). 2014 Prices by 2014 Rate Areas for Family Child Care

Rate Area A			Rate Area B			Rate Area C			
	Facilities	Slots	Licensed Rate Maximums	Facilities	Slots	Licensed Rate Maximums	Facilities	Slots	Licensed Rate Maximums
<b>Monthly</b>	N=178	N=1356	\$413	N=176	N=1216	\$338	N=41	N=270	\$330
90 <sup>th</sup>	\$600	\$600		\$500	\$500		\$450	\$450	
75 <sup>th</sup>	\$550	\$550		\$450	\$450		\$425	\$425	
60 <sup>th</sup>	\$500	\$500		\$400	\$425		\$400	\$400	
50 <sup>th</sup>	\$483	\$475		\$400	\$400		\$400	\$400	
25 <sup>th</sup>	\$400	\$400		\$325	\$300		\$360	\$375	
10 <sup>th</sup>	\$300	\$300		\$250	\$250		\$250	\$250	
<b>SCHOOL AGE SUMMER</b>									
<b>Hourly</b>	N=547	N=3758	\$3.00	N=401	N=2578	\$3.00	N=223	N=1296	\$2.50
90 <sup>th</sup>	\$4.50	\$4.00		\$3.25	\$3.25		\$3.00	\$3.00	
75 <sup>th</sup>	\$3.50	\$3.25		\$3.00	\$3.00		\$2.50	\$2.50	
60 <sup>th</sup>	\$3.00	\$3.00		\$3.00	\$3.00		\$2.50	\$2.50	
50 <sup>th</sup>	\$3.00	\$3.00		\$2.75	\$2.75		\$2.50	\$2.50	
25 <sup>th</sup>	\$2.50	\$2.50		\$2.50	\$2.50		\$2.00	\$2.00	
10 <sup>th</sup>	\$2.00	\$2.00		\$2.25	\$2.35		\$2.00	\$2.00	
<b>Monthly</b>	N=220	N=1608	\$550	N=299	N=2102	\$450	N=85	N=562	\$440
90 <sup>th</sup>	\$650	\$650		\$550	\$550		\$500	\$500	
75 <sup>th</sup>	\$600	\$600		\$500	\$500		\$425	\$425	
60 <sup>th</sup>	\$550	\$550		\$450	\$460		\$400	\$400	
50 <sup>th</sup>	\$500	\$500		\$450	\$450		\$400	\$400	
25 <sup>th</sup>	\$455	\$475		\$400	\$400		\$375	\$375	
10 <sup>th</sup>	\$400	\$400		\$375	\$385		\$300	\$300	

Table 2. 2014 Prices by 2014 Rate Areas for Center Care

Rate Area A			Rate Area B			Rate Area C			
	Facilities	Slots	Licensed Rate Maximums	Facilities	Slots	Licensed Rate Maximums	Facilities	Slots	Licensed Rate Maximums
<b>INFANT</b>									
<b>Hourly</b>	N=13	N=112	\$7.00	N=17	N=125	\$4.20	N=3	N=22	\$3.65
90 <sup>th</sup>	\$15.00	\$12.00		\$5.00	\$5.50		\$4.50	\$4.50	
75 <sup>th</sup>	\$8.50	\$12.00		\$4.95	\$5.00		\$4.50	\$4.50	
60 <sup>th</sup>	\$7.00	\$7.25		\$4.00	\$4.95		\$4.00	\$4.00	
50 <sup>th</sup>	\$7.00	\$7.25		\$3.80	\$4.10		\$4.00	\$4.00	
25 <sup>th</sup>	\$4.50	\$5.63		\$3.25	\$3.50		\$3.85	\$3.85	
10 <sup>th</sup>	\$4.00	\$4.50		\$3.00	\$3.00		\$3.85	\$3.85	
<b>Monthly</b>	N=160	N=1648	\$1130	N=49	N=393	\$715	N=19	N=179	\$586
90 <sup>th</sup>	\$1,350	\$1,390		\$858	\$800		\$715	\$650	
75 <sup>th</sup>	\$1,211	\$1,255		\$735	\$728		\$625	\$625	
60 <sup>th</sup>	\$1,106	\$1,157		\$708	\$708		\$586	\$586	
50 <sup>th</sup>	\$1,050	\$1,100		\$699	\$699		\$586	\$560	
25 <sup>th</sup>	\$900	\$959		\$630	\$645		\$500	\$460	
10 <sup>th</sup>	\$735	\$830		\$595	\$600		\$419	\$300	
<b>TODDLER</b>									
<b>Hourly</b>	N=18	N=136	\$7.00	N=17	N=159	\$3.96	N=7	N=68	\$3.88
90 <sup>th</sup>	\$12.00	\$8.00		\$5.00	\$5.50		\$4.50	\$4.00	
75 <sup>th</sup>	\$8.00	\$6.50		\$4.50	\$5.00		\$4.00	\$4.00	
60 <sup>th</sup>	\$7.00	\$6.50		\$4.00	\$5.00		\$3.85	\$4.00	
50 <sup>th</sup>	\$6.50	\$6.25		\$3.50	\$4.50		\$3.50	\$3.85	
25 <sup>th</sup>	\$4.75	\$6.00		\$3.25	\$3.50		\$2.50	\$3.50	
10 <sup>th</sup>	\$3.90	\$4.00		\$2.75	\$3.00		\$2.50	\$2.50	

Table 2 (continued). 2014 Prices by 2014 Rate Areas for Center Care

Rate Area A			Rate Area B			Rate Area C			
	Facilities	Slots	Licensed Rate Maximums	Facilities	Slots	Licensed Rate Maximums	Facilities	Slots	Licensed Rate Maximums
<b>Monthly</b>	N=202	N=2462	\$1037	N=63	N=440	\$683	N=23	N=233	\$575
90 <sup>th</sup>	\$1,295	\$1,390		\$797	\$789		\$625	\$650	
75 <sup>th</sup>	\$1,146	\$1,237		\$725	\$715		\$600	\$600	
60 <sup>th</sup>	\$1,044	\$1,121		\$675	\$655		\$575	\$575	
50 <sup>th</sup>	\$996	\$1,067		\$650	\$645		\$575	\$575	
25 <sup>th</sup>	\$820	\$940		\$560	\$610		\$475	\$460	
10 <sup>th</sup>	\$695	\$800		\$530	\$560		\$415	\$300	
<b>PRE-SCHOOL AGE</b>									
<b>Hourly</b>	N=32	N=794	\$6.00	N=33	N=700	\$3.75	N=12	N=238	\$3.00
90 <sup>th</sup>	\$9.25	\$8.00		\$4.40	\$4.75		\$3.50	\$3.50	
75 <sup>th</sup>	\$7.00	\$6.75		\$4.00	\$4.00		\$3.38	\$3.25	
60 <sup>th</sup>	\$5.95	\$6.00		\$3.90	\$3.90		\$3.20	\$3.25	
50 <sup>th</sup>	\$5.00	\$5.95		\$3.50	\$3.75		\$2.88	\$3.20	
25 <sup>th</sup>	\$4.00	\$4.65		\$3.20	\$3.15		\$2.50	\$2.75	
10 <sup>th</sup>	\$3.60	\$4.00		\$2.75	\$2.75		\$2.45	\$2.50	
<b>Monthly</b>	N=281	N=8642	\$850	N=97	N=2403	\$560	N=28	N=667	\$453
90 <sup>th</sup>	\$1,060	\$1,079		\$653	\$637		\$555	\$550	
75 <sup>th</sup>	\$895	\$965		\$600	\$590		\$472	\$453	
60 <sup>th</sup>	\$850	\$865		\$560	\$555		\$450	\$430	
50 <sup>th</sup>	\$795	\$830		\$550	\$540		\$430	\$420	
25 <sup>th</sup>	\$670	\$700		\$500	\$505		\$388	\$280	
10 <sup>th</sup>	\$575	\$615		\$425	\$475		\$248	\$215	
<b>SCHOOL AGE SCHOOL YEAR</b>									
<b>Hourly</b>	N=30	N=725		N=26	N=496		N=13	N=209	
90 <sup>th</sup>	\$10.13	\$10.25		\$4.95	\$4.95		\$3.50	\$3.50	
75 <sup>th</sup>	\$8.00	\$9.25		\$4.00	\$4.75		\$3.50	\$3.50	
60 <sup>th</sup>	\$6.00	\$7.00		\$4.00	\$4.40		\$3.50	\$3.50	
50 <sup>th</sup>	\$5.73	\$6.00		\$3.95	\$4.00		\$3.25	\$3.25	
25 <sup>th</sup>	\$4.75	\$4.75		\$3.00	\$3.75		\$2.50	\$2.50	
10 <sup>th</sup>	\$4.10	\$4.20		\$2.85	\$3.00		\$2.50	\$2.50	

Table 2 (continued). 2014 Prices by 2014 Rate Areas for Center Care

Rate Area A			Rate Area B			Rate Area C			
	Facilities	Slots	Licensed Rate Maximums	Facilities	Slots	Licensed Rate Maximums	Facilities	Slots	Licensed Rate Maximums
<b>Monthly</b>	N=180	N=5963	\$544	N=40	N=1136	\$413	N=10	N=310	\$372
90 <sup>th</sup>	\$688	\$700		\$499	\$425		\$473	\$450	
75 <sup>th</sup>	\$528	\$513		\$355	\$334		\$445	\$375	
60 <sup>th</sup>	\$429	\$424		\$278	\$262		\$380	\$360	
50 <sup>th</sup>	\$417	\$417		\$262	\$262		\$368	\$360	
25 <sup>th</sup>	\$339	\$350		\$224	\$224		\$175	\$175	
10 <sup>th</sup>	\$267	\$295		\$195	\$170		\$156	\$160	

**SCHOOL AGE SUMMER**

<b>Hourly</b>	N=14	N=475	\$6.00	N=24	N=492	\$4.00	N=12	N=346	\$3.35
90 <sup>th</sup>	\$13.64	\$9.25		\$6.00	\$4.75		\$3.50	\$3.50	
75 <sup>th</sup>	\$9.25	\$6.00		\$4.13	\$4.40		\$3.23	\$3.15	
60 <sup>th</sup>	\$6.00	\$6.00		\$4.00	\$4.00		\$3.15	\$3.15	
50 <sup>th</sup>	\$5.98	\$5.95		\$4.00	\$4.00		\$2.88	\$3.15	
25 <sup>th</sup>	\$4.00	\$4.00		\$3.00	\$3.00		\$2.50	\$2.50	
10 <sup>th</sup>	\$4.00	\$4.00		\$2.85	\$2.75		\$2.50	\$2.25	
<b>Monthly</b>	N=110	N=3930	\$725	N=36	N=1010	\$550	N=11	N=347	\$495
90 <sup>th</sup>	\$940	\$1,060		\$610	\$600		\$525	\$525	
75 <sup>th</sup>	\$800	\$850		\$573	\$570		\$500	\$445	
60 <sup>th</sup>	\$698	\$737		\$550	\$549		\$445	\$400	
50 <sup>th</sup>	\$635	\$690		\$547	\$526		\$400	\$385	
25 <sup>th</sup>	\$500	\$520		\$481	\$495		\$385	\$378	
10 <sup>th</sup>	\$473	\$488		\$435	\$450		\$378	\$280	

Table 3. 2014 Prices by 2014 Rate Areas for Certified Family Care

	Rate Area A			Rate Area B			Rate Area C		
	Facilities	Slots	Licensed Rate Maximums	Facilities	Slots	Licensed Rate Maximums	Facilities	Slots	Licensed Rate Maximums
<b>INFANT</b>									
<b>Hourly</b>									
90 <sup>th</sup>	N=41	N=108	\$6.00	N=31	N=61	\$3.60	N=10	N=26	\$3.50
75 <sup>th</sup>	\$6.50	\$6.00		\$4.05	\$4.00		\$3.50	\$3.50	
60 <sup>th</sup>	\$5.00	\$5.00		\$3.60	\$3.25		\$3.50	\$3.50	
50 <sup>th</sup>	\$4.50	\$4.25		\$3.00	\$3.00		\$3.00	\$3.50	
25 <sup>th</sup>	\$4.00	\$4.00		\$3.00	\$3.00		\$3.00	\$3.00	
10 <sup>th</sup>	\$3.75	\$3.00		\$2.75	\$2.75		\$2.50	\$3.00	
	\$3.00	\$3.00		\$2.50	\$2.50		\$2.50	\$2.50	
<b>Monthly</b>			\$900			\$550			\$550
90 <sup>th</sup>	N=153	N=433		N=76	N=145		N=10	N=24	
75 <sup>th</sup>	\$1,200	\$1,230		\$900	\$850		\$563	\$575	
60 <sup>th</sup>	\$950	\$1,000		\$600	\$625		\$500	\$500	
50 <sup>th</sup>	\$900	\$900		\$575	\$590		\$445	\$450	
25 <sup>th</sup>	\$880	\$900		\$550	\$550		\$433	\$440	
10 <sup>th</sup>	\$715	\$790		\$500	\$500		\$400	\$400	
	\$575	\$635		\$455	\$455		\$370	\$400	
<b>TODDLER</b>									
<b>Hourly</b>			\$5.00			\$3.55			\$3.48
90 <sup>th</sup>	N=53	N=34		N=37	N=82		N=13	N=21	
75 <sup>th</sup>	\$7.00	\$5.50		\$4.05	\$4.00		\$3.50	\$5.50	
60 <sup>th</sup>	\$5.00	\$5.50		\$3.67	\$3.67		\$3.25	\$3.00	
50 <sup>th</sup>	\$4.50	\$5.00		\$3.50	\$3.50		\$3.00	\$3.00	
25 <sup>th</sup>	\$4.00	\$4.50		\$3.00	\$3.00		\$3.00	\$2.50	
10 <sup>th</sup>	\$3.25	\$4.00		\$3.00	\$2.75		\$2.50	\$2.50	
	\$3.00	\$3.25		\$2.50	\$2.65		\$2.50	\$2.50	



Table 3 (continued). 2014 Prices by 2014 Rate Areas for Certified Family Care (continued)

Rate Area A			Rate Area B			Rate Area C			
	Facilities	Slots	Licensed Rate Maximums	Facilities	Slots	Licensed Rate Maximums	Facilities	Slots	Licensed Rate Maximums
<b>Monthly</b>	N=180	N=404	\$900	N=83	N=150	\$532	N=13	N=24	\$475
90 <sup>th</sup>	\$1,178	\$1,230		\$795	\$795		\$550	\$575	
75 <sup>th</sup>	\$900	\$1,000		\$600	\$600		\$500	\$563	
60 <sup>th</sup>	\$900	\$900		\$550	\$550		\$450	\$550	
50 <sup>th</sup>	\$833	\$900		\$532	\$532		\$440	\$500	
25 <sup>th</sup>	\$670	\$735		\$480	\$500		\$400	\$440	
10 <sup>th</sup>	\$545	\$550		\$450	\$450		\$375	\$378	
<b>PRE-SCHOOL AGE</b>									
<b>Hourly</b>	N=57	N=200	\$5.00	N=41	N=245	\$3.50	N=13	N=48	\$3.38
90 <sup>th</sup>	\$7.00	\$7.00		\$4.00	\$4.00		\$3.50	\$3.50	
75 <sup>th</sup>	\$5.00	\$5.00		\$3.67	\$3.70		\$3.25	\$3.00	
60 <sup>th</sup>	\$4.50	\$5.00		\$3.50	\$3.50		\$2.75	\$2.75	
50 <sup>th</sup>	\$4.00	\$4.38		\$3.00	\$3.00		\$2.50	\$2.50	
25 <sup>th</sup>	\$3.00	\$4.00		\$2.85	\$2.75		\$2.50	\$2.50	
10 <sup>th</sup>	\$3.00	\$3.00		\$2.50	\$2.50		\$2.50	\$2.25	
<b>Monthly</b>	N=207	N=1134	\$785	N=89	N=517	\$500	N=12	N=56	\$450
90 <sup>th</sup>	\$950	\$1,000		\$750	\$750		\$500	\$500	
75 <sup>th</sup>	\$825	\$870		\$550	\$550		\$490	\$450	
60 <sup>th</sup>	\$785	\$800		\$510	\$500		\$450	\$400	
50 <sup>th</sup>	\$750	\$785		\$500	\$500		\$420	\$400	
25 <sup>th</sup>	\$610	\$648		\$450	\$475		\$364	\$378	
10 <sup>th</sup>	\$500	\$530		\$425	\$435		\$340	\$340	
<b>SCHOOL AGE SCHOOL YEAR</b>									
<b>Hourly</b>	N=45	N=286		N=36	N=187		N=6	N=44	
90 <sup>th</sup>	\$6.00	\$5.00		\$4.00	\$4.00		\$3.50	\$3.50	
75 <sup>th</sup>	\$4.50	\$4.50		\$3.55	\$3.50		\$3.25	\$3.50	
60 <sup>th</sup>	\$4.00	\$4.00		\$3.25	\$3.25		\$3.00	\$3.50	
50 <sup>th</sup>	\$4.00	\$4.00		\$3.00	\$3.00		\$2.75	\$3.50	
25 <sup>th</sup>	\$3.00	\$3.00		\$3.00	\$3.00		\$2.50	\$3.00	
10 <sup>th</sup>	\$2.64	\$2.64		\$2.50	\$2.50		\$2.25	\$2.50	

Table 3 (continued). 2014 Prices by 2014 Rate Areas for Certified Family Care

Rate Area A			Rate Area B			Rate Area C			
	Facilities	Slots	Licensed Rate Maximums	Facilities	Slots	Licensed Rate Maximums	Facilities	Slots	Licensed Rate Maximums
<b>Monthly</b>	N=68	N=394	\$488	N=29	N=147	\$413	N=5	N=24	\$330
90 <sup>th</sup>	\$690	\$688		\$650	\$650		\$600	\$600	
75 <sup>th</sup>	\$650	\$650		\$513	\$513		\$450	\$600	
60 <sup>th</sup>	\$600	\$600		\$450	\$450		\$425	\$600	
50 <sup>th</sup>	\$600	\$550		\$425	\$450		\$400	\$450	
25 <sup>th</sup>	\$450	\$420		\$310	\$375		\$400	\$400	
10 <sup>th</sup>	\$365	\$350		\$200	\$225		\$378	\$378	
<b>SCHOOL AGE SUMMER</b>									
<b>Hourly</b>	N=37	N=236	\$4.50	N=26	N=156	\$3.25	N=9	N=72	\$3.10
90 <sup>th</sup>	\$5.00	\$5.00		\$4.00	\$4.50		\$3.50	\$3.50	
75 <sup>th</sup>	\$4.00	\$4.50		\$3.70	\$3.75		\$3.00	\$3.50	
60 <sup>th</sup>	\$4.00	\$4.00		\$3.00	\$3.00		\$2.75	\$3.00	
50 <sup>th</sup>	\$3.50	\$4.00		\$3.00	\$3.00		\$2.50	\$2.75	
25 <sup>th</sup>	\$3.00	\$3.00		\$2.75	\$2.75		\$2.50	\$2.50	
10 <sup>th</sup>	\$2.64	\$2.64		\$2.50	\$2.50		\$2.25	\$2.50	
<b>Monthly</b>	N=84	N=557	\$650	N=52	N=346	\$550	N=8	N=53	\$440
90 <sup>th</sup>	\$700	\$700		\$575	\$575		\$600	\$600	
75 <sup>th</sup>	\$650	\$650		\$535	\$545		\$420	\$400	
60 <sup>th</sup>	\$650	\$650		\$500	\$500		\$400	\$400	
50 <sup>th</sup>	\$600	\$600		\$500	\$500		\$390	\$380	
25 <sup>th</sup>	\$535	\$550		\$450	\$450		\$359	\$340	
10 <sup>th</sup>	\$480	\$485		\$400	\$400		\$335	\$335	





Oregon State University Family Policy Program,  
Oregon Child Care Research Partnership  
July 2014

DHS 9837 (Revised 2/2015)

**This document can be provided upon request in an alternate format for individuals with disabilities or in a language other than English for people with limited English skills. To request this publication in another format or language, contact the Child Care policy unit by email at [childcare.policy@state.or.us](mailto:childcare.policy@state.or.us) or call 503-945-6110.**