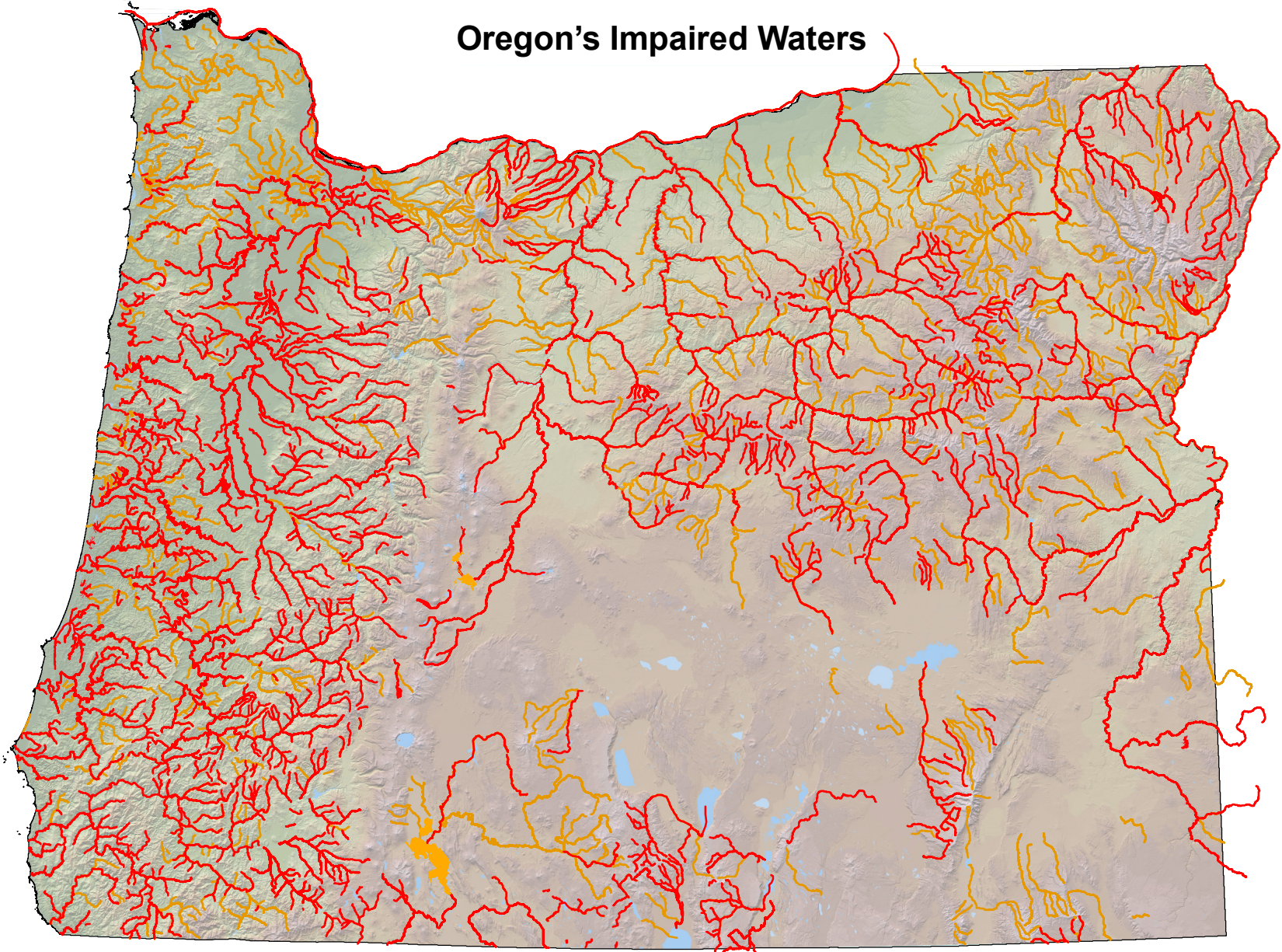



# Oregon's Impaired Waters




## 2004/2006 Water Quality Limited Waters

**Impaired by one or more pollutants - needs TMDL (303(d) List)**


**Total - 1,117 streams, lakes, reservoirs**


 14,905 miles

 31 lakes and reservoirs; 46,753 acres

**Impaired - does not need TMDL (TMDL approved or impaired by non-pollutant)**

**Total - 1,231 streams, lakes, reservoirs**

 16,736 miles

 21 lakes and reservoirs; 96,799 acres



**Note:** This map shows all waters impaired by one or more pollutants in Oregon. Waters are depicted as needing a TMDL until TMDLs have been completed addressing all impairing pollutants.

