



State of Oregon Department of Environmental Quality

Appendix C – Supporting Maps for Updates to Core Cold Water Use

May 2023

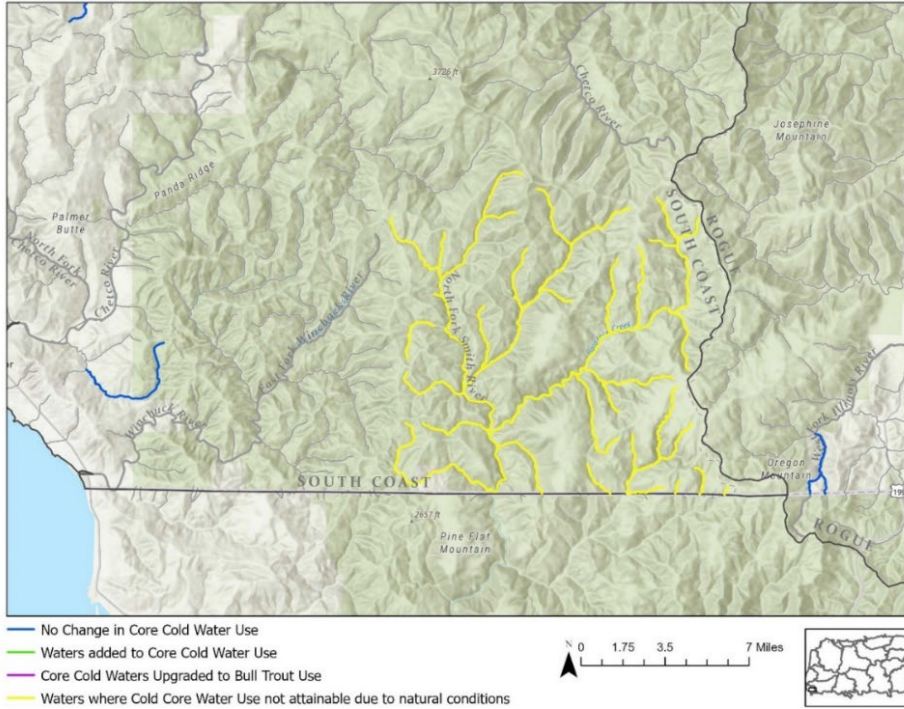


Figure C-0-1. Waters where Core Cold Water Use is unattainable due to naturally occurring temperatures, North Fork Smith River and tributaries, South Coast Basin

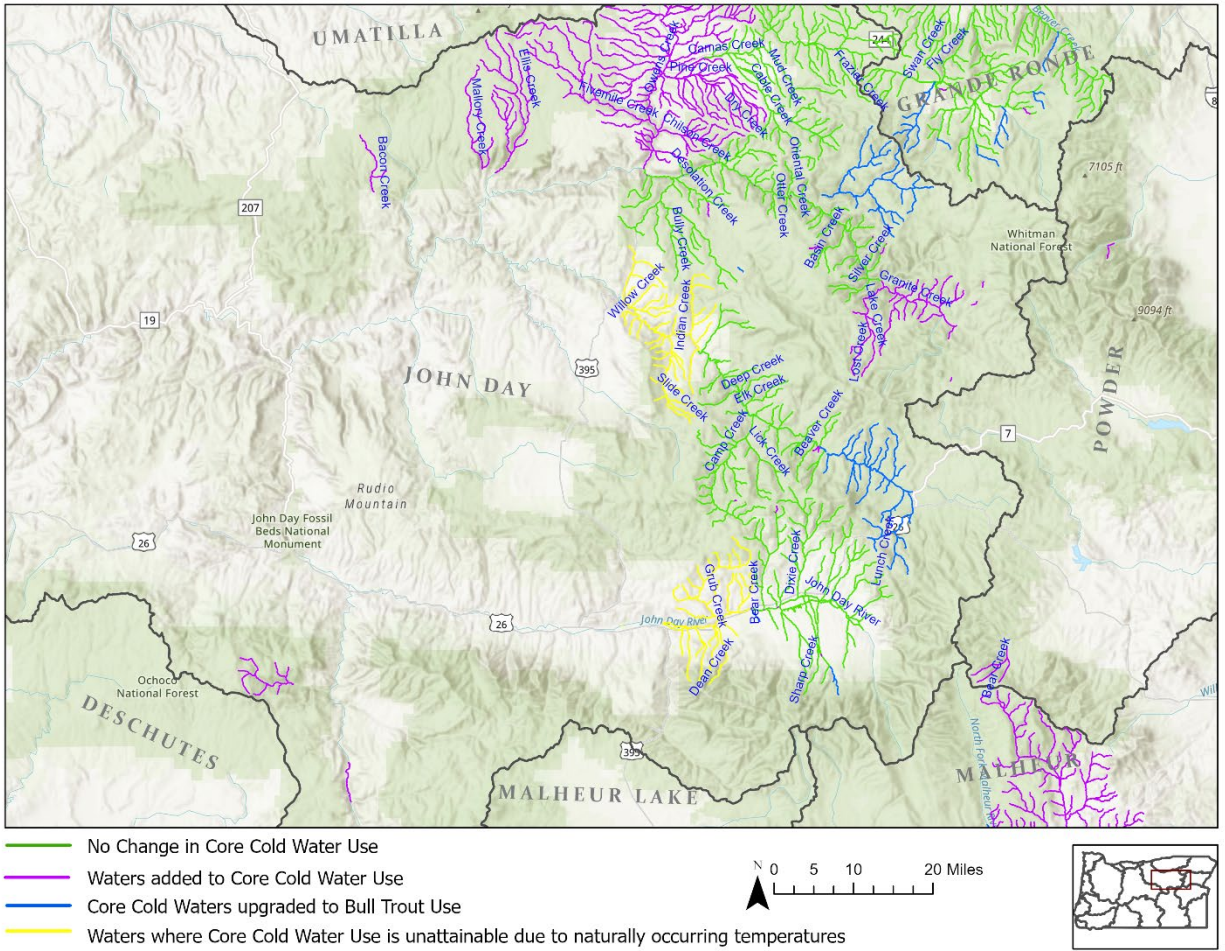
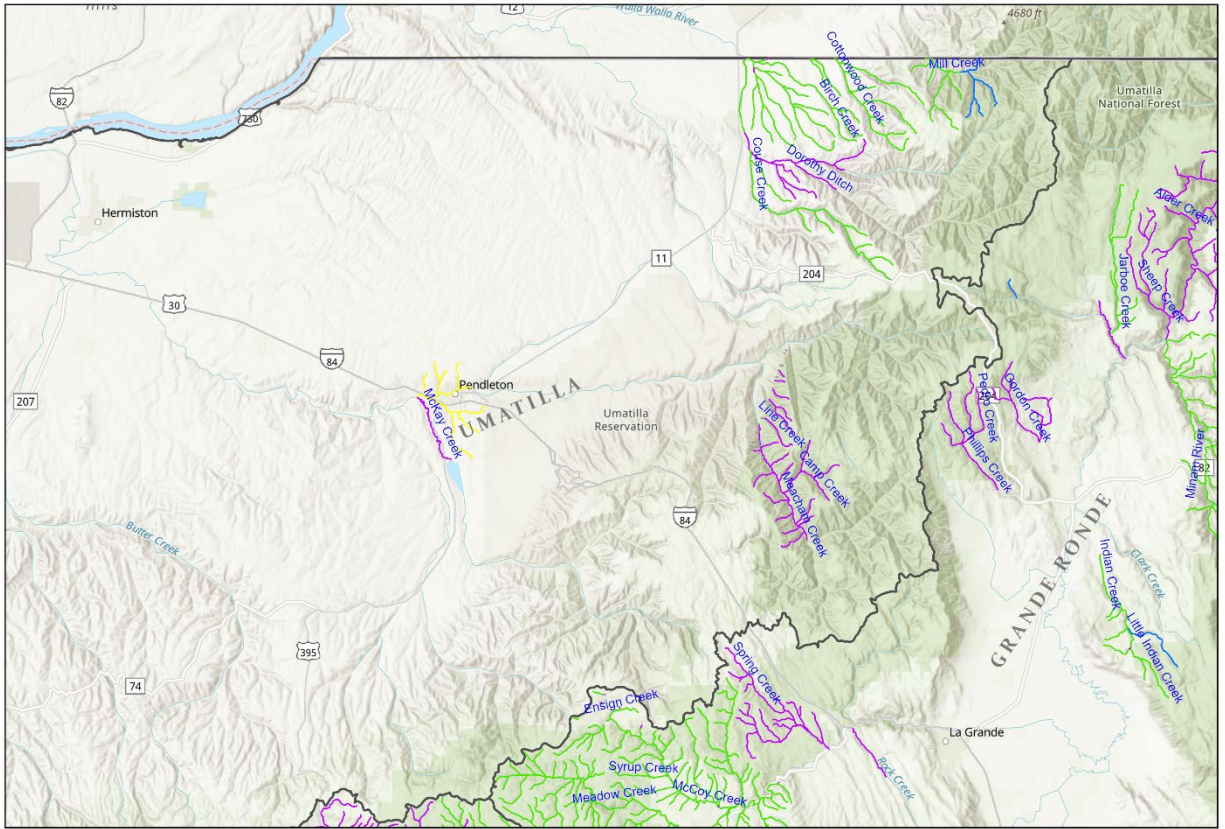


Figure C-0-2. Waters where Core Cold Water Use is unattainable due to naturally occurring temperatures, John Day Basin



- No Change in Core Cold Water Use
- Waters added to Core Cold Water Use
- Change to more stringent use
- Waters where Core Cold Water Use is unattainable due to naturally occurring temperatures

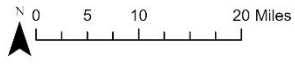


Figure C-0-3. Waters where Core Cold Water Use is unattainable due to naturally occurring temperatures, Umatilla Basin

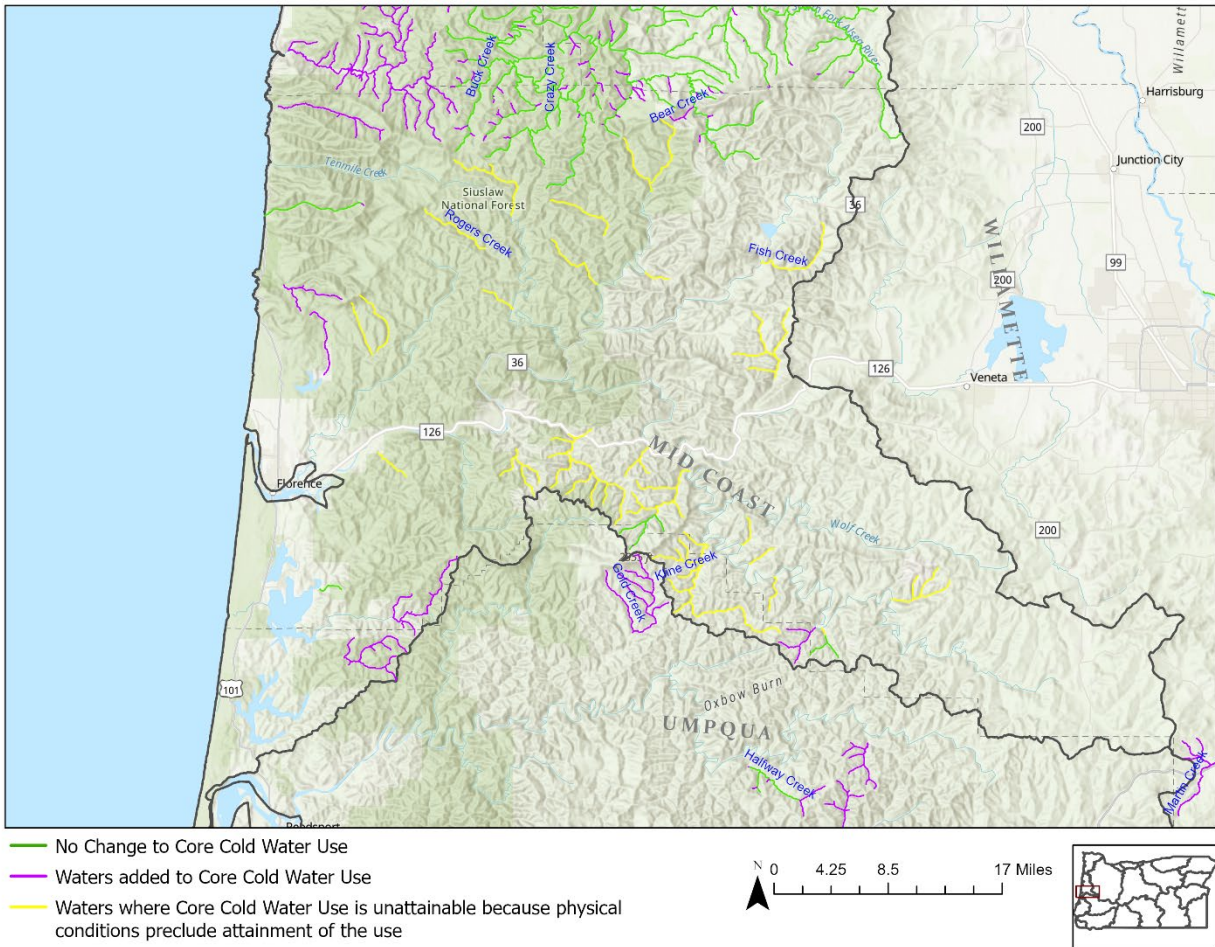
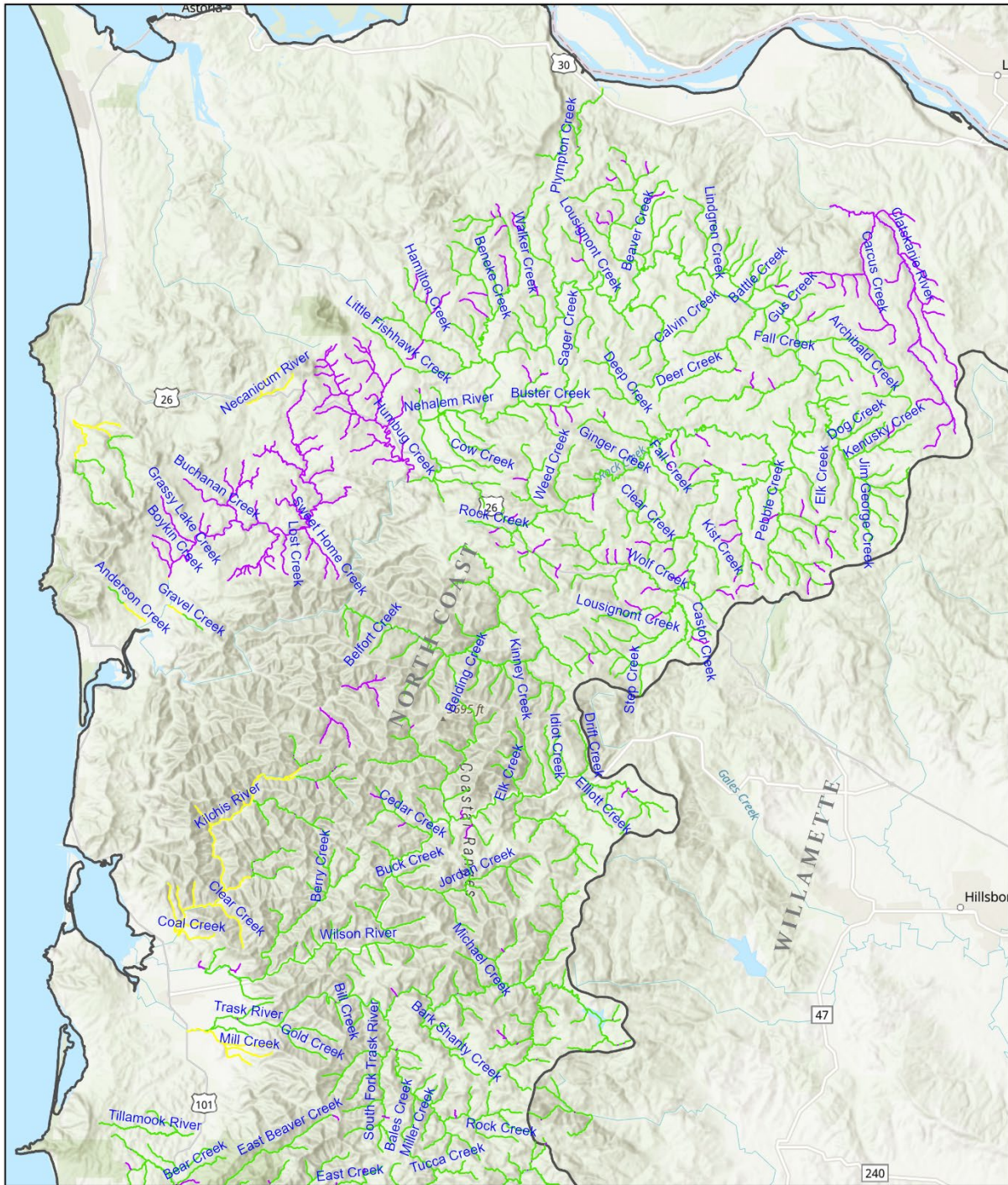


Figure C-0-4. Waters where Core Cold Water Use is unattainable because physical conditions preclude attainment of the use, Mid Coast Basin.



- No Change to Core Cold Water Use
- Waters added to Core Cold Water Use
- Waters where Core Cold Water Use is unattainable because physical conditions preclude attainment of the use

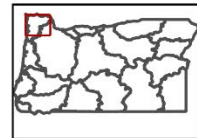
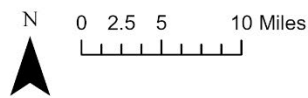


Figure C-5. Waters where Core Cold Water Use is unattainable because physical conditions preclude attainment of the use, North Coast Basin.

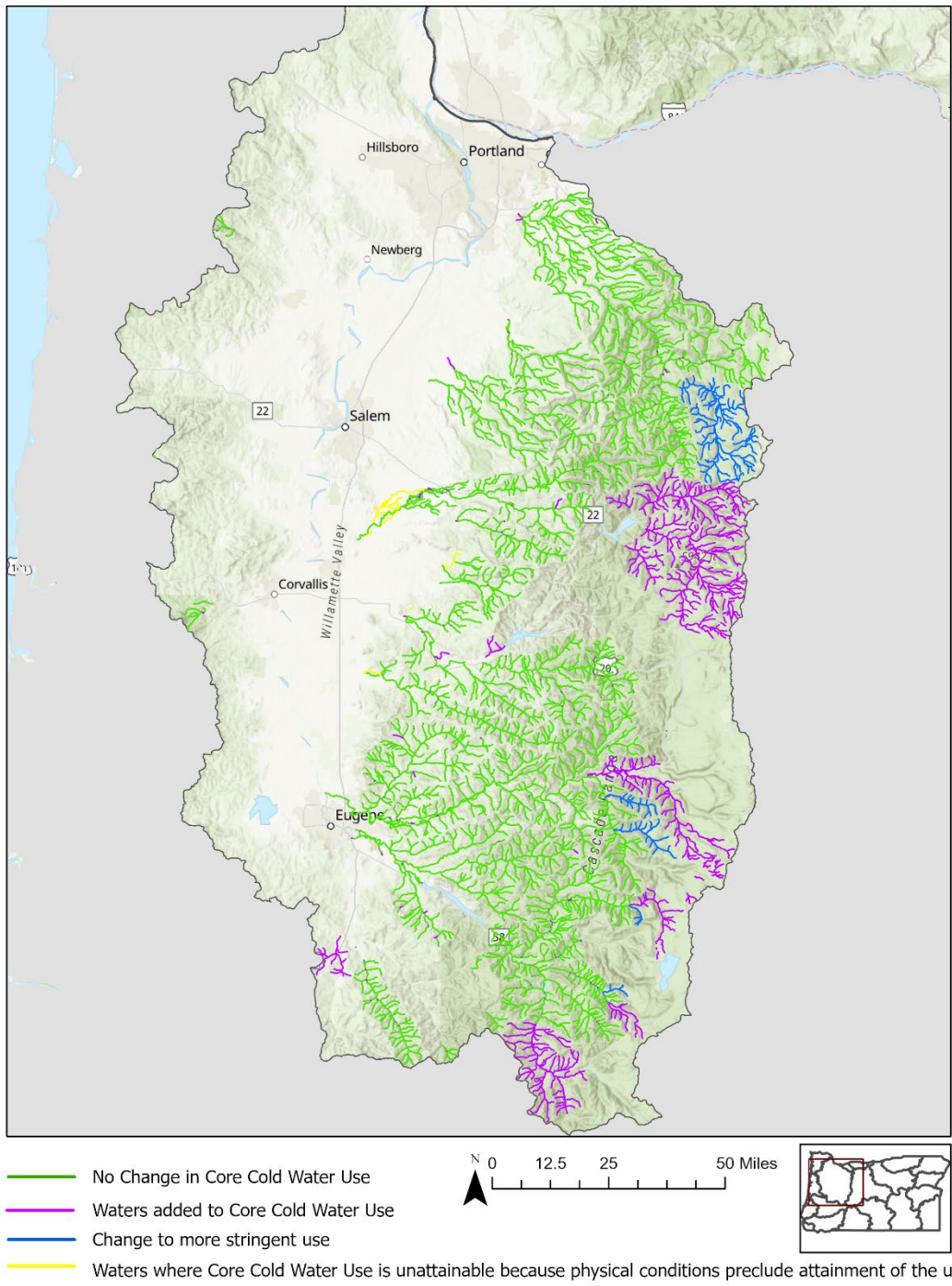


Figure C-6. Waters where Core Cold Water Use is unattainable due to physical conditions, Willamette Basin.

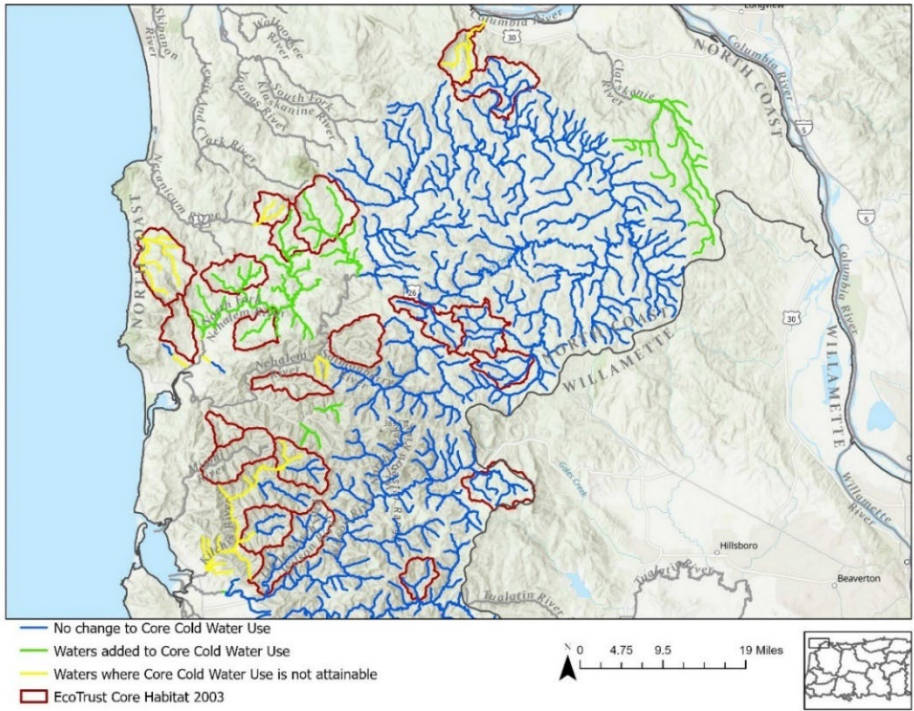


Figure C-0-7. Waters where Core Cold Water Use is not attainable due to physical conditions, North Coast Basin.

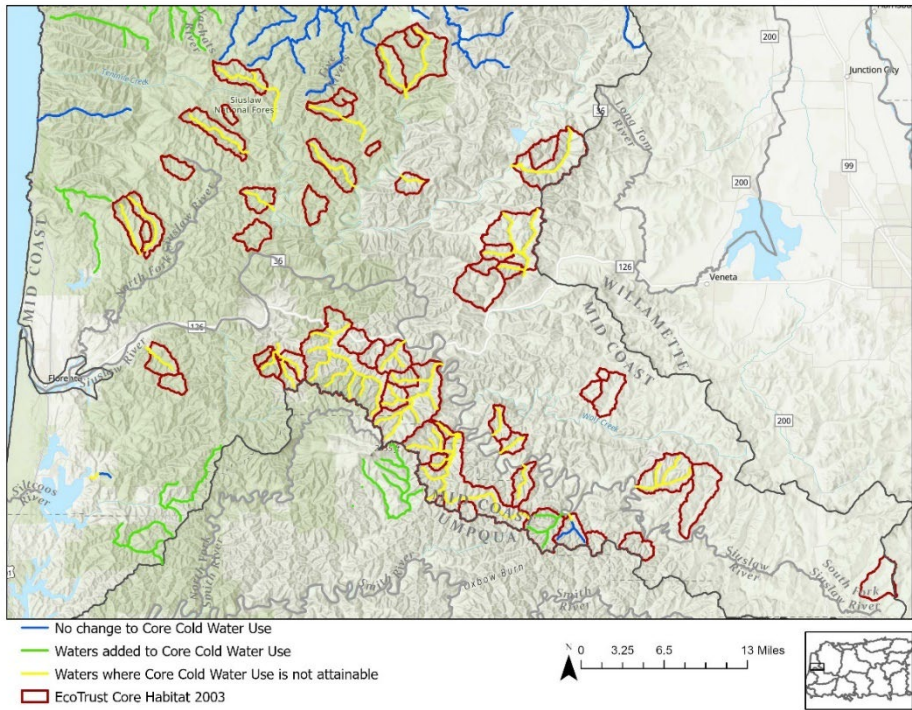


Figure C-0-8. Waters where Core Cold Water Use is not attainable due to physical conditions, Mid Coast Basin.

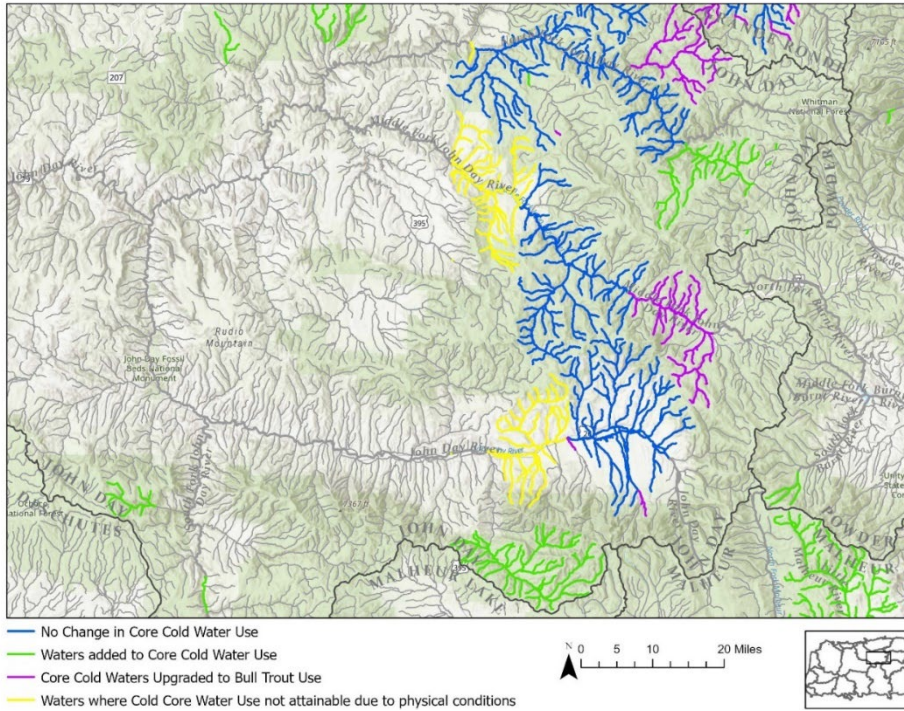
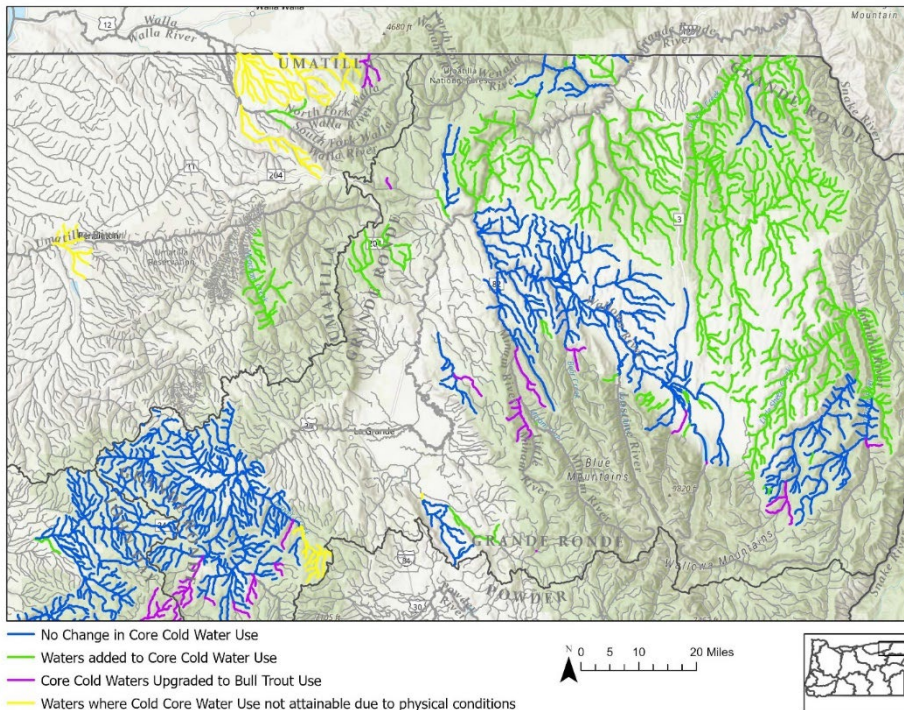


Figure C-0-9. Waters where Core Cold Water Use is Unattainable Due to Physical Conditions, John Day River Basin.



NOTE: We found a couple of errors from this map at the last minute. We are not proposing to change CCW use in the Walla Walla area near the Washington border or the Beaver Creek area, Grand Ronde watershed near the bottom of the map. So the only proposed change on the map is the Umatilla River around Pendleton.

Figure C-0-10. Waters where Core Cold Water Use is Unattainable Due to Physical Conditions, Umatilla and Grand Ronde Basins.

Table C-1. Excerpt from ODFW Timing Table, John Day River above Canyon Creek, indicating Bull Trout FMO Use Does Not Occur During July and August. See Figure C-6.

Waterway ID: JohnDay01												
Life Stage/Activity/Species	Jan	Feb	Mar	Apr	May	Jun	Jul	Aug	Sep	Oct	Nov	Dec
Adult Fluvial or Adfluvial Migration												
Bull Trout Fluvial												
Westslope Cutthroat Trout Fluvial												
Redband (Native Rainbow) Trout												
Western Brook Lamprey - Resident												
	Represents periods of peak use based on professional opinion.											
	Represents lesser level of use based on professional opinion.											
	Represents periods of presence, either with no level of use OR uniformly distributed level of use indicated											

Table C-2. Excerpts from ODFW Timing Table, Middle Fork John Day River above US Highway 395, indicating Bull Trout FMO Use Does Not Occur During July and August. See Figure C-6.

Waterway ID: JohnDay03												
Life Stage/Activity/Species	Jan	Feb	Mar	Apr	May	Jun	Jul	Aug	Sep	Oct	Nov	Dec
Adult Fluvial or Adfluvial Migration												
Bull Trout Fluvial												
Red Band Trout Fluvial												
Western Brook Lamprey - Resident												
	Represents periods of peak use based on professional opinion.											
	Represents lesser level of use based on professional opinion.											
	Represents periods of presence, either with no level of use OR uniformly distributed level of use indicated											

Table C-3. Excerpts from ODFW Timing Table, Umatilla River, Cayuse to Mouth, indicating Bull Trout FMO Use Does Not Occur During July and August. See Figure C-7.

Timing Unit ID: 10202												
Life Stage/Activity/Species	Jan	Feb	Mar	Apr	May	Jun	Jul	Aug	Sep	Oct	Nov	Dec
Adult Fluvial or Adfluvial Migration												
Redband (Native Rainbow) Trout												
Bull Trout												
	Represents periods of peak use based on professional opinion.											
	Represents lesser level of use based on professional opinion.											
	Represents periods of presence, either with no level of use OR uniformly distributed level of use indicated											

Translation or other formats

[Español](#) | [한국어](#) | [繁體中文](#) | [Русский](#) | [Tiếng Việt](#) | [العربية](#)
 800-452-4011 | TTY: 711 | deqinfo@deq.oregon.gov

Non-discrimination statement

DEQ does not discriminate on the basis of race, color, national origin, disability, age or sex in administration of its programs or activities. Visit DEQ's [Civil Rights and Environmental Justice page](#).