



State of Oregon Department of Environmental Quality

Appendix D – Maps for Updates to Salmon and Trout Migration Use

May 2023

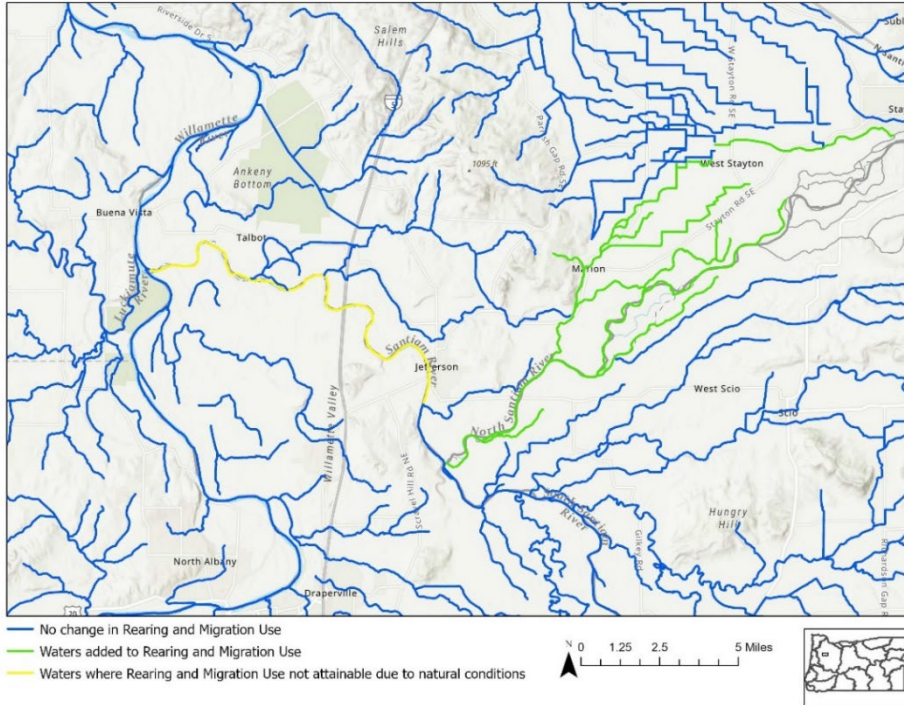


Figure D-1. Waters that cannot attain salmon and trout rearing and migration use due to natural conditions, Santiam River, Willamette Basin.

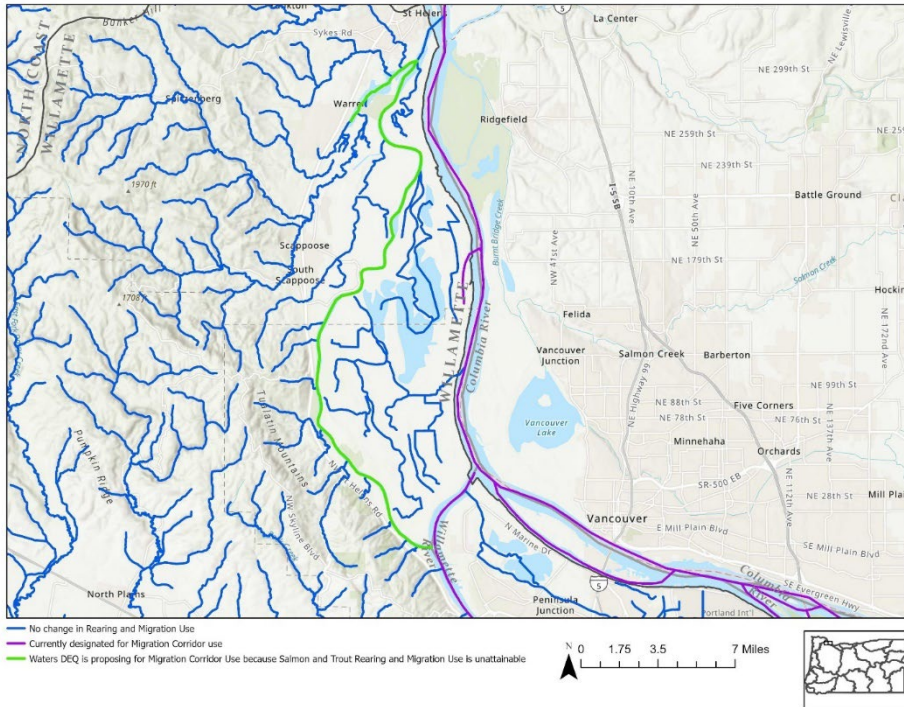


Figure D-2. Waters that cannot attain salmon and trout rearing and migration use due to natural conditions, Multnomah Channel and Scappoose Bay, Willamette Basin.

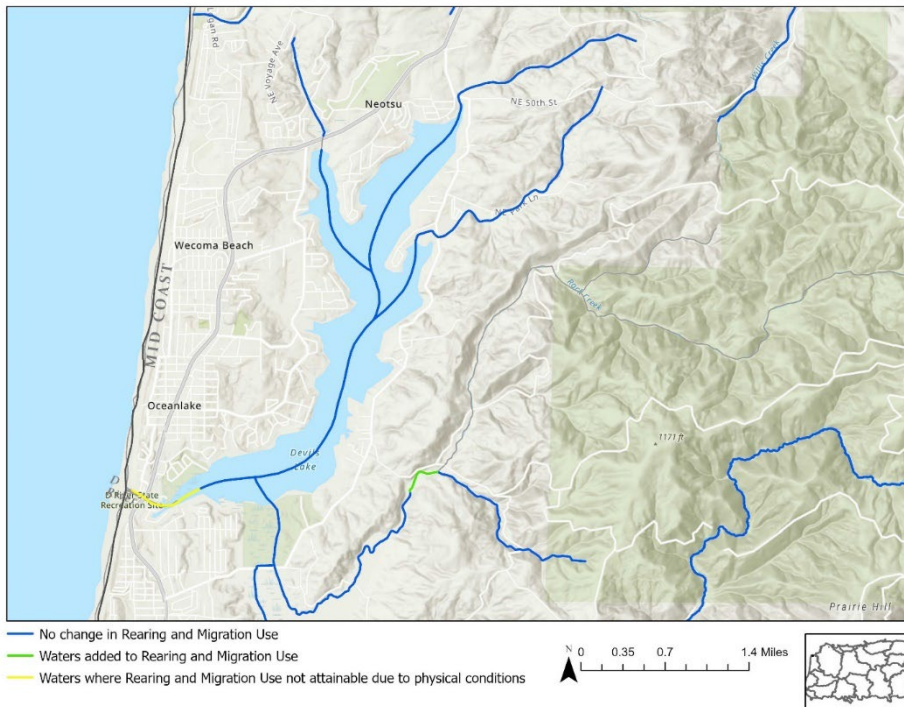


Figure D-3. Waters that cannot attain Salmon and Trout Rearing and Migration Use due to natural conditions, D River, Mid Coast Basin.

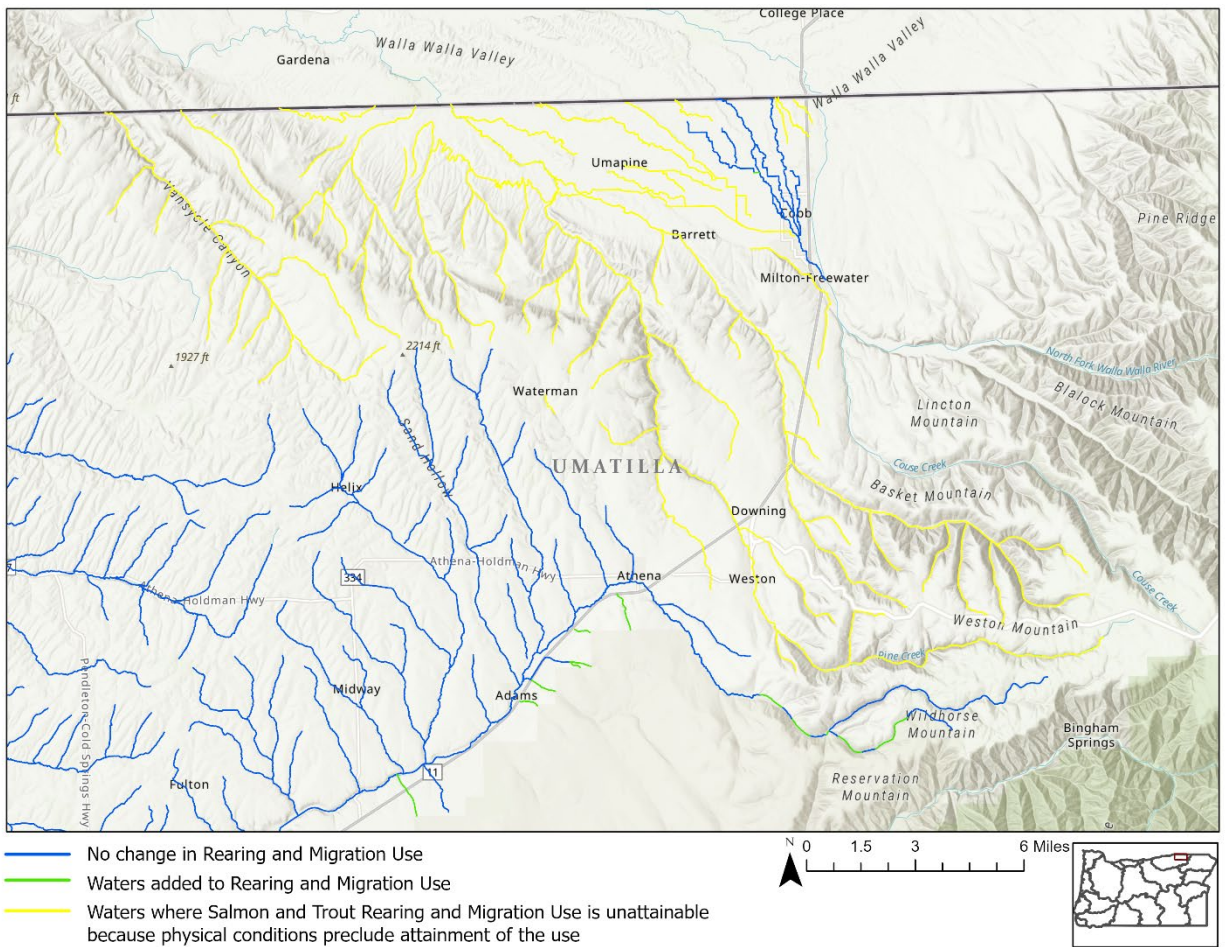


Figure D-4. Waters that cannot attain Salmon and Trout Rearing and Migration Use due to physical conditions, Walla Walla Basin.

Translation or other formats

[Español](#) | [한국어](#) | [繁體中文](#) | [Русский](#) | [Tiếng Việt](#) | [العربية](#)

800-452-4011 | TTY: 711 | deqinfo@deq.oregon.gov

Non-discrimination statement

DEQ does not discriminate on the basis of race, color, national origin, disability, age or sex in administration of its programs or activities. Visit DEQ's [Civil Rights and Environmental Justice page](#).