

DEQ 2022 Asbestos Fee Rulemaking Fiscal Advisory Committee Meeting

Jan. 18, 2022

Agenda

1 p.m.	Welcome <ul style="list-style-type: none"> Logistics Agenda review 	10 min	1 – 1:10 p.m.
1:10 p.m.	Introductions	20 min	1:10 – 1:30 p.m.
1:30 p.m.	Overview of rulemaking	10 min	1:30 – 1:40 p.m.
1:40 p.m.	Discussion <ul style="list-style-type: none"> Rulemaking timeline Program funding background Discussion questions Fee increase options and program revenue 	60 min	1:40 – 2:40 p.m.
2:40 p.m.	Break	15 min	2:40 – 2:55 p.m.
2:55 p.m.	Advisory Committee Input <ul style="list-style-type: none"> Input on proposed asbestos fee rule changes Opportunity to identify fee increase issues not addressed at this meeting 	25 min	2:55 – 3:20 p.m.
3:20 p.m.	Public Feedback Opportunity <ul style="list-style-type: none"> Please note this may occur earlier or later depending on the timing of the rest of the meeting. 	20 min	3:20 – 3:40 p.m.
3:40 p.m.	Wrap Up <ul style="list-style-type: none"> Additional discussion Roundtable remarks 	20 min	3:40 – 4 p.m.
4 p.m.	Adjourn meeting		4 p.m.

Advisory Committee Charter

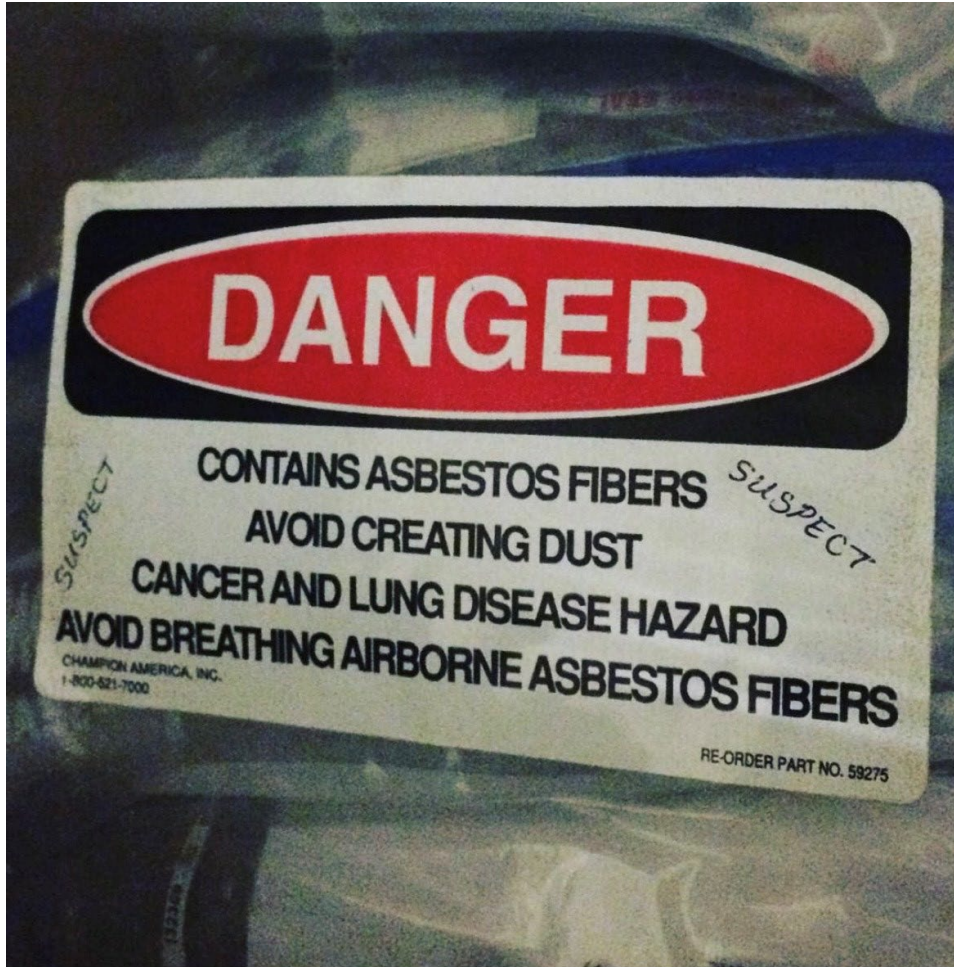
DEQ Facilitator

- Encourages open, candid dialogue and innovation by listening to all ideas.
- Recognizes when the discussion is outside the scope of the meeting and steers the discussion back to the focus of the meeting.

Committee Members

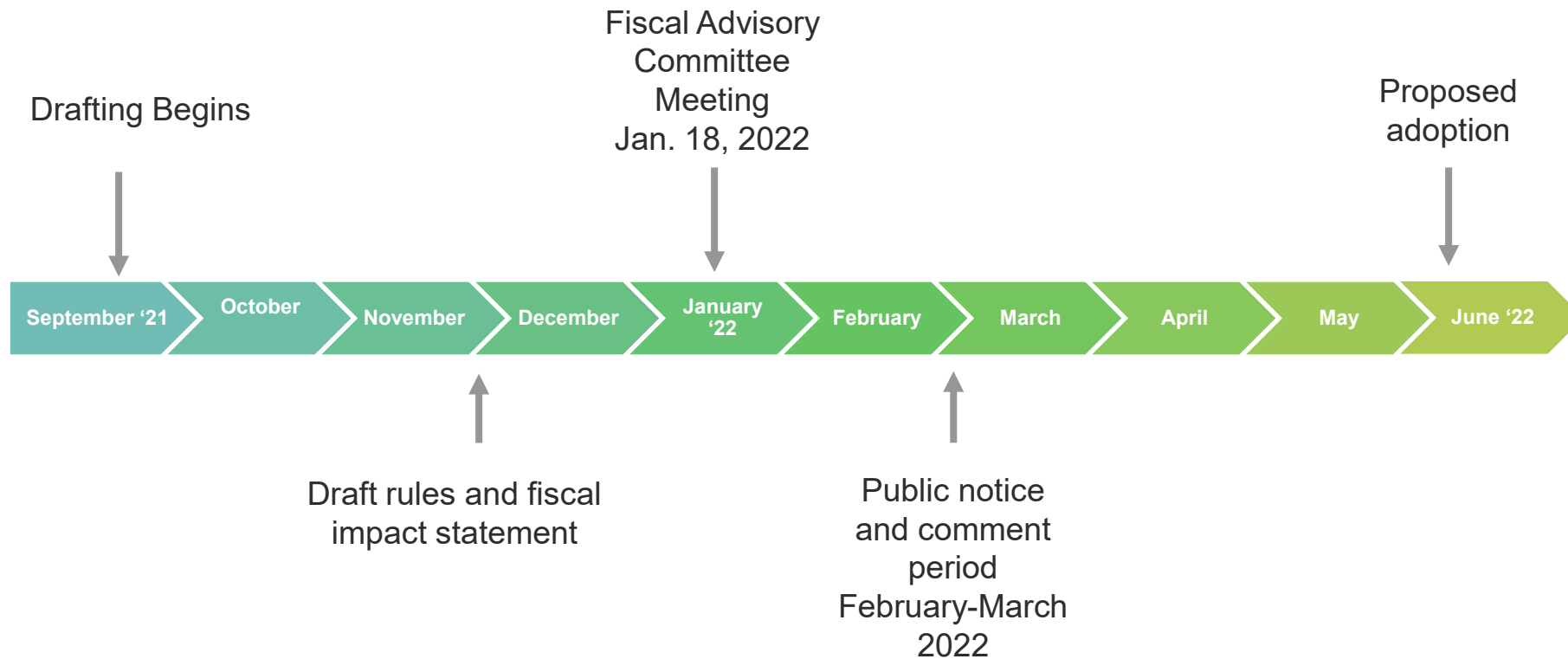
- Stays focused on the specific agenda topics;
- Communicates constructively and in good faith and accurately;
- Treats everyone and his or her perspectives with respect and assumes good intentions when perspectives differ;
- Allows one person to speak at a time; and
- Is courteous by not engaging in sidebar discussions.

Introduction and Overview of this rulemaking



- Name
- Your interest in Asbestos Program fee increase
- Your organization

Asbestos rulemaking timeline

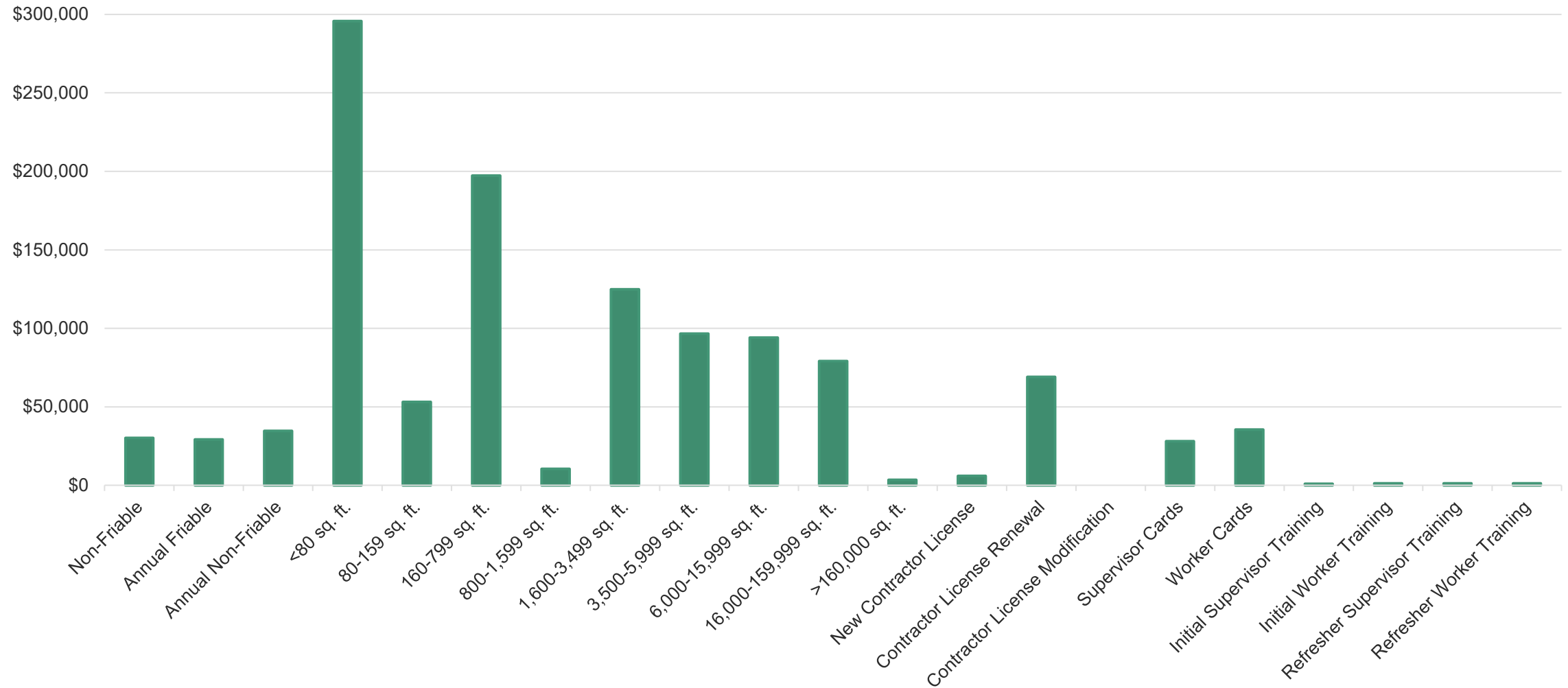


Background

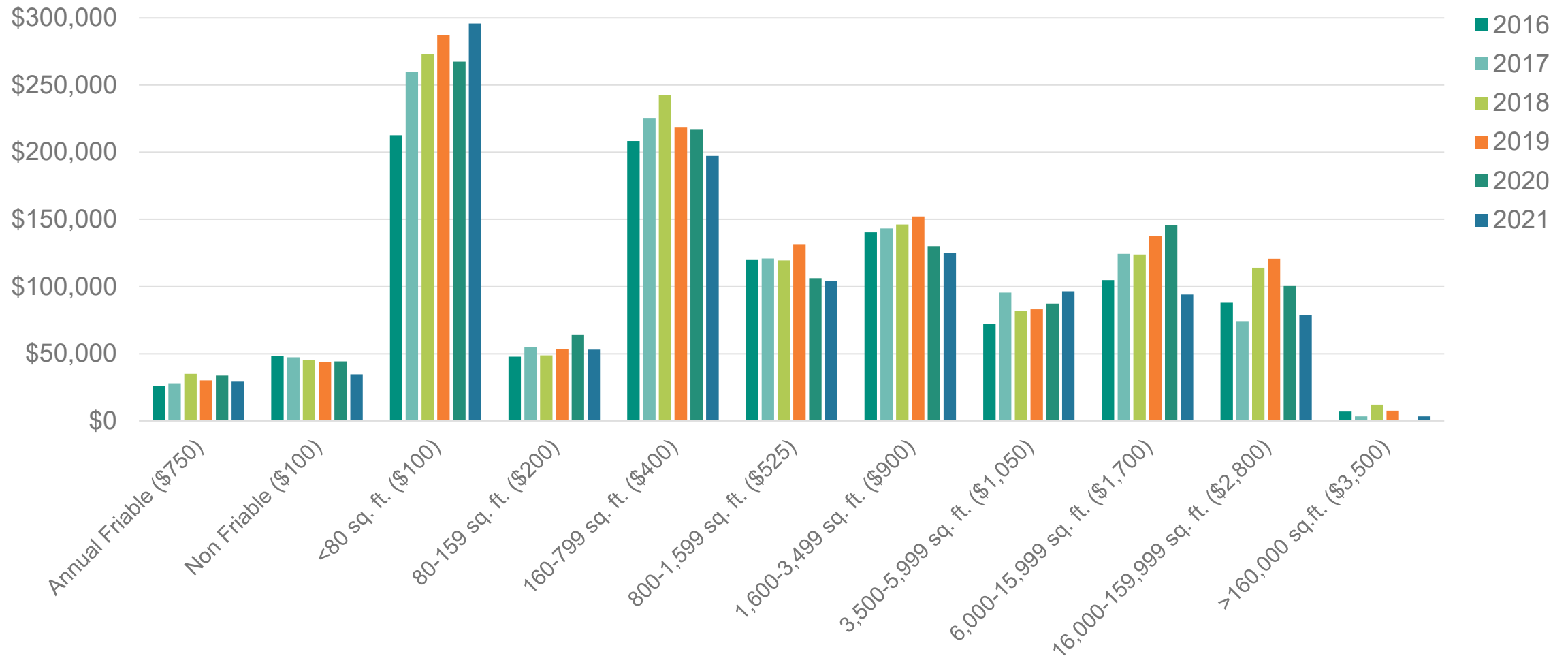
- 1985 – Asbestos program established
- 1987 – Oregon State Legislature approved the licensing program
- 1992 – only fee increase for licensing, certification, and training provider accreditation
- 2007 – most recent fee increase for project notifications



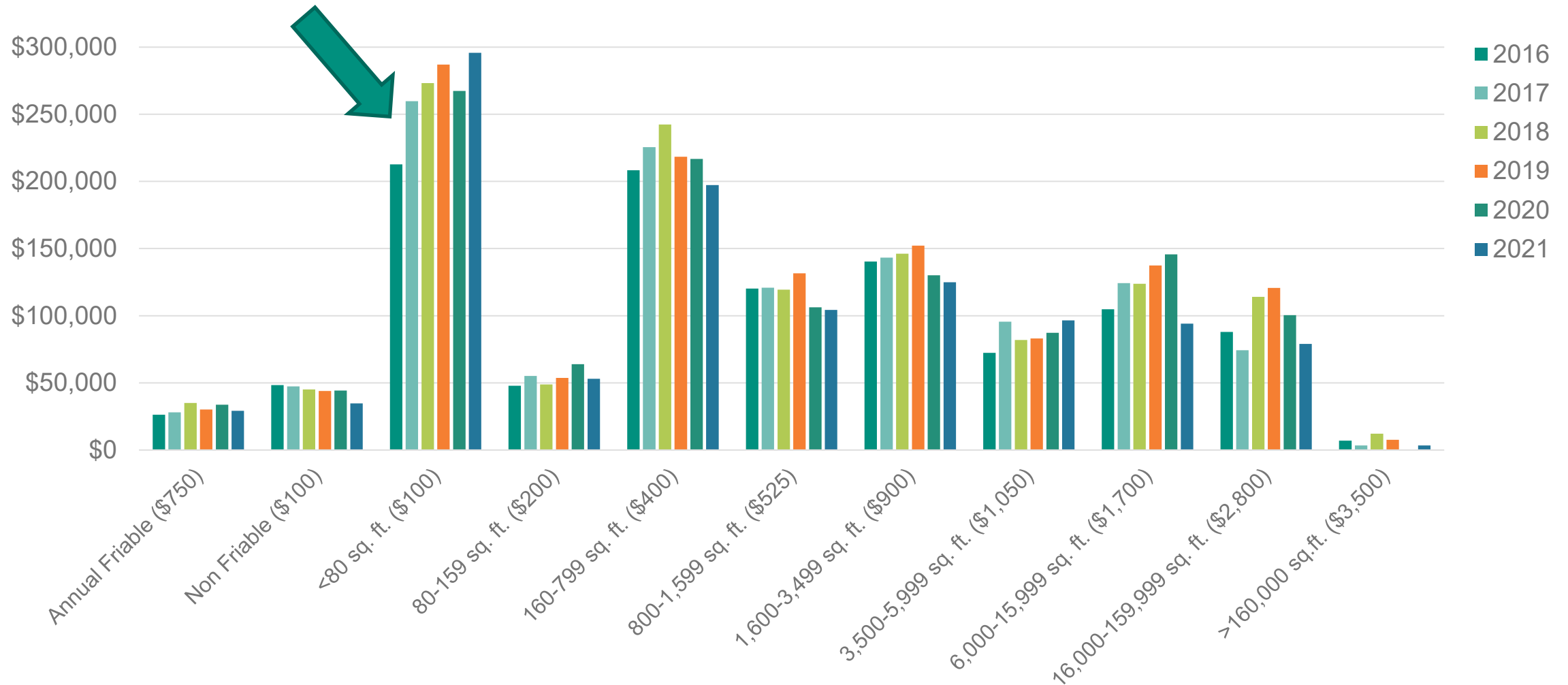
Asbestos Program Fees FY 2021



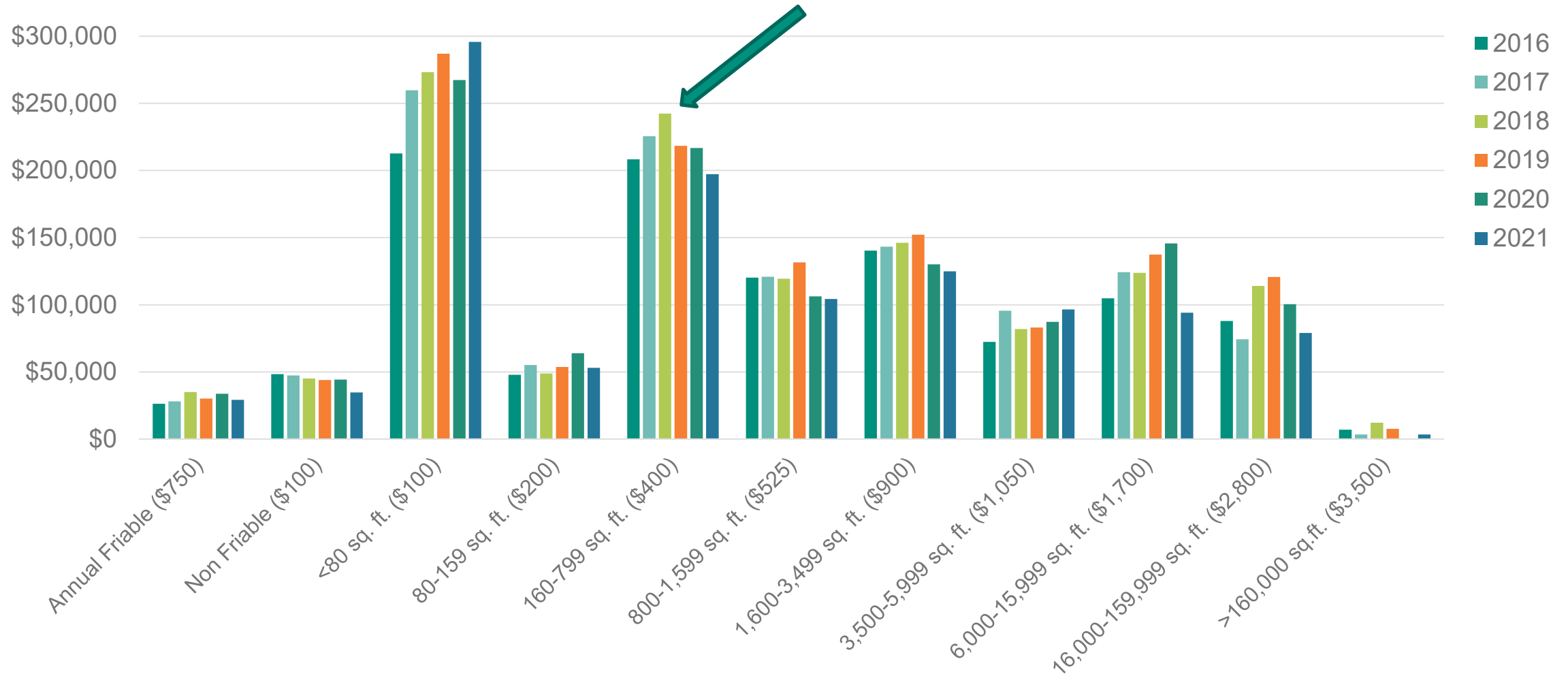
Asbestos Notification Fees 2016-2021



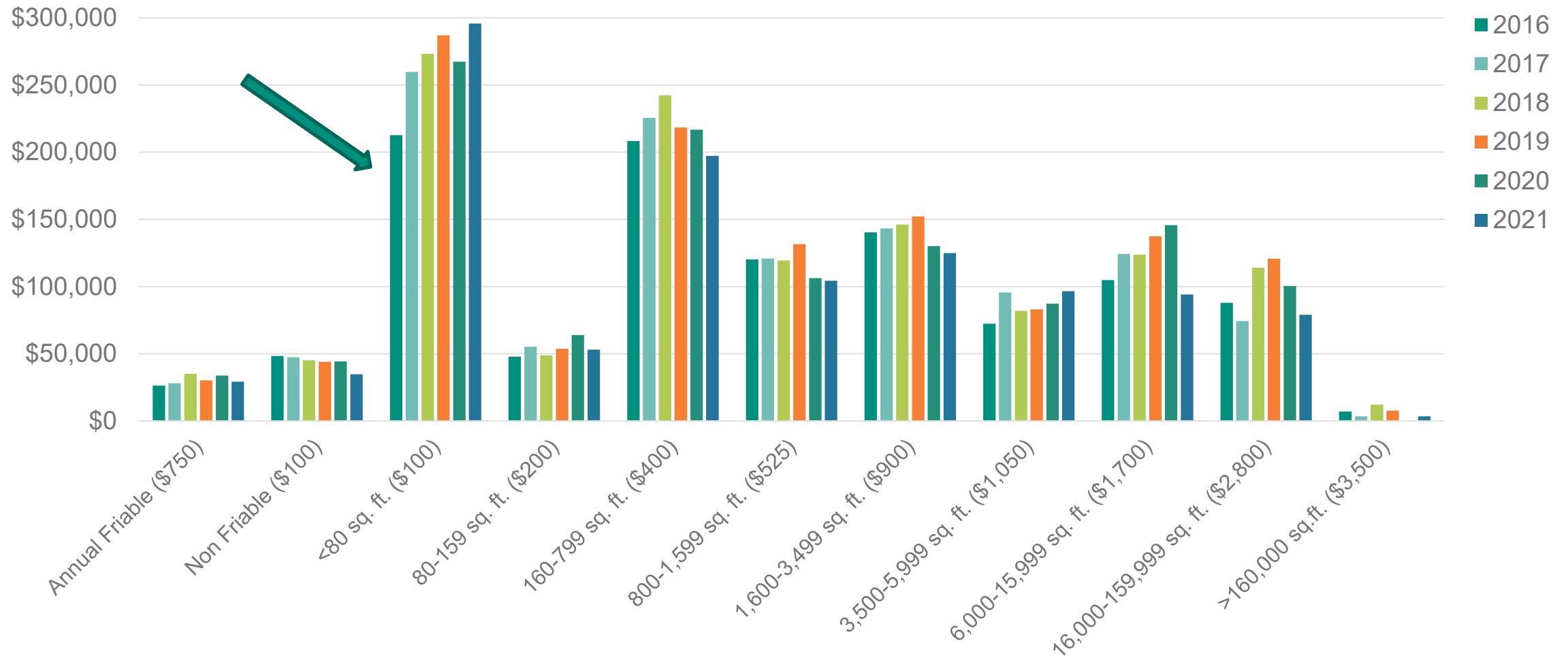
Asbestos Notification Fees 2016-2021



Asbestos Notification Fees 2016-2021



Asbestos Notification Fees 2016-2021



Questions to keep in mind



- Will the proposed rules have a fiscal impact?
- What is the extent of the impact?
- Will the proposed rules have a significant adverse impact on small businesses?
 - If so, how can DEQ reduce the impact?
- Will there be an effect to racial equity in the state due to the adoption of this fee increase?

Options

- Option #1: Across-the-Board Fee Increase
- Option #2: Selective Fee Increase

Asbestos Project Notification Fees			
Notification Fee	Current Fee	Increased Fee Option 1 ~26%	Increased Fee Option 2 ~20%
Friable (Annual)	\$750	\$945	\$900
Non-Friable (Annual)	\$500	\$630	\$600
Non-Friable	\$100	\$126	\$120
<80 sq. ft.	\$100	\$126	\$120
80-160 sq. ft.	\$200	\$252	\$240
160-800 sq. ft.	\$400	\$504	\$480
800-1,600 sq. ft.	\$525	\$662	\$630
1,600-3,500 sq. ft.	\$900	\$1,134	\$1,080
3,500-6,000 sq. ft.	\$1,050	\$1,323	\$1,260
6,000-16,000 sq. ft.	\$1,700	\$2,142	\$2,040
16,000-160,000 sq. ft.	\$2,800	\$3,528	\$3,360
>160,000 sq. ft.	\$3,500	\$4,410	\$4,200

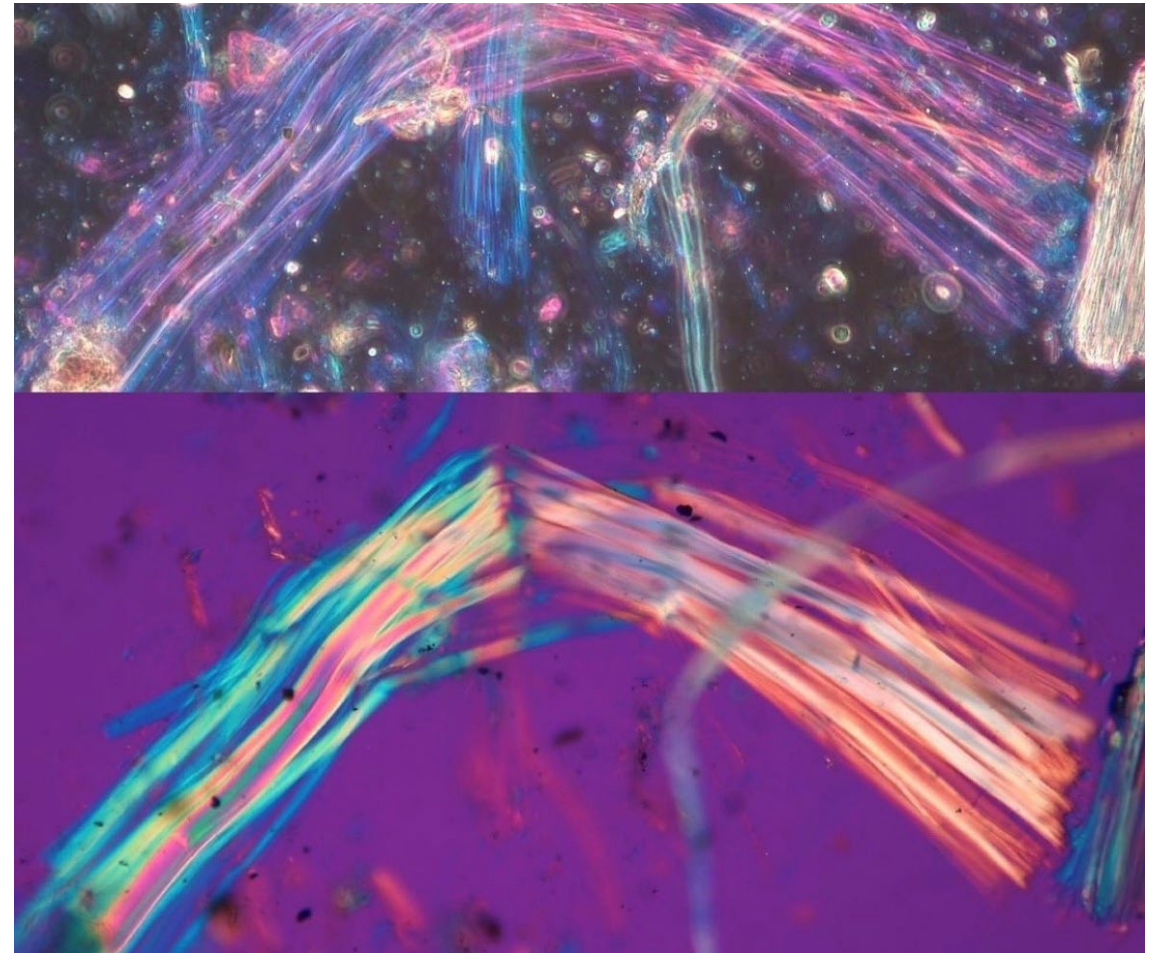
Options

- Option #1: Across-the-Board Fee Increase
- Option #2: Selective Fee Increase

Annual Asbestos Fees			
Worker and Supervisor Certification	Current Fee	Increased Fee Option 1 ~26%	Increased Fee Option 2 ~70%
Initial Worker Card	\$45	\$57	\$77
Refresher Worker Card	\$45	\$57	\$77
Initial Supervisor Card	\$65	\$82	\$111
Refresher Supervisor Card	\$65	\$82	\$111
Abatement Contractor License	Current Fee	Increased Fee Option 1 ~27%	Increased Fee Option 2 ~70%
New Contractor License	\$1,000	\$1,270	\$1,700
Contractor License Renewal	\$1,000	\$1,270	\$1,700
Contractor License Modification	\$1,000	\$1,270	\$1,700
Training Provider Accreditation	Current Fee	Increased Fee Option 1 ~23%	Increased Fee Option 2 ~70%
Initial Worker Class	\$320	\$394	\$544
Refresher Worker Class	\$320	\$394	\$544
Initial Supervisor Class	\$320	\$394	\$544
Refresher Supervisor Class	\$320	\$394	\$544

Break

Please return in 15 minutes



Advisory Committee input on rules



Advisory Committee input on OAR 340-248-0180 and -0260.

- Will the proposed rules have a fiscal impact?
- What is the extent of the impact?
- Will the proposed rules have a significant adverse impact on small businesses?
 - If so, how can DEQ reduce the impact?
- Will there be an effect to racial equity in the state due to the adoption of this fee increase?

Public Feedback Opportunity



Wrap-up discussion and roundtable remarks



Next steps

1. Review input from this meeting for potential changes and post meeting notes
2. Committee members can provide written comments to DEQ by **Feb. 1, 2022.**
3. Provide **draft rules** and **fiscal impact statement** to be posted online. (Link below)
4. Public comment period will begin in Feb. 2022.

-

Meeting documents are posted online:

- <https://www.oregon.gov/deq/rulemaking/Pages/asbestosfees2022.aspx>

Thank You!

