

LIBRARY
OREGON DEPARTMENT OF GEOLOGY
AND MINERAL INDUSTRIES
SUITE 905
800 NE OREGON STREET # 28
PORTLAND, OREGON 97232

P-3

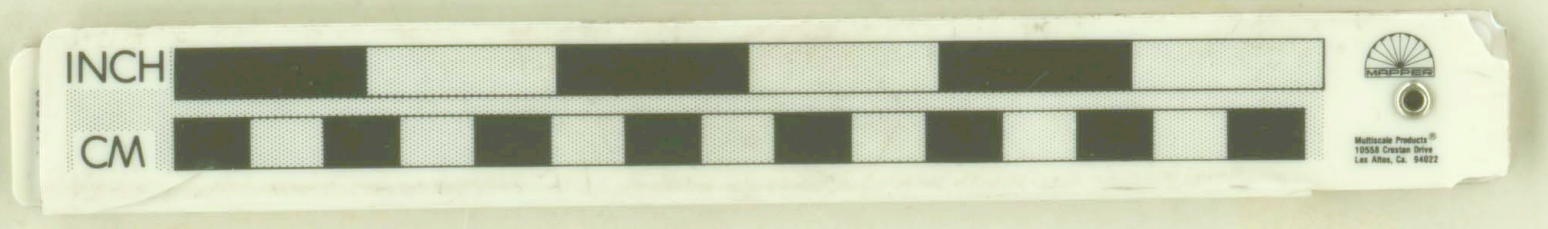
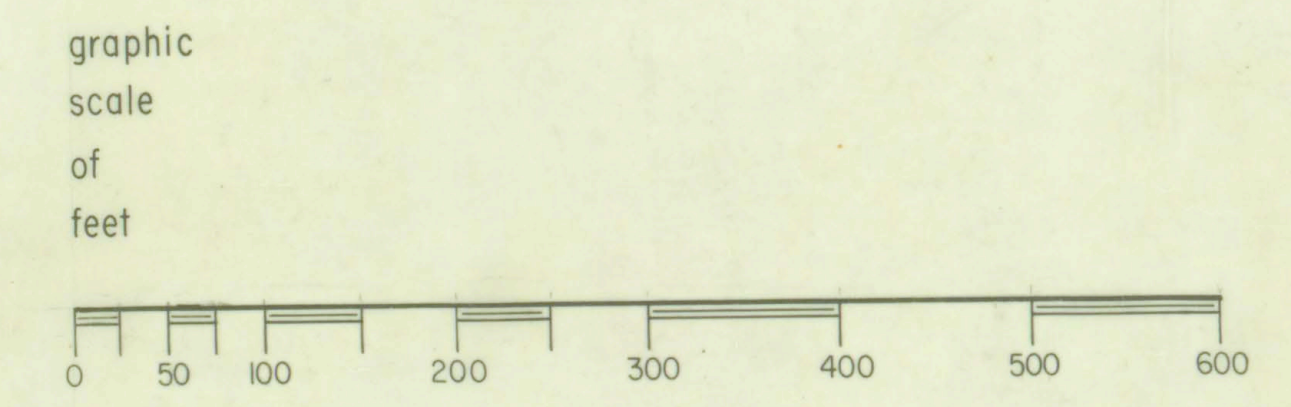
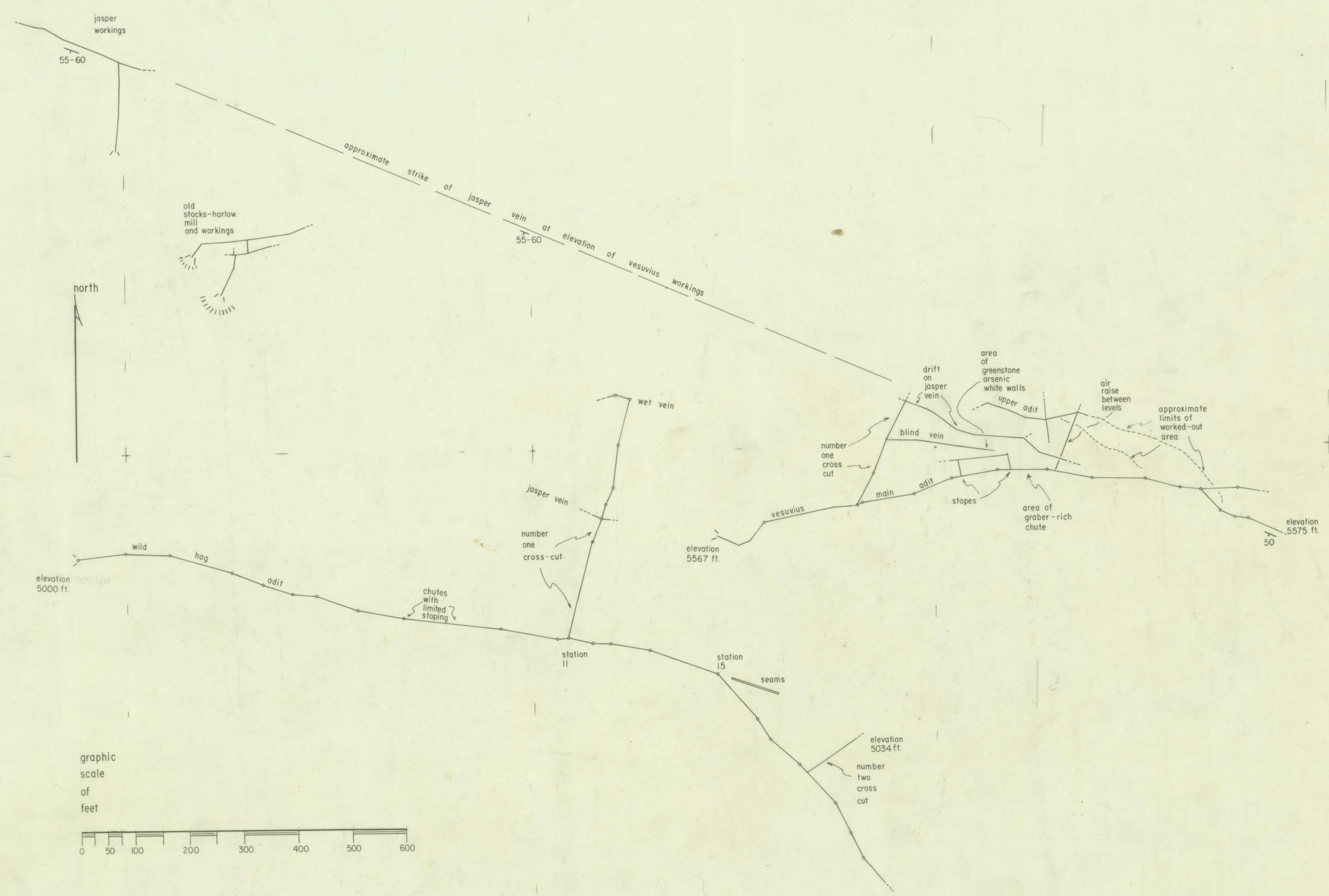
copy
of
working map,
including revisions,
of
VESUVIUS GROUP

mines
of
lane county, oregon

at
scale of
1 inch to 100 feet or
1:1200

dated
august 1927

by
william w. elmer



11-37-27

20110205

25

File 106

TRIM LINE

TRIM LINE