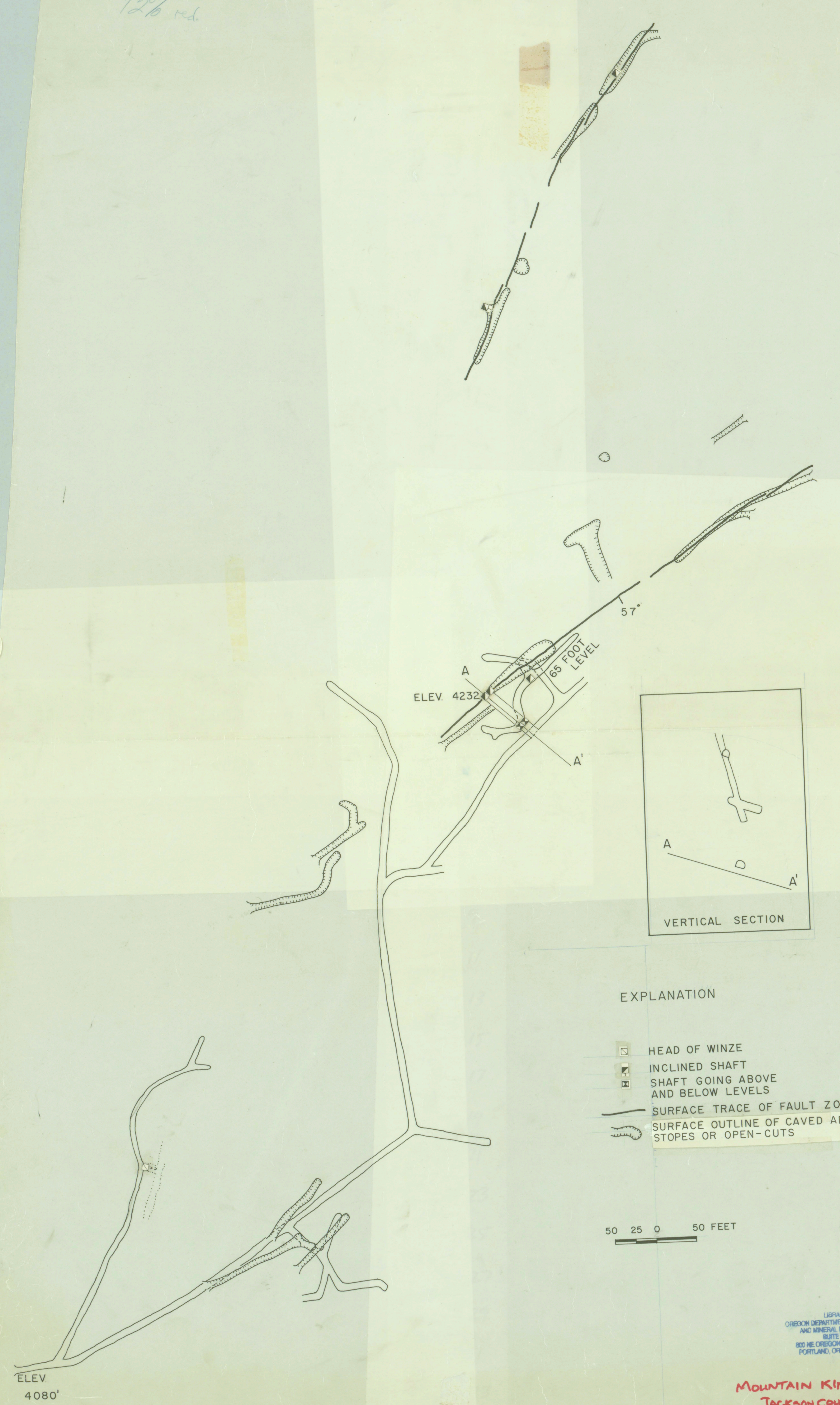
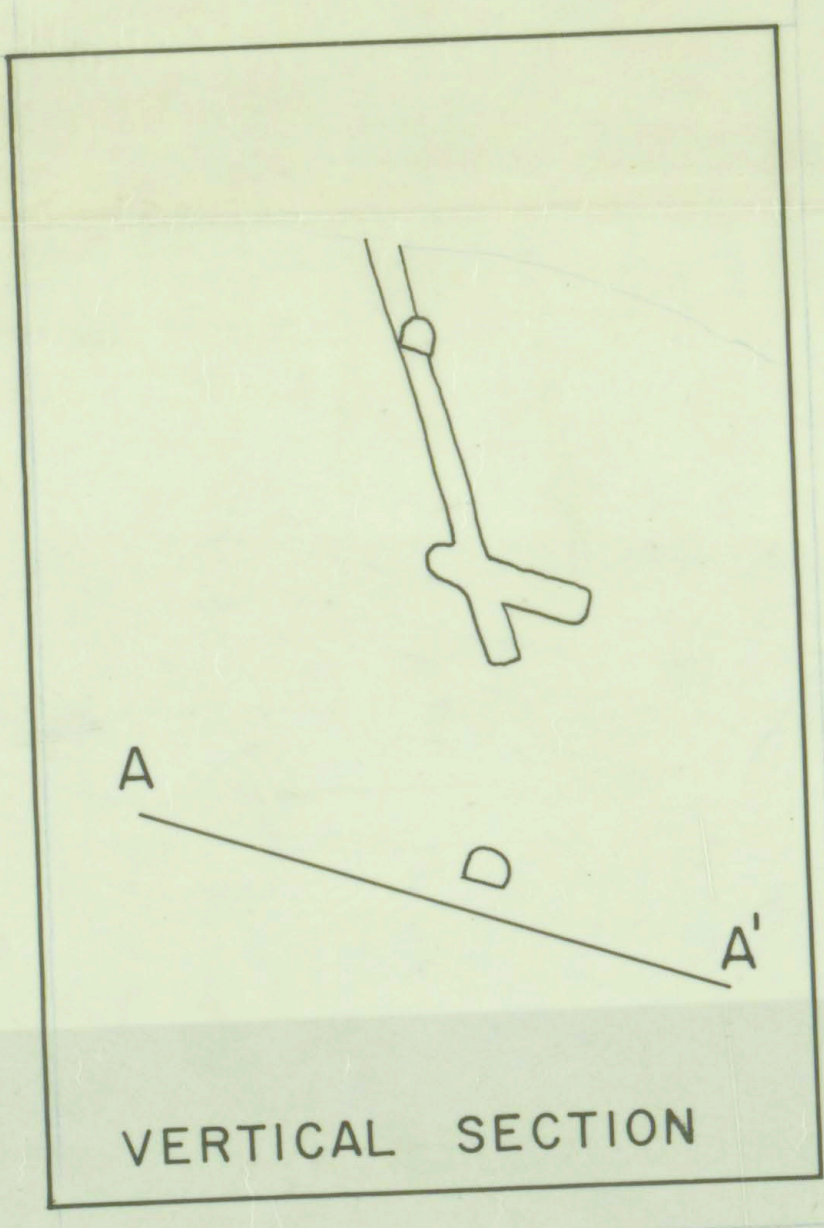


727 red.



ELEV. 4232
 A
 65 FOOT LEVEL
 A'

57°

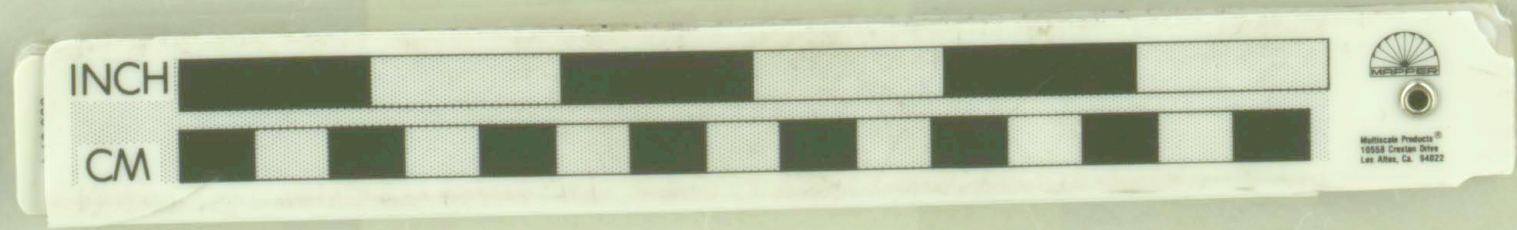


EXPLANATION

- HEAD OF WINZE
- ▣ INCLINED SHAFT
- ▤ SHAFT GOING ABOVE AND BELOW LEVELS
- SURFACE TRACE OF FAULT ZONES
- ~ SURFACE OUTLINE OF CAVED ADITS, STOPES OR OPEN-CUTS

50 25 0 50 FEET

ELEV. 4080'



LIBRARY
 OREGON DEPARTMENT OF GEOLOGY
 AND MINERAL INDUSTRIES
 SUITE 605
 800 NE OREGON STREET # 20
 PORTLAND, OREGON 97232 P-105

MOUNTAIN KING MINE
 JACKSON COUNTY, OR

Fig 5W?

WJM RWE