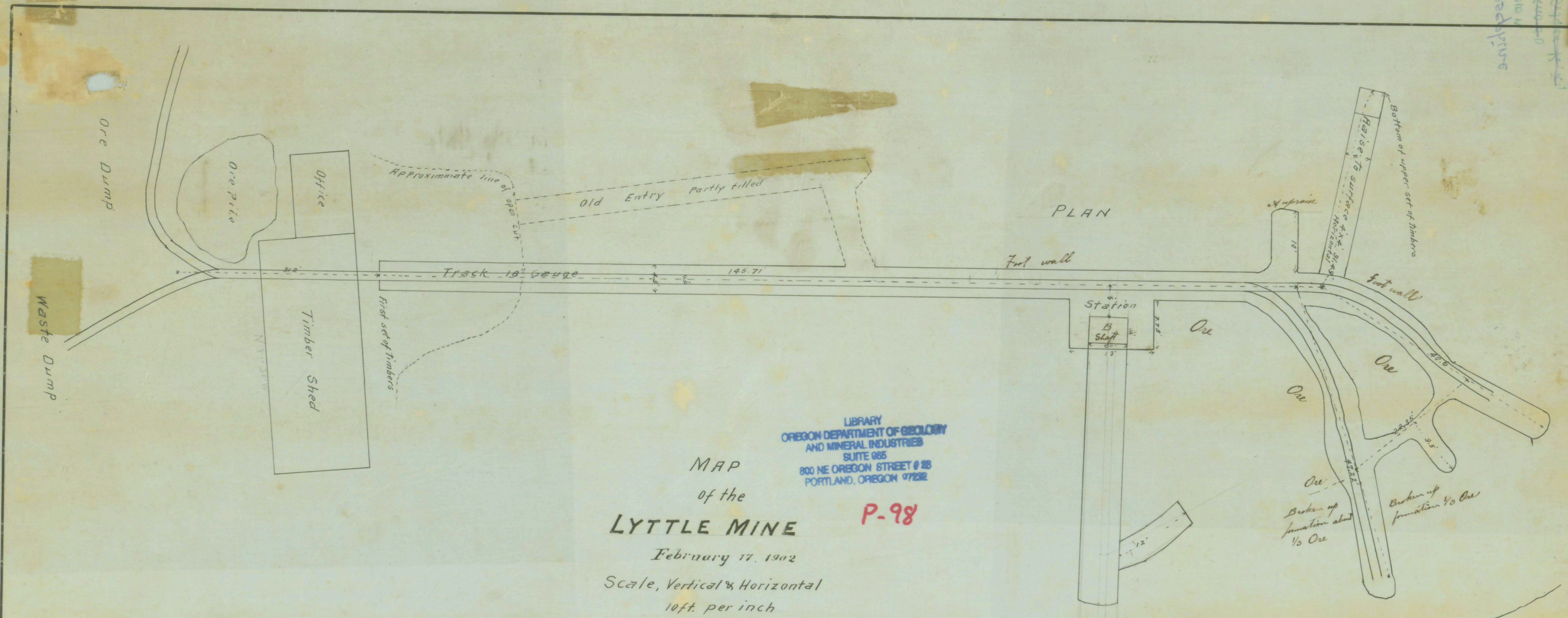
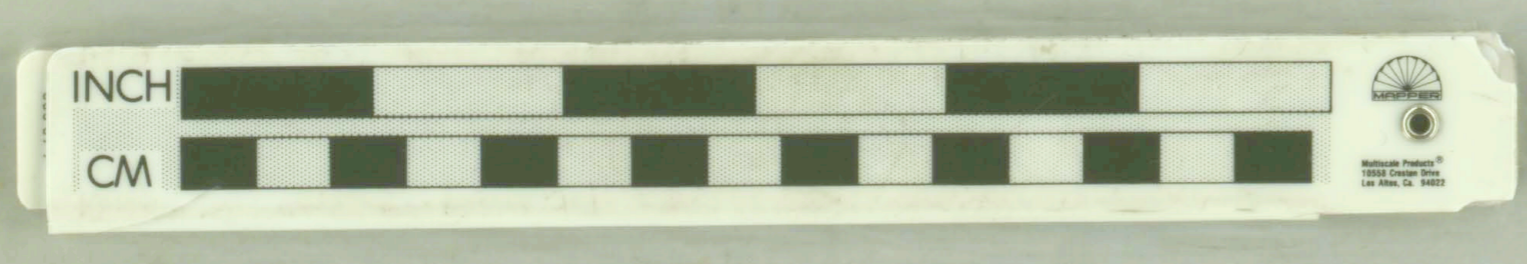
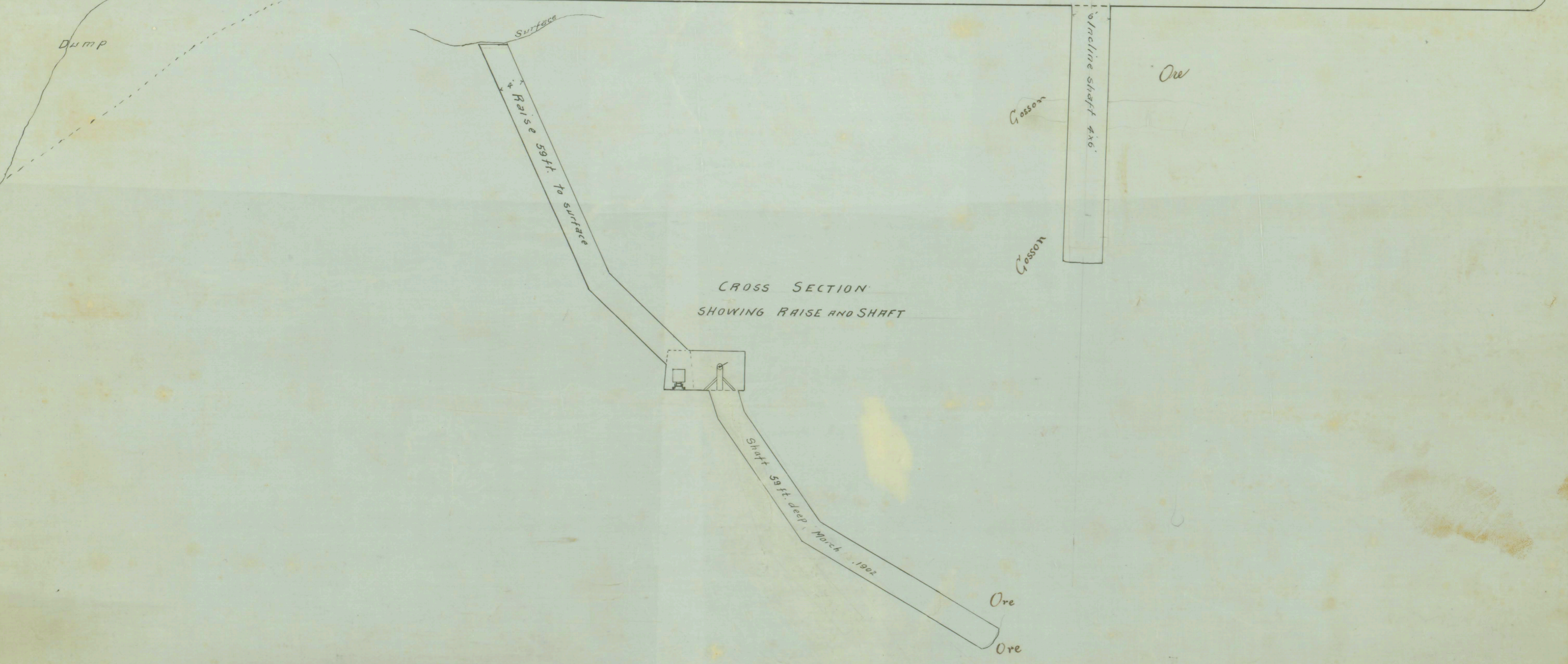
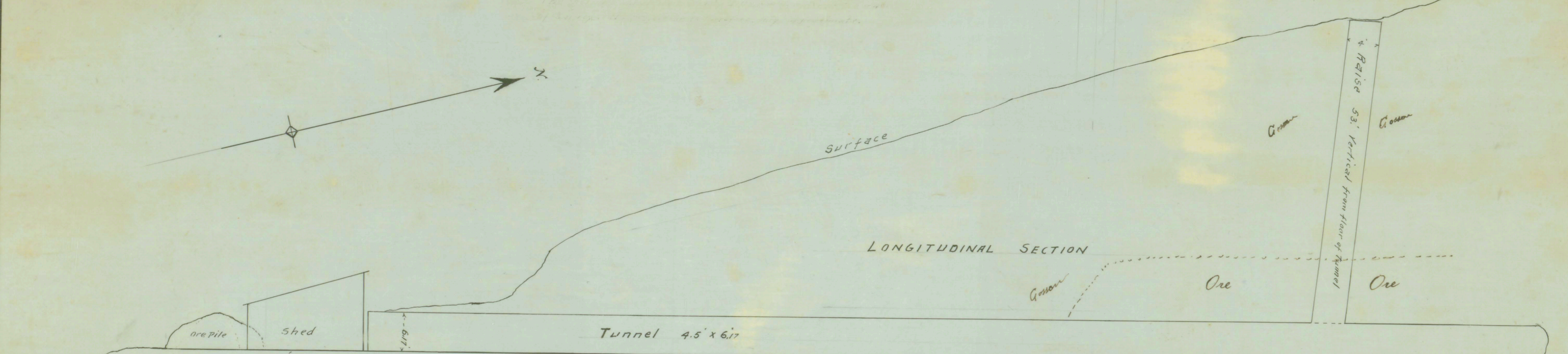


Handwritten notes in the top right corner, including "P-98" and other illegible scribbles.



MAP  
of the  
**LYTTLE MINE**  
February 17, 1902  
Scale, Vertical & Horizontal  
1/4" = 1' per inch

LIBRARY  
OREGON DEPARTMENT OF GEOLOGY  
AND MINERAL INDUSTRIES  
SUITE 905  
800 NE OREGON STREET # 28  
PORTLAND, OREGON 97232  
**P-98**



41-33-401

#23

30-  
-31  
32-  
-33