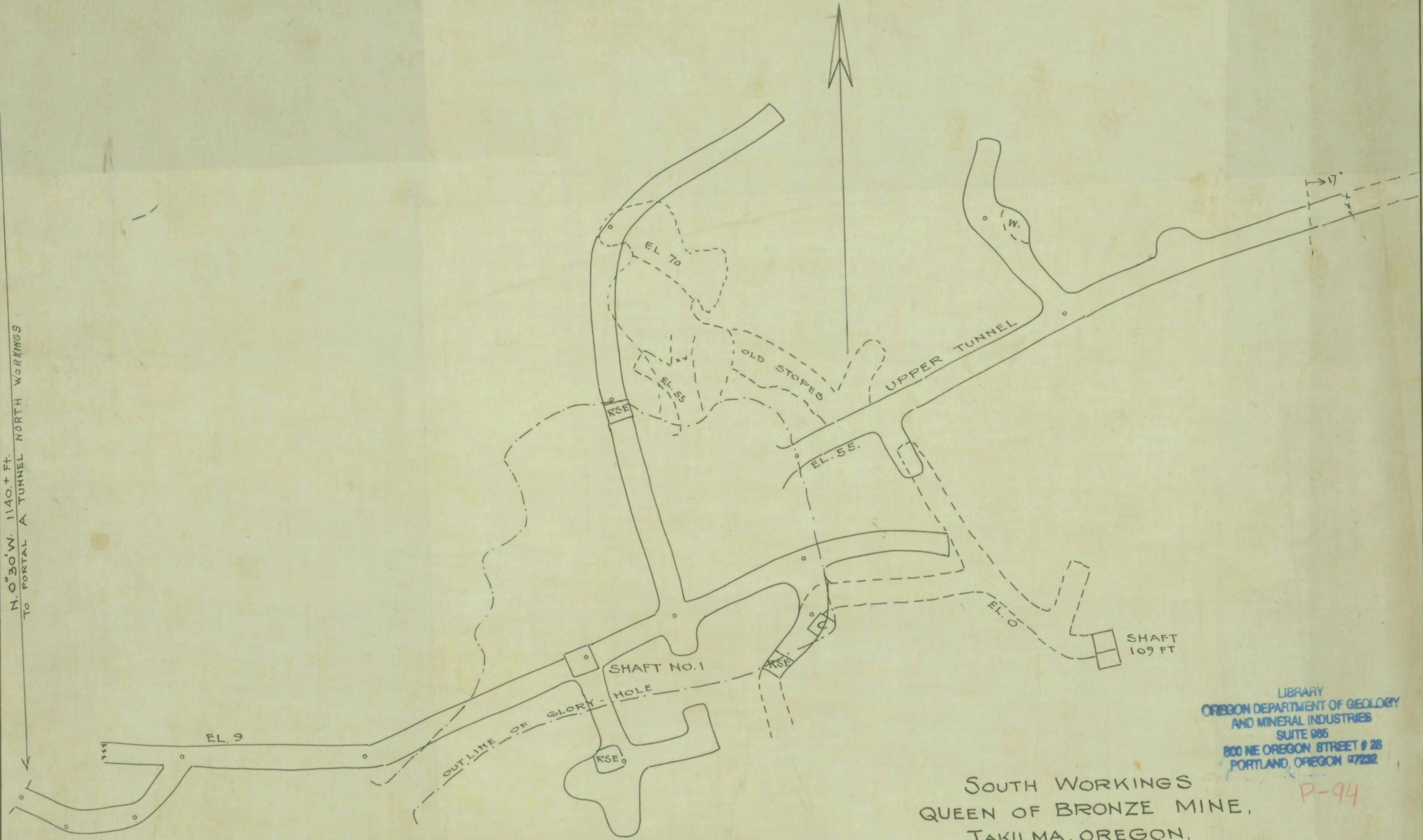


N. 0° 30' W. 1140. + Ft.
TO PORTAL A TUNNEL NORTH WORKINGS

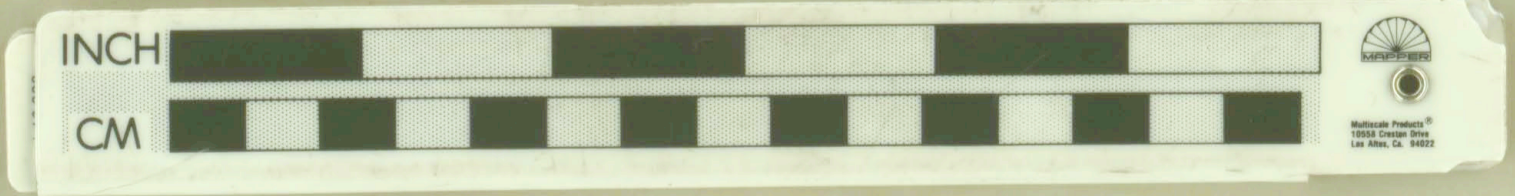


LIBRARY
 OREGON DEPARTMENT OF GEOLOGY
 AND MINERAL INDUSTRIES
 SUITE 005
 800 NE OREGON STREET # 28
 PORTLAND, OREGON 97232

SOUTH WORKINGS
 QUEEN OF BRONZE MINE,
 TAKILMA, OREGON.

SCALE ; 20 FEET = 1 INCH.

#55



41-33-109