

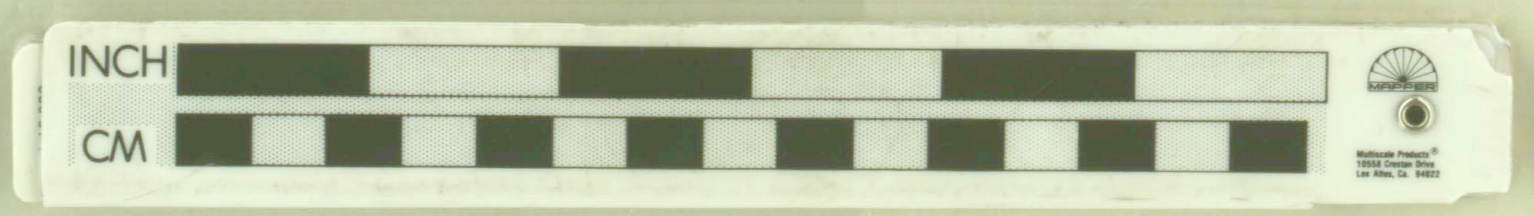
R.S.-12
Section S78°W
Looking N13°W

R.S.-11
J.F.-1
Section S78°W
Looking N12°W

CLR-7 - 90°
Hybrid from Christian (Spring-Sun)
Survey notes - 7-25-72 Trend is N50°W
CLR-2 - 90°
CLR-3 S83°W - 75°
Section S83°W
Looking N7°W
1"=40' 10-10-72

LIBRARY
OREGON DEPARTMENT OF GEOLOGY
AND MINERAL INDUSTRIES
SUITE 905
800 NE OREGON STREET # 28
PORTLAND, OREGON 97232

CNE Sheet



34 36 38 40
35 37 39 41