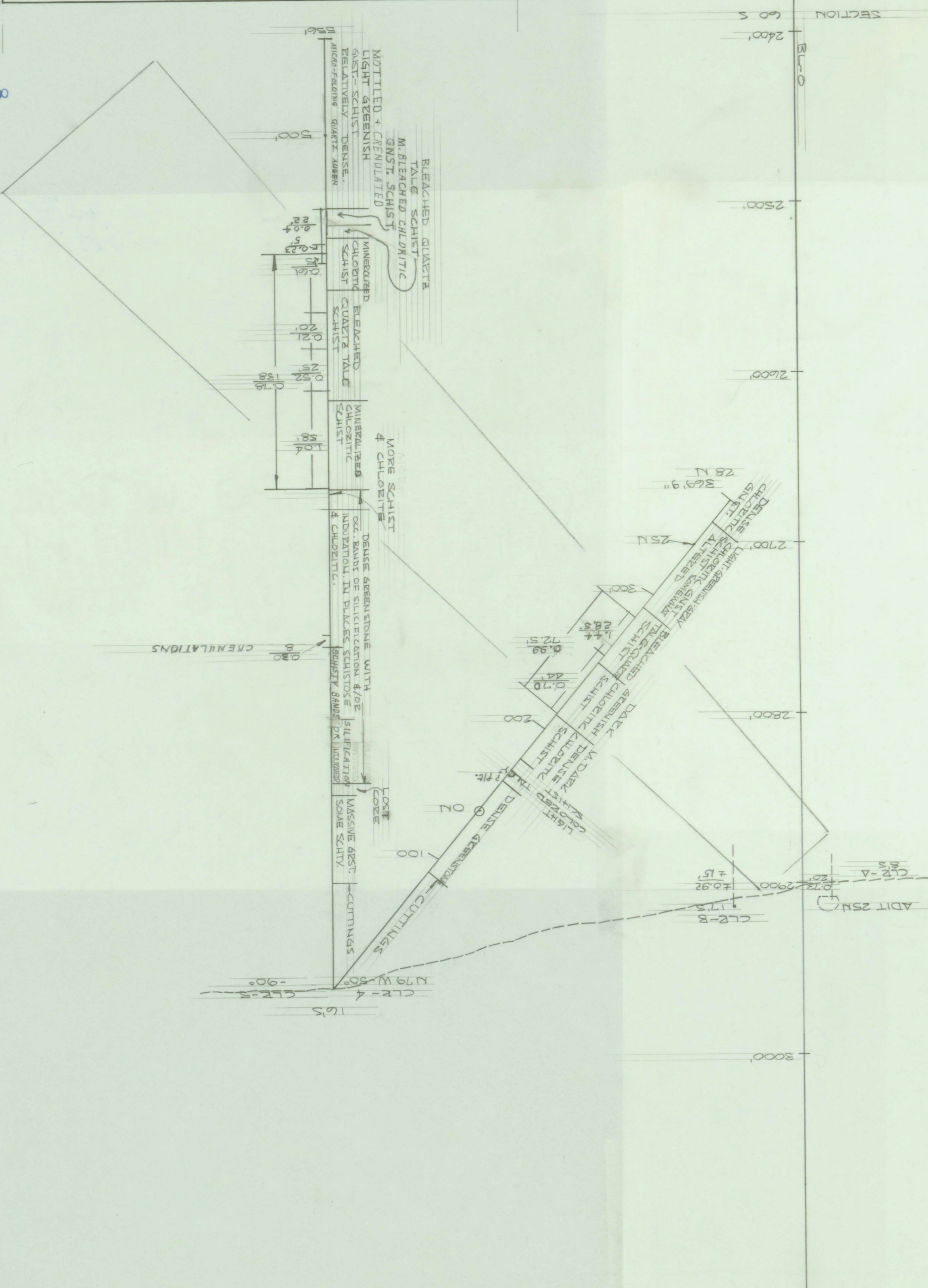
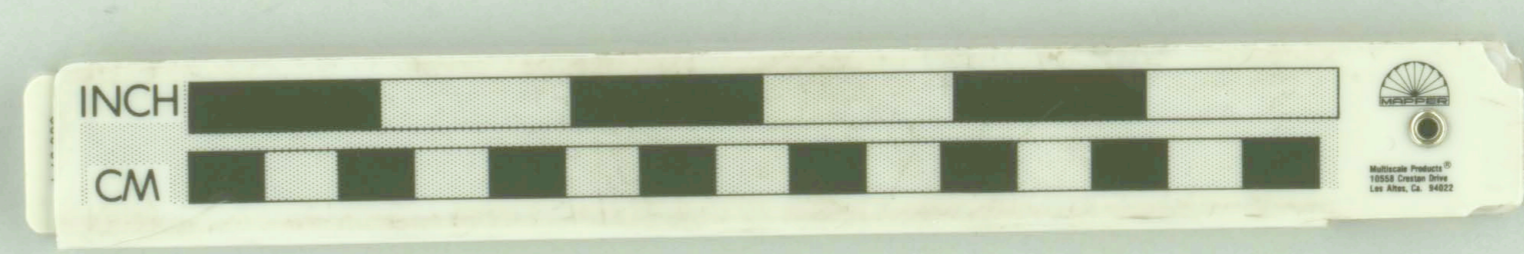


CONSTOCK LOPE SILVER COPPER MINES, INC.
 ROWLEY MINE SECTION
 LOOKING NORTH
 SECTION 60 S
 SCALE: 1" = 40'
 DATE: 10-19-72

LIBRARY
 OREGON DEPARTMENT OF GEOLOGY
 AND MINERAL INDUSTRIES
 SUITE 866
 800 NE OREGON STREET # 28
 PORTLAND, OREGON 97232
 P-68



- LEGEND
- CL- Drill Holes by Constock Lode Silver Copper Mines, Inc.
 - J-F - Drill Holes by J.M. Jackson Mining Co. Ltd.
 - E-S - Drill Holes by Wisconsin Mining Co. Ltd.
 - Gneissstone (Gneiss)
 - Quartzite Schist
 - Quartzite Talus Schist
 - Altered Schist, may be bleached or gray & reddish
 - Schistosity
 - Mineralization
 - Fault
 - Proposed Holes



Section 60 S, Rowley Mine, Constock Lode Silver Copper Mines, Inc.