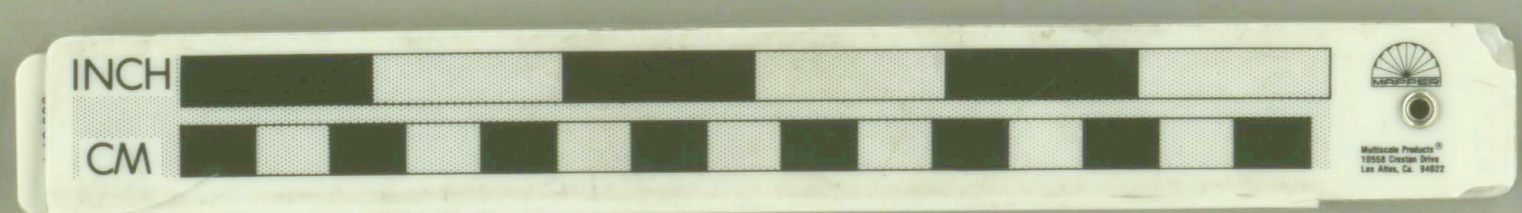


HOLE RS3

FROM	TO	%CU
114	119	NIL
119	124	0.20
124	134	0.80
134	144	0.10
144	154	TR
154	164	TR
164	174	TR
174	184	NIL
184	204	0.10
204	211	NIL

HOLE RS4

FROM	TO	%CU
87.5	89.5	0.70
204	211	NIL
211	224.5	0.15
224.5	234.4	NIL
234.4	244.4	TR



HOLE RS1

FROM	TO	%CU
21.1	35	51
35	40	51
40	45	1.08
45	50	46
50	55	123
55	60	82
60	65	36
65	70	17
70	75	34
75	83.5	0.5
83.5	88.5	9.8
88.5	95	0.8
95	100	1.0
100	105	0.9
105	110	1.2
110	140	1.0
140	204.5	0.5

HOLE RS2

FROM	TO	%CU
75	80	NIL
80	85	0.30
85	90	0.50
90	95	0.30
95	100	0.70
100	105	0.60
105	110	TR
110	115	0.40
115	125	0.40
125	130	0.10
130	135	0.40
135	140	0.20
140	145	0.10
145	150	0.10
150	165	0.10
165	170	0.10
170	201	0.25

NOTE: Data on this section compiled from sections drawn by others. Not verified by me at this time. 5/2/72

LEGENT
OREGON DEPARTMENT OF GEOLOGY
AND MINERAL INDUSTRIES
SUITE 900
600 NE OREGON STREET #200
PORTLAND, OREGON 97202

P-76

ROWLEY MINE
CROSS SECTION
1" = 40' WJB