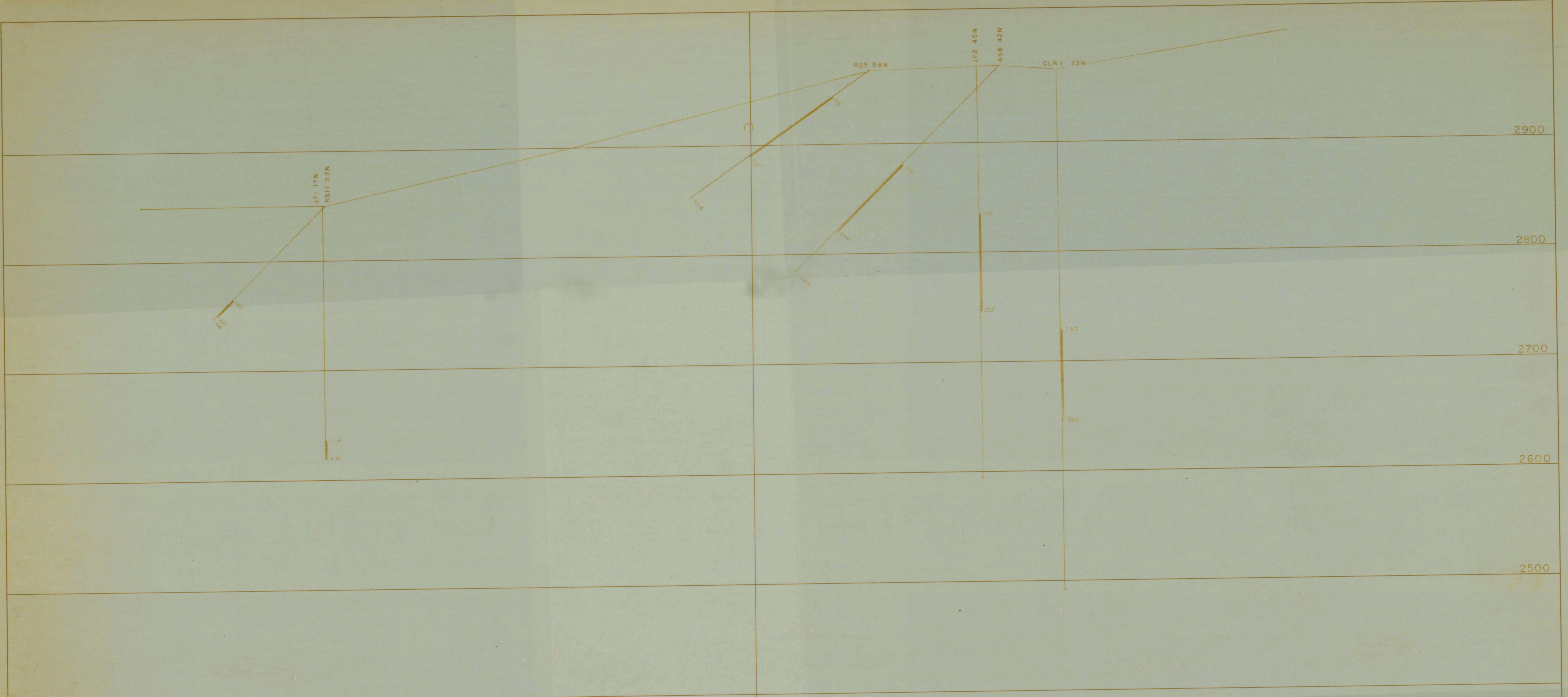


32  
30  
28  
26



HOLE RS II

FROM	TO	%CU	%ZN
120	122	0.2	0.2
122	127	0.3	0.2
127	132	0.4	0.2
132	138	0.4	0.2
138	140	0.2	0.4

HOLE JF I

FROM	TO	%CU	%ZN
214	217	0.44	0.17
217	222	0.31	0.35
222	225	0.88	0

HOLE RS 5

FROM	TO	%CU
40	45	1.50
45	50	0.50
50	55	0.28
55	60	0
60	65	0.80
65	70	0.60
70	74	1.60
74	80	1.00
80	85	0.70
85	90	1.10
90	95	2.40
95	100	1.50
100	105	0
105	115.4	1.35
115.4	120.9	0.80
120.9	124.9	0.70
124.9	127	1.50
127	135.1	0.5

HOLE RS 6

FROM	TO	%CU
127	128.4	0.55
128.4	135	1.10
135	140.3	1.10
140.3	145.4	1.20
145.4	150.4	1.25
150.4	155.4	2.10
155.4	161.12	0.70
161.12	167.2	0.45
167.2	174	0.20
174	179	0
179	184	0
184	194	0
194	199	0
199	204	0
204	209	0.70
209	214	0

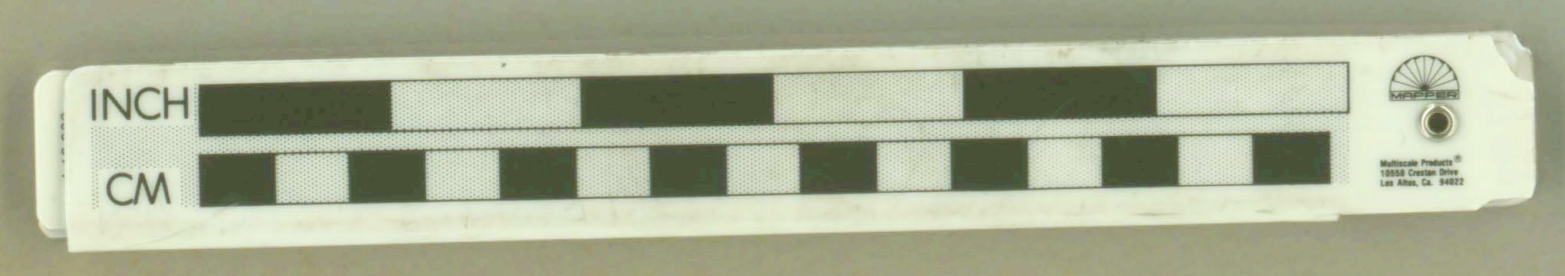
HOLE JF 2

FROM	TO	%CU
174	174	0.37
174	174	0.34
174	174	1.20
174	183	1.00
183	185.4	0.4
185.4	192	0.37
192	194	1.0
194	194.3	1.4
194.3	204.2	2.85
204.2	208	2.15
208	211.7	0.52
211.7	220.5	2.14
220.5	223.0	0.84
223.0	230.4	0.25

HOLE CLR I

FROM	TO	%CU
227	228	1.24
228	232	0.48
232	235	1.08
235	240	0.60

NOTE: Data on this section compiled from sections drawn by others. Not verified by me at this time. 5/2/72 WJB



LIBRARY  
OREGON DEPARTMENT OF GEOLOGY  
AND MINERAL INDUSTRIES  
SUITE 906  
810 NE OREGON STREET # 28  
7332

P-77

**ROWLEY MINE  
CROSS SECTION**  
1" = 40' WJB

25  
27  
29  
31