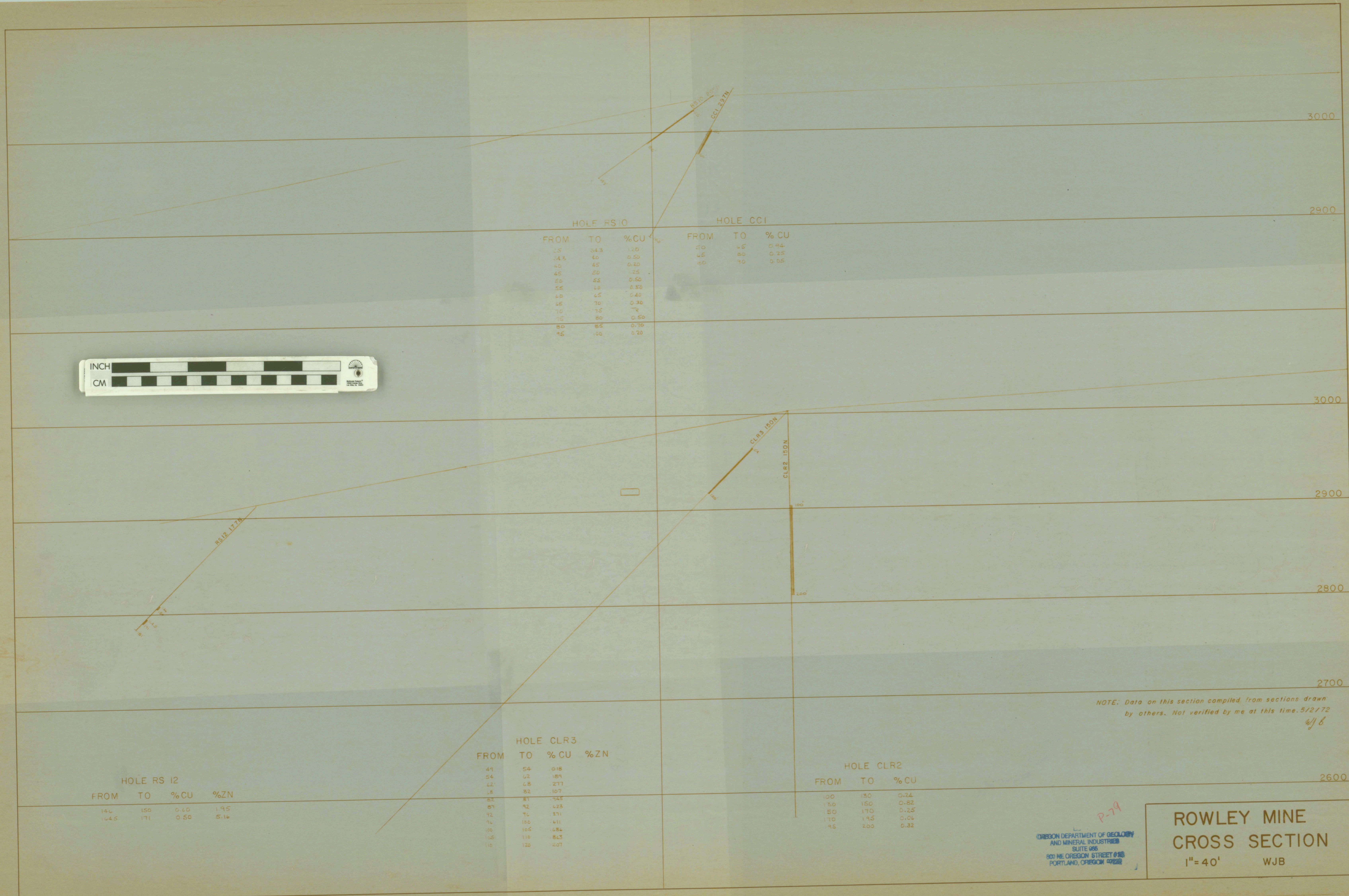


29
27
25

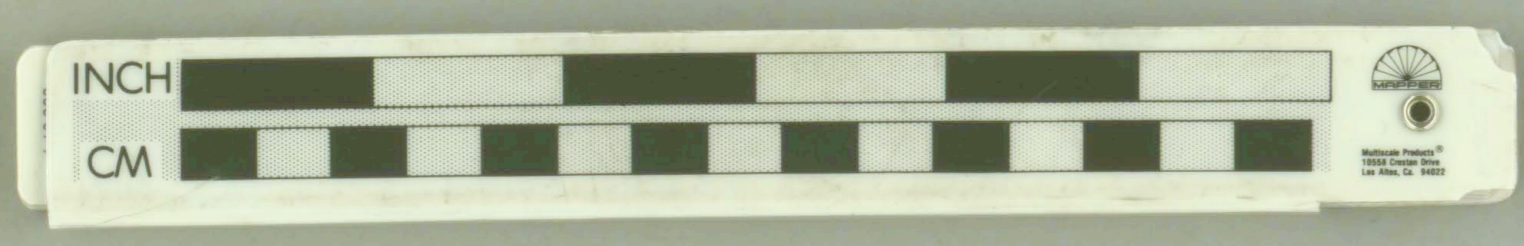


HOLE RS 0

FROM	TO	%CU
15	34.3	1.0
43	40	0.50
45	45	0.20
45	50	.25
55	55	0.50
55	10	0.30
45	45	0.40
45	70	0.30
70	75	.7
75	80	0.50
80	85	0.70
85	100	0.20

HOLE CCI

FROM	TO	%CU
30	45	0.44
45	80	0.25
80	90	0.05



HOLE RS 12

FROM	TO	%CU	%ZN
146	150	0.40	1.95
164.5	171	0.50	5.16

HOLE CLR3

FROM	TO	%CU	%ZN
47	54	0.18	
54	62	1.51	
62	68	2.77	
68	82	10.7	
82	87	14.5	
87	92	4.23	
92	96	3.71	
96	105	4.11	
105	105	1.84	
105	119	6.3	
110	120	10.7	

HOLE CLR2

FROM	TO	%CU
100	150	0.24
150	150	0.82
150	170	0.25
170	195	0.01
195	200	0.32

NOTE: Data on this section compiled from sections drawn by others. Not verified by me at this time. 5/2/72
WJB

P-79
OREGON DEPARTMENT OF GEOLOGY
AND MINERAL INDUSTRIES
SUITE 605
800 NE OREGON STREET @ 100
PORTLAND, OREGON 97232

**ROWLEY MINE
CROSS SECTION**
1" = 40'
WJB