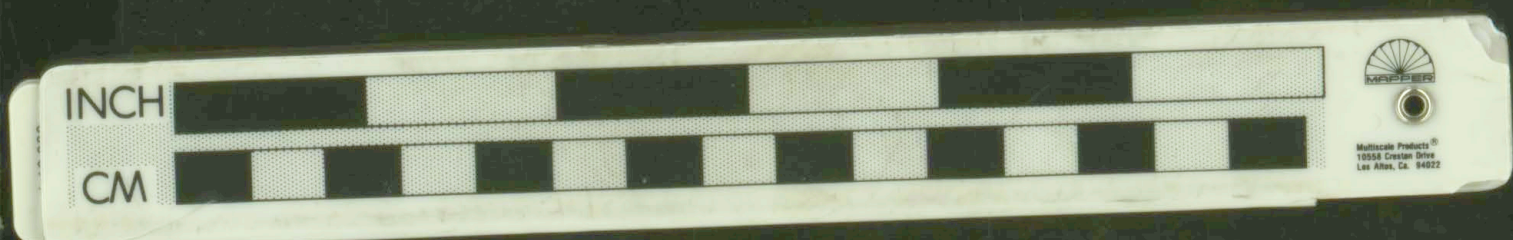


27
26
25



20
111
21 19

18 2
11
19



Topographic Map
MAURY MOUNTAIN MINE

Scale 1"=500'
 Contour Interval 10 ft.

Surveyed by:
 H. Harper, F. Young
 7/20/39

Station 210 tied
 to SE corner Sec. 10,
 T. 17 S., R. 19 E.

24
25
26
27