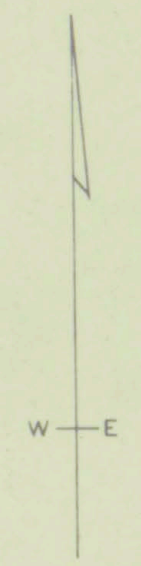
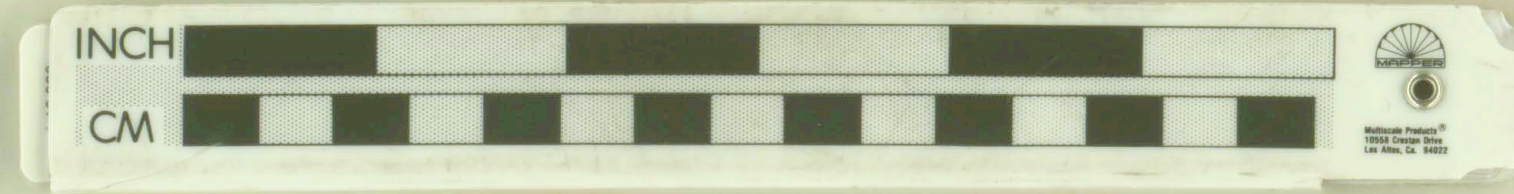
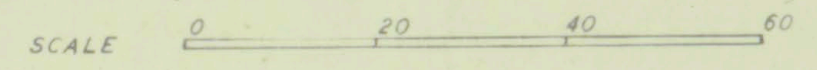


TUBE 17



DRAINAGE ADIT OF THE LOWER WORKINGS OF THE MAURY MOUNTAIN MINE, CROOK CO., OREGON

BRUNTON & TAPE SURVEY, NOV. 9, 1952, BY N. S. WAGNER & L. RAMP
STATE OF OREGON, DEPARTMENT OF GEOLOGY & MINERAL INDUSTRIES



LIBRARY
OREGON DEPARTMENT OF GEOLOGY
AND MINERAL INDUSTRIES
SUITE 985
800 NE OREGON STREET # 28
PORTLAND, OREGON 97232

P-51

41-13-14

41-013-0014

B-21

#17

20
1111
21 19

2
1
19

14
13

12
13
14