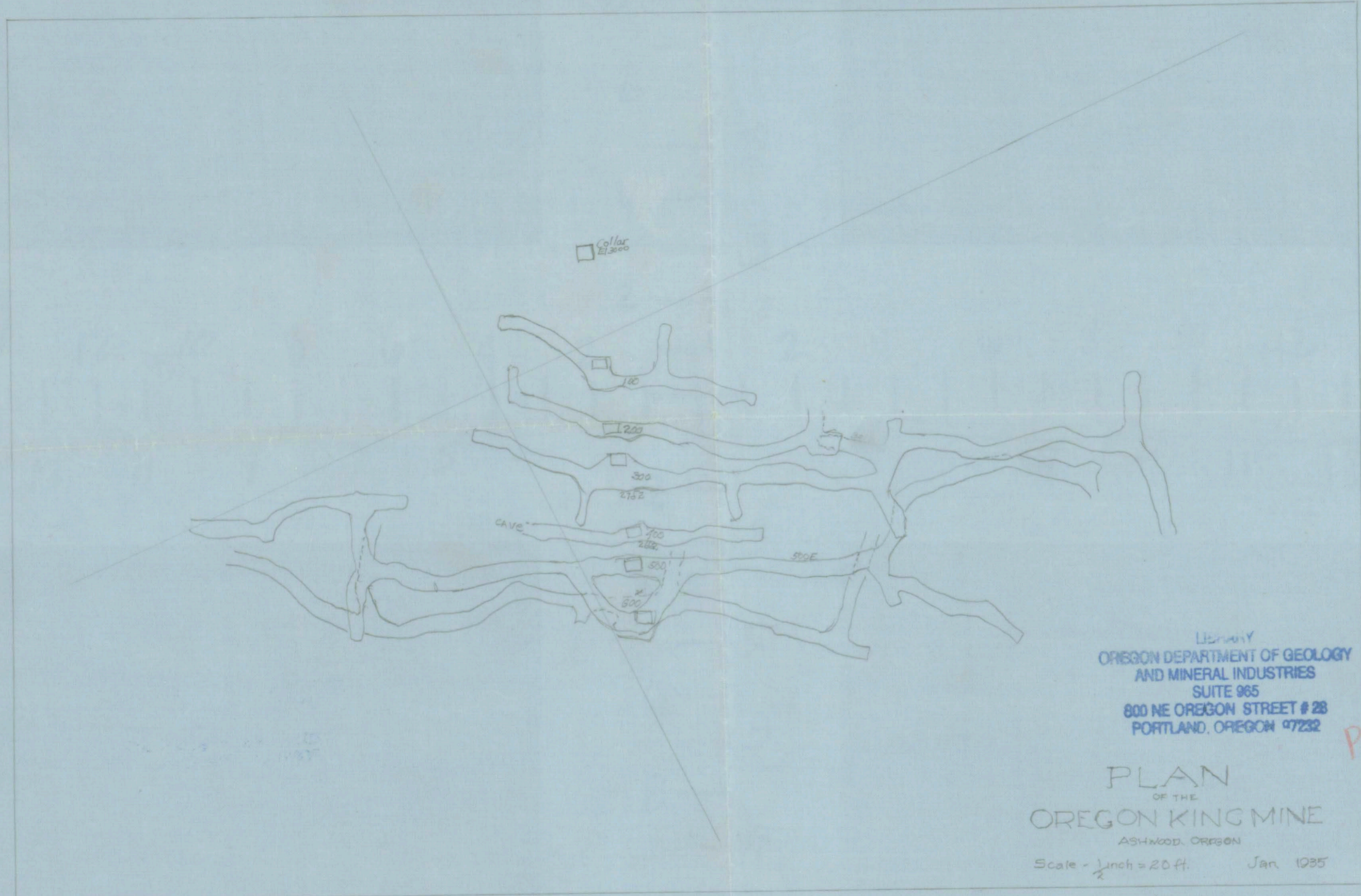
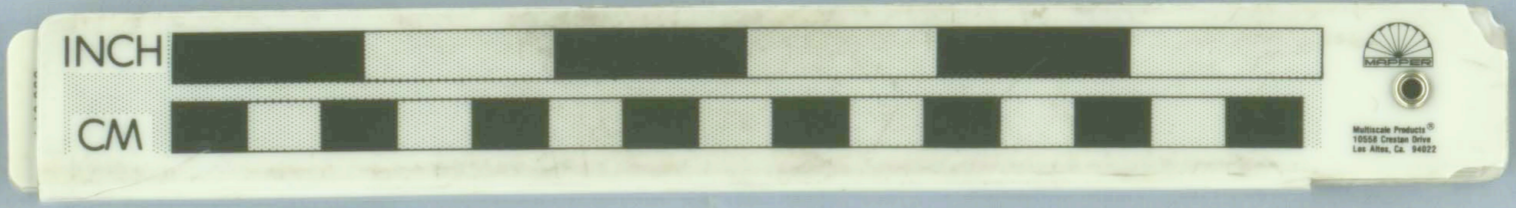


14-13



LIBRARY  
 OREGON DEPARTMENT OF GEOLOGY  
 AND MINERAL INDUSTRIES  
 SUITE 965  
 800 NE OREGON STREET # 28  
 PORTLAND, OREGON 97232

P21

PLAN  
 OF THE  
 OREGON KING MINE  
 ASHWOOD, OREGON

Scale - 1/2 inch = 20 ft. Jan. 1935

14-13