

LIBRARY
 OREGON DEPARTMENT OF GEOLOGY
 AND MINERAL INDUSTRIES
 SUITE 985
 800 NE OREGON STREET # 28
 PORTLAND, OREGON 97232

P-27

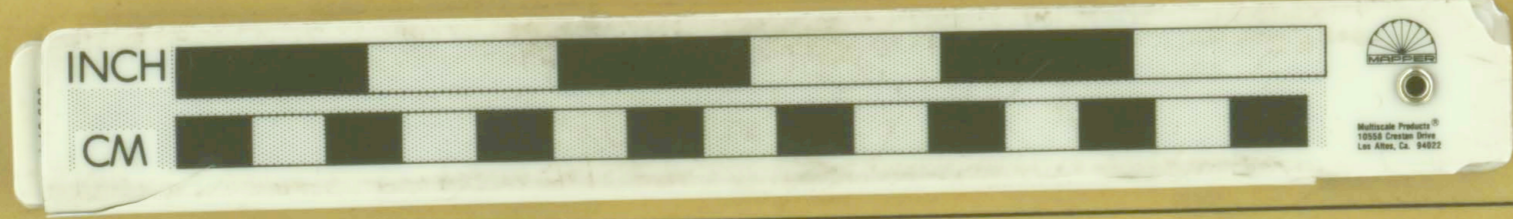
LINCOLN MINES CO.
 QUARTZVILLE DIST - LINN CO., ORE.

Sketch map of principal workings
 of Bonanza and Mountain Queen
 Claims.

by
 OREGON BUREAU OF MINES and GEOLOGY
 G. E. Stowell
 Field Engineer

Aug. 1921

Scale 1 in. = 100 ft.



Linn County
 Quartzville District
 Albany Group

Lincoln Mines Co. (Albany) All on Call. + Budd. Pl. 19. p. 105

41-43-9