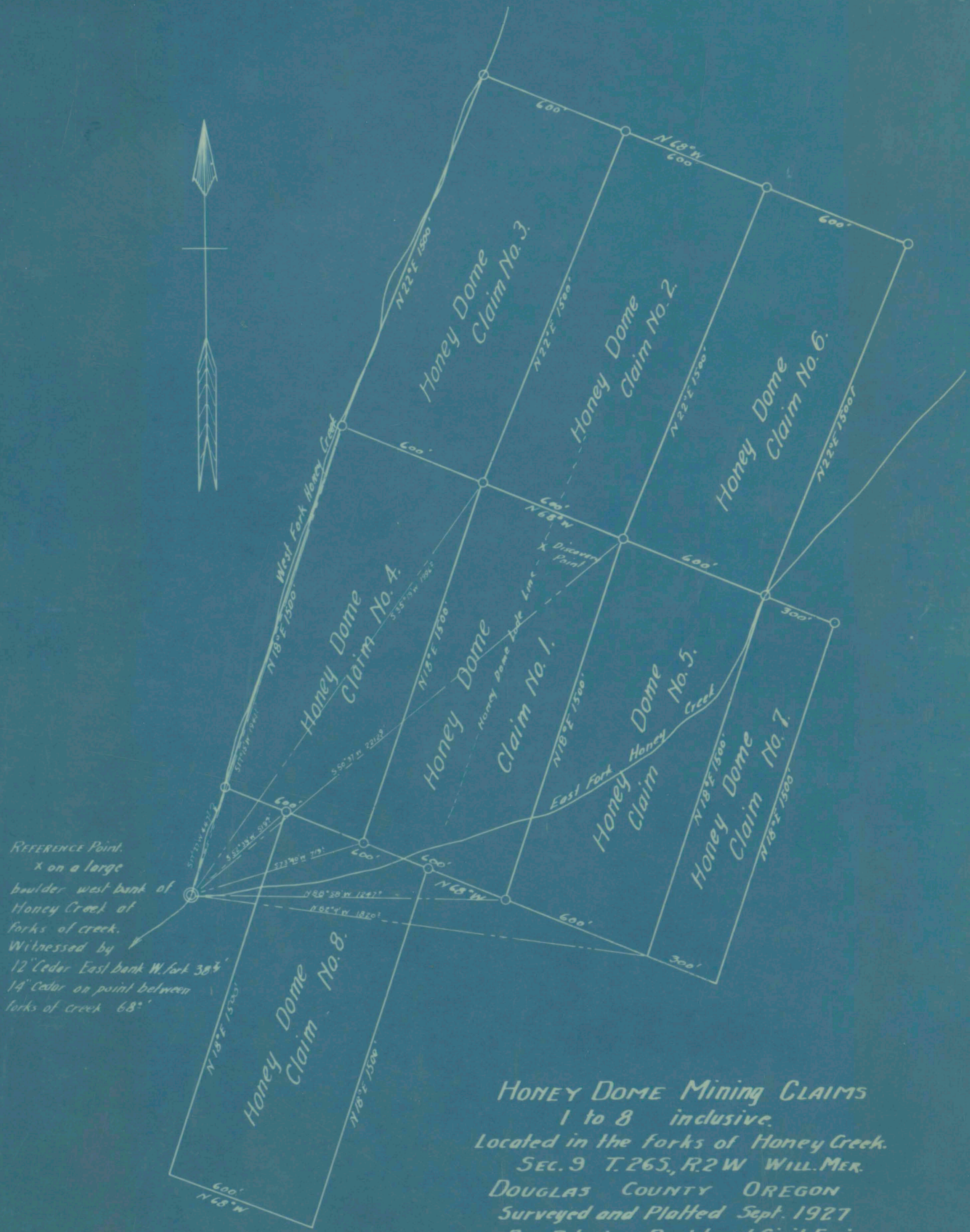
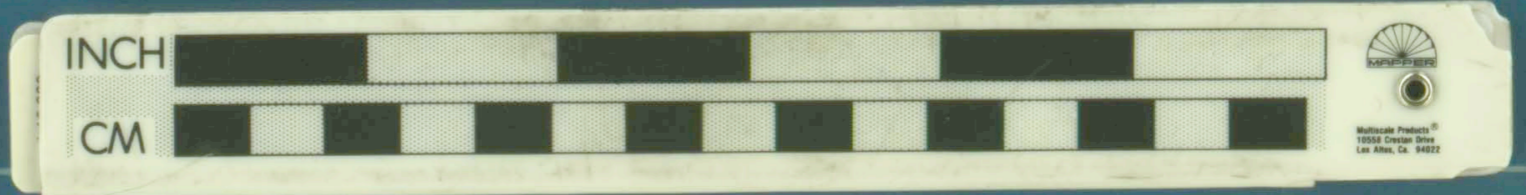


22 —  
— 21  
20 —



REFERENCE Point.  
 X on a large  
 boulder west bank of  
 Honey Creek at  
 forks of creek.  
 Witnessed by  
 12" Cedar East bank W. fork 38'  
 14" Cedar on point between  
 forks of creek 68'

**HONEY DOME Mining CLAIMS**  
 1 to 8 inclusive.  
 Located in the forks of Honey Creek.  
 SEC. 9 T. 265, R. 2 W WILL. MER.  
 DOUGLAS COUNTY OREGON  
 Surveyed and Platted Sept. 1927  
 Ben. B. Irving - Registered Civil Engineer.



P-194

3 16  
11 11  
17 15

16  
1

20 —  
— 21  
27 —