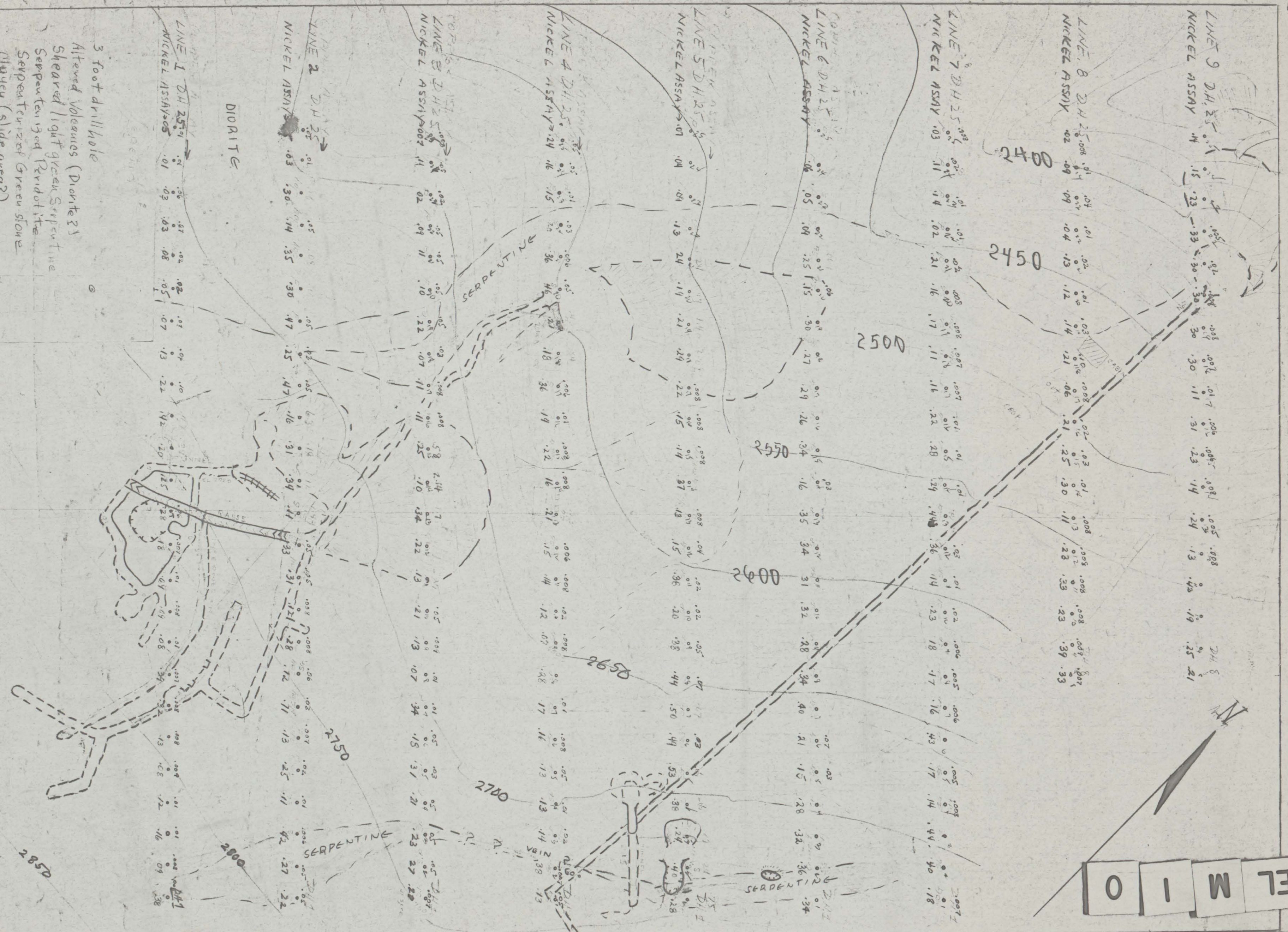


REEL M 1 0
FRAME 3 5 3

0 4 1 0 3 3 0 0 0 1 7

1 2 3 4 5



3 foot drill hole
Altered Volcanics (Diorite?)
Sheared light green Serpentine
Serpentinized Rhyolite
Serpentinized Green stone
(slaty (slate area?))
Manganese stained horizons
Outcrop interval = 10'

Scale: 1" = 46'
Date: Nov 1950
Based on Brunton-Tape Traverse

FIG 1 Surface Topography & Geology Map, Cowboy Mine, Truckee, Oregon
(To accompany Monthly Report for DECEMBER 1950)

P-207

