

251-9

**THE CONSOLIDATION  
OF THE  
PLACER MINES AND WATER RIGHTS  
OF THE  
Josephine Creek Watershed**

43 Square Miles

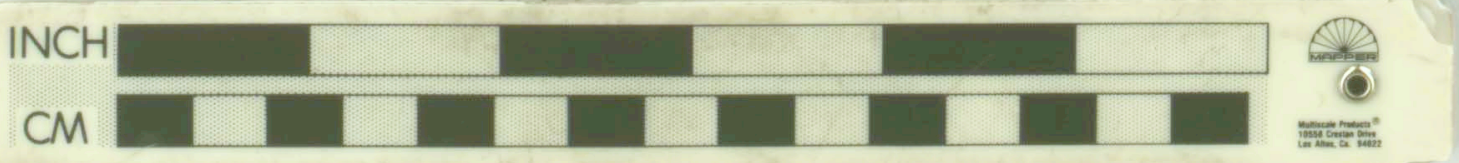
J.R. Harvey Grant's Pass Ore.

Scale 1/2" = 1 MILE



R. 9. W.

R. 8. W.



430170

P-175

AMERICAN MINING CO. PASADENA