

T. 34S. R. 8W.
T. 35S. R. 8W.

**NORTH END
OF THE
OLD CHANNEL MINE**

GALICE MINING DISTRICT - IN
JOSEPHINE COUNTY, OREGON.

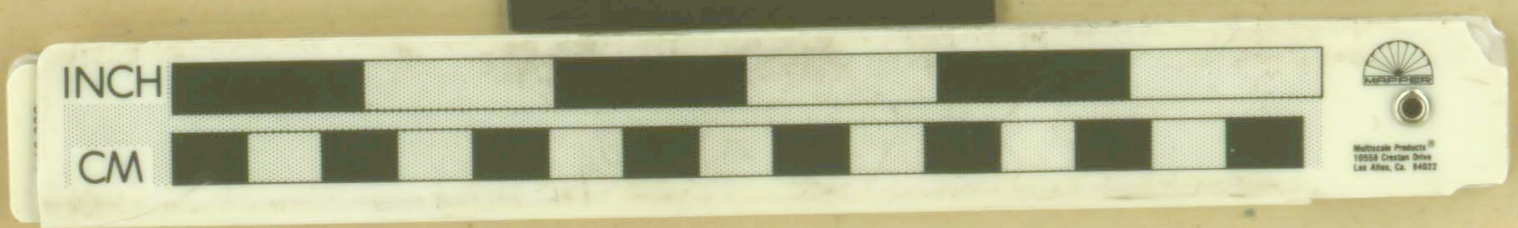
Survey Begun: April 15, 1935 Completed May 1935

Surveyed & Mapped by
Lorenze Jew & L.L. Winsor

Approved: *[Signature]*
A.R. McGuire, Justice

OLD CHANNEL - SOUTH END
BLUE GRAVEL DIGGINGS
See Map 2
248.62 Acres

430326



*Please do not cut
mine tracing
L. Winsor*

P-146