

T.23S. R.1E.

R.2E.

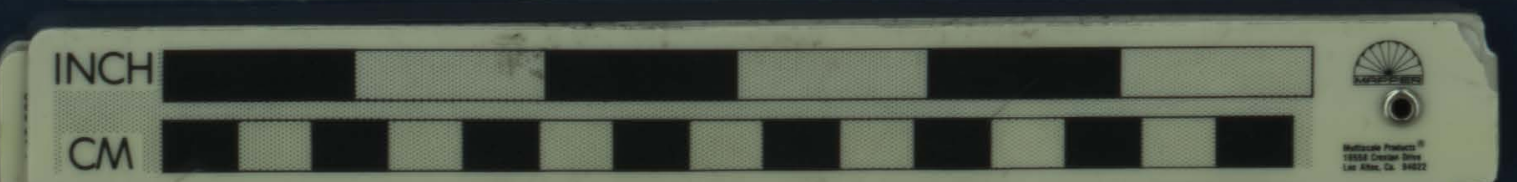
431639

MAP OF PART
OF THE
BOHEMIA MINING DISTRICT
LANE COUNTY OREGON

SHOWING LOCATIONS IN THE CENTRAL PART
Scale: 1" = 600' MARCH 16, 1929

MINES SERVICE Inc.
69 W BROADWAY EUGENE, ORE.

- OPEN ROADS
- OLD ROADS
- TRAILS
- STREAMS



30

29

Personal property
of
JAMES E. MORTON
Mining Engineer

481369

MAP OF PART
OF THE
DHEMIA NIMING DISTRICT
1:50,000
1950

