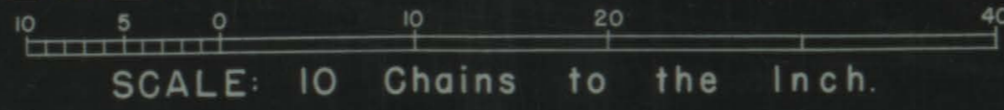
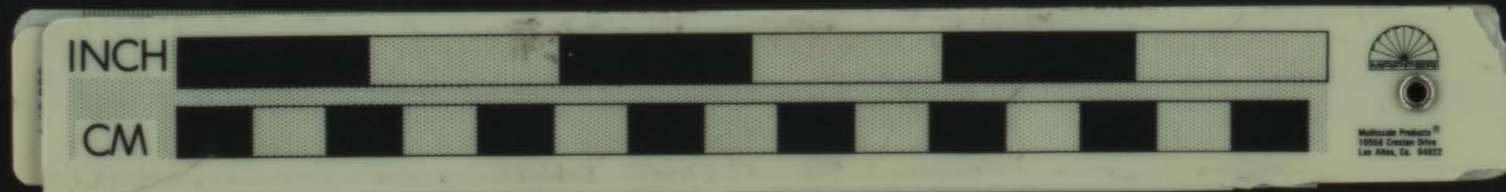


TOWNSHIP N° 34 SOUTH, RANGE N° 8 WEST, OF THE WILLAMETTE MERIDIAN, OREGON.
SUPPLEMENTAL PLAT OF SECTION 36.



431650



PUBLIC SURVEY OFFICE
PORTLAND, OREGON, MARCH 18, 1941.
THE ABOVE SUPPLEMENTAL PLAT OF SECTION 36, TOWNSHIP NO. 34 SOUTH, RANGE NO. 8 WEST,
OF THE WILLAMETTE MERIDIAN, OREGON, BASED UPON THE PLATS APPROVED APRIL 9, 1920, AND
MAY 14, 1928, SHOWING LOTTINGS OF FRACTIONAL AREAS CREATED BY THE SEGREGATION OF THE
GOLD LEAF AND GENEVIEVE PLACERS OF MINERAL SURVEY NO. 865, TO ACCOMMODATE STATE OF
OREGON APPLICATION ROSEBURG 022508, PREPARED IN ACCORDANCE WITH INSTRUCTIONS
CONTAINED IN THE COMMISSIONER'S LETTER "N" DATED MARCH 8, 1941, IS HEREBY APPROVED.

UNITED STATES
DEPARTMENT OF THE INTERIOR
GENERAL LAND OFFICE
WASHINGTON, D.C., JULY 8, 1941.
THE AMENDED LOTTINGS REPRESENTED
BY THIS SUPPLEMENTAL PLAT HAVING
BEEN CORRECTLY MADE IN ACCORDANCE
WITH THE REGULATIONS OF THIS OFFICE,
THE PLAT IS HEREBY ACCEPTED.

Joseph A. Gurney
DISTRICT CADASTRAL ENGINEER.

Joel David Wolfson
ASSISTANT COMMISSIONER.

R.H. [unclear]

THE UNIVERSITY OF CHICAGO PRESS
530 N. Dearborn Street, Chicago, IL 60610
Tel: (773) 707-3000 Fax: (773) 707-0800
www.press.uchicago.edu



41
11
13

43 053



44 054