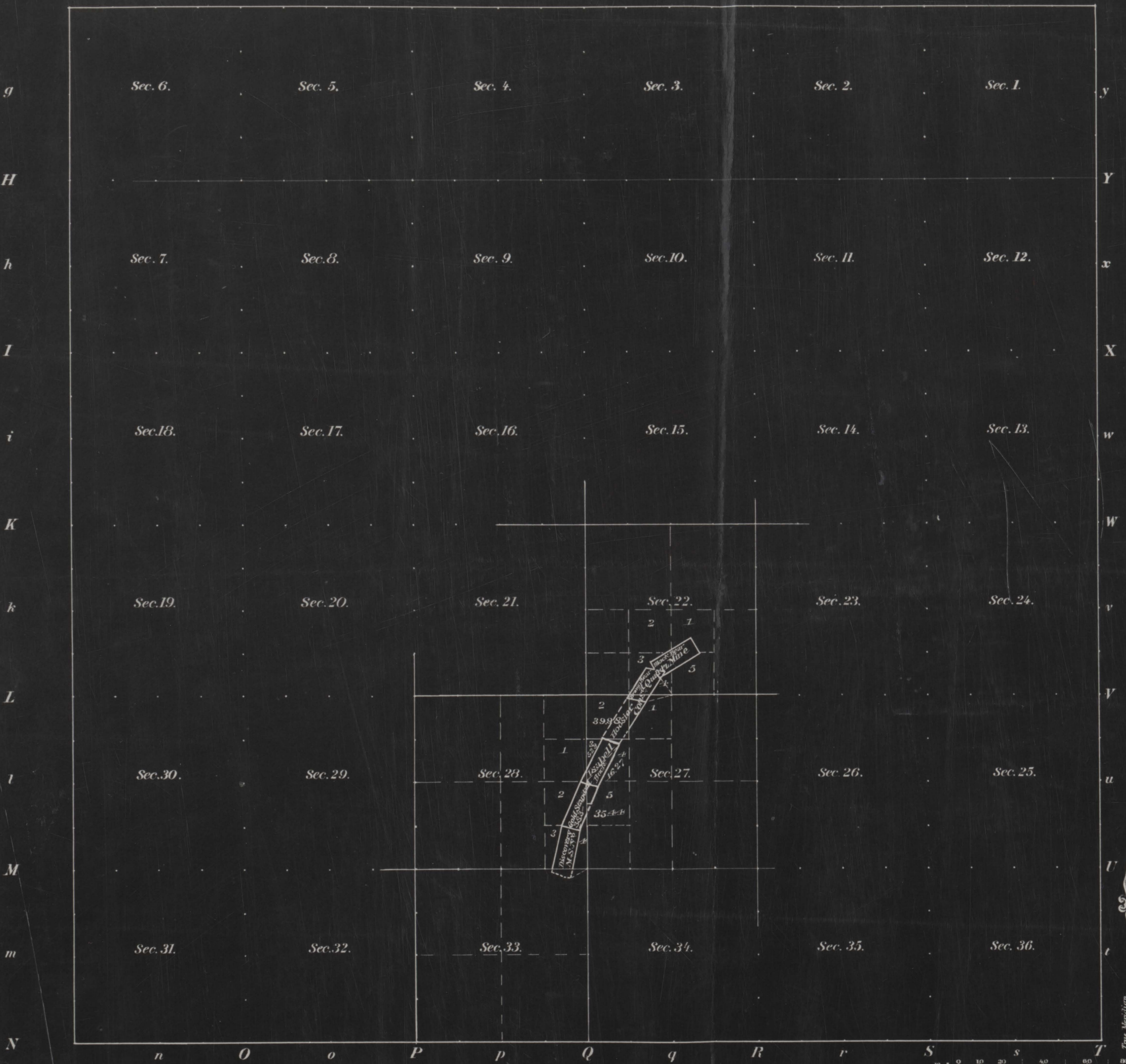
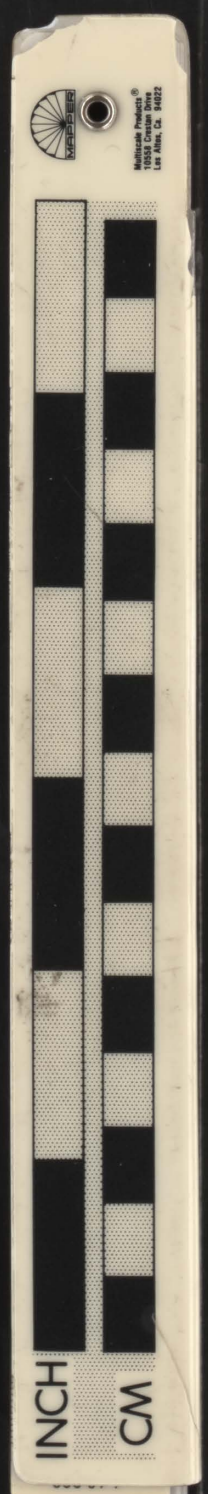


Township No 32 South Range No 7 West of the Willamette Meridian, Oregon.

G f F e E d D c C b B a A



431652



Meanders of

Posts	Courses	Ch <sup>2</sup> Lk <sup>2</sup>	Posts	Courses	Ch <sup>2</sup> Lk <sup>2</sup>	Posts	Courses	Ch <sup>2</sup> Lk <sup>2</sup>

The above Plat showing changes in areas and lottings in Secs 27 & 33, Tp. No 32 S. R. No 7 W. W. M. Oregon, consequent upon platting Amended Mil. Sur. No 382, in accordance with Commissioner's letter N. dated Jan'y 9, 1901, is correct and hereby approved. U.S. Surveyor General's Office Portland, Oregon. April 18, 1901.

Robert A. Habersham U.S. Survey Gen'l for Oregon

Total number of Acres

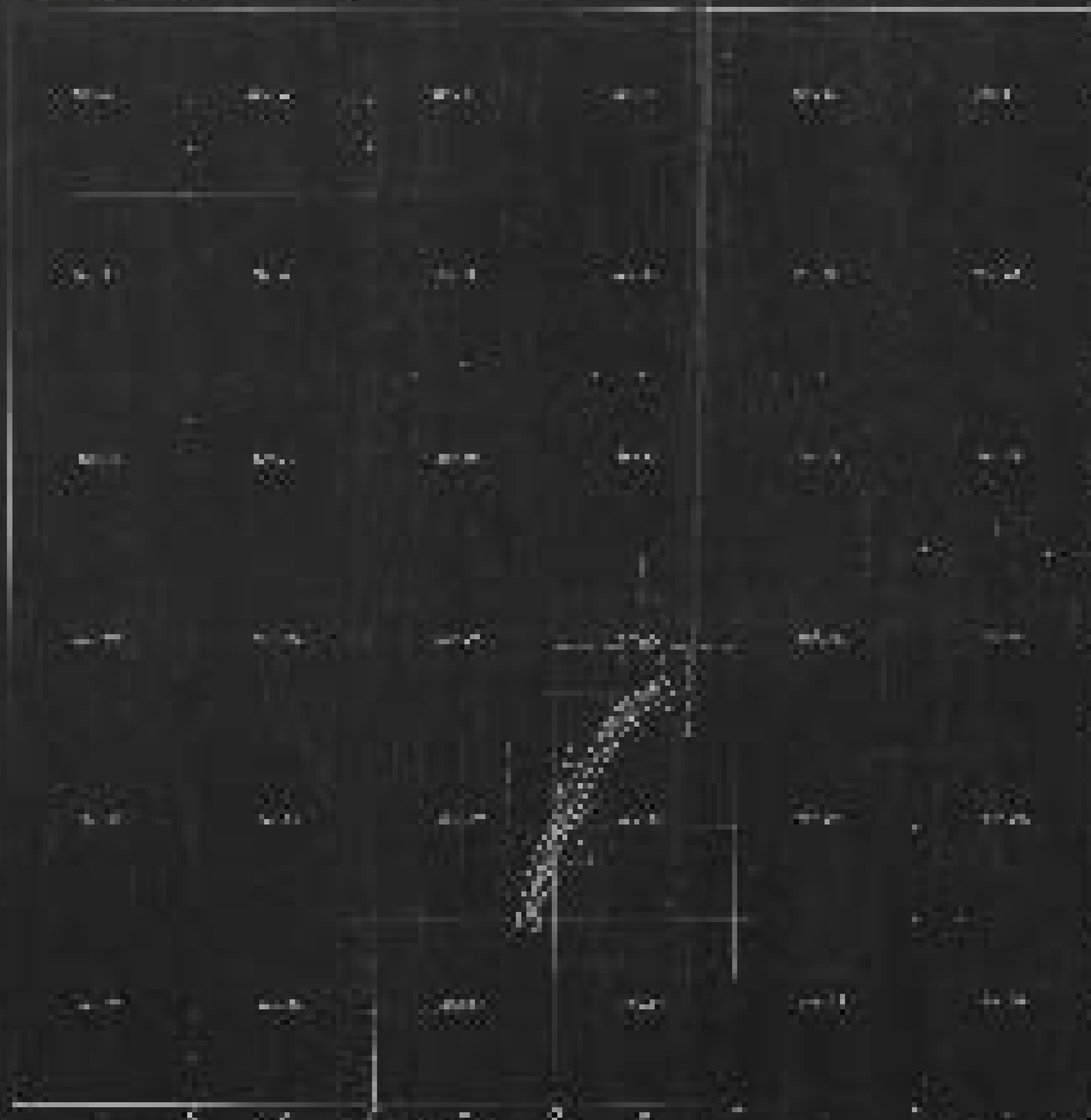
Scale 40 Chains to an Inch.

Surveys Designated	By Whom Surveyed	Date of Contract	Amount of Surveys	When Surveyed
			M. Ch <sup>2</sup> Lk <sup>2</sup>	
Township lines				
Subdivisions				

The above Map of Township No 32 South of Range No 7 West of the Willamette Meridian is strictly conformable to the field notes of the survey thereof on file in this Office which have been examined and approved. Surveyor General's Office. Sur. Gen'l.

431657

Temperature of 20.5°C with Range of 7.7°C (at 10.0°C) - 20.5°C (at 20.5°C)



Time	Temperature
0	10.0
1	11.5
2	13.0
3	14.5
4	16.0
5	17.5
6	19.0
7	20.0
8	20.5
9	20.5
10	20.5

Temperature of 20.5°C with Range of 7.7°C (at 10.0°C) - 20.5°C (at 20.5°C)

Time: 10.0

Temperature: 20.5

Temperature of 20.5°C with Range of 7.7°C (at 10.0°C) - 20.5°C (at 20.5°C)

Time: 10.0

Temperature: 20.5