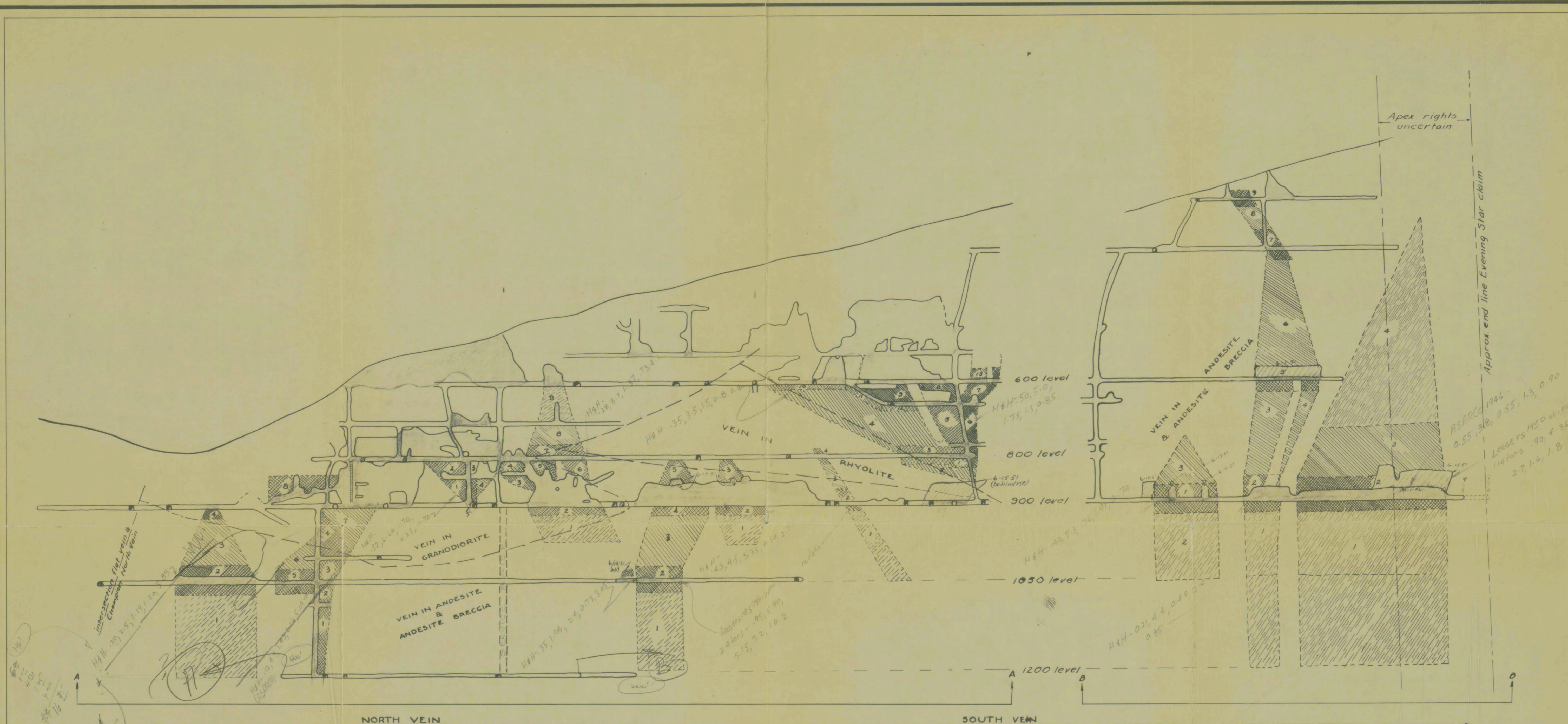


24 - 23  
22 - 14



36  
37 35

36  
35

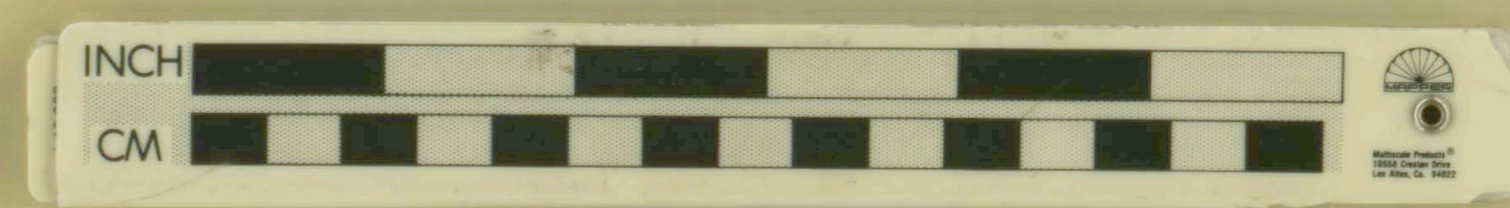
SHOOT A	SHOOT B	SHOOT C	SHOOT D	SHOOT E	SHOOT F	SHOOT G	SHOOT H	SHOOT I	SHOOT J	SHOOT K
1. 4700T, 25', 12.50	1. 580T, 31', 9.51	1. 125T, 10', 17.	1. 1650T, 26', 13.00	1. 2200T, 21', 31	1. 880T, 25', 21.30	1. 600T, 21', 14	1. 290T, 24.3, 11.38	1. 1100T, 31', 13.00	1. 2800T, 20', 12.	1. 14,600T, 20', 27.
2. 1070T, 25', 12.47	2. 165T, 22.5, 18.26	2. 190T, 9', 20.58	2. 550T, 26', 13.00	2. 540T, 21', 30.59	2. 350T, 25', 21.30	2. 120T, 21', 13.79	2. 280T, 24', 11.	2. 3800T, 30', 13.	2. 330T, 20', 11.74	2. 1,850T, 20', 27.13
3. 1500T, 25', 12.00	3. 250T, 21', 12.42	3. 30T, 16', 10.47	3. 150T, 26', 13.90	3. 1900T, 26', 21.50	3. 225T, 18', 25.	3. 180T, 20', 15.	3. 275T, 24.3, 11.38	3. 1340T, 30', 13.	3. 1350T, 19', 16.	3. 4100T, 20', 27.
4. 135T, 28', 11.60	4. 360T, 28', 12.85	4. 60T, 14', 15.	4. 150T, 21.5, 16.42	4. 460T, 27.5, 14.50	4. 50T, 20', 18.25	4. 3500T, 28', 15.	4. 3500T, 28', 15.	4. 370T, 35', 17.	4. 370T, 35', 17.	4. 8,000T, 20', 27.
	5. 420T, 21', 12.26	5. 50T, 14', 15.55	5. 120T, 13', 20.14	5. 415T, 27', 14.00	5. 290T, 24.3, 11.38	5. 850T, 33', 36.50	5. 850T, 33', 36.50	5. 530T, 23', 18.60	5. 530T, 23', 18.60	
	6. 400T, 20', 12.00		6. 170T, 22', 13.61		6. 400T, 33', 23.66	6. 400T, 33', 23.66	6. 400T, 33', 23.66	6. 2400T, 17', 18	6. 2400T, 17', 18	
	7. 875T, 28', 12.00		7. 260T, 17', 13.29		7. 120T, 24', 20.	7. 120T, 24', 20.	7. 120T, 24', 20.	7. 220T, 16', 18.	7. 220T, 16', 18.	
	8. 670T, 23', 11.63		8. 440T, 19', 13.		8. 225T, 40', 40.	8. 225T, 40', 40.	8. 225T, 40', 40.	8. 280T, 20', 20.	8. 280T, 20', 20.	
			9. 400T, 20', 13.		9. 455T, 33', 20.	9. 455T, 33', 20.	9. 455T, 33', 20.	9. 110T, 20', 22.18	9. 110T, 20', 22.18	
					10. 260, 30', 20.	10. 260, 30', 20.	10. 260, 30', 20.			
					11. 200, 33', 24.41	11. 200, 33', 24.41	11. 200, 33', 24.41			
					12. 142, 30, 20	12. 142, 30, 20	12. 142, 30, 20			
					13. 100, 14', 19.64	13. 100, 14', 19.64	13. 100, 14', 19.64			

Note: Block figures are: 1, estimated tonnage; 2, average width in inches; 3, dollar value from Au at \$29, Ag at \$50, Cu at 2.20 per unit, Pb at 1.50 per unit and zinc at 0.40 per unit.

- Measured ore & block number
- Indicated ore
- Inferred ore

H&H composite averages (checked by ASRCoin shoots B&K)  
Show % Au, % Ag, % Cu, % Pb, % Zn

NSR  
1942  
Au 29  
Ag 407  
Cu 412  
Pb 125  
Zn 072



431662

LONGITUDINAL SECTION  
CHAMPION MINE  
BOHEMIA MINING DISTRICT, OREGON

PROJECTED FROM H&H MINES INC. PLAN MAP  
ORE SHOOTS BLOCKED FROM H&H ASSAY MAP

1" = 100'

OCT. '46

COX & WILLIAMSON

stopping to 1951

Fig 3

26

22 - 23  
24 - 23