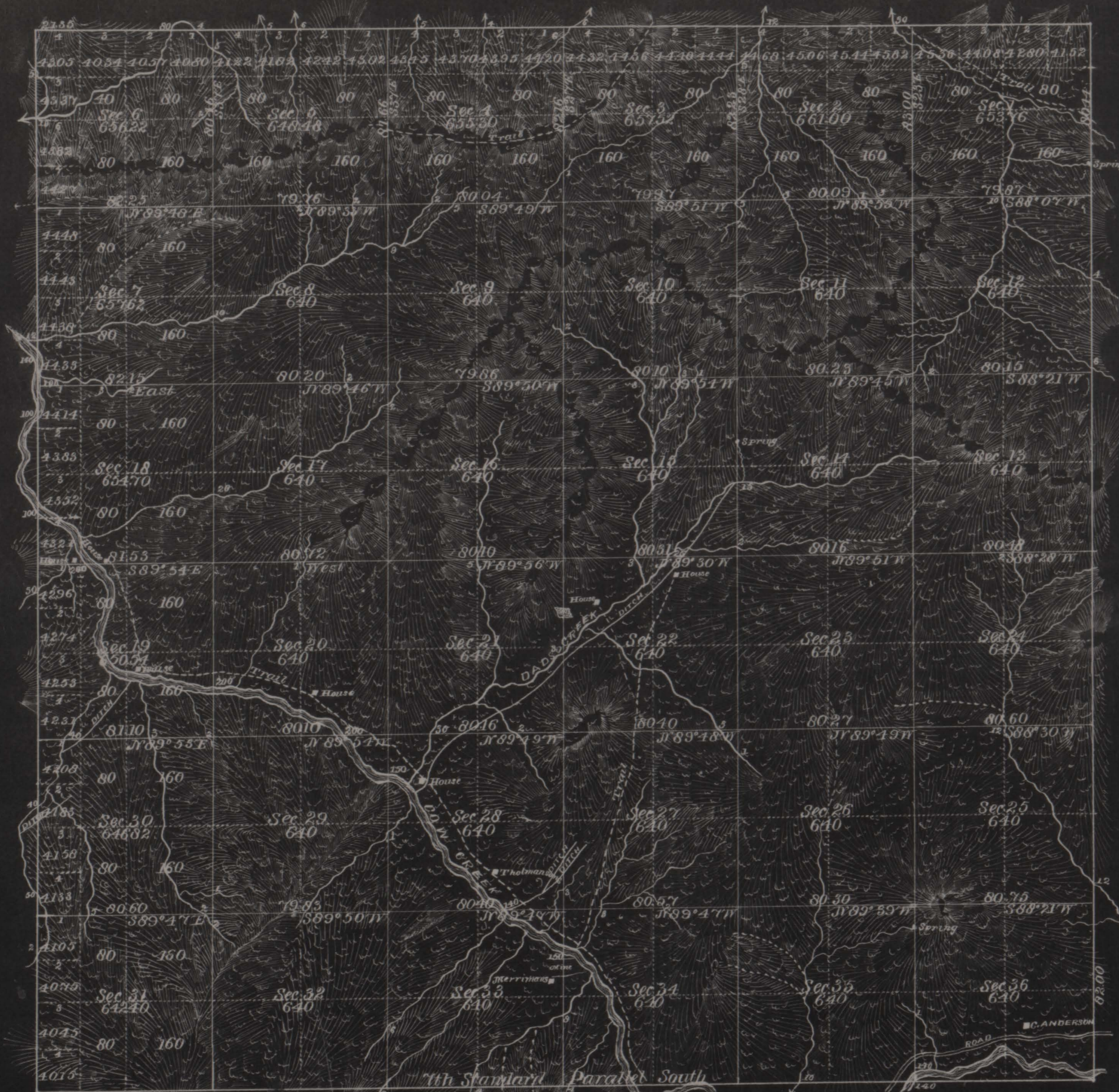


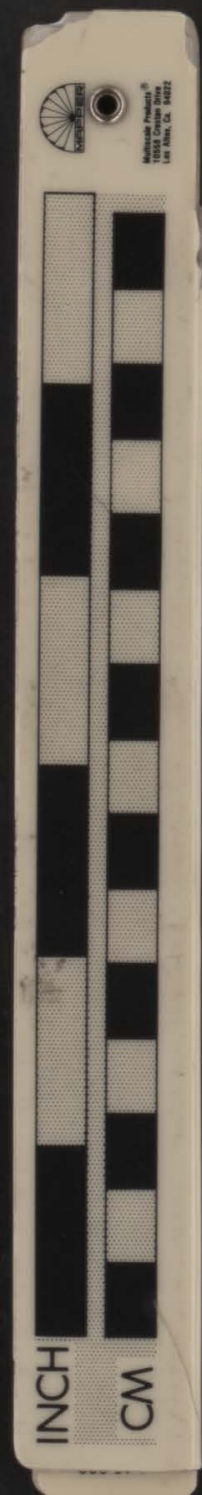
Township No. 32 South

Range No. 7 West

Willamette Meridian, Oregon.



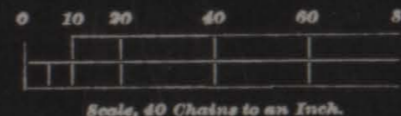
ACCEPTED BY THE HON. COMMISSIONER G. L. O. JUNE 14 1882



431668

Total number of Acres 23,184.36

SURVEYS DESIGNATED.	BY WHOM SURVEYED.	NO.	DATE OF CONTRACT.	AMOUNT OF SURVEYS.			WHEN SURVEYED.	MEAN DECLINATION.
				Miles.	Chains.	Links.		
Township Lines	W. H. Byars	420	Sept 16 1881	12	01	35		
Resurvey E. B. U'y	do do do	do	do do do	6	02	44		
Subdivisions	do do do	do	do do do	60	22	56	Oct 25 to Nov 9, 1881	18° E.



The above map of the Subdivisions of Township No. 32 South of Range No. 7 West of the Willamette Meridian, Oregon, is strictly conformable to the Field Notes of the survey thereof on file in this office, which have been examined and approved.

U. S. Surveyor-General's Office,
Portland, Oregon,

May 31, 1882 James C. Tolman
Surveyor-General of Oregon.



3158

--	--	--	--	--

This is a very faint and illegible block of text, possibly a description or a list of items.