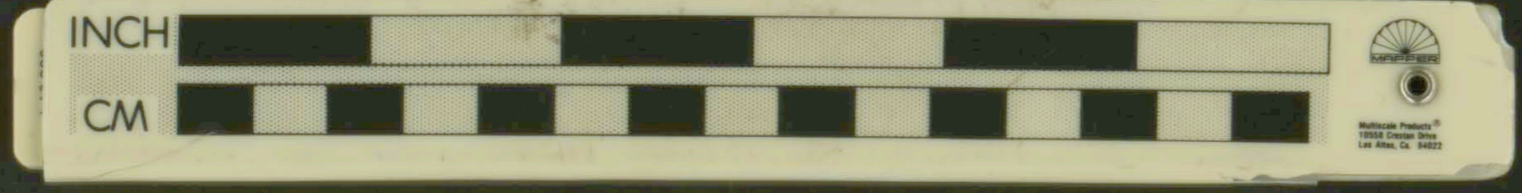
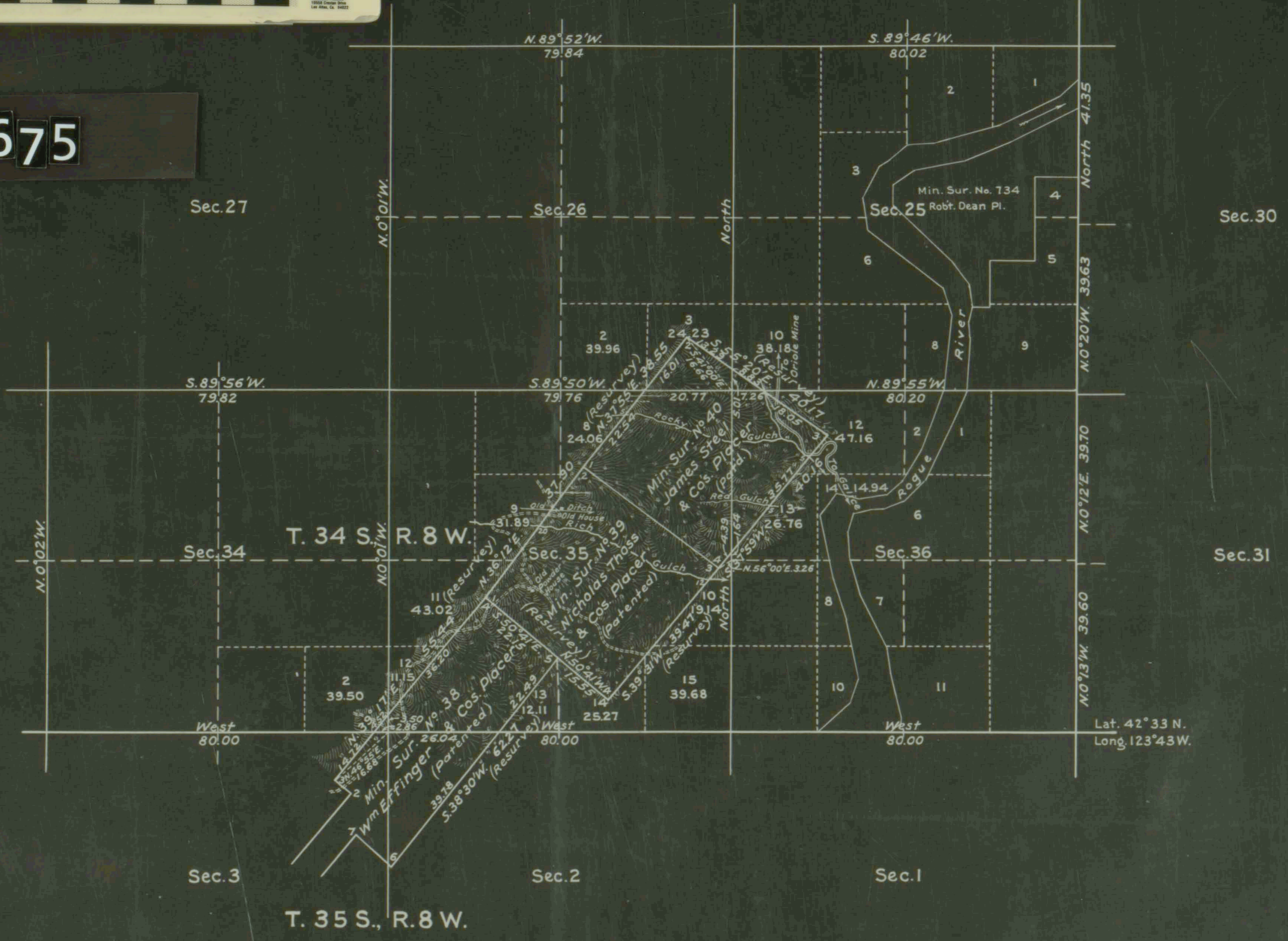


SUPPLEMENTAL PLAT OF
SECTIONS 25, 26, 34, 35 & 36 TOWNSHIP N° 34 SOUTH, RANGE N° 8 WEST,
WILLAMETTE MERIDIAN, OREGON.

SCALE: 20 CHAINS TO AN INCH.



431675



26 24
| | | | |
27 25 23

22 24
| | | | |
23 25

LINES DESIGNATED	BY WHOM SURVEYED	GROUP N°	DATE	MILEAGE		WHEN SURVEYED	
				MLS.	CHS.	BEGUN	COMPLETED
MINERAL SURVEYS	JOHN G. COLLINS	124	APRIL 1, 1927.	3	57.16	OCT. 12, 1927	OCT. 19, 1927.
CONNECTIONS				1	4.14		

Office of U. S. Supervisor of Surveys
Denver, Colorado, May 14, 1928.
The above supplemental plat of Sections 25, 26, 34, 35 and
36, Township N° 34 South, Range N° 8 West of the Willamette Meridian, Oregon,
is strictly conformable to the field notes of the retracement and
resurvey of Min. Sur. N° 38, Wm. Effinger & Co's. Placer, (Patented);
Min. Sur. N° 39, Nicholas Thoss & Co's. Placer, (Patented) & Min. Sur. N° 40,
James Steel & Co's. Placer, (Patented), which have been examined
and approved.

DEPARTMENT OF THE INTERIOR
GENERAL LAND OFFICE
Washington, D.C., June 30, 1928.
The survey represented by this plat
having been correctly executed in
accordance with the requirements of
law and the regulations of this
office, is hereby accepted.

Wm. H. Cannon
U. S. Supervisor of Surveys.

Thomas Howell
Assistant Commissioner.

18 —
— 19
20 —
— 21
22 —

CMP