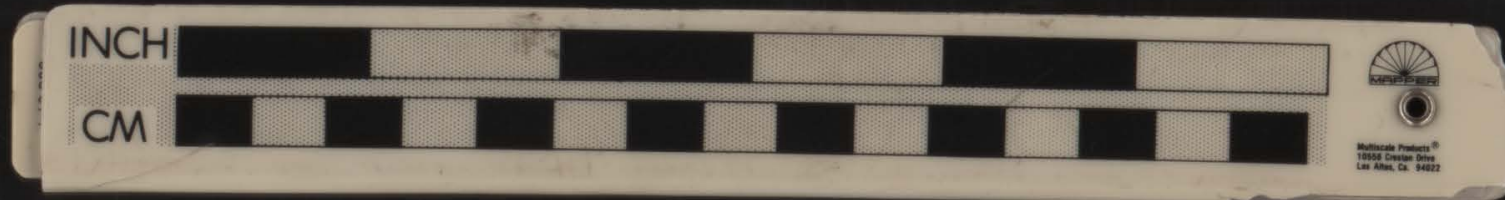


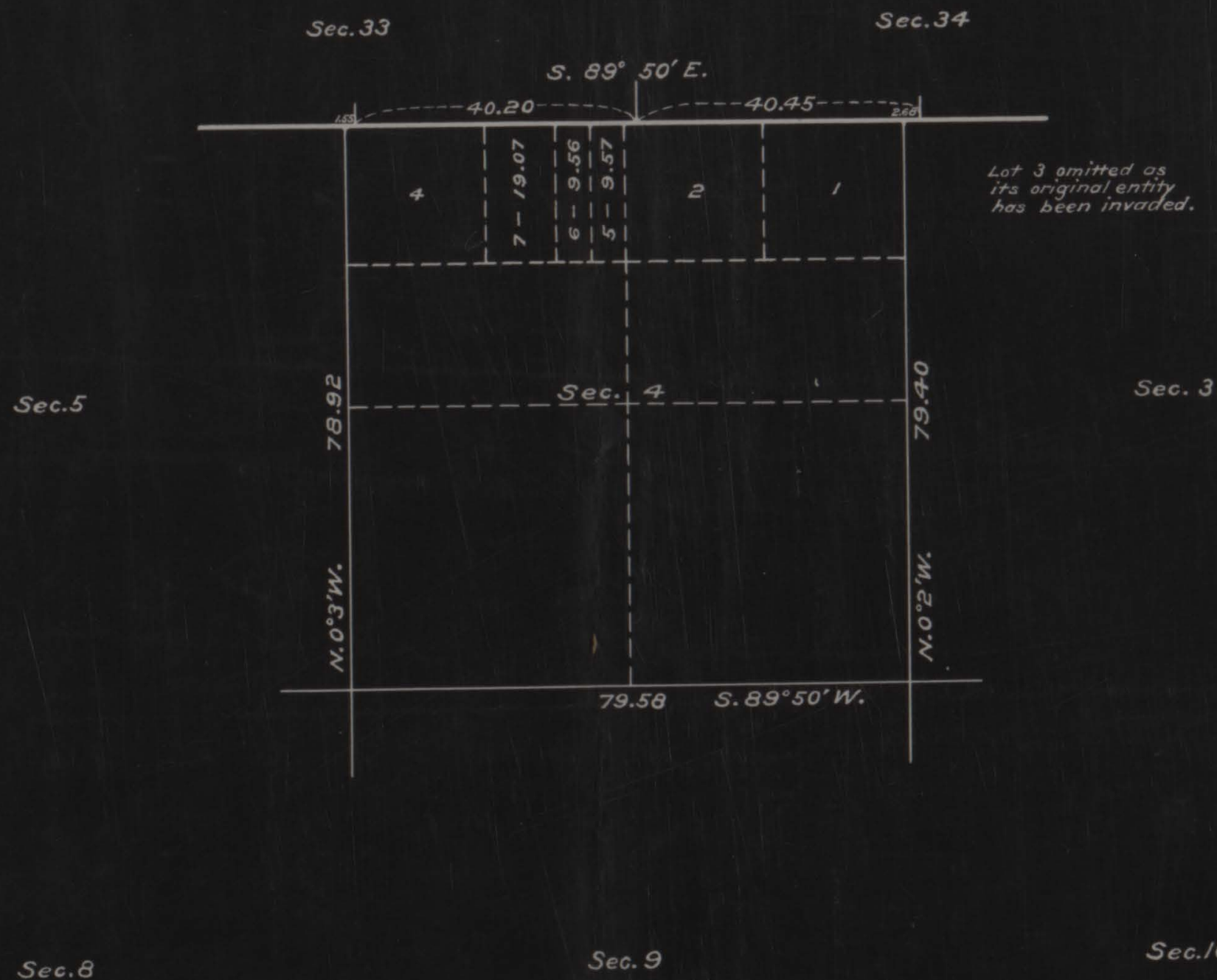
SUPPLEMENTAL PLAT

OF

Section 4—Township No. 32 South Range No. 10 West of the Willamette Meridian, Oregon.
(Superseding Plat of said section approved May 24, 1902)
Scale 20 chains to an inch.

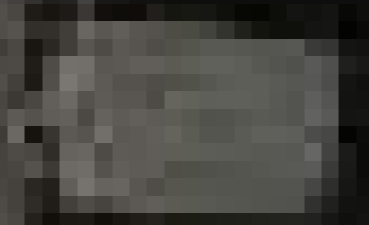
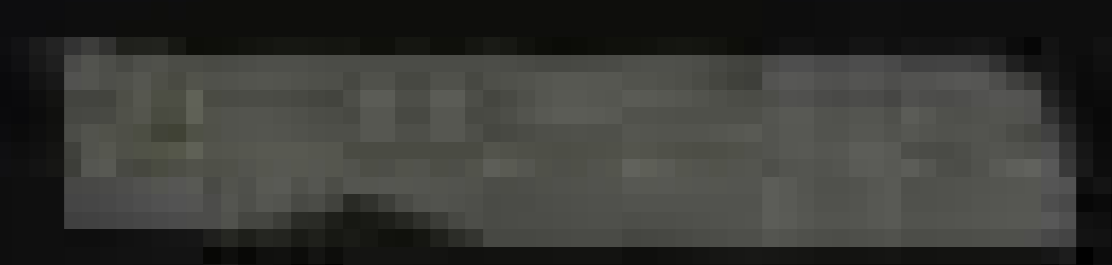
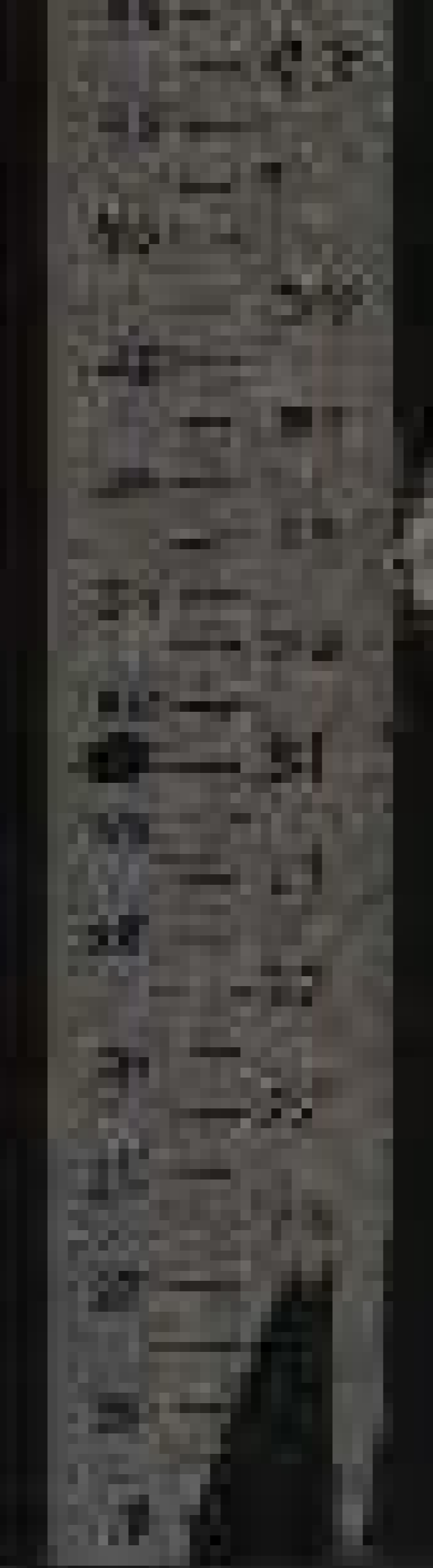


431680



This Supplemental Plat showing the subdivision of old Lot 3, Section 4, T.32S. R. 10W. of the Willamette Meridian Oregon, is made for the purpose of obtaining the areas and legal descriptions thereof, in order to accommodate homestead entry, Roseburg 07296, of Joseph Henry Magill; prepared in compliance with instructions from the Hon. Ass't. Commissioner of the General Land Office, contained in letter "E" (JAD) dated July 31, 1916.
U.S. Surveyor General's Office } Edward L. North
Portland, Oregon, Aug. 16, 1916 } U.S. Surveyor General
of Oregon.

ACCEPTED BY THE HON. COMMISSIONER G. L. O. September 30, 1916



43.630

