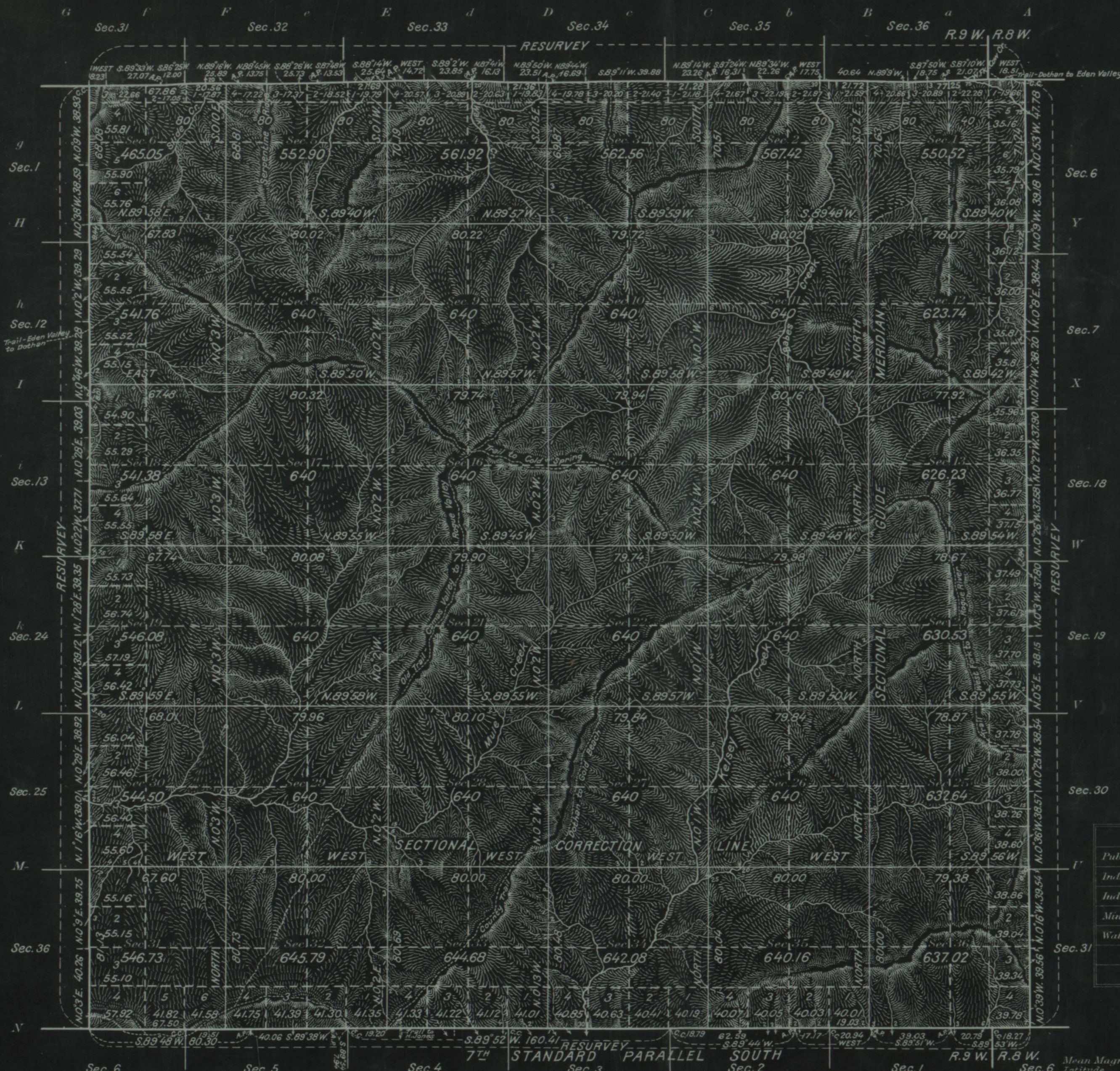
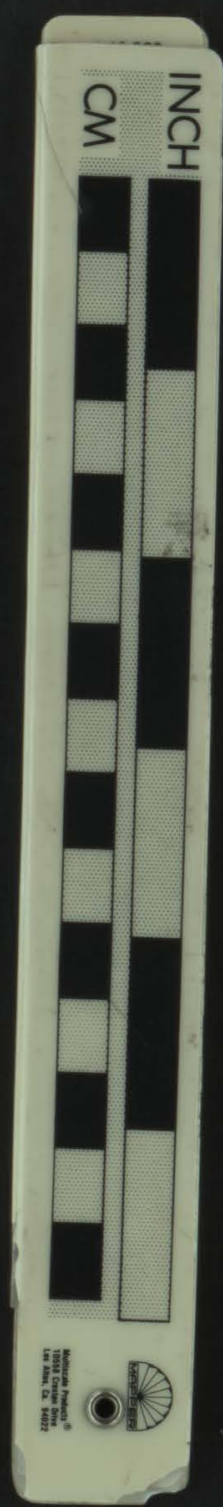


Township No. 32 South Range No. 9 West of the Willamette Meridian, Oregon.



431682



Areas in Acres	
Public Land	21943.69
Indian Reservation	
Indian Allotments	
Mineral Claims	
Water Surface	
Total Area	21943.69

Scale 40 Chains to an inch

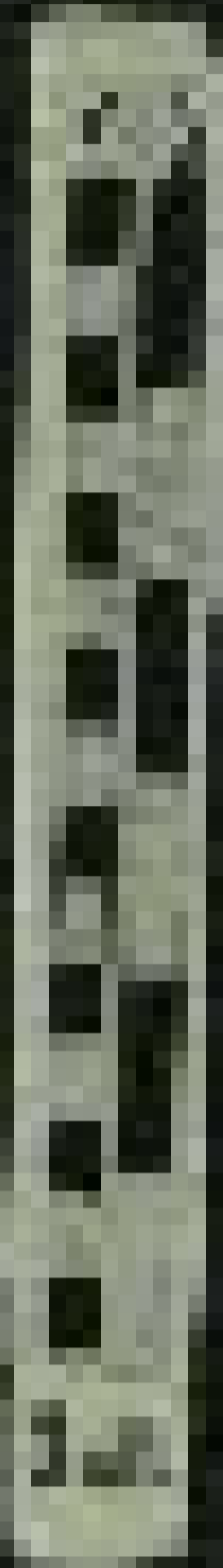
Mean Magnetic Declination 20° 45' E.
 Latitude 42° 44' N.
 Longitude 123° 43' W.
 At S. E. Cor. of Tp

Surveys Designated	By Whom Surveyed	Group		Amount of Surveys			When Surveyed	
		No.	Date of Instructions	Mls.	chs.	lks.	Began	Completed
Resurvey of N.E. & W. Bdr's.	Fred Menash & Gerald A. Sorrels	35	Dec. 22, 1916.	17	45	65	May 18, 1917.	July 30, 1917.
Resurvey of 7th Std. Par. S.	" " "	"	" " "	5	67	50	June 1, "	Oct. 1, "
Subdivisions.	" " "	"	" " "	58	43	10	" 12, "	July 27 "
Resurvey of N. Bdy.	W. H. Byars.	under	Contract	No.	727		in	1901
" " W. Bdy.	G. S. Pershin.	"	"	"	728		"	1901
Survey of E. Bdy.	Richmond S. Dickerson.	"	"	"	474		"	1883
" 7th Std. Par. S.	" " "	"	"	"	474		"	1883
Retracts of Portion of 7th Std. Par. S.	Ernest P. Rands.	"	"	"	775		"	1909-1911

The above map of Township No. 32 South Range No. 9 West of the Willamette Meridian Oregon is strictly conformable to the field notes of the survey thereof on file in this office, which have been examined and approved

U. S. Surveyor General's Office,
 Portland, Oregon June 29, 1918.

Eward W. Wash
 Surveyor General of Oregon.



491522



35