

PLAN AND VERTICAL SECTION MAXWELL-HIGHLAND AND BAISLEY ELKHORN MINE

TOWNSHIP 8 SOUTH RANGE 37⁺ 38 EAST

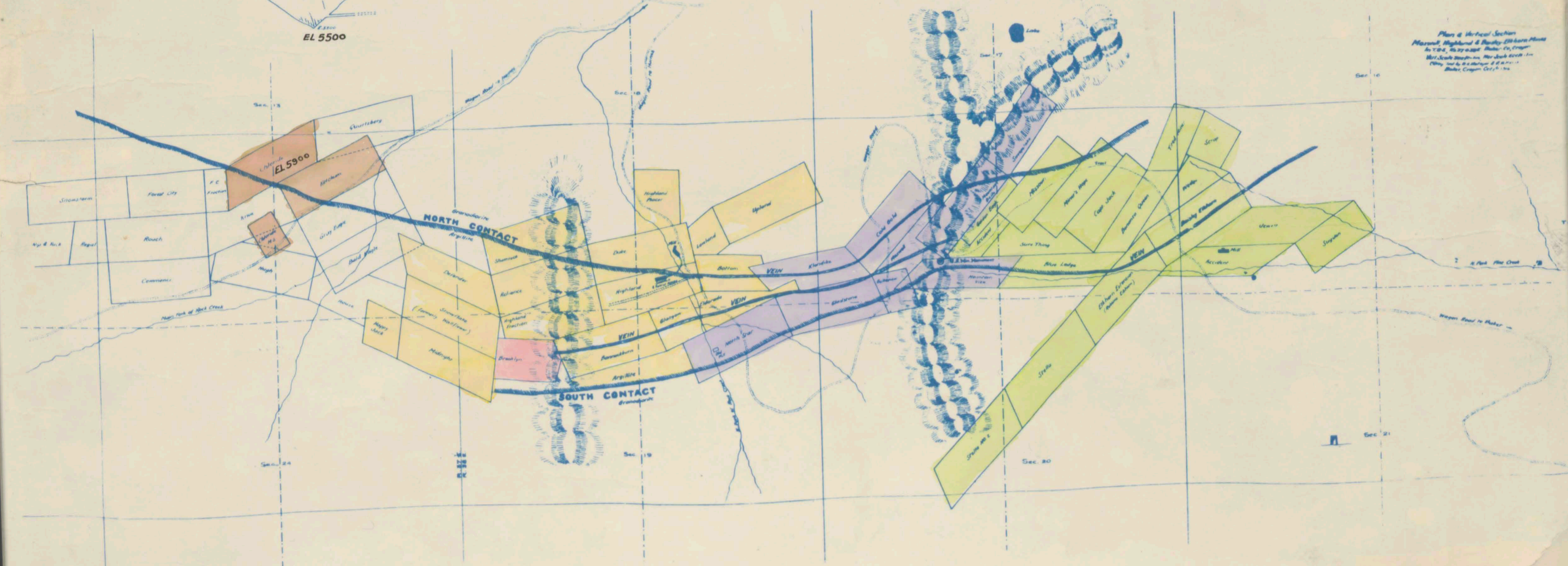
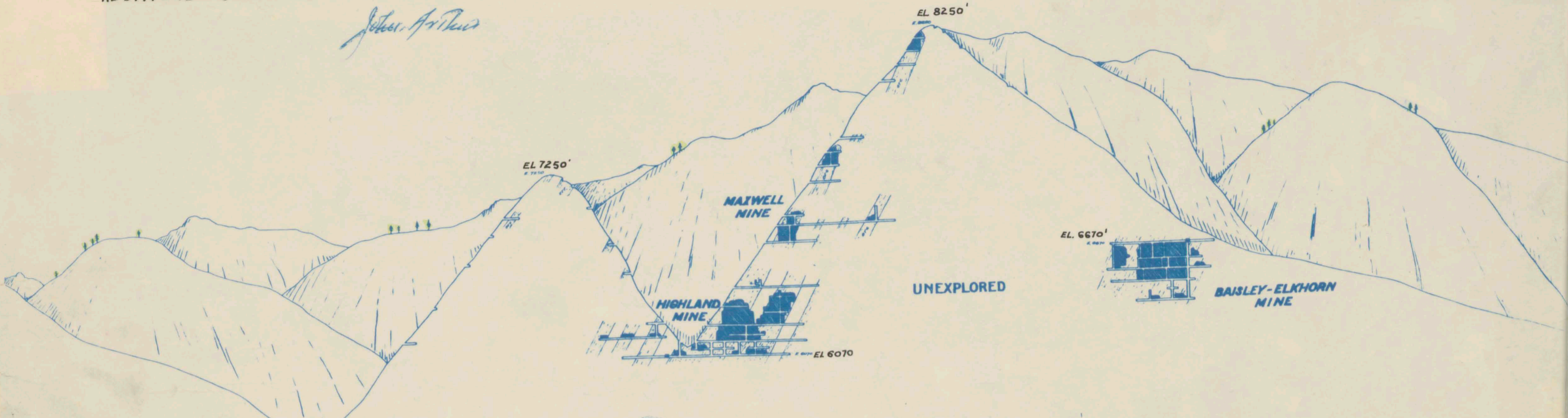
BAKER, OREGON

By G.E. METEGUR + Assistants --- Oct 1-1916

Vertical Scale-- 600 ft = 1"

ADDITIONS + COLOR By JOHN ARTHUR-- FEB 1954

John Arthur



*Plan & Vertical Section
Maxwell, Highland & Baisley-Elkhorn Mines
in T. 8 S., R. 37 E., Baker Co., Oregon
Map Scale 600 ft = 1 inch. Plan Scale 1 inch = 1 mile
Drawn by G.E. Metegur & Assistants
Baker, Oregon Oct. 1-1916*

MAXWELL MINE	
HIGHLAND MINE	
BAISLEY ELKHORN MINE	