

# PLAN AND VERTICAL SECTION MAXWELL-HIGHLAND AND BAISLEY ELKHORN MINE

TOWNSHIP 8 SOUTH RANGE 37<sup>+</sup> 38 EAST

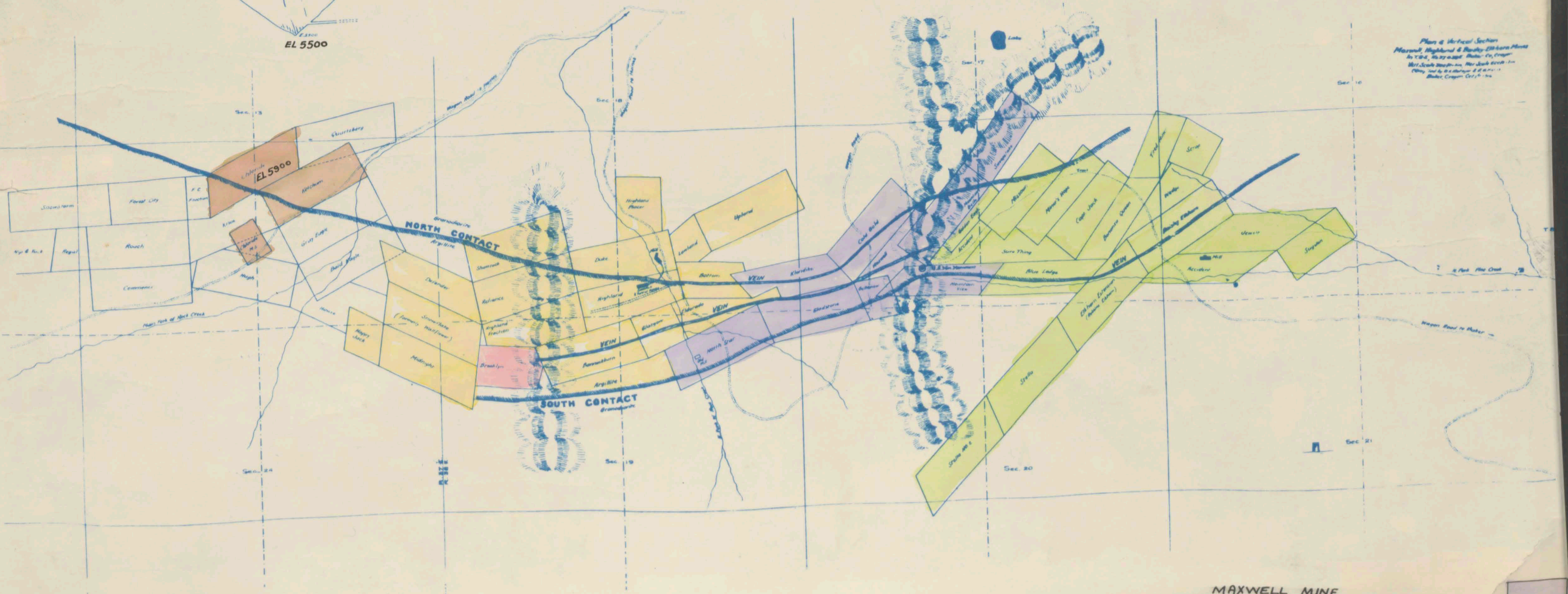
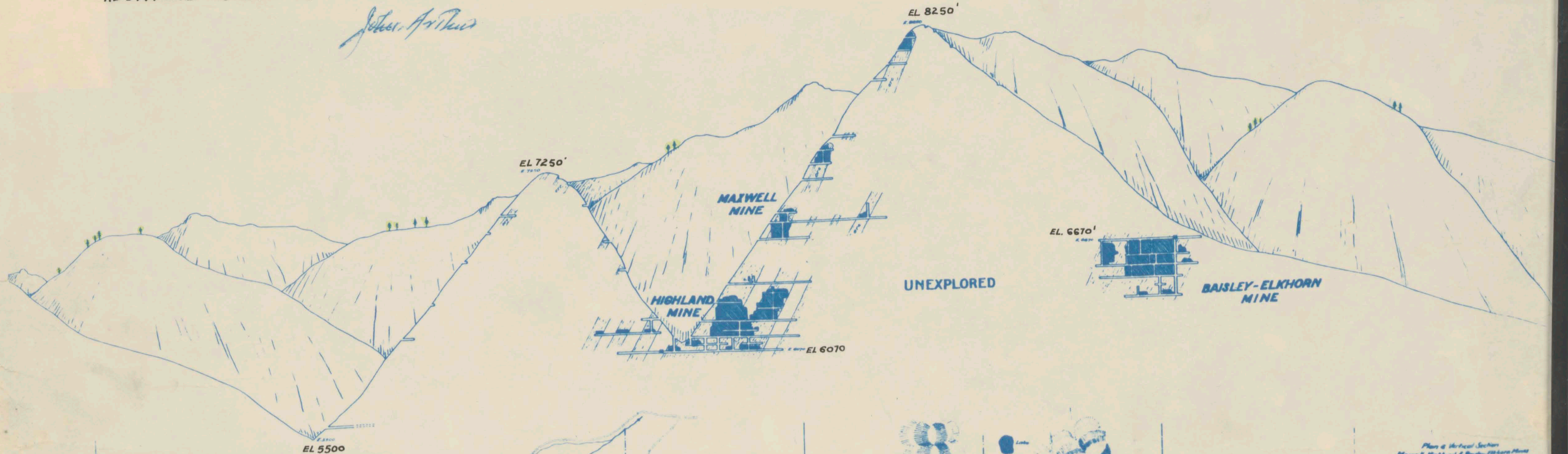
BAKER, OREGON

By G.E. METEGUR + Assistants --- Oct 1-1916

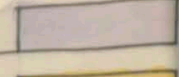
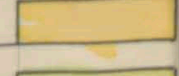
Vertical Scale-- 600 ft = 1"

ADDITIONS + COLOR By JOHN ARTHUR-- FEB 1954

*John Arthur*



*Plan & Vertical Section  
Maxwell, Highland & Baisley Elkhorn Mines  
By G.E. METEGUR, Baker, Ore., Oregon  
1916, and by JOHN ARTHUR, Feb. 1954  
Baker, Oregon, Ore.*

MAXWELL MINE	
HIGHLAND MINE	
BAISLEY ELKHORN MINE	