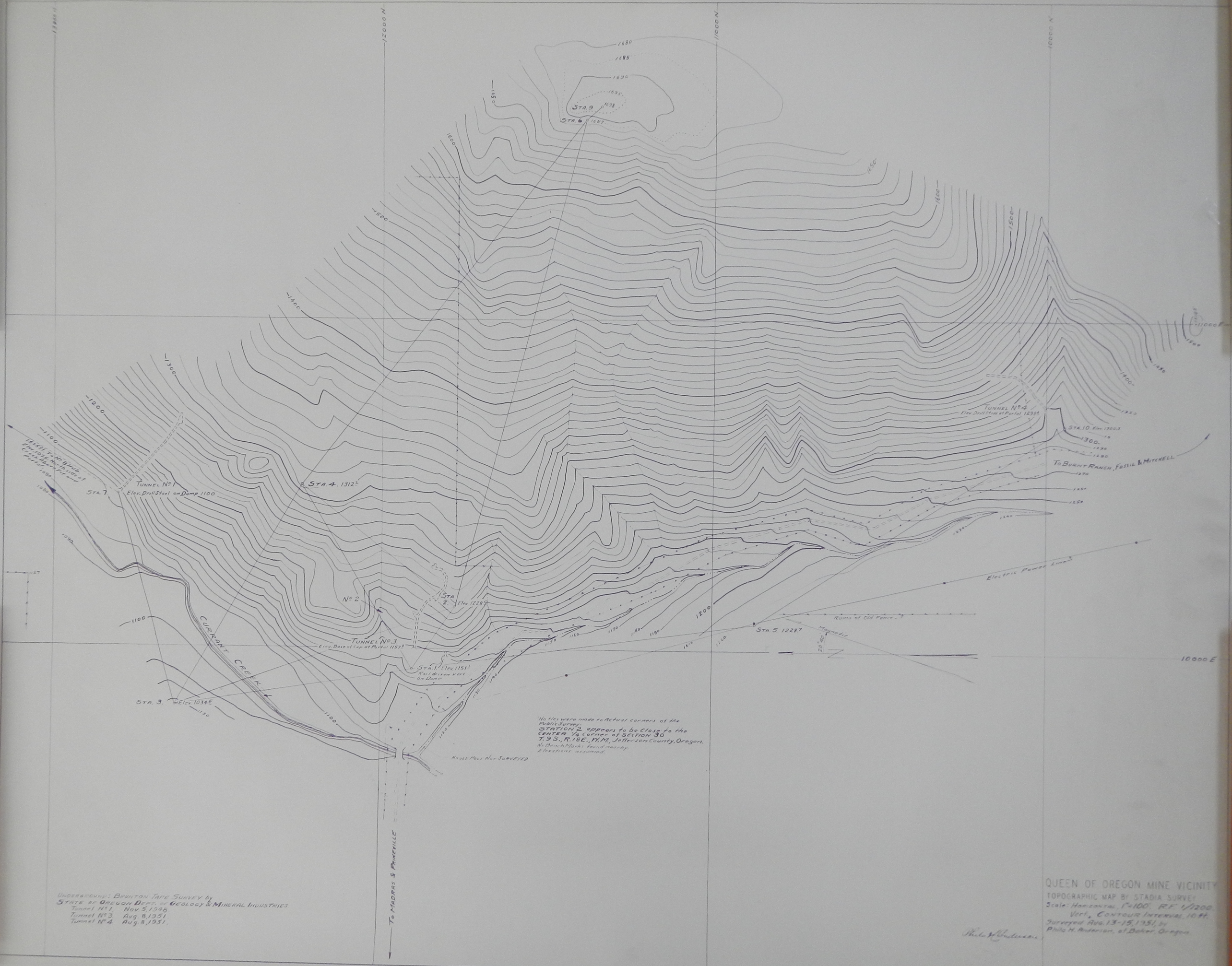


BULLETIN 14 G. VOL. 11, P. 11, 1911. OREGON STATE MINING HISTORICAL SOCIETY



No ties were made to actual corners of the Public Survey.
 STATION 2 appears to be close to the CENTER 1/4 CORNER of SECTION 30 T.9S., R.16E., N.M., Jefferson County, Oregon.
 No Bench Marks found nearby.
 Elevations assumed.

UNDERGROUND: BUNTON TAPE SURVEY BY STATE OF OREGON DEPT. OF GEOLOGY & MINERAL INDUSTRIES
 Tunnel No. 1, Nov. 5, 1936
 Tunnel No. 3, Aug. 8, 1951
 Tunnel No. 4, Aug. 8, 1951.

QUEEN OF OREGON MINE VICINITY
 TOPOGRAPHIC MAP BY STADIA SURVEY
 Scale: Horizontal, 1"=100'; Vertical, Contour Interval, 10 ft.
 Surveyed Aug. 13-15, 1951, by Phil H. Anderson, at Baker, Oregon.

Phil H. Anderson