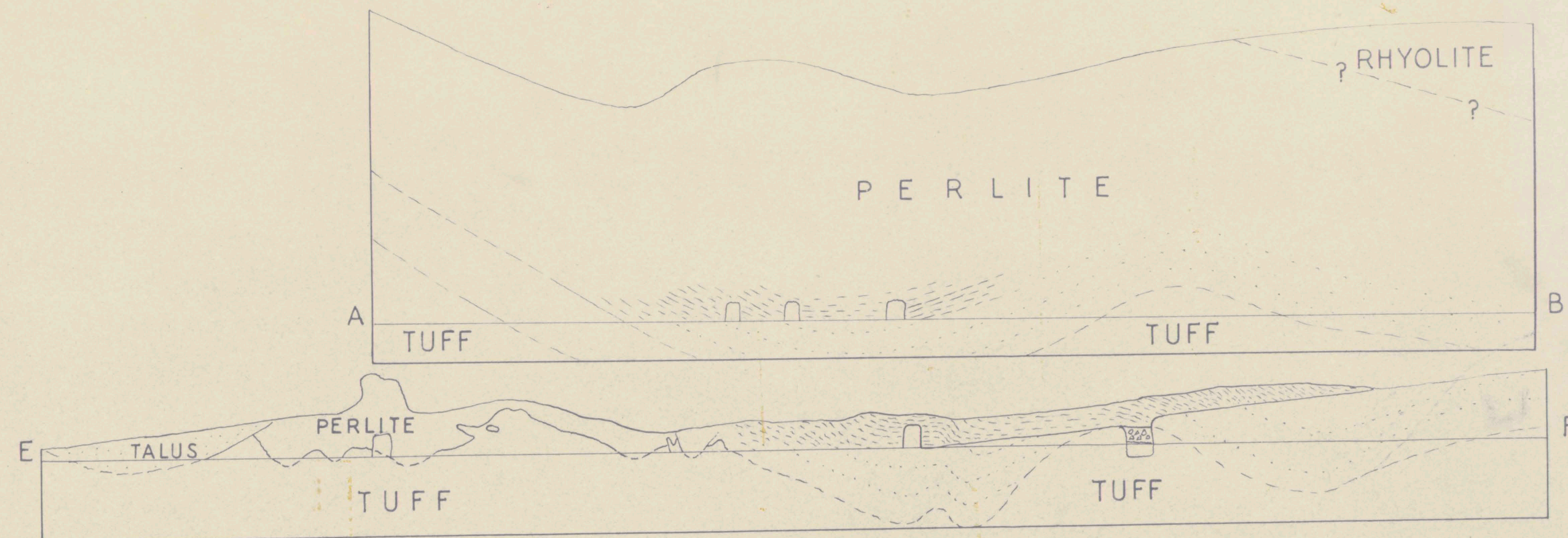


#30



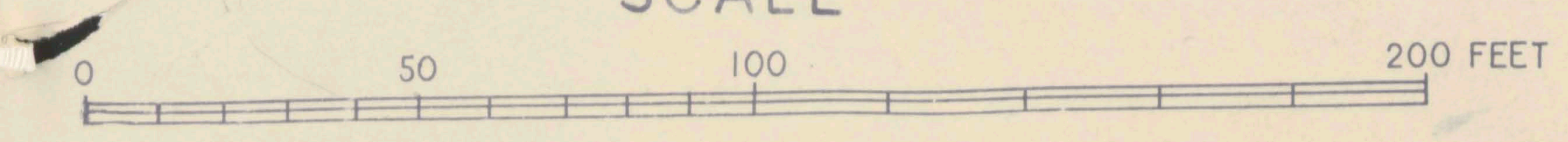
LADY FRANCES MINE  
WASCO COUNTY

NE 1/4 Sec. 24, T.6 S., R.13 E.

LEGEND

- ..... SURFACE CONTACT
- - - - - UNDERGROUND CONTACT
- FLOW LINES
- ⚡ FAULTS

SCALE



Geology by  
John Eliot Allen

41-65-3

