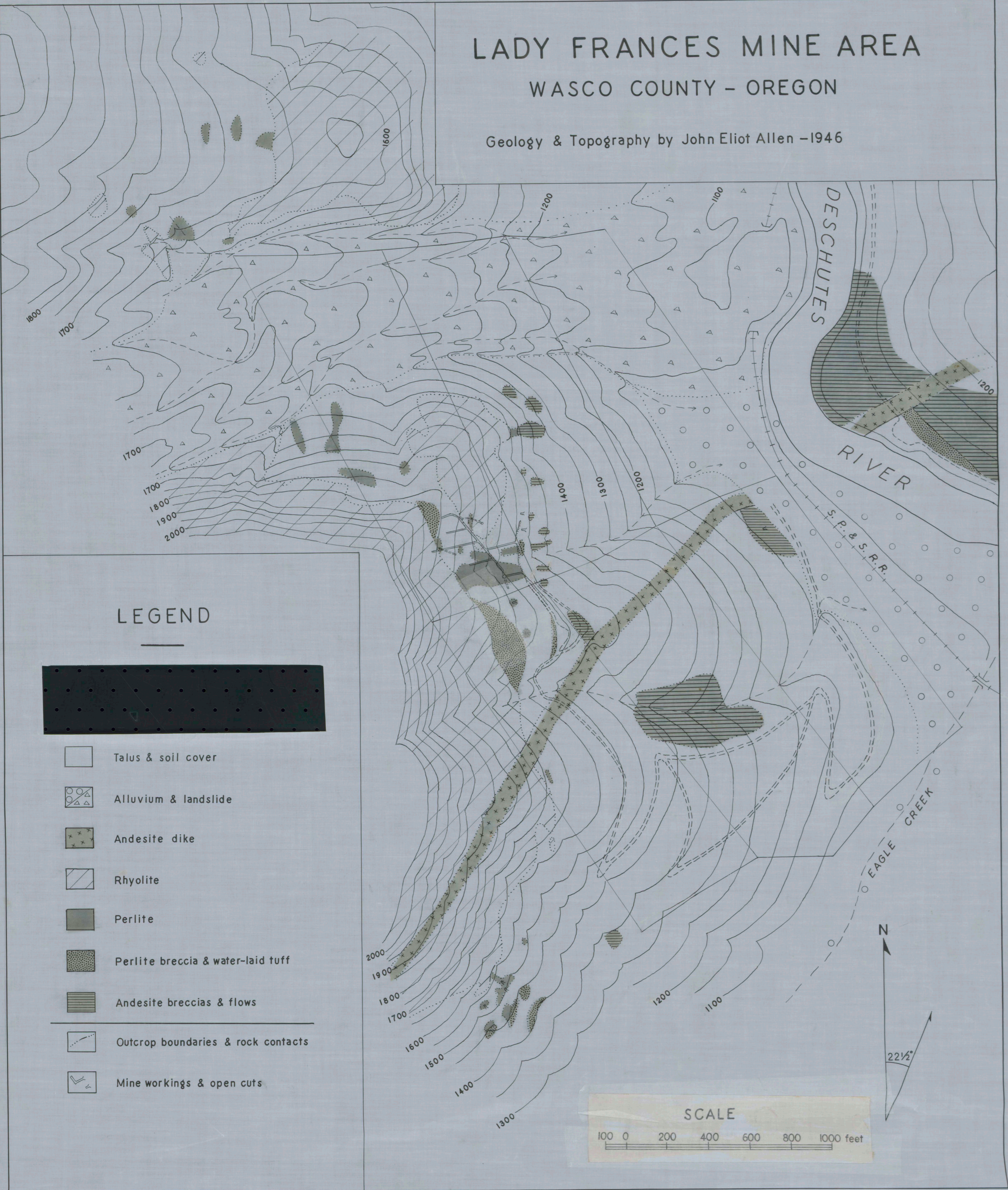


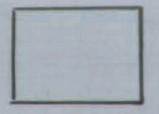
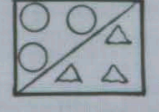
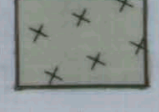



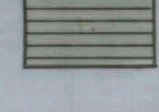
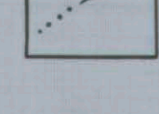
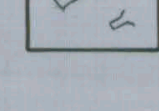
LADY FRANCES MINE AREA WASCO COUNTY - OREGON

Geology & Topography by John Eliot Allen - 1946



LEGEND



-  Talus & soil cover
-  Alluvium & landslide
-  Andesite dike
-  Rhyolite
-  Perlite
-  Perlite breccia & water-laid tuff
-  Andesite breccias & flows
-  Outcrop boundaries & rock contacts
-  Mine workings & open cuts

SCALE

100 0 200 400 600 800 1000 feet

Reduce over 3x
29 x 29