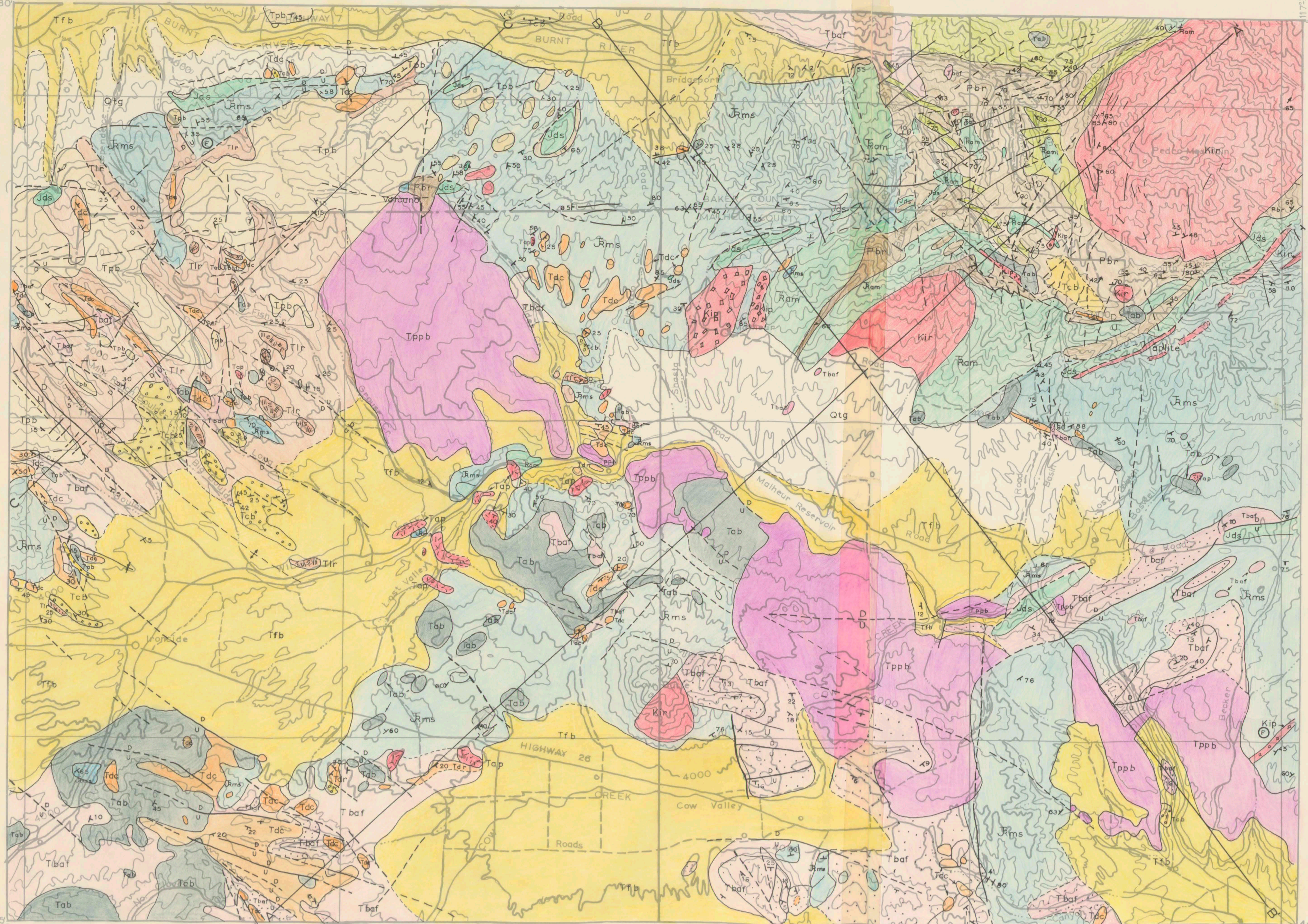


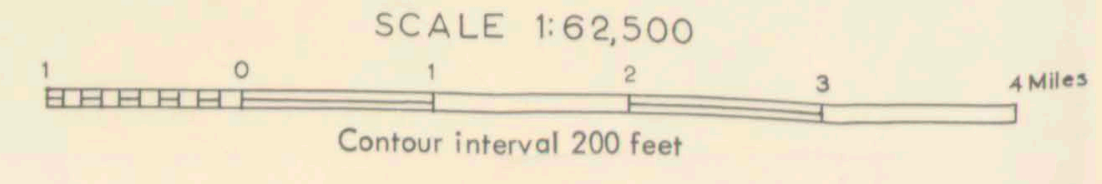
GEOLOGY OF THE NORTHERN HALF OF THE CAVINESS QUADRANGLE, OREGON-PLATE 1.



EXPLANATION

- | | | | |
|------|---|--|--|
| Qtg | Terrace gravels | | |
| Tppb | Plio-Pleistocene basalt | | |
| Tfb | Fine basin fillings | | |
| Tcb | Coarse basin fillings | | |
| Tpb | Unit 5, Platy basalt | | |
| Tir | Unit 4, Littlefield Rhyolite and siliceous volcanoclastic rocks | | |
| Tab | Unit 3, Aphanitic basalt and associated pyroclastic rocks | | |
| Tdc | Unit 2, Dinner Creek Welded Ash-Flow Tuff | | |
| Tbf | Unit 1, Basal ash flows and associated sediments and basalts | | |
| Tap | Andesite porphyry, partially intrusive | | |
| Jms | Mesozoic sedimentary and metasedimentary rocks | | |
| Jds | Diapiric serpentines | | |
| Jam | Alpine mafic rocks | | |
| Pbr | Burnt River Schist | | |
-
- | | |
|-----------|---|
| — — — — — | Contact, dashed where inexact |
| ↘ 5 | Strike and dip |
| - - - - - | Fault, dashed where inferred or inexact |
| → | Lineation |
| ⊙ | Fossil |
-
- | | |
|---|-------------------------------|
| | Intrusive Rocks |
| ■ | Aplite |
| ■ | Cretaceous intrusive porphyry |
| ■ | basalt |
| ■ | Cretaceous intrusive rocks |
| ■ | Jds |
| ■ | Jam |
-
- | | |
|---|--|
| | Miocene volcanic sequence |
| ■ | Unit 3, Aphanitic basalt and associated pyroclastic rocks |
| ■ | Unit 2, Dinner Creek Welded Ash-Flow Tuff |
| ■ | Unit 1, Basal ash flows and associated sediments and basalts |
| ■ | Andesite porphyry, partially intrusive |
-
- | | |
|---|-------------------------------|
| | Cretaceous |
| ■ | Cretaceous intrusive porphyry |
| ■ | basalt |
| ■ | Cretaceous intrusive rocks |
| ■ | Jds |
| ■ | Jam |
-
- | | |
|---|----------------------|
| | Jurassic |
| ■ | Diapiric serpentines |
| ■ | Jds |
| ■ | Jam |
-
- | | |
|---|--------------------|
| | Lower Triassic |
| ■ | Alpine mafic rocks |
| ■ | Jam |
-
- | | |
|---|--|
| | Permian (?) Triassic (?) Jurassic |
| ■ | Mesozoic sedimentary and metasedimentary rocks |
| ■ | Jms |
| ■ | Jds |
| ■ | Jam |

Base map enlarged from Army Map Service, Baker quadrangle, 1:250,000 scale



Geology by Ernest Wolff, 1965