

Issued by the
State of Oregon
Department of Geology and Mineral Industries
Frank Nixon, Director, Portland, Ore.

RECONNAISSANCE GEOLOGIC MAP
OF THE
WALLOWA LAKE QUADRANGLE
OREGON

To accompany Bulletin No. 12
Geology and Topography of the
Northwest Washington Mountains
by
Warren D. Smith, John Eliot Allen
and others

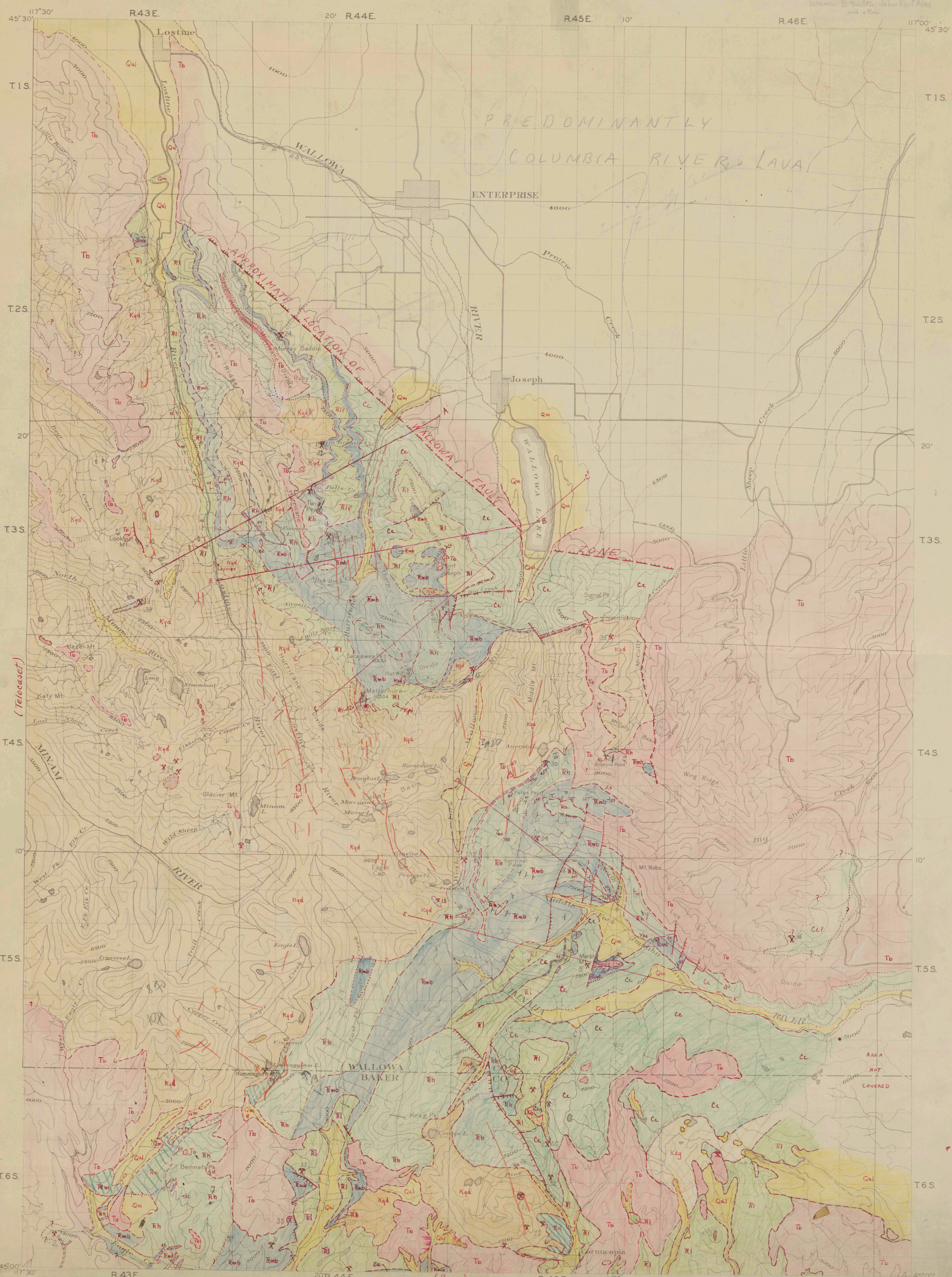
PLATE NO. 1

EXPLANATION

- Qal** **Qm**
Alluvium and glacial deposits
(usually recent, sometimes older)
- Tb**
Tertiary
(usually small flows and feeds
often may also include a few lacustrine
deposits)
- Kqd** **Kb**
Clastic drifts and
conglomerates
(usually made of
quartzite and
granite, sometimes
travertine)
- Kbg**
Dipole gabbro complex
- Rh** **Rm**
Mesozoic
(includes "Thames-Melrose, Altonville
rocks" and "Trask's" volcanic rocks
of Ross. Shales black and gray, often
micaceous and quartzitic, sandstones
often in places to harden, shales
quartzites and gneiss, fossiliferous)
- Rmb**
Middle Eocene
(includes limestone, mass of
of calcareous shale and some
conglomerate - fossiliferous)
- Rl** **eg**
Lower Eocene
(includes "Columbia" (?) and
some of Ross, south of Joseph. Shale,
sandstone, with some amount
of limestone and conglomerate, mostly
altered to soft, shaly, micaceous
sandstone, some fossiliferous. Shale
Eocene work altered to sandstone)
- Cc**
Upper Eocene
(includes "Columbia" (?) and
some of Ross, south of Joseph. Shale,
sandstone, with some amount
of limestone and conglomerate, mostly
altered to soft, shaly, micaceous
sandstone, some fossiliferous. Shale
Eocene work altered to sandstone)

Contact located
Contact inferred
Attitude dip to actual of horizontal
Fault located
Fault inferred or
approximate location

MINES AND PROSPECTS
(Numbers refer to alphabetical
list of mines and prospects
given in text.)



Printed after United States Forest Service
Forest Atlas, Wallowa and Malheur
Forest, Oregon, 1912-1917

Contour Interval 500 feet
ELEVATION IN MEAN SEA LEVEL
1911

TRUE NORTH
MAGNETIC NORTH
APPROXIMATE MEAN
DECLINATION 1937

- I Geology by Warren D. Smith,
John Eliot Allen, Ray C.
Trasker, Wayne Lowell
Lloyd L. Ruff
1938-1939
- II Geology by Clyde P. Ross, 1938
- III Geology by E. J. Hodge, 1938
- IV Geology inferred or incomplete.

(Baker)

TUBE NO. 20