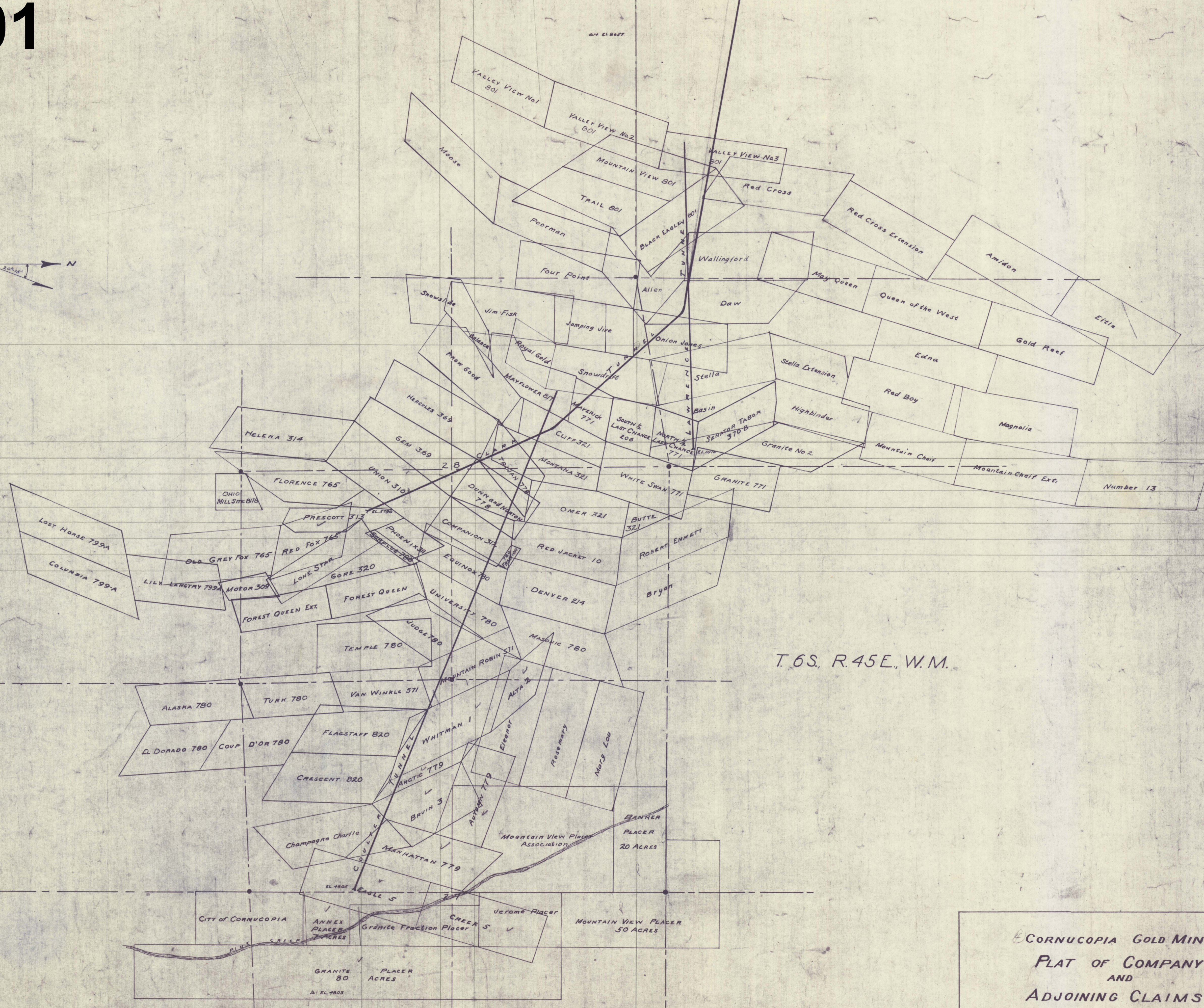
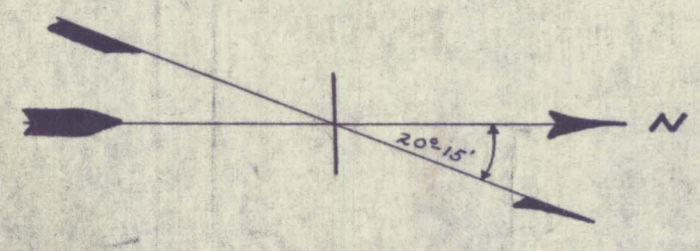


43337501



T.6S, R.45E, W.M.

PORTLAND No. 2
784
PORTLAND No. 1
784

CORNUCOPIA GOLD MINES
PLAT OF COMPANY
AND
ADJOINING CLAIMS
NOVEMBER 1941 SCALE: 1" = 600' EDWARDS ENGR.
NOTE:
All patented claims labeled with capital letters and
unpatented with lower case letters.
Where possible corners have been tied to triangulation control
Remaining claims located from patent plats and other
available records.

